

NO.	DESCRIPTION	QTY
1	FRAME 21RU 22 x 39.75 x 18	1
2	REAR SECTION (19 x 36.75) x 6	1
3	PLEXIGLAS DOOR 21RU (19 X 36.75)	1
4	MOUNTING RAIL (1.25") TAPPED 10-32	2
5	FRONT FEMALE HINGE	3
6	REAR MALE HINGE	3
7	4" FAN CUTOUT COVER PLATE	4
8	LINK ROTARY LATCH, MEDIUM	4
9	KEEPER	4
10	CLEVIS PIN 3/8 x 3/4	3
11	HAIRPIN COTTER PIN 1 1/4"	3

COLOUR	PT# SUFFIX
BLACK	-BK
WHITE	-WH
GREY	-GY

NOTES:

- 1 - CAPACITY: 150 LB
- 2 - APPROX. WEIGHT: 124 LB
- 3 - CABINET IS FULLY REVERSIBLE LH OR RH SWING.
- 4 - FINISH: TEXTURED POWDER COAT
- 5 - INCLUDES 24 TRUSS HEAD SCREWS 10-32 x 5/8 BLACK



PROPRIETARY AND CONFIDENTIAL
 THE INFORMATION CONTAINED IN THIS DRAWING IS THE SOLE PROPERTY OF ELECTRON METAL A.I.G. INC. ANY REPRODUCTION IN PART OR AS A WHOLE WITHOUT THE WRITTEN PERMISSION OF A.I.G. ELECTRON METAL INC IS PROHIBITED.

DRAWN BY:
T.M.

CHECKED BY:
T.M.

FILE:
Cabinet19x36x24_1305031356_Eng

PART NO.:
WMCRE1-192124

Title:
WALL MOUNT CABINET 21RU (19 x 36.75) x 24
22 x 39.75 x 24

APPROVED BY:
E.D.

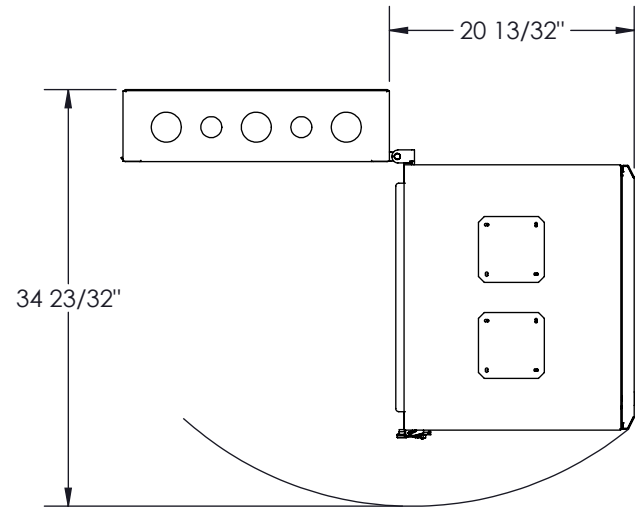
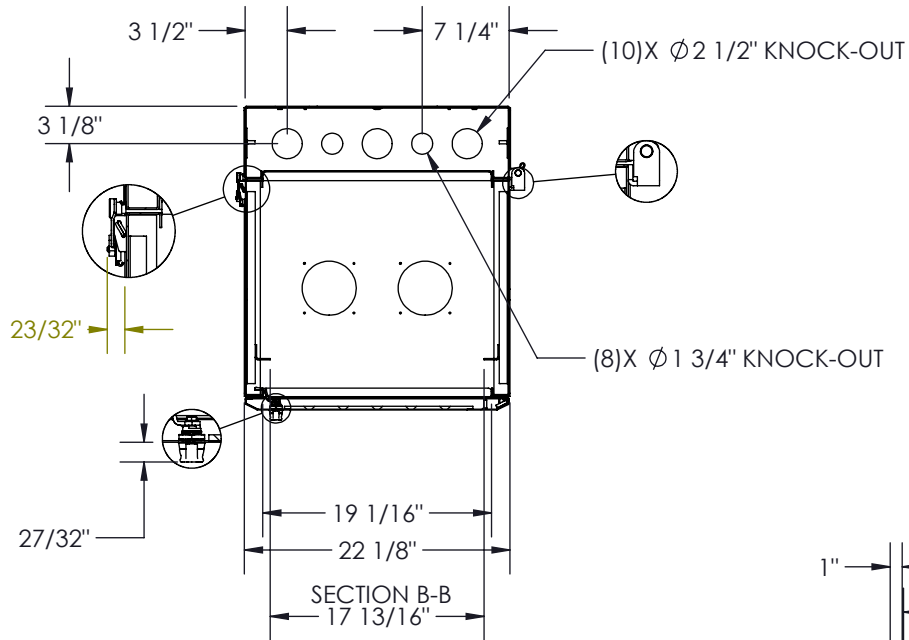
DRAWING NO.:
1305031356

REV.:
F

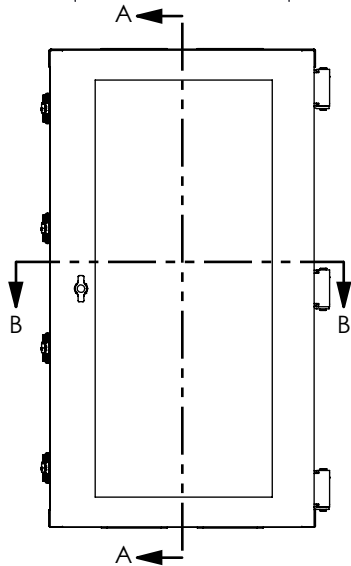
SCALE:
1:14

DATE:
2012-06-12

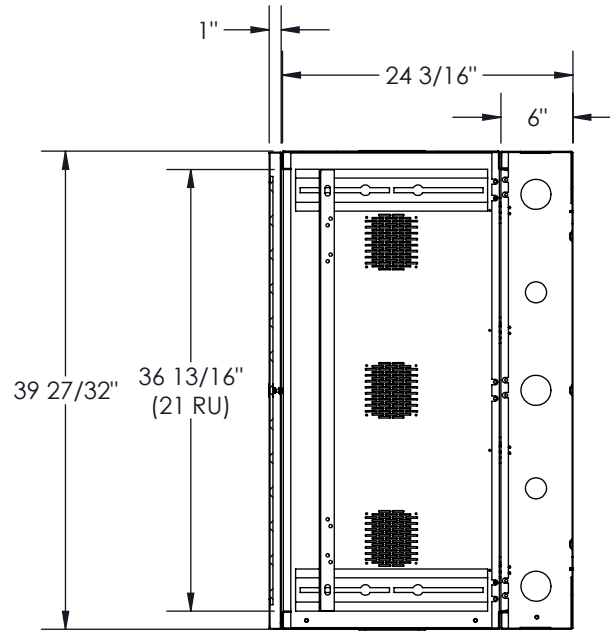
SHEET:
1 / 2



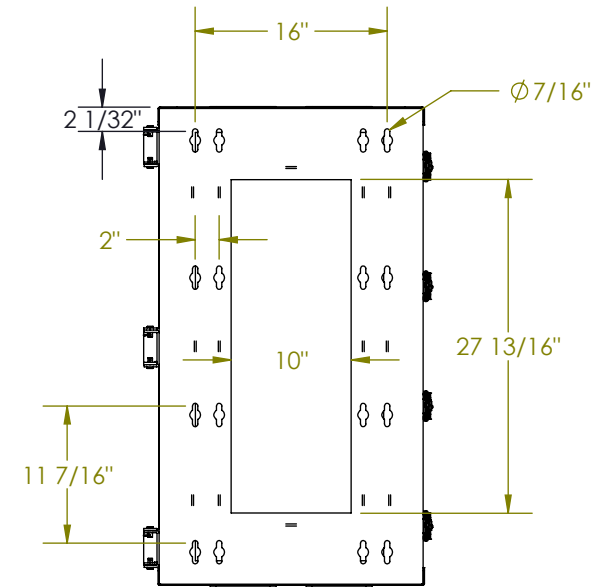
SWING CLEARANCE



FRONT VIEW



SECTION A-A



MOUNTING DETAIL

Electron METAL PROUDLY MANUFACTURED IN CANADA.

PROPRIETARY AND CONFIDENTIAL
THE INFORMATION CONTAINED IN THIS DRAWING IS THE SOLE PROPERTY OF ELECTRON METAL A.I.G. INC. ANY REPRODUCTION IN PART OR AS A WHOLE WITHOUT THE WRITTEN PERMISSION OF A.I.G. ELECTRON METAL INC IS PROHIBITED.

APPROVED BY:
E.D.

DRAWN BY:
T.M.

CHECKED BY:
T.M.

FILE:
Cabinet19x36x24_1305031356_Eng

PART NO.:
WMCRE1-192124

Title:
WALL MOUNT CABINET 21RU (19 x 36.75) x 24
22 x 39.75 x 24

DRAWING NO.:
1305031356

REV.:
F

SCALE:
1:16

DATE:
2012-06-12

SHEET:
2 / 2