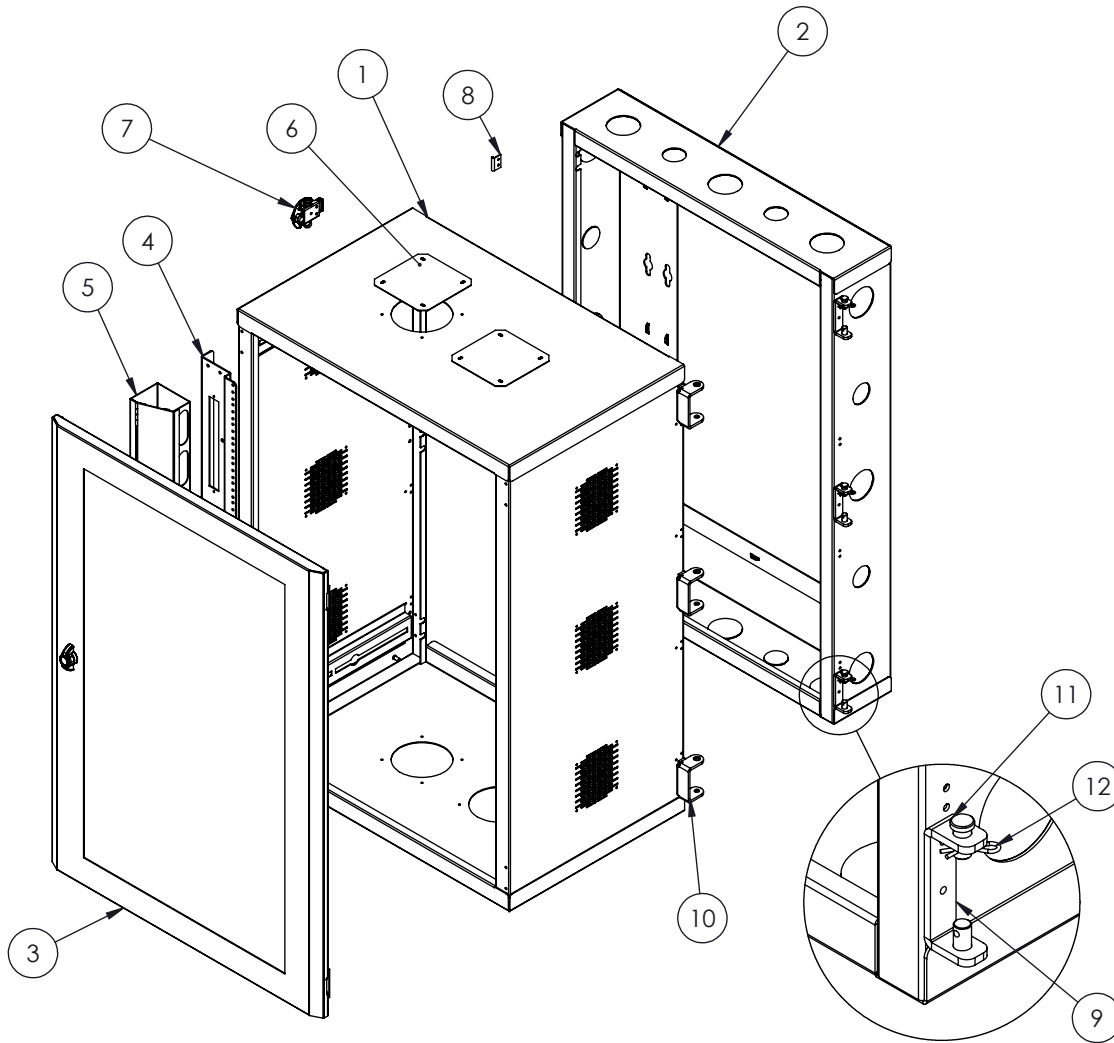


COLOUR	PT# SUFFIX
BLACK	-BK
WHITE	-WH
GREY	-GY



NO.	DESCRIPTION	QTY
1	FRAME 214U 28 x 39.75 x 18	1
2	REAR SECTION 21RU (25 x 36.75) x 6	1
3	PLEXIGLAS DOOR (25 x 36.75)	1
4	REINFORCED MOUNTING RAIL TAPPED 4.25" FOR BRUSH	2
5	VERTICAL CABLE MGT 3.5 x 3 x 36	2
6	4" FAN CUTOUT COVER PLATE	4
7	LINK ROTARY LATCH, MEDIUM	4
8	KEEPER	4
9	REAR MALE HINGE	3
10	FRONT FEMALE HINGE	3
11	CLEVIS PIN 3/8 x 3/4	3
12	HAIRPIN COTTER PIN 1 1/4"	3

NOTES:

1 - CAPACITY: 150 LB

2 - WEIGHT: 156 LB

3 - CABINET IS FULLY REVERSIBLE LH OR RH SWING.

4 - (4) FAN CUT-OUT COVER PLATES INSTALLED ON TOP / BOTTOM, (6) SHIP LOOSE.

5 - ALSO INCLUDES 24 TRUSS HEAD SCREWS 10-32 x 5/8 BLACK

6 - FINISH: TEXTURED POWDER COAT

Electron PROUDLY
METAL MANUFACTURED
IN CANADA.

PROPRIETARY AND CONFIDENTIAL
THE INFORMATION CONTAINED IN THIS
DRAWING IS THE SOLE PROPERTY OF
ELECTRON METAL A.I.G. INC. ANY
REPRODUCTION IN PART OR AS A WHOLE
WITHOUT THE WRITTEN PERMISSION OF
A.I.G. ELECTRON METAL INC IS PROHIBITED.

APPROVED BY:
E.D.

DRAWN BY:
S.B.
CHECKED BY:
S.B.

Title:
WALL MOUNT CABINET 21RU (25 x 36.75) x 24
28 x 39.75 x 24

FILE:
Cabinet25x36x24_1305033107_Eng

PART NO.:
WMCR1-252124

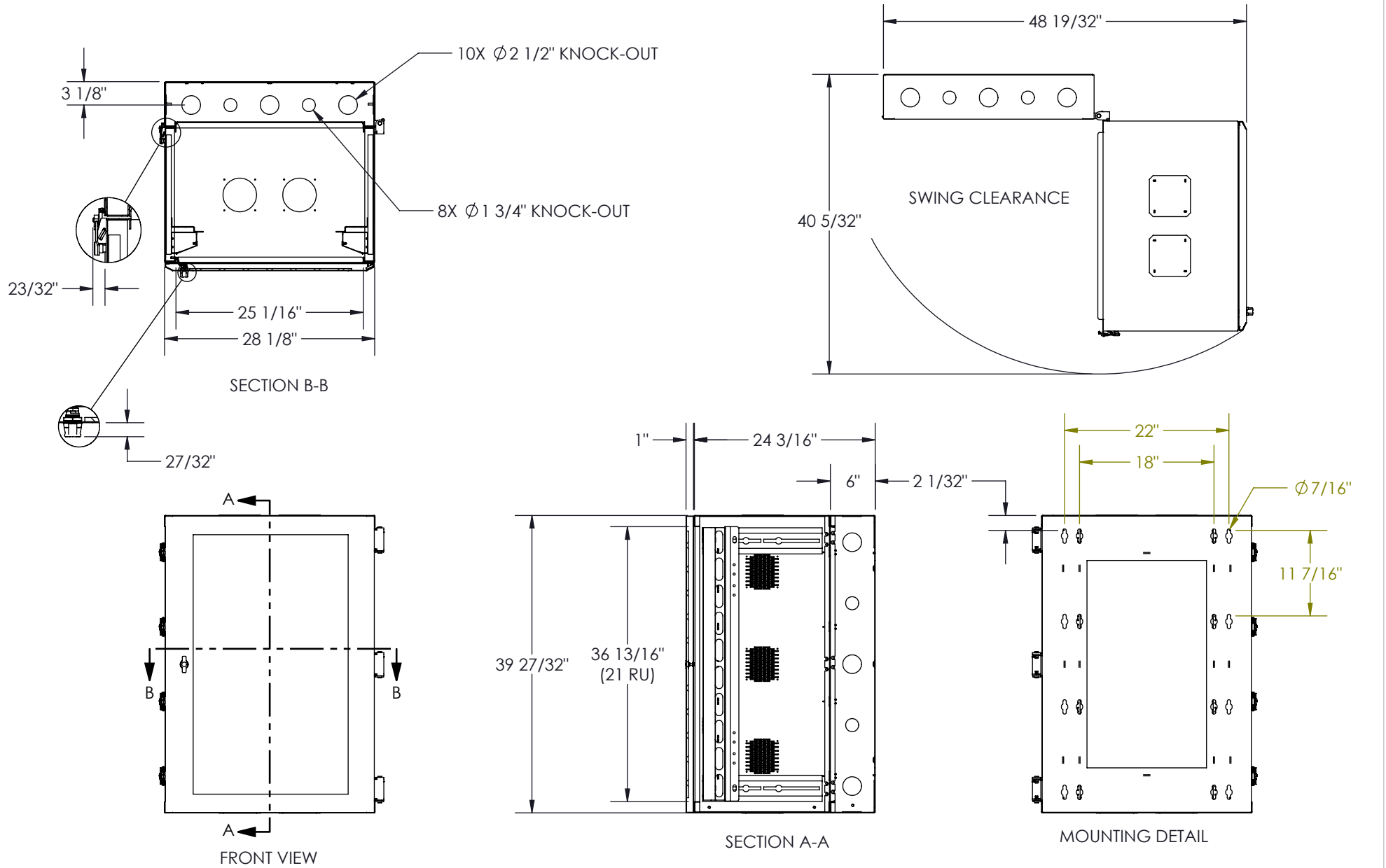
DRAWING NO.:
1305033107

REV.:
E

SCALE:
1:14

DATE:
2013-08-05

SHEET:
1 / 2



Electron METAL PROUDLY MANUFACTURED IN CANADA.

PROPRIETARY AND CONFIDENTIAL
 THE INFORMATION CONTAINED IN THIS DRAWING IS THE SOLE PROPERTY OF ELECTRON METAL A.I.G. INC. ANY REPRODUCTION IN PART OR AS A WHOLE WITHOUT THE WRITTEN PERMISSION OF A.I.G. ELECTRON METAL INC IS PROHIBITED.

APPROVED BY:
 E.D.

DRAWN BY:
 S.B.
 CHECKED BY:
 S.B.

Title:
 WALL MOUNT CABINET 21RU (25 x 36.75) x 24
 28 x 39.75 x 24

FILE:
 Cabinet25x36x24_1305033107_Eng

PART NO.:
 WMCR1-252124

DRAWING NO.:
 1305033107

REV.:
 E

SCALE:
 1:18

DATE:
 2013-08-05

SHEET:
 2 / 2