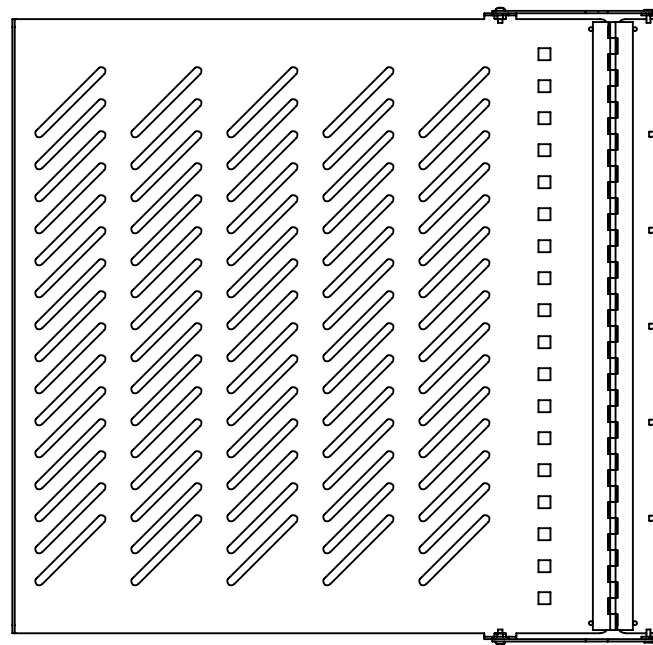
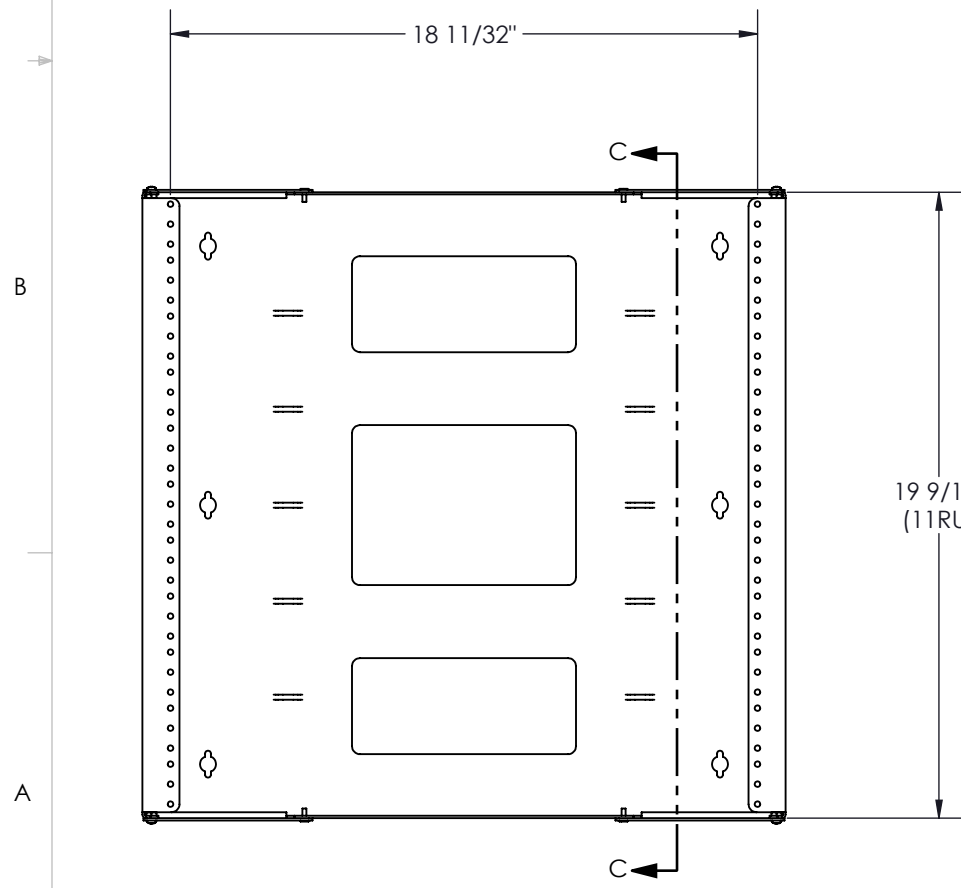
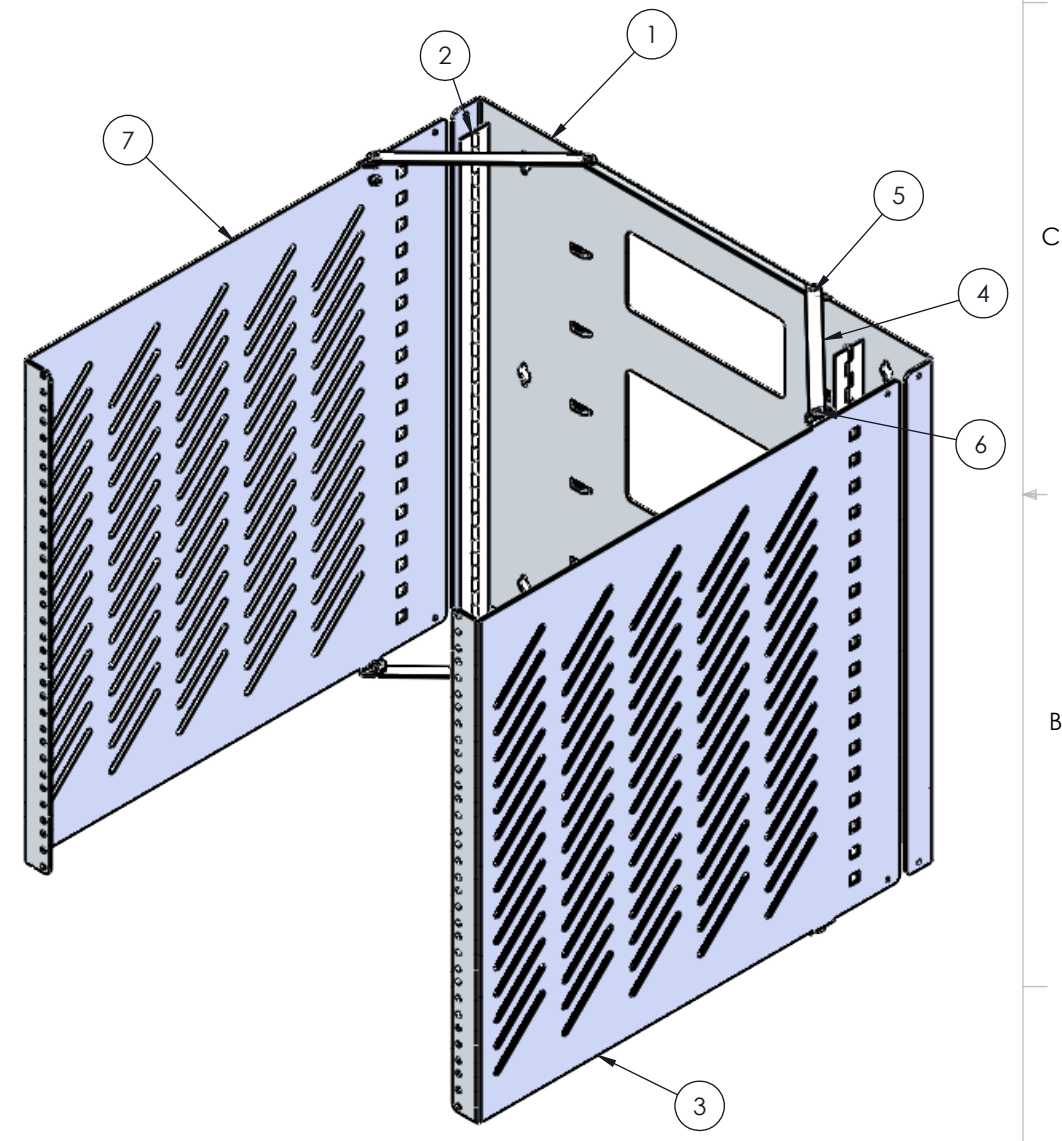


- NOTES:
- 1 - WEIGHT. APPROX: 22.50 LBS
  - 2 - FINISH : TEXTURED POWDER COATING
  - 3 - INCLUDES X(6) LARGE TRUSS HEAD SCREWS 10-32 x 5/8"
  - 4 - MATERIAL: STEEL CRS GAUGE 16 (0.060")

NO.	DWG/SUPPLIER	CFG/SUPPLIER NO.	DESCRIPTION	QTY
1	1305031439	SUPPORT (19 x 19.25) x 20	BACK	1
2		180 DEGREES	HINGE 19 x .093 x 1.25 x .040	2
3	1305031445	CÔTÉ (19.25) x 19	FIXED SIDE - RIGHT	1
4	1305031443	Default	LINK	4
5	FASTENAL	.125 x .375	POP RIVET 1/8 x 3/8	4
6		6-32 x .375	PAN HEAD SCREW QUADREX	4
7	1305031445	CÔTÉ (19.25) x 19	FIXED SIDE - RIGHT	1
8	FASTENAL	6-32	HEX NUT	4



SECTION C-C



**Electron METAL** PROUDLY MANUFACTURED IN CANADA

CONFIDENTIAL  
THE INFORMATION CONTAINED IN THIS DRAWING IS THE SOLE PROPERTY OF ELECTRON METAL A.I.G. INC. ANY REPRODUCTION IN PART OR AS A WHOLE WITHOUT THE WRITTEN PERMISSION OF A.I.G. ELECTRON METAL INC IS PROHIBITED.

DRAWN BY: R.B  
CHECKED BY: R.B

FILE: Support19x19.25x20\_1305031807\_Eng

PART NO.: WMBFOL-191120

TITLE: FOLDING WALL MOUNT BRACKET (19 x 19.25) x 20

DWG NO.: 1305031807  
REV: -  
SCALE: 1:6  
DATE: 2012-10-02  
SHEET: 1 / 1

G:\SWDwgs\WallMount\Brackets\Folding\ 1