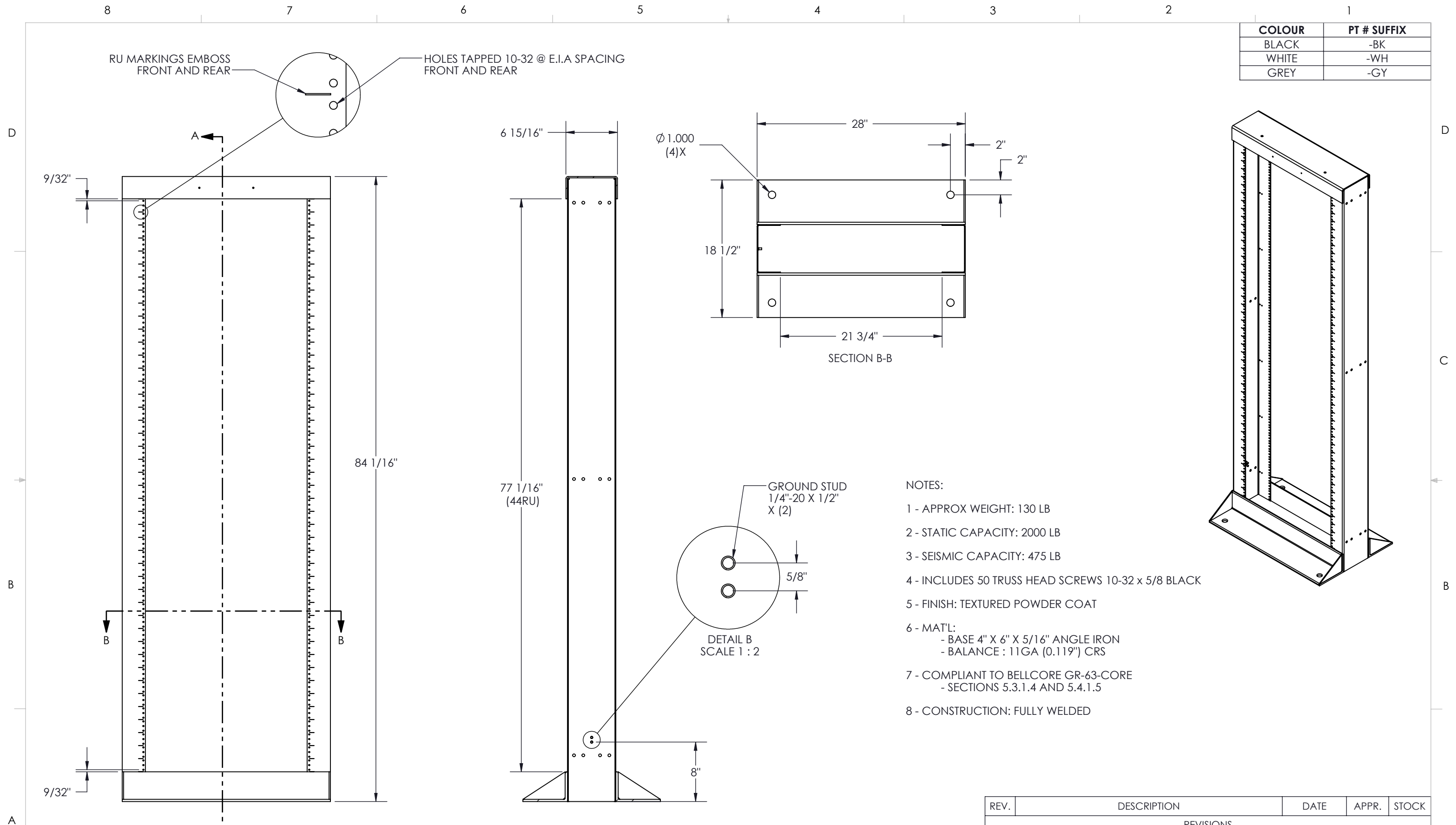
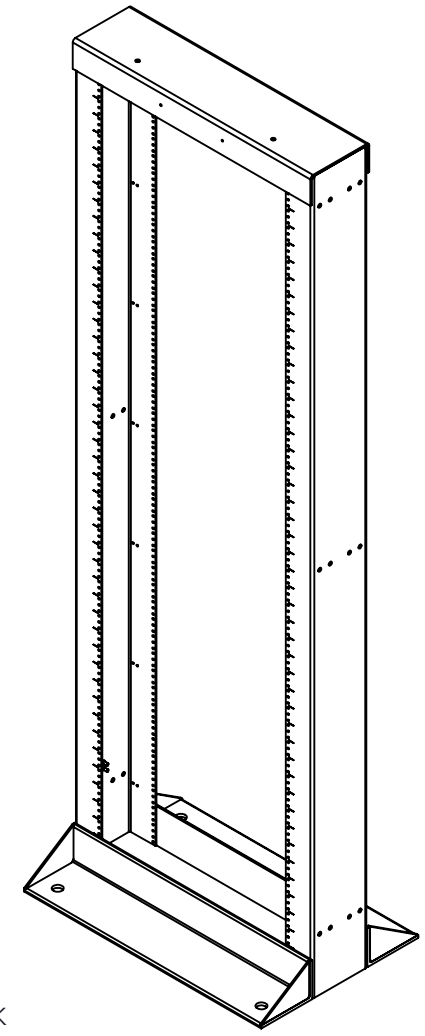


COLOUR	PT # SUFFIX
BLACK	-BK
WHITE	-WH
GREY	-GY



- NOTES:
- 1 - APPROX WEIGHT: 130 LB
 - 2 - STATIC CAPACITY: 2000 LB
 - 3 - SEISMIC CAPACITY: 475 LB
 - 4 - INCLUDES 50 TRUSS HEAD SCREWS 10-32 x 5/8 BLACK
 - 5 - FINISH: TEXTURED POWDER COAT
 - 6 - MAT'L:
 - BASE 4" X 6" X 5/16" ANGLE IRON
 - BALANCE : 11GA (0.119") CRS
 - 7 - COMPLIANT TO BELLCORE GR-63-CORE
 - SECTIONS 5.3.1.4 AND 5.4.1.5
 - 8 - CONSTRUCTION: FULLY WELDED



Electron METAL PROUDLY MANUFACTURED IN CANADA

CONFIDENTIAL
 THE INFORMATION CONTAINED IN THIS DRAWING IS THE SOLE PROPERTY OF ELECTRON METAL A.I.G. INC. ANY REPRODUCTION IN PART OR AS A WHOLE WITHOUT THE WRITTEN PERMISSION OF A.I.G. ELECTRON METAL INC IS PROHIBITED.

APPROVED BY:
T.M.

REV.	DESCRIPTION	DATE	APPR.	STOCK
REVISIONS				
DRAWN BY: E.D.		TITLE: ZONE 4 RACK 44RU (23 x 77)		
CHECKED BY: E.D.				
FILE: Assem23x77_1305024183_ENG				
PART NO.:	RKZFR2-234400	DWG NO.:	1305024183	REV.:
		SCALE:	1:12	DATE:
			2007-04-04	SHEET:
				1 / 1