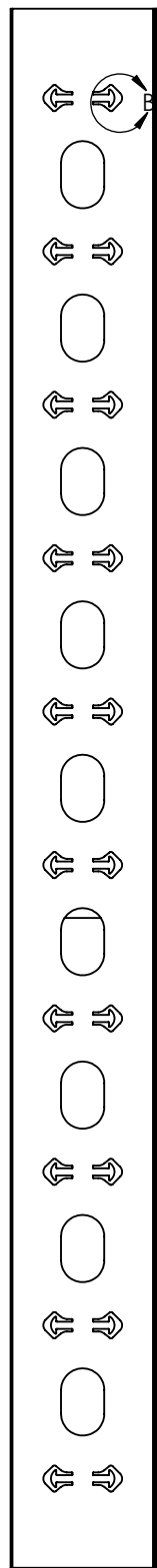
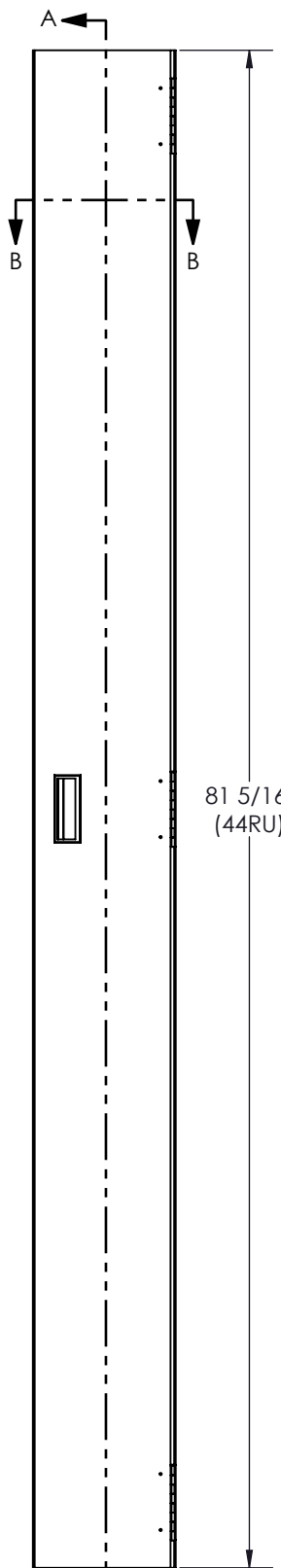


COLOR	PT# SUFFIX
BLACK	-BK
WHITE	-WH
GREY	-GY

D
B
A

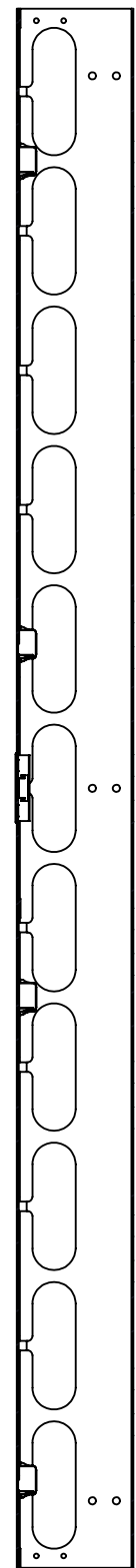


REAR VIEW

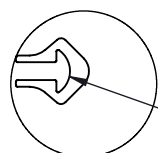


FRONT VIEW

81 5/16"
(44RU)



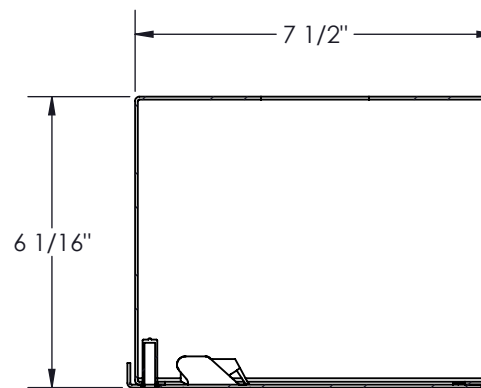
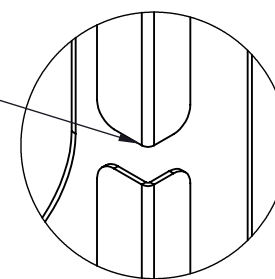
SECTION A-A



DETAIL B
SCALE 1 : 4

CABLE HOOKS

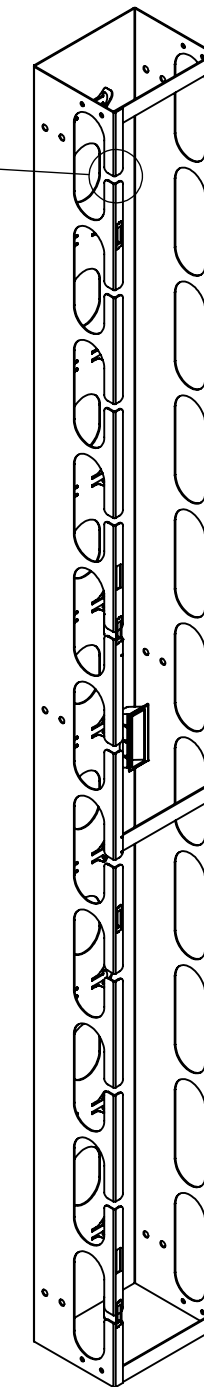
SLOTS FACILITATE
CABLE ROUTING



SECTION B-B
SCALE 1 : 4

NOTES:

- 1 - APPROX. WEIGHT: 32.7 LBS.
- 2 - FINISH: TEXTURE POWDER COAT
- 3 - SHIPS WITH (12) SETS OF BOLTS 1/4"-20 X 3/4"
- 4 - MAT'L: 16GA (0.60") CRS
- 5 - CONSTRUCTION: FULLY WELDED
- 6 - CABLE MANAGEMENT IS REVERSIBLE LH OR RH OPENING



DOOR NOT SHOWN

D
C
B

<p>Electron METAL PROUDLY MANUFACTURED IN CANADA</p>	DRAWN BY: E.D.	TITLE: VERTICAL CABLE MGT 7.5 x 6 x (77)
	CHECKED BY: E.D.	
PROJECT: G:\SWDwgs\CableMgt\CableMgt_Racks\VertCableMgt\	FILE: VertCableMgtAssy7x6x77_1305024660_Eng	
	PART NO.: CMRSTD-074406	DWG NO.: 1305024660

APPROVED BY:
E.D.