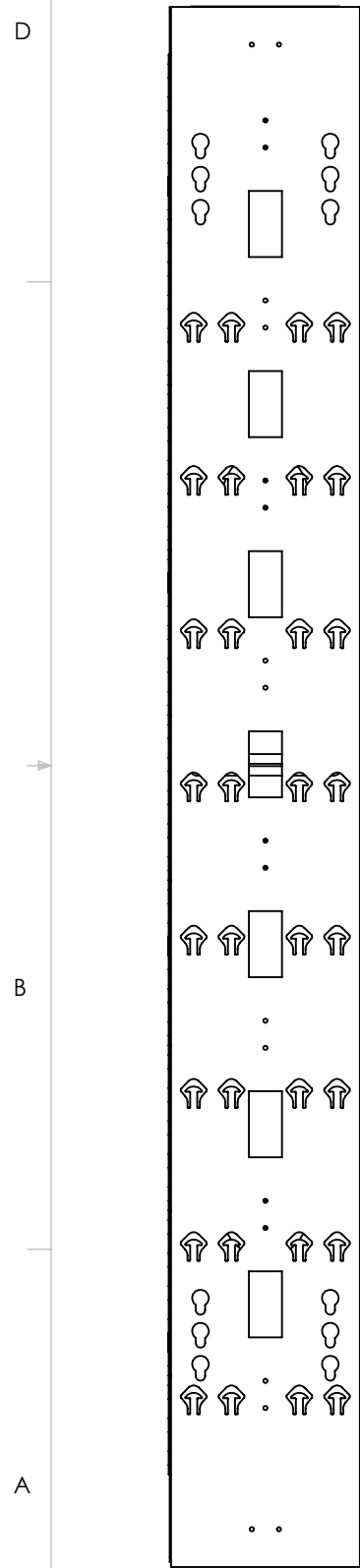
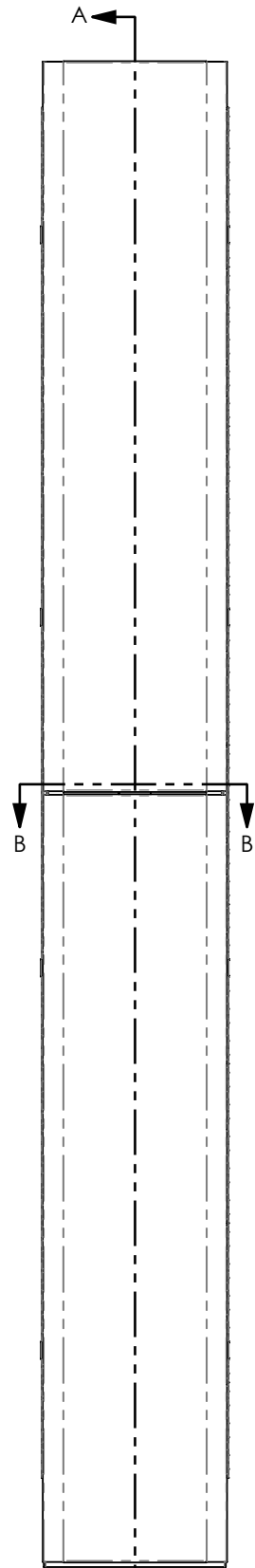


COLOR	PT# SUFFIX
BLACK	-BK
WHITE	-WH
GREY	-GY

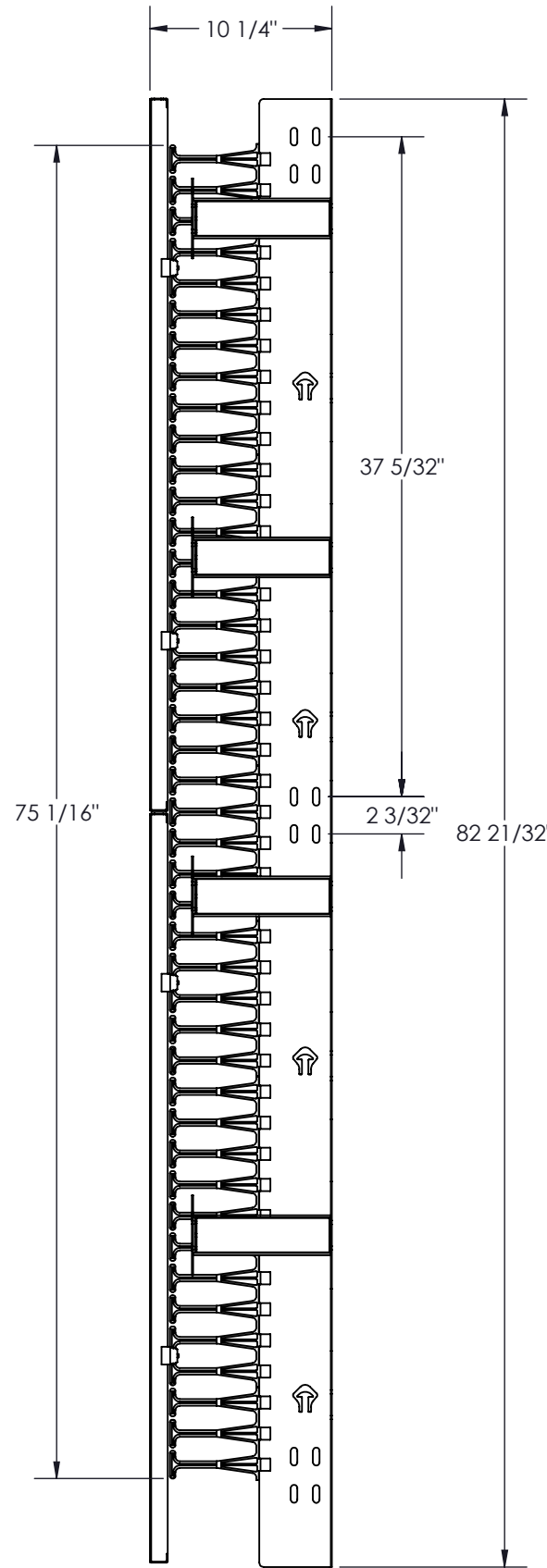
NO.	DWG/SUPPLIER	CFG/SUPPLIER NO.	DESCRIPTION	QTY
1	2580-002	10 x 9	BODY 44RU (77)	1
2	1305020805	7.75"	SPOOL BRACKET	4
3	1305020804	4.5"	SPOOL END PLATE	4
4	1305020806	7.75"	SPOOL	4
5	1305038739	3RU	PLASTIC CABLE MGT FINGERS	2
6	1305038739	5RU	PLASTIC CABLE MGT FINGERS	16
7	3282-020	Default	UPPER DOOR 10 x (77)	1
8	3282-022	Default	BOTTOM DOOR 10 x (77)	1



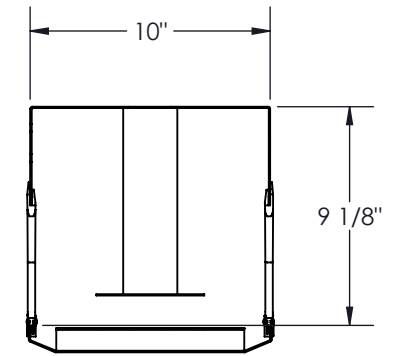
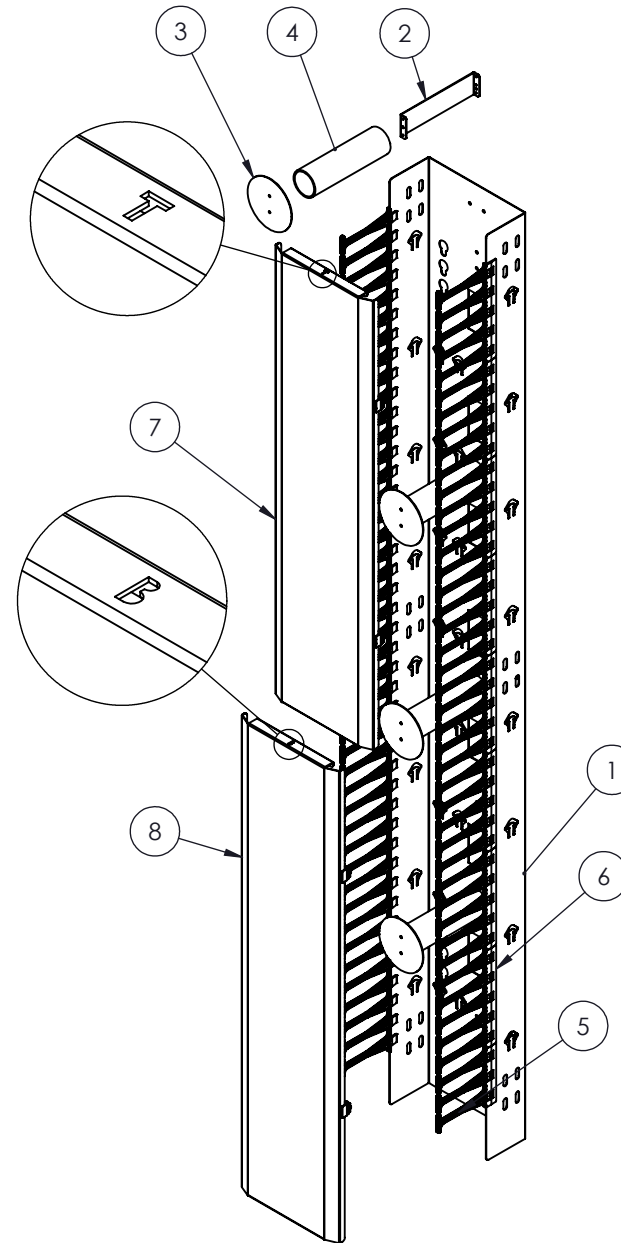
REAR VIEW



FRONT VIEW



SECTION A-A



SECTION B-B
SCALE 1 : 8

NOTES:

- 1 - APPROX. WEIGHT: 36.2 LB
- 2 - FINISH: TEXTURED POWDER COAT
- 3 - FINGERS MADE OF FIRE RETARDANT POLYCARBONT
- 4 - SHIPS WITH 12 SETS OF BOLTS 1/4-20 x 3/4"
- 5 - MATERIAL :
 - BODY: STEEL 16GA CRS (0.60")
 - DOOR: ALUMINUM 14 GA (.064")

Electron METAL PROUDLY MANUFACTURED IN CANADA
 CONFIDENTIAL
 THE INFORMATION CONTAINED IN THIS DRAWING IS THE SOLE PROPERTY OF ELECTRON METAL A.I.G. INC. ANY REPRODUCTION IN PART OR AS A WHOLE WITHOUT THE WRITTEN PERMISSION OF A.I.G. ELECTRON METAL INC IS PROHIBITED.

DRAWN BY: E.D.
 CHECKED BY: E.D.

TITLE: HIGH DENSITY CABLE MGT 10 x (77) x 9 WITH DOORS

FILE: GestHD10x77x9_3237-010_Eng

PART NO.: CMRHSD-104409

DWG NO.: 3237-010

REV.

SCALE: 1:10

DATE: 2022-01-07

SHEET: 1 / 1

APPROVED BY: T.M.