

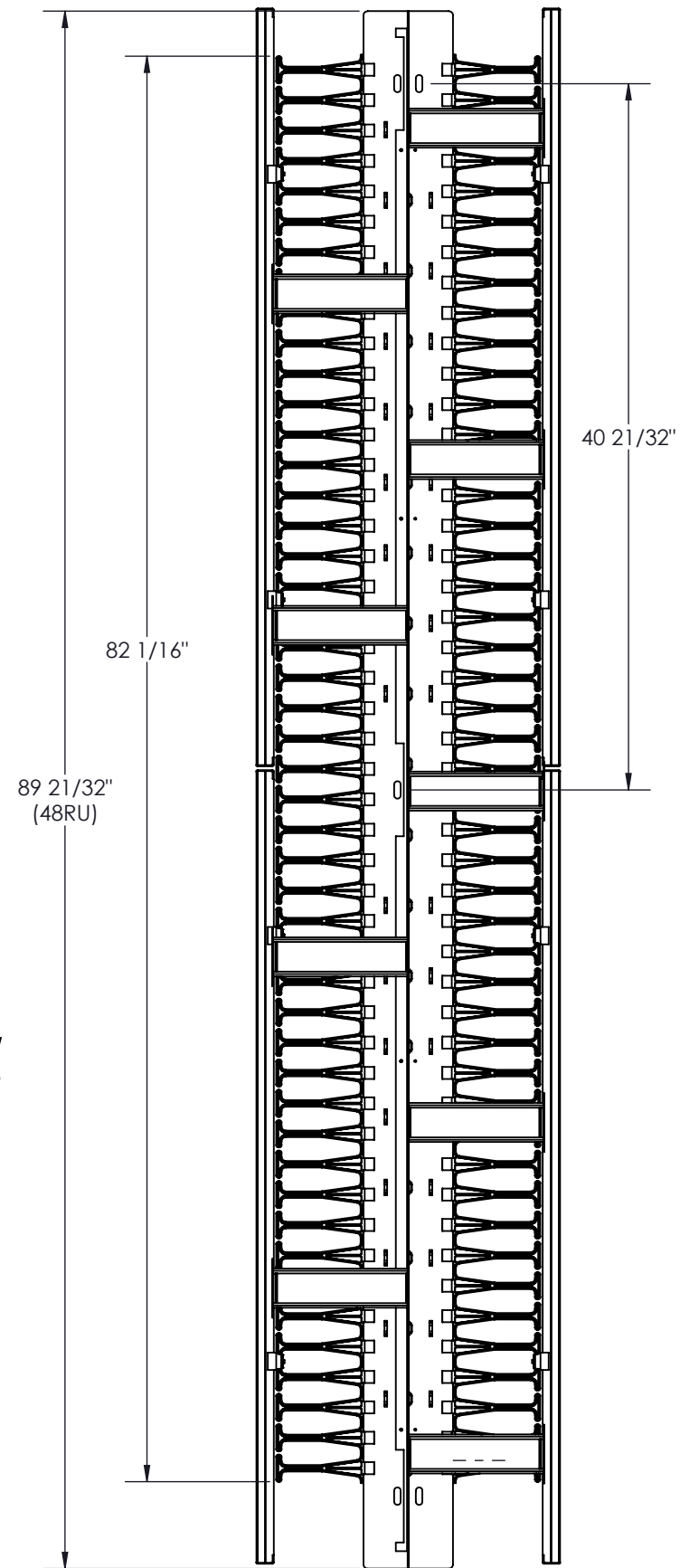
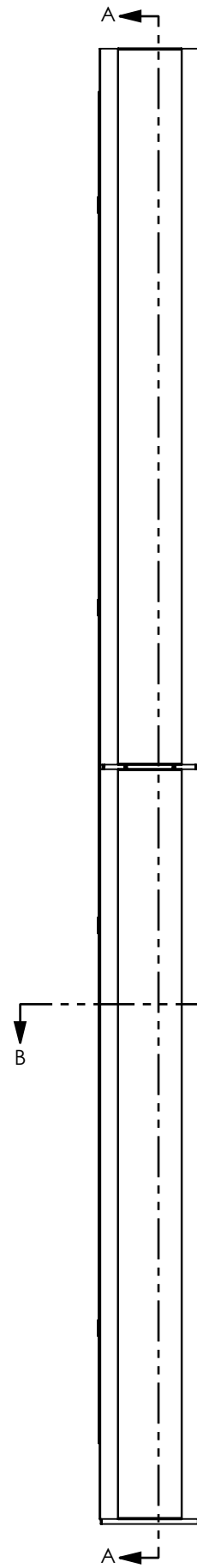
COLOR	PT# SUFFIX
BLACK	-BK
WHITE	-WH
GREY	-GY

NO.	DWG/SUPPLIER	CFG/SUPPLIER NO.	DESCRIPTION	QTY
1	3404-011	Default	FRAME DOUBLE 6 x (84) x 15	1
2	1305038739	5RU	PLASTIC CABLE MGT FINGERS	32
3	1305038739	3RU	PLASTIC CABLE MGT FINGERS	4
4	1305038739	4RU	PLASTIC CABLE MGT FINGERS	4
5	1305020805	7.75"	SPOOL BRACKET	9
6	1305020806	7.75"	SPOOL	9
7	1305020804	3.375"	SPOOL END PLATE	9
8	3282-034	Default	BOTTOM DOOR 6 x (84)	2
9	3282-033	Default	UPPER DOOR 6x (84)	2

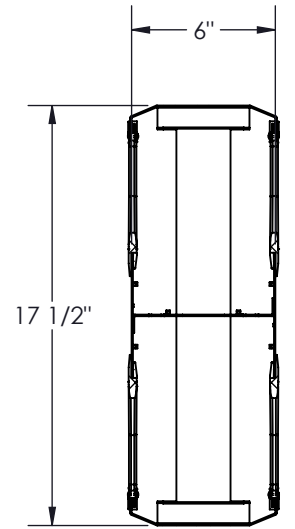
D

B

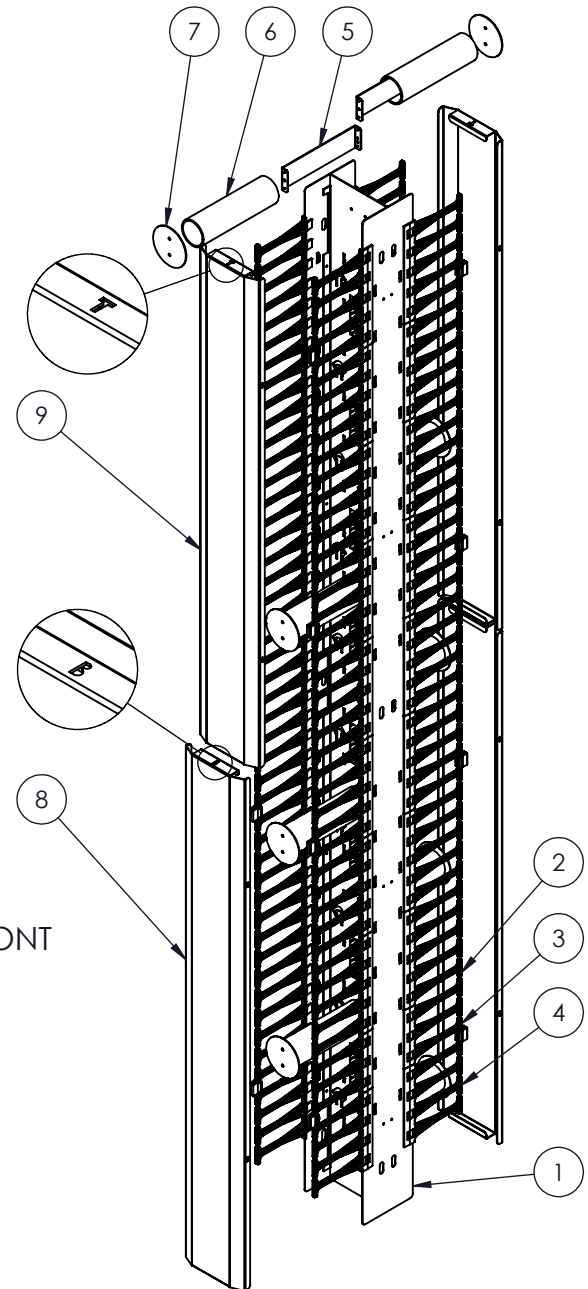
A



SECTION A-A



SECTION B-B
SCALE 1 : 8



NOTES:

- 1 - APPROX. WEIGHT: 47.30 LB
- 2 - FINISH: TEXTURED POWDER COAT
- 3 - FINGERS MADE OF FIRE RETARDANT POLYCARBONT
- 4 - SHIPS WITH 12 SETS OF BOLTS 1/4-20 x 3/4"
- 5 - MATERIAL :
 - BODY: STEEL 16GA CRS (0.60")
 - DOOR: ALUMINUM 14 GA (.064")

Electron METAL PROUDLY MANUFACTURED IN CANADA

CONFIDENTIAL
THE INFORMATION CONTAINED IN THIS DRAWING IS THE SOLE PROPERTY OF ELECTRON METAL A.I.G. INC. ANY REPRODUCTION IN PART OR AS A WHOLE WITHOUT THE WRITTEN PERMISSION OF A.I.G. ELECTRON METAL INC IS PROHIBITED.

DRAWN BY: T.M.	TITLE: DOUBLE HD CABLE MGT 48RU 6 x (84) x 15- 2 WAY DOOR	
CHECKED BY: T.M.	FILE: GestionCables6x84x15AvecPortes_3373-007_Eng	
PART NO.: CMRH2D-064815	DWG NO.: 3373-007	REV. SCALE: DATE: SHEET: 1:10 2023-03-23 1 / 1

8

7

6

5

4

3 2 1

1