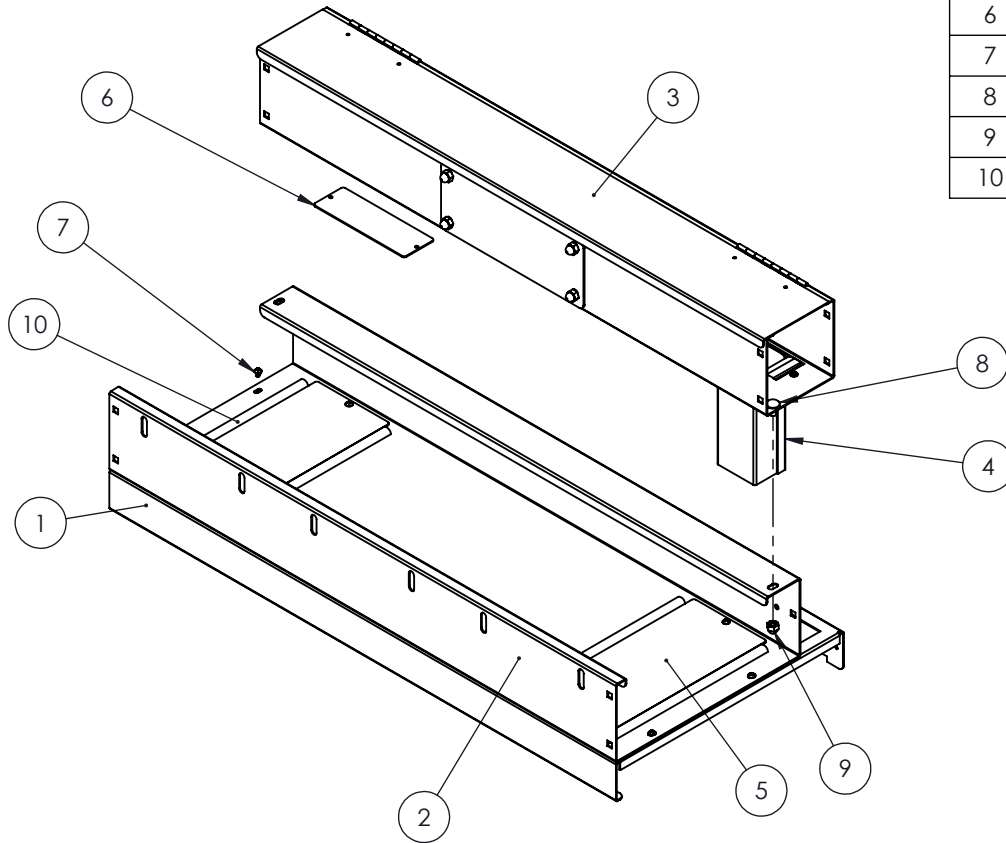



NO.	NOTE	DESCRIPTION	QTY
1	1305038586 - 30"	SUPPORT	1
2	1305038591 - 30"	COPPER CABLE TRAY	1
3	1305039302	FIBER CABLE CONDUIT 30 x 4 x 4	1
4	1305039263	FIBER DROP 2 x 6 x 2	1
5	2188-001 - 10.25"	COVER	2
6	2190-002	COVER	1
7	8 - 32 x 1/4	THREAD-ROLLING SCREWS	14
8	1/4-20 x 1/2	CARRIAGE BOLT	2
9	1/4-20	ACORN NUT	2
10	SPAENAU_825-227 - 9.313"	EXTRUDED NEOPRENE CHANNEL	4

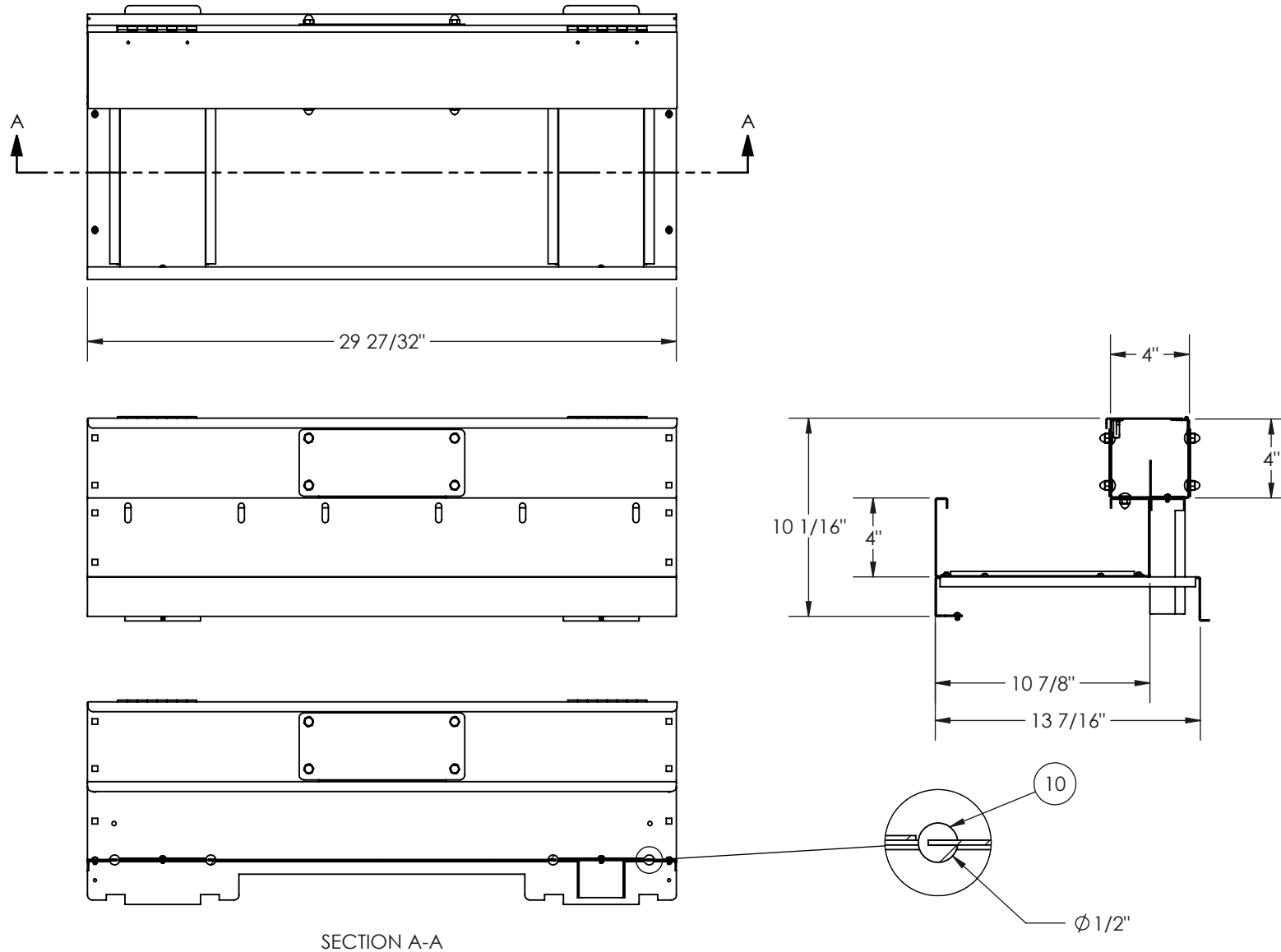


NOTES:

- 1 - APPROX. WEIGHT: 26 LB.
- 2 - FITS 30" WIDE SEREIS 4000 CABINET
- 3 - MAT'L: 16 GA. (.060") CRS
- 4 - FINISH: POLYESTER POWDER COAT, FIBRE CONDUIT IS YELLOW U.O.S.

RÉV.	DESCRIPTION	DATE	APPR.	INV.
RÉVISIONS				

 <p><b>PROUDLY MANUFACTURED IN CANADA.</b></p> <p><b>PROPRIETARY AND CONFIDENTIAL</b> THE INFORMATION CONTAINED IN THIS DRAWING IS THE SOLE PROPERTY OF A.I.G. ELECTRON METAL INC. ANY REPRODUCTION IN PART OR AS A WHOLE WITHOUT THE WRITTEN PERMISSION OF A.I.G. ELECTRON METAL INC IS PROHIBITED.</p>	DRAWN BY: <b>E.D.</b>	Title: <b>OVERHEAD MGT 30", COPPER, FIBRE &amp; 1 DROP</b>		
	CHECKED BY: <b>E.D.</b>			
PROJECT: G:\SWDwgs\Cabinets\Ser4000\GestionCablesSuperieur\CuivreFibreChutes\	PART NO.: <b>CMCOC1-270411</b>		DRAWING NO.: <b>2211-001</b>	FILE: GestionSuperieur30CuivreFibre1Chute_2211-001_Eng
		REV.: -	SCALE: <b>1:8</b>	DATE: <b>2018-02-12</b>
				SHEET: <b>1 / 2</b>



**electron** PROUDLY  
METAL MANUFACTURED  
IN CANADA.

**PROPRIETARY AND CONFIDENTIAL**  
THE INFORMATION CONTAINED IN THIS  
DRAWING IS THE SOLE PROPERTY OF  
A.I.G. ELECTRON METAL INC. ANY  
REPRODUCTION IN PART OR AS A WHOLE  
WITHOUT THE WRITTEN PERMISSION OF  
A.I.G. ELECTRON METAL INC IS PROHIBITED.

DRAWN BY:  
E.D.

CHECKED BY:  
E.D.

PROJECT:  
G:\SWDwgs\Cabinets\Ser4000\GestionCablesSuperieur\CuivreFibreChutes\

PART NO.:  
CMCOC1-270411

Title:

OVERHEAD MGT 30", COPPER, FIBRE & 1 DROP

FILE:  
GestionSuperieur30CuivreFibre1Chute\_2211-001\_Eng

DRAWING NO.:  
2211-001

REV.:  
-

SCALE:  
1:8

DATE:  
2018-02-12

SHEET:  
2 / 2