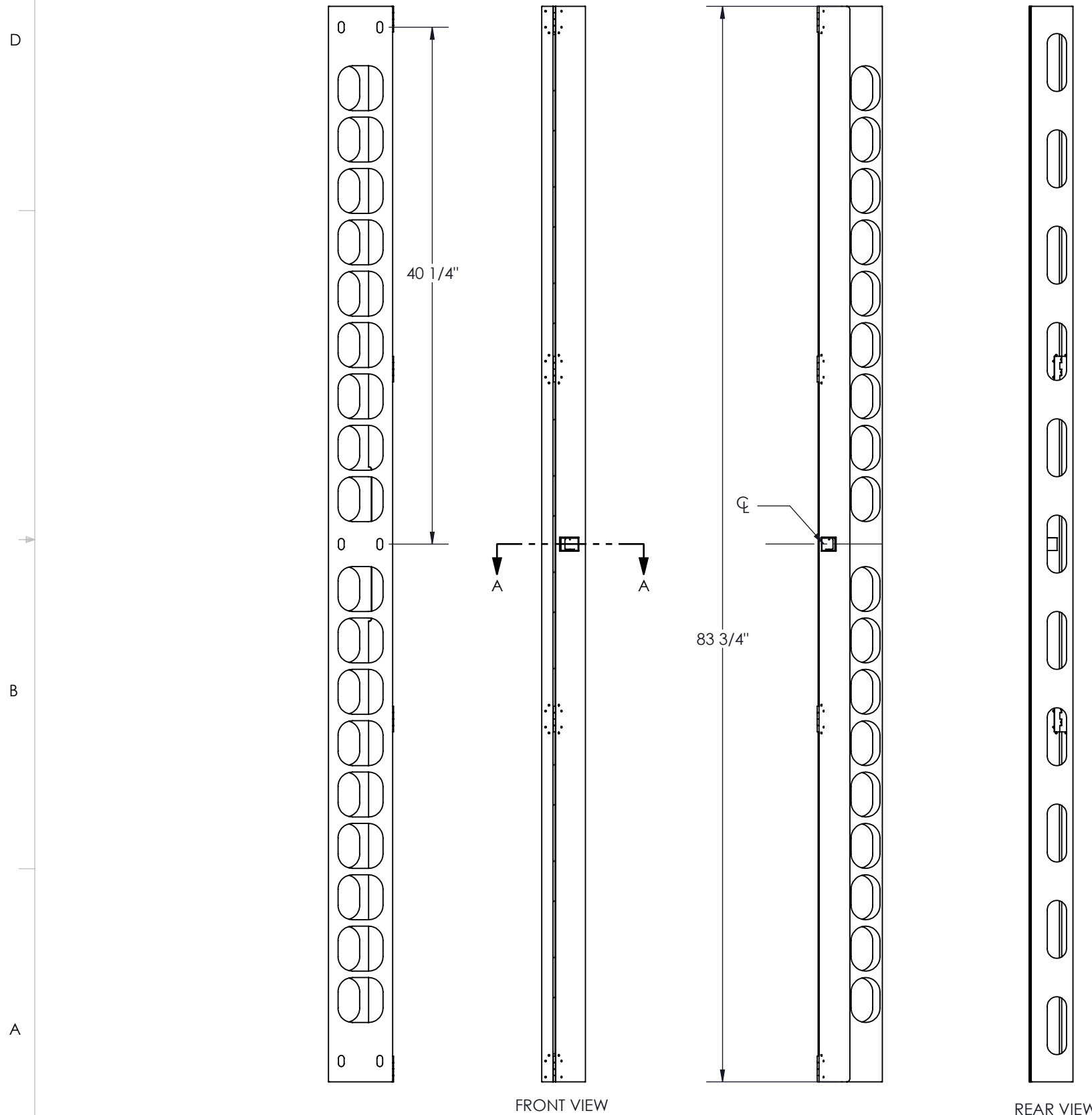


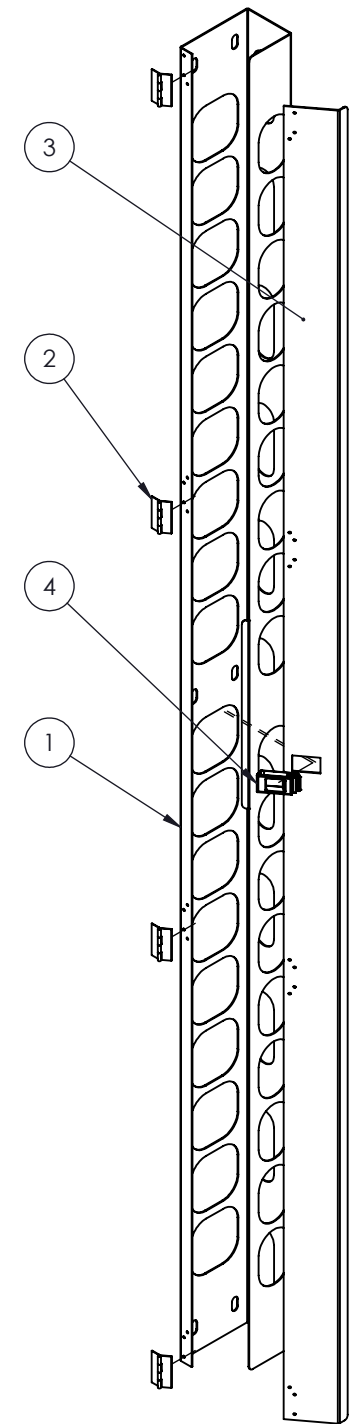
COLOR	PT# SUFFIX
BLACK	-BK
WHITE	-WH
GREY	-GY

NO.	DWG/SUPPLIER	CFG/SUPPLIER NO.	DESCRIPTION	QTY
1	1305021150	Default	BODY CONDUIT 3.25 x (84) x 5	1
2	T.C.H.	505-9042802 - 217 DEGRÉS	BUTT HINGE 2" x 1.25" OPEN, .093 DIA. PIN	4
3	1305021151	(84")	BEVELED DOOR FOR CONDUIT	1
4	SOUTHCO	A3-40-625-12	FLUSH SLIDE LATCH	1



NOTES:

- 1 - APPROX. WEIGHT: 15.45 LBS
- 2 - FINISH: TEXTURED POWDER COATING
- 3 - MATERIAL: STEEL CRS GAUGE 16 (0.060")
- 4 - CONSTRUCT: FULLY WELDED
- 5 - INCLUDES: ASSEMBLY HARDWARE



<p><b>Electron METAL</b> PROUDLY MANUFACTURED IN CANADA</p> <p><b>CONFIDENTIAL</b> THE INFORMATION CONTAINED IN THIS DRAWING IS THE SOLE PROPERTY OF ELECTRON METAL A.I.G. INC. ANY REPRODUCTION IN PART OR AS A WHOLE WITHOUT THE WRITTEN PERMISSION OF A.I.G. ELECTRON METAL INC IS PROHIBITED.</p>	DRAWN BY: E.D.	TITLE: VERTICAL CABLE MGT 3.25 x (84) x 5				
	CHECKED BY: R.B.	FILE: Conduit3p25x84x5_1305021152_Eng				
APPROVED BY:	PART NO.: CMCBEV-034805	DWG NO.: 1305021152	REV.: C	SCALE: 1:10	DATE: NOV. 10, 04	SHEET: 1 / 1