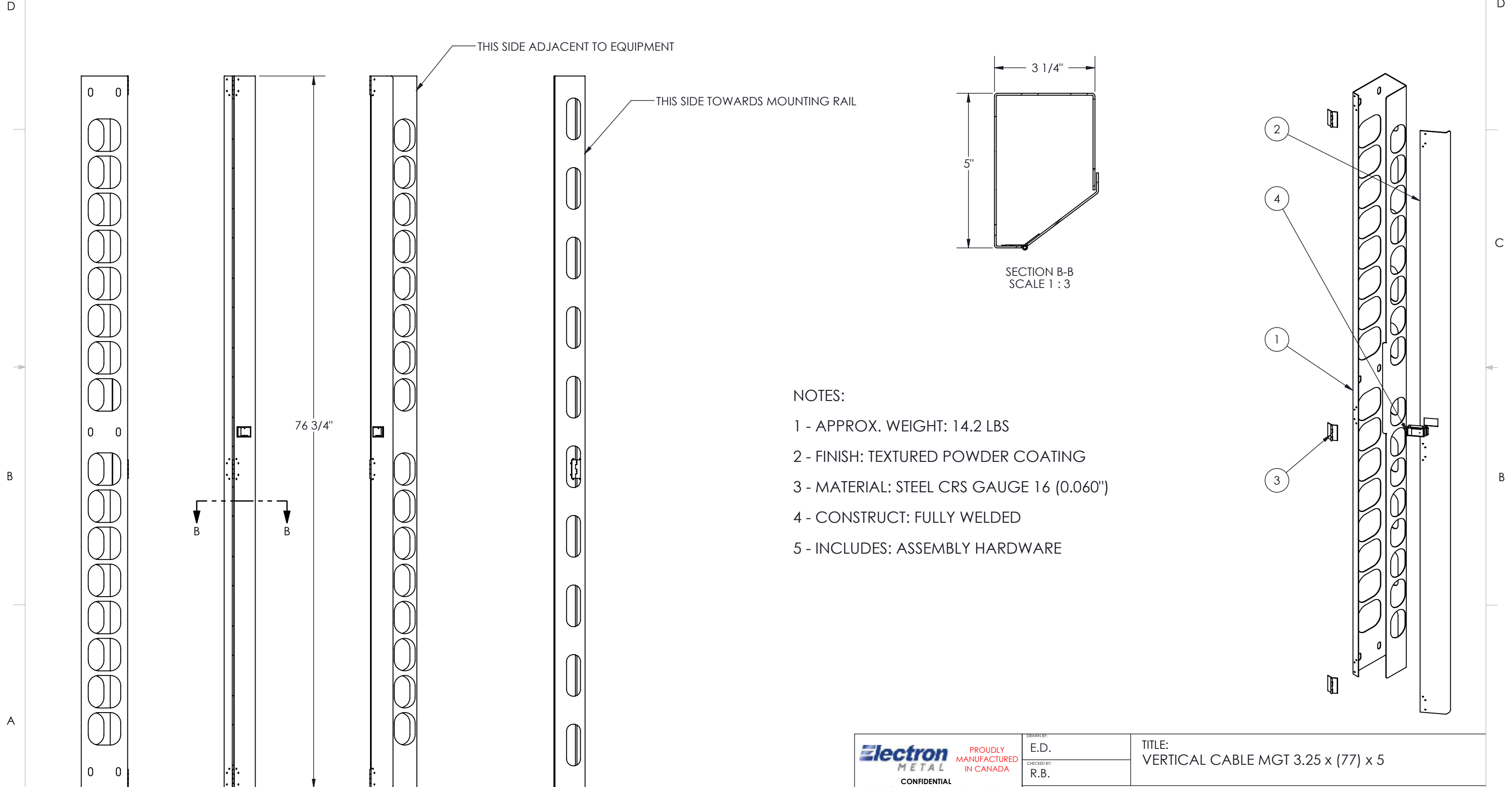


COLOR	PT# SUFFIX
BLACK	-BK
WHITE	-WH
GREY	-GY

NO.	DWG/SUPPLIER	CFG/SUPPLIER NO.	DESCRIPTION	QTY
1	127501	3.25 x 5	BODY (77"), BEVELED CONDUIT	1
2	1305021151	(77")	BEVELED DOOR FOR CONDUIT	1
3	T.C.H.	505-9042802 - 217 DEGRÉS	BUTT HINGE 2" x 1.25" OPEN, .093 DIA. PIN	3
4	SOUTHCO	A3-40-625-12	FLUSH SLIDE LATCH	1



NOTES:

- 1 - APPROX. WEIGHT: 14.2 LBS
- 2 - FINISH: TEXTURED POWDER COATING
- 3 - MATERIAL: STEEL CRS GAUGE 16 (0.060")
- 4 - CONSTRUCT: FULLY WELDED
- 5 - INCLUDES: ASSEMBLY HARDWARE

<p>Electron METAL PROUDLY MANUFACTURED IN CANADA</p> <p>CONFIDENTIAL THE INFORMATION CONTAINED IN THIS DRAWING IS THE SOLE PROPERTY OF ELECTRON METAL A.I.G. INC. ANY REPRODUCTION IN PART OR AS A WHOLE WITHOUT THE WRITTEN PERMISSION OF A.I.G. ELECTRON METAL INC IS PROHIBITED.</p>	DRAWN BY: E.D.	TITLE: VERTICAL CABLE MGT 3.25 x (77) x 5
	CHECKED BY: R.B.	
FILE: Conduit3p25x77x5_1305021980_Eng		
PART NO.: CMCBEV-034405	DWG NO.: 1305021980	REV.: B
APPROVED BY:	SCALE: 1:10	DATE: 2006-03-10
G:\SWDwgs\CableMgt\CableMgt_Cabinets\VCM_Sloped\		SHEET: 1 / 1