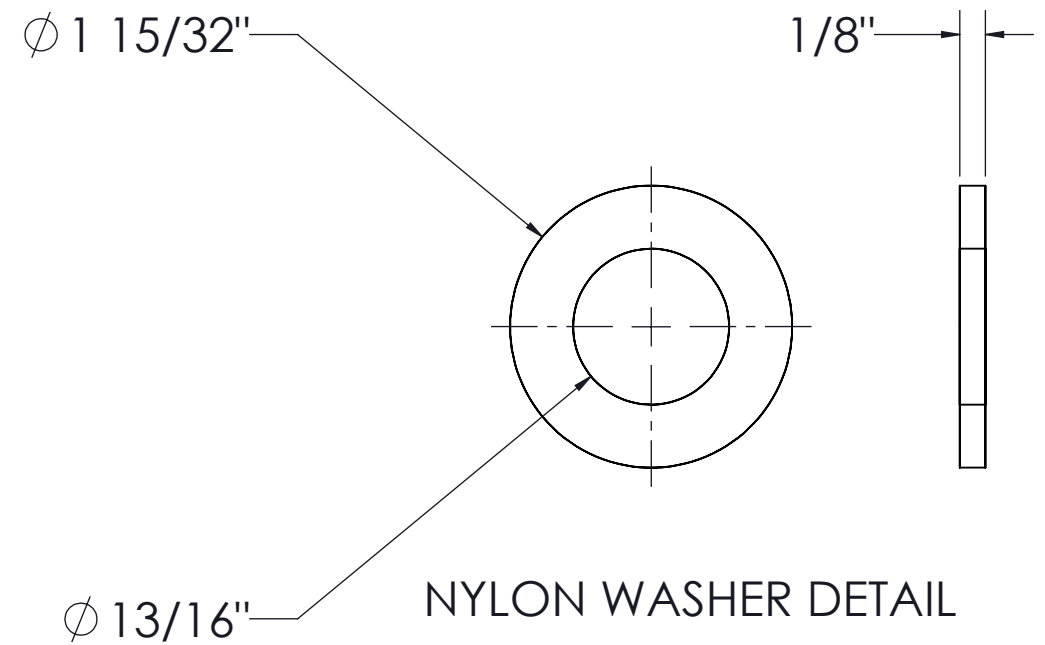
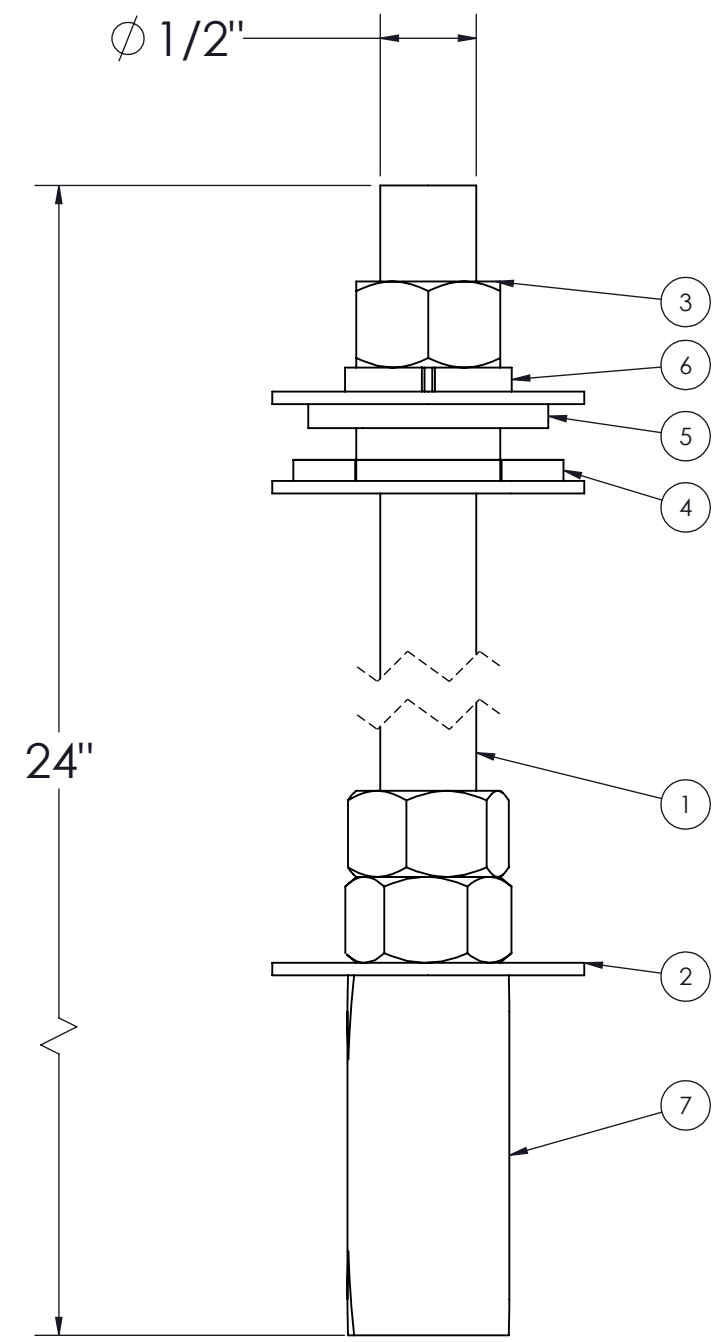


NO.	DWG/SUPPLIER	CFG/SUPPLIER NO.	DESCRIPTION	QTY
1	FASTENAL	.500-13 x 24 GRADE 5	THREADED ROD	1
2	ATTACHES RICHARD	0.500	WASHER, EXTRA WIDE (FENDER)	3
3	FASTENAL	*.500-13	HEX. NUT 1/2-13	3
4	FASTENAL	0.750"	NYLON WASHER	1
5	1540	Default	NYLON BUSHING	1
6	TECHNI-VIS	.500	SPLIT LOCK WASHER 1/2"	1
7	KC INDUSTRIEL	.5 BOLT .875 HOLE	EXPANSION SHIELD HD	1



NOTES:

1 - EACH KIT INCLUDES 4 ASSEMBLIES AS SHOWN ON THIS DRAWING

<p>Electron METAL PROUDLY MANUFACTURED IN CANADA</p> <p>CONFIDENTIAL THE INFORMATION CONTAINED IN THIS DRAWING IS THE SOLE PROPERTY OF ELECTRON METAL A.I.G. INC. ANY REPRODUCTION IN PART OR AS A WHOLE WITHOUT THE WRITTEN PERMISSION OF A.I.G. ELECTRON METAL INC IS PROHIBITED.</p>	DRAWN BY: E.D.	TITLE: ISOLATED ANCHORING KIT HD RAISED FLOOR				
	CHECKED BY: E.D.	PROJECT: G:\SWDwgs\Bell\Accessories\FeeTCastersAnchors\		FILE: IsolationKitRaised_Z4_1305028656_Eng		
APPROVED BY:	PART NO.: ANZCRR-081348	DWG NO.: 1305028656	REV: A	SCALE: 1:1	DATE: 2010-10-22	SHEET: 1 / 1