

POWER-FLEX™ 3 STRUCTURES®

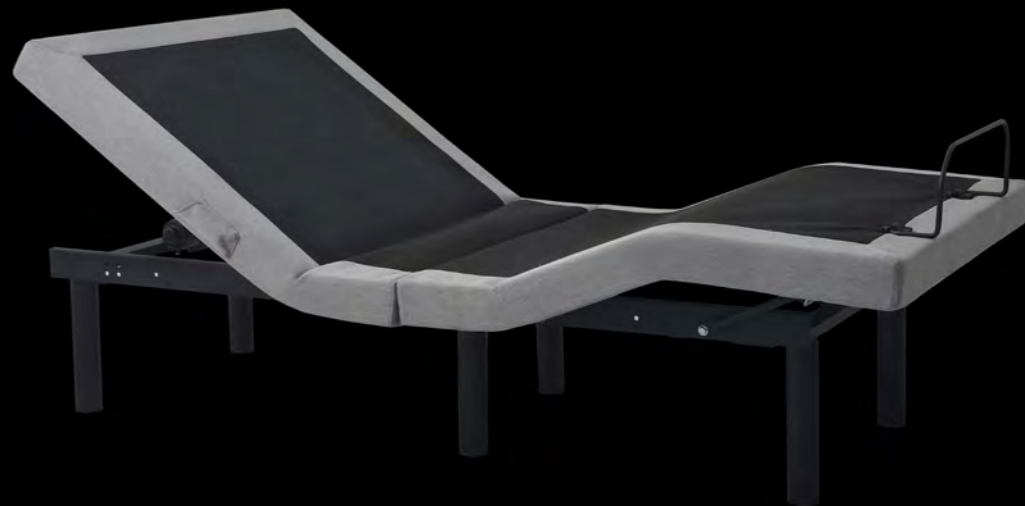


This STRUCTURES™ product is backed by a 20-year limited warranty.
For more information, visit:

www.maloufsleep.com

WWW.MALOUPSLEEP.COM • CUSTOMERSERVICE@MALOUPSLEEP.COM • 800.517.71

POWER-FLEX™ 3 OWNER'S MANUAL ADJUSTABLE BASE



WARNINGS



IMPORTANT: PLEASE READ ALL SAFETY INSTRUCTIONS THOROUGHLY BEFORE USING THIS PRODUCT. SAVE THESE INSTRUCTIONS.

BEFORE USE

- Carefully remove packaging. Take care not to damage the bed frame or any included parts.
- Carefully read and follow the set up and installation instructions included with the product.

ELECTRICAL

- This product is for use on a standard 120-volt circuit.
- Always use a grounded, electrical surge protection device with this product. This product should be plugged directly into the surge protection device and the surge protection device should be plugged directly into a wall outlet.
- Only connect this product to a properly grounded outlet.
- Always unplug this bed from the electrical outlet before cleaning or servicing.
- Never operate with a damaged cord or plug. Keep the cord away from this product's moving parts.
- Keep the cord away from heated surfaces.
- Do not use this product outdoors.

SMALL CHILDREN AND PETS

- Immediately dispose of all packing materials that may pose a suffocation risk.
- Do not allow children or pets to play on or under the bed. Children should not operate this product without adult supervision.

PACEMAKERS

- Some pacemakers may detect motion by this product as a false sense of movement or exercise. This may or may not affect your pacemaker. Talk to a physician to address any concerns.

HOME USE / HOSPITAL DISCLAIMER

- This product is designed solely for in-home use and not as a hospital bed. The product has not been tested to meet hospital standards. Do not use with oxygen or other flammable gasses.

WEIGHT RESTRICTIONS

- The recommended weight restrictions for the Power-Flex 3 Adjustable Base are as follows:
(all weights include the weight of the mattress and bedding)
Twin: 850 lbs. | Full: 850 lbs. | Twin XL: 850 lbs. | Queen: 850 lbs. | Split Beds: 850 lbs. per side
- This product will support the recommended weight limits when weight is distributed evenly across the base. This product is not designed to support or lift this amount in the head or foot sections alone. Consumers should not enter or exit the bed when any portion of it is in the raised position. Do not sit on the head or foot sections while in the raised position. Exceeding the recommended weight restrictions or other misuse of this product could damage the bed and void the warranty.

SOUND

- The massage function will emit an audible tone during operation. The volume of this tone is directly related to the location and environment. For example, a bed placed on wooden flooring may increase the audible tone of the massage function, where a bed placed on carpet may emit a softer tone.

PRODUCT RATINGS

IMPORTANT: USE THIS PRODUCT ONLY AS DESCRIBED IN THESE INSTRUCTIONS. DO NOT MODIFY ANY PARTS OR COMPONENTS.

MOTOR RATINGS

- Power-Flex 3 Adjustable Base motors are not designed to operate for more than two continuous minutes within an 18-minute time period. Exceeding this rating will shorten the life of the motors, and void the warranty.

POWER RATINGS

- **INPUT:** AC 100-240V - 50/60Hz, 1.5 Amp
- **OUTPUT:** DC 29V-2A
- This product is designed to have no maintenance requirements by the user. Please do not open any motor compartments, alter the wiring, modify the base, or change the product in any way as it will void the warranty.

FCC COMPLIANCE

- Operates on 2.4 GHz frequency transmitter.
- This device complies with part 15 of the FCC Rules. Operation is subject to the following two conditions: (1) This device may not cause harmful interference, and (2) this device must accept any interference received, including interference that may cause undesired operation.
- To comply with the FCC RF exposure requirements, no change to the antenna or the device is permitted. Any change to the antenna or the device could result in the device exceeding the RF exposure requirement and void user's right to operate the device.

For any questions or concerns regarding this product please contact MALOUF® directly.

WWW.MALOUFSLEEP.COM • CUSTOMERSERVICE@MALOUFSLEEP.COM • 800.517.7179

CONTENTS

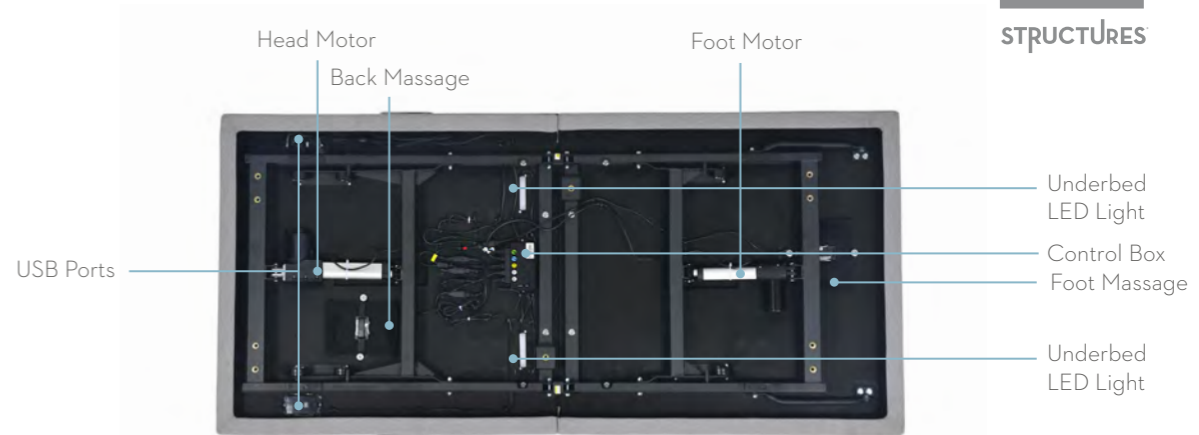
■ Overview	1 - 2
■ Assembly	3 - 10
■ Remote Control	11 - 16
■ Massage	17 - 18
■ Electrical Components and Backup Battery	19 - 24
■ Synchronizing Two Bases	25 - 28
■ Test All Functions / Additional Help	29 - 32
■ Warranty Information	33 - 34

OVERVIEW

Get to Know Your Product

Before beginning assembly of the Power-Flex 3 Adjustable Base, please take a moment to familiarize yourself with the parts and location of components. See the adjacent image for a detailed overview.

If any parts or components are missing, or are different than shown in the adjacent image, do not attempt to complete the assembly process and contact customer support: 800.517.7179 / customerservice@maloufsleep.com.



ASSEMBLY

Before You Begin



A minimum of two people are required to assemble this adjustable base.



Open box on the floor in the flat position, bottom facing up, to avoid damage.

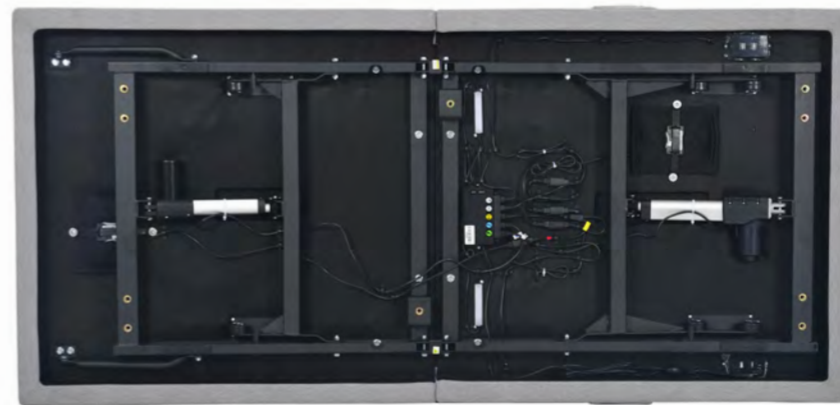
Step 1:

Place the box in the room the bed will be used with the bottom of the box facing up. Carefully remove the binding straps and packaging material, taking care not to puncture the box with any sharp objects.

Step 2:

Remove the bed base from the box and set mattress (top) side down on the floor (see image A). Remove all plastic and zip ties. All components and parts are located in the underside of the base. Remove attached parts and set aside in preparation for assembly (see image B). Check to make sure all parts have been included and are not damaged (see page 2 for a list of all parts and components).

A



B



ASSEMBLY

Step 3:

Hand tighten all six legs (seven for King size) into the bed frame until secure. Note that there are two location options for each leg, an outside placement or an inside placement. Tighten the legs in the location of your choosing, maintaining a consistent inside or outside location throughout. Take care not to over tighten (see image A). To reach a 15-inch height from floor to top of deck one should use a 3-inch + 3-inch + 6-inch leg assembly.

Note: Ensure the bottom of each leg has an end cap attached (see image B).

Step 4:

Install the power cord by connecting the cord jack to the receptacle on the bed motor (see image C). Be sure the cord is connected completely and securely.



Middle Leg on King Size Only

Head

Leg Positions

Foot



ASSEMBLY

Step 5:

With two to four people, lift the bed by the metal frame and turn it over so the mattress (top) side is facing up (see *image A*). Take caution not to lift the bed with the fabric, or to use the legs as pivot points causing angled pressure as this may cause damage. Move the bed to the desired location.



ASSEMBLY

Step 6:

To install the mattress retainer bar, insert one end of the retainer bar in its respective slot until it slides fully into place (see *image A*). Flex retainer bar to insert the other end on the other side.

Step 7:

Plug the power cord into the wall outlet and run the test on pages 29 – 30 of this manual. You may want to familiarize yourself with the remote control functions (pages 17 – 18) prior to running the test.

A



REMOTE CONTROL

Overview

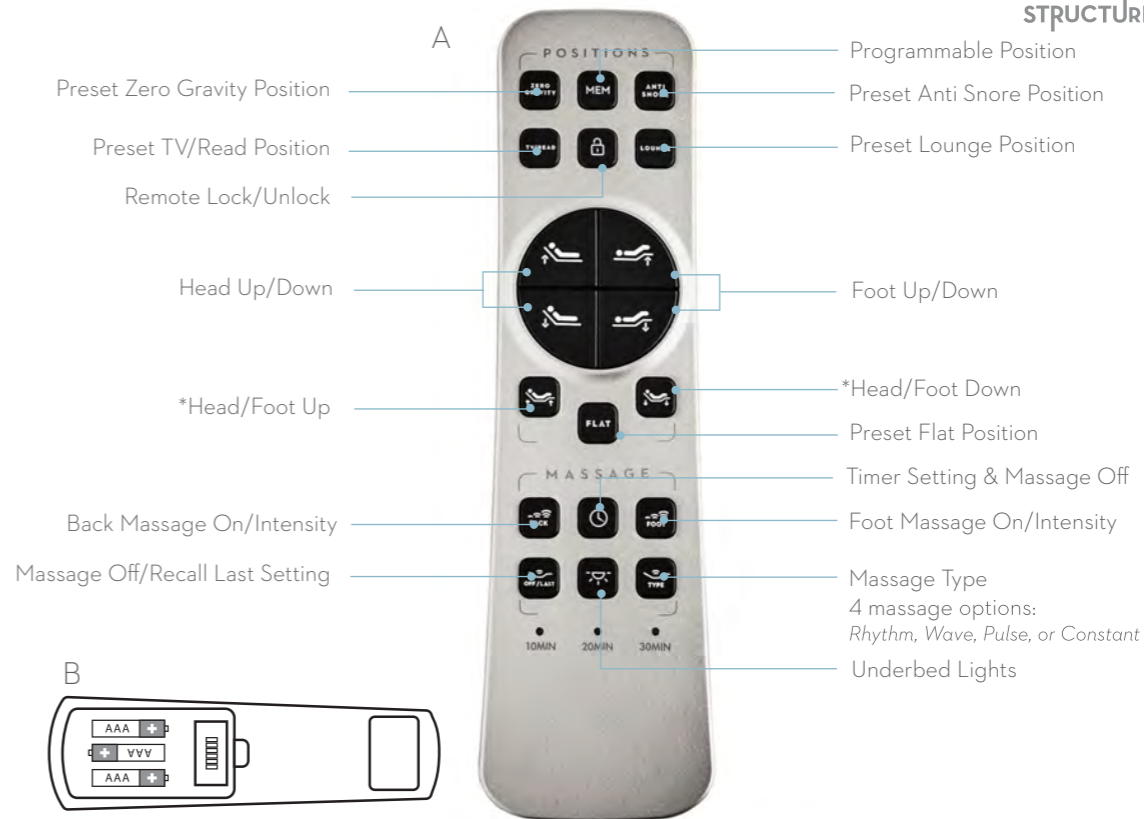
All of the functions of the bed can be operated with the remote control. The remote control comes with pre-programmed buttons that will automatically adjust when pressed, or you can manually control adjustments using the arrow buttons on the remote control. See the diagram to the right (see *image A*) for a complete list of remote control functions.

Remote Control Battery Installation

Remove the battery cover on the back side of the remote control. Insert the three included AAA batteries (see *image B*).

Programmable Buttons

Zero Gravity, Anti Snore, TV/Read, and Lounge are all pre-programmed positions that can be adjusted and saved to match your preference. Additionally, the Power-Flex3 features one memory position (MEM) that can be programmed for your convenience. Simply adjust your bed to the desired position, then hold down the Flat button, then simultaneously press the position button you want to reprogram.



REMOTE CONTROL PAIRING

Overview

The original remote that comes in the box is already paired to the foundation. No further action is required. In the event that the remote is not paired with the base, begin by checking the following.

Step 1:

Ensure the remote batteries are functioning. Replace if necessary.

Step 2:

Ensure the power cord is plugged into a powered source.

Step 3:

Press and hold the Head Up and Foot Up buttons simultaneously (see image A). Then also press and hold the blue button on the control box cord until you hear two beeps (see image B).

A



B



The blue pairing button can also be used to lower the base to the flat position in case of an emergency (see *battery backup* section on pages 23 - 24).

REMOTE CONTROL

Lock Safety Feature

The remote control can be locked to prevent movement of the bed. When the remote control is locked, no buttons will function and the Lock button will illuminate red when a button is pressed.

To lock the remote control:

Press and hold the Lock button for 5 - 7 seconds, or until the button stops flashing red.

To unlock the remote control:

Press and hold the lock button for 5-7 seconds, or until the button stops flashing. The remote is now unlocked and ready to use.



Press and hold
to lock or unlock

MASSAGE

Message Function

To activate the massage function, press the desired Back or Foot button once. To adjust the intensity of the massage function, press the Back or Foot button again. There are three levels of intensity.

Message Timer

With the massage function in use, press the Timer button to select a 10, 20, or 30 minute massage. The light below will illuminate indicating which timer setting is activated.

Message Type

There are four massage options: oscillate, wave, pulse or constant. Press the Type button to activate an alternate massage option.

Message Off/Recall Last Setting

With the massage function on, press the Off/Last button to turn off all massage functions. Press the button again to return to previous massage type and timer settings.



NOTE:
Allow the massage function to rest for 30 minutes after each use.

ELECTRICAL
COMPONENT
SETUP

Overview

The electronic components are pre-installed and no assembly is necessary; however, some setting and input locations are important for proper setup and functionality (see *images A and B to become familiar with input, setting and part locations*).



POWER-FLEX™ 3

OWNER'S MANUAL
ADJUSTABLE BASE

ELECTRICAL COMPONENT SETUP

USB Ports

USB ports are located under the head portion of the bed base at two locations (see *image A*). To access the USB ports, press the Head Up button to raise the bed and reveal the USB ports. Once your device is plugged into the USB port, you may lower or adjust the bed to your preference.



BACKUP BATTERY

Overview

Important: *The backup battery is only to be used in case of a power outage. Batteries are not to be used for normal operation of the bed. The backup battery will not support repeated movement for an extended period of time.*

Backup Battery Use

Use two 9V batteries only (not included). If a power outage occurs, install the 9V batteries into the power supply to allow temporary power to the base (see image A).

Installing Batteries

Unplug the power cord from the outlet and remove the cover from the compartment on the underside of the power supply (see image B). Place two 9V batteries inside, close the cover and plug the power cord back into the wall outlet. **After power is restored, unplug power cord, remove the batteries, then plug the power cord back into the wall for normal use.**

A



B



SYNCHRONIZING TWO BASES

(for Twin XL and
Split sizes only)

OPTION 1: WIRELESS

Pair Single Remote to Operate Two Bases Simultaneously

Step 1:

Plug Base A and Base B into
your outlet.

Step 2:

With Remote A paired to Base A and
Remote B to Base B, make sure each
remote moves with its respective base.
If not, pair both remotes by following
the instructions on pages 13 and 14.

Step 3:

Pair Remote A to Bases A and B by
pressing and holding the Head Up and
Foot Up buttons on Remote A. Then

press the blue Pairing button on the power
cord for Base B. You should hear two beeps.

Step 4:

Ensure Remote A moves both bases by
pressing any button on the remote control.

Pair Second Remote to Operate Two Bases Simultaneously

Step 5:

On Remote B, press and hold the Head Down
and Foot Down buttons at the same time.
Within five seconds, press and hold the Head
Up and Foot Up buttons on Remote A. After
two seconds, release the buttons on Remote A
then Remote B.

Step 6:

Ensure each remote moves Base A and Base B.
If any of these steps didn't work, unplug both

bases and remove the batteries
from each remote. After five
minutes, reconnect Base A and Base
B to the power source and return
the batteries to Remote A and
Remote B. Then repeat steps 1-6.

NOTE: To operate the beds
separately again, press the Head
Up and Foot Down buttons
simultaneously on Remote B. Follow
the instructions on pages 13 and 14
to pair your remote with the desired
base.



SYNCHRONIZING TWO BASES

(for Twin XL and
Split sizes only)

OPTION 2: WIRED

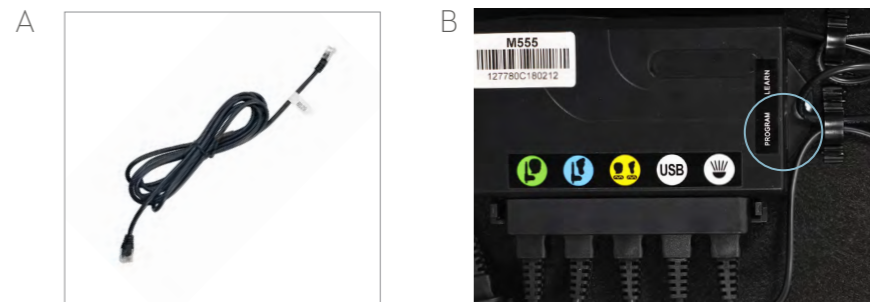
Step 1:

Place two Twin XL or split size adjustable bases next to each other in desired location. Plug in Sync Cable (see *image A*) to the control box of each base into the "Program" input (see *image B*) on the control box.

Step 2:

With the connecting cable installed, use remote and test all functions of the bed base. (see *pages 29-30*). If remotes are not working, troubleshoot the problem by following the instructions on (*pages 13-14*).

The two bases are now connected and ready for normal use.



TEST ALL FUNCTIONS

Overview

To ensure proper setup, use remote and test all functions for 3 seconds.

Important: Always return the base to the flat position when switching between preset options.

- Zero Gravity Preset
- Anti Snore Preset
- TV/Read Preset
- Lounge Preset
- Memory
- Remote Lock
- Head Up
- Head Down
- Flat
- Head/Foot Up
- Head/Foot Down
- Foot Up
- Foot Down
- Back Massage/Intensity
- Foot Massage/Intensity
- Timer
- Massage Off/Last
- Massage Type
- Underbed LED Lights



ADDITIONAL
HELP

If one or more functions of the bed have stopped working or one or more of the remote control buttons activate the wrong function:

Check under the bed base to verify the wired connections are secure and there are no cords or bedding obstructing the movement of the base. If the remote control activates the wrong function, the motors are plugged into the wrong input on the control box. Switch the input location of the cords on the control box.

The remote control lights no longer illuminate / the remote won't operate the bed functions:

Ensure remote lock has been deactivated (see pages 15 - 16). Make sure the batteries are installed correctly or install three new AAA batteries into the remote control.

The remote control lights illuminate, however no functions of the bed will operate:

Check to ensure the power cords are properly connected.

Unplug the base for 1 hour to reset the electronic components.

Plug base into a different electrical outlet, or test current outlet with another working appliance. A grounded electrical surge protector is recommended with use of this product.

For further assistance contact us at: 800.517.7179 / customerservice@maloufsleep.com

NOTES:

Serial Number :

**20-YEAR
LIMITED
WARRANTY**

WHAT IS COVERED

This warranty covers any defects in materials or workmanship under the conditions and exceptions stated below.

HOW LONG COVERAGE LASTS

This warranty runs for up to 20 years from the date of purchase, according to the tiers set forth below.

WHAT MALOUF® WILL DO

YEAR 1:

Warranty covers defects in the workmanship or materials for a period of 1 year from the date of purchase. Malouf® will send replacement parts for any defective part to the original purchaser ONLY, and Malouf® will pay all authorized labor and transportation costs associated with the repair or replacement of any parts to residents within the continental US.

YEARS 2 - 5:

During the years 2 - 5 from the date of purchase, Malouf® will offer replacement parts for any defective part to the purchaser. The purchaser shall bear all service, transportation, labor, and shipping costs associated with the repair or replacement of the defective part(s).

YEARS 6 - 20:

During the years 6 - 20, Malouf® will offer replacement parts for any mechanical bed part (excluding electronics, electrical components, drive motors, and massage motors). Purchaser shall pay 1/15th of the replacement cost of the defective part multiplied by the number of years since 5 years after the warranty commencement date, and Malouf® shall bear the remainder of the cost of the replacement part. The purchaser shall bear all service, transportation, labor, and shipping costs associated with the repair or replacement of the defective part(s).

HOW TO GET SERVICE

Email warranty@maloufsleep.com to submit your warranty claim. Please keep your receipt so that we may process your warranty request.

HOW STATE LAW APPLIES

This warranty gives you specific legal rights, and you may also have other rights, which vary from state to state.

The foregoing warranty shall be exclusive and in lieu of any other warranty, express or implied, including warranties of merchantability and fitness for a particular purpose and all other warranties otherwise arising by operation of law, course of dealing, custom, trade, or otherwise. Malouf® shall not be liable for any consequential damages or losses arising from the purchase, installation and/or use of this product.

For any questions or concerns regarding this product please contact MALOUF® directly.

WWW.MALOUFSLEEP.COM • CUSTOMERSERVICE@MALOUFSLEEP.COM • 800.517.7179

