

easyWISP is a comprehensive business and network management system for Wireless Internet Service Providers (WISP's). The EZ-1000G 12volt operation access control router is managed by the easyWISP EZ-Cloud to implement subscriber data controls.



EZ-Cloud Overview

Sales: Add and manage subscribers.

Provisioning: Schedule subscriber installation work orders.

Activation: Activate new subscribers onto the network.

Authentication: CPE MAC verification with RADIUS server for WPA2-enterprise.

Subscriber rate plan management: Create multiple cost/performance tiers for subscribers.

Fixed broadband billing: Subscriber pre- and post-paid billing, with invoicing, collection notification and past-due disable.

Mobile broadband sales: Access code generation and authentication for non-subscribers.

Network monitoring: Detection and alarm of easyWISP and subscriber data link failures.

Customer relationship management: A CRM portal that subscribers use to access account data and submit a support ticket.

Reports: Report categories include billing, maintenance, data traffic and support.

For further information: See the easyWISP Cloud data sheet for additional information about Cloud features.

The technology to start a WISP is now plug and play

Until recently, starting a WISP business required many years of network experience with a high degree of technical skill. The current generation of cloud managed WISP systems has reduced the technical knowledge requirements to start a WISP business. Now easyWISP has further simplified the process of starting and growing a WISP business; easyWISP controllers are self-configuring and the easyWISP EZ-Cloud management system is as simple to use as accounting software. The only technical skills required are for the configuration of wireless access points.

Functions of the easyWISP access controller

Each easyWISP router is a dedicated access controller that processes several tasks, which are essential for fixed broadband subscriber management:

- Authenticate each subscriber CPE wireless onto the network.
- Apply the rate plan that each subscriber chooses.
- Enable/disable access according to the billing system status.
- Monitor the connection status with each subscriber CPE.
- Update the EZ-Cloud with network status and traffic.
- Captive portal to display CRM access and off-line status.
- Mobile broadband access code authentication.

A world-class WISP management system with no charges

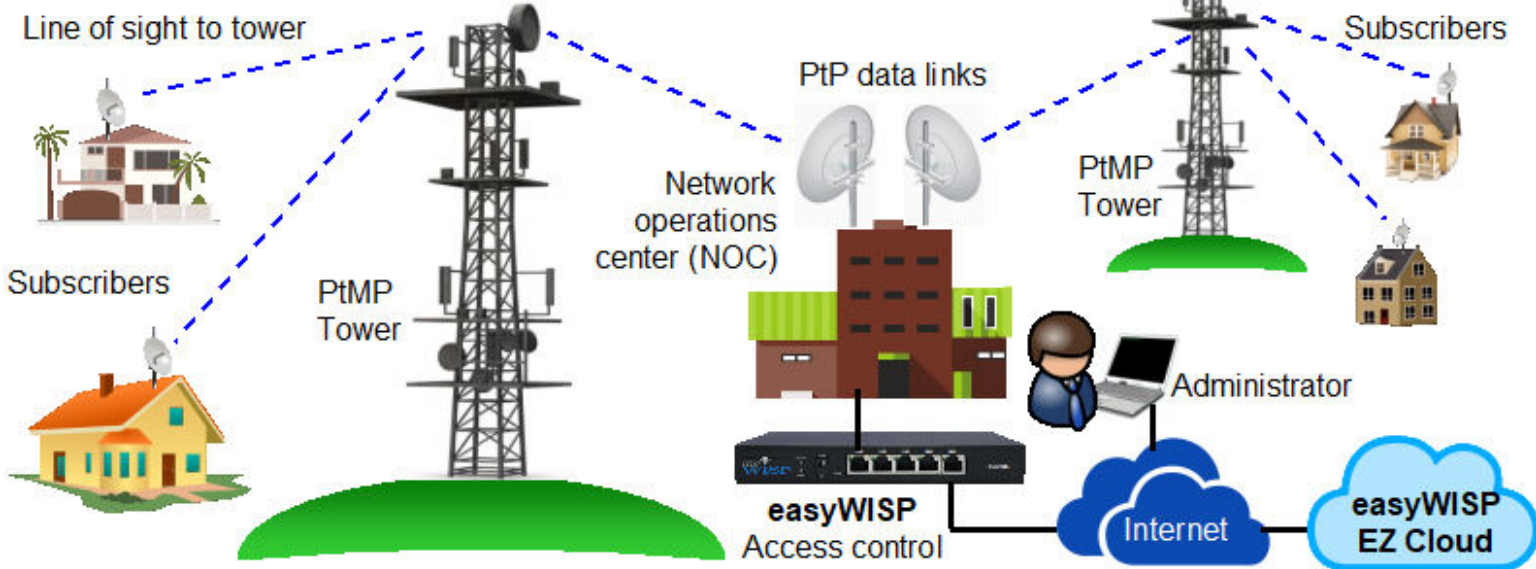
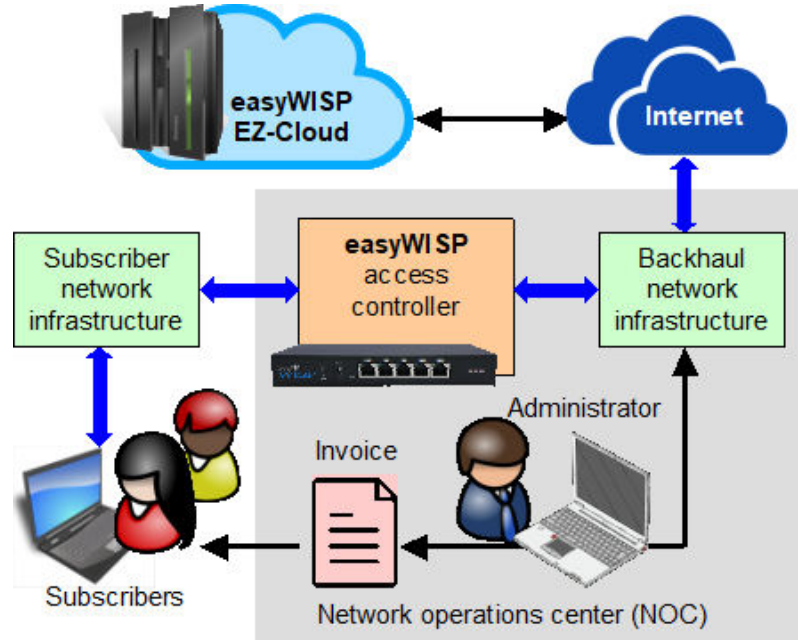
WISP's are accustomed to paying a fee which might be \$1 for each subscriber each month when using a cloud management system. Not with easyWISP, the unlimited EZ-Cloud service is included free with each easyWISP access controller. There is no limit to the number of subscribers and multiple easyWISP access controllers can be added to one easyWISP EZ-Cloud account. This is possible because each easyWISP controller is a computing element in the Cloud network and processes all access transactions. The EZ-Cloud manages batch tasks, which greatly reduces the cloud operating overhead. After programming each easyWISP controller manages network access without EZ Cloud supervision.

EasyWISP in use:

The easyWISP access controller is installed in the network operations center to control the data flow between the subscribers and the Internet. The WISP administrator connects to the easyWISP EZ-Cloud to add and bill subscribers. The EZ-Cloud will alert the administrator if any network problem occurs.

Multiple easyWISP controllers can be added to one easyWISP EZ-Cloud account for applications where the PtMP wireless tower will not be backhauled to the network operations center. This occurs when the WISP installs a PtMP antenna on a mobile phone tower that has Internet access, or else the WISP installs a satellite backhaul antenna at the PtMP antenna site. In both cases an easyWISP controller is installed at the PtMP tower.

The easyWISP EZ-Cloud manages multiple easyWISP controllers transparently without any type of configuration or interaction by the WISP.



EZ-1000G Technical Specifications

Features

- ▶ Integration with the Cloud management system
- ▶ The cloud monitors each EZ product for failure
- ▶ Plug and play with the setup wizard
- ▶ Authentication of each client CPE radio
- ▶ Monitoring of each CPE link for failure
- ▶ Download local database of subscribers from Cloud
- ▶ Apply the rate plan for each subscriber
- ▶ Activate/deactivate subscribers on Cloud command
- ▶ Monitor for any attempt of unauthorized access

Ethernet: dual WAN for fail-over

- ▶ WAN1, RJ-45 Gb
- ▶ LAN1 to LAN3, RJ-45 Gb

Throughput

- ▶ 1000 Mb/s for subscriber data traffic

Authentication

- ▶ CPE MAC address authentication
- ▶ External RADIUS authentication for WPA2-enterprise

Operation

- ▶ Industrial grade equipment suitable for environment, 32degF to 100degF with fanless low-voltage operation

Power

- ▶ 12volt supply, 2A, 24W

Dimensions:

- ▶ Enclosure: 154mm x 127mm x 36mm

Warranty

- ▶ 1 year for product defects

Call 1-800-213-0106 for further information. Fire4 Systems Inc, 6073 NW 167 St., Suite C12, Hialeah, FL 33015, USA.