

# Revlite Introduces **4 NEW** Categories

Revlite incorporates the latest in LED technology into our product line by utilizing LEDs with the correct balance of CRI and GAI (Gamut Area Index). The Beauty Series will target Cosmetic Counters and Class A will focus on overhead lighting in a Retail Environment.

*Beauty &  
Class A  
Series*

*Carbon  
Collection*

Carbon and composite materials are integrated into our LED lighting collection for display and cabinet applications. The 3D appearance of carbon will certainly enhance your display and reflect the highest quality of your products.

Revlite introduces its Zoom series of products in Track, Cabinet and Down Light configurations. A simple solution that gives you the flexibility to change beam angles from a single fixture with vertical and horizontal rotation.

*Zoom  
Series*

*Slim  
Line  
Series*

Our Slim Line Series has a very small profile that gives you the Design choice to compliment your Display Case. Available in Carbon Fibre, Polished Aluminum, Gold, Bronze, Silver and Custom Colors.

## Beauty Series

### The Best for Every Skin Tone



#### Shining Light on Skin Tones Research

Xicato Beauty Series LED module was created and evaluated alongside other light sources in a cosmetics study by University College London, Nulty+ Lighting Design, Xicato, and a major global cosmetics brand. Beauty Series emerged from extensive trials as the light source that best balanced the accurate color discrimination required when matching foundation to skin tone. Participants in the study reported feeling better and looking better under Beauty Series, and rated the light as the best overall.

Managers and customers in cosmetics stores in which Beauty Series is installed have commented on how soft and natural the light feels, while at the same time making it easier to choose and apply makeup. It eliminates the need to place workstations near windows or go outside to accurately assess makeup on the skin.

# Beauty Series

Application:  
Cosmetics Counter Retail



Gimbal 2 | Wattage: 8W  
Lumen: 720lm  
Beam Angle: 20° / 30° / 45°



LR16-4 | Wattage: 12W  
Lumen: 1100lm  
Beam Angle: 25° / 40° / 50°



30600-L1



30600-L2

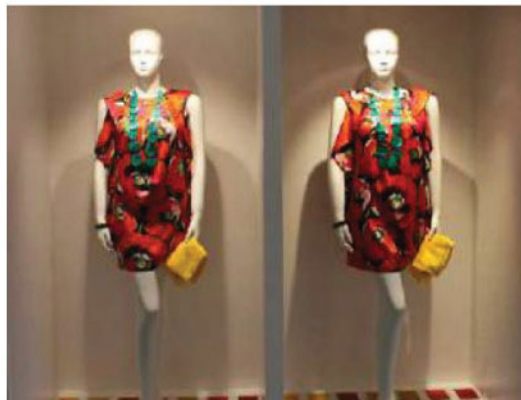
Two new Lamp Designs incorporating the Beauty Series Light Source. Lamps are 10 watts and 800 lumens with dimming controls and diffused lens giving you the best options for the perfect light at the make up counter.

# Class A series

## COLOR MATTERS!

The discussion continues on what is the best CRI to optimize the true color of products. Researchers at the Lighting Research Institute has established that the correct blend of CRI and GAI (Gamut Area Index) will measure how light is perceived by the Human Eye.

LRC found that light sources providing a GAI between 80 and 100 will provide good color discrimination and make objects in the scene appear both vivid and natural. In other words, consumers prefer a light source that enhances color without distortion or making the object look unnatural. All of our overhead lighting for Retail environment are now available with Class A Series LEDs by Bridgelux.



# Class A series

Application:  
[Retail](#) [Hospitality](#)

[Museum](#) [Gallery](#)



L100-RO

Wattage: 25-35W  
 Lumen: 2000-3000lm  
 Beam Angle: 15° / 24° / 50°



L100-SQ

Wattage: 25-35W  
 Lumen: 2000-3000lm  
 Beam Angle: 15° / 24° / 50°



TL-35

Wattage: 12-35W  
 Lumen: 1200-3000lm  
 Beam Angle: 15° / 25° / 40°



LR16  
 Milan  
 Series

Wattage: 12W  
 Lumen: 1100lm  
 Beam Angle: 15° / 24° / 40°



LR16  
 Milan  
 Series  
 Trimless

Wattage: 12W  
 Lumen: 1100lm  
 Beam Angle: 15° / 24° / 40°



Drop  
 Zone  
 Series

Wattage: 12W / 30W  
 Lumen: 1100lm / 2700lm  
 Beam Angle: 15° / 24° / 38° / 50°

# Carbon Collection

Application:  
[Cabinet & Display Case](#)



Wattage: 6W / 8W / ft  
 Lumen: 540lm / 720lm / ft  
 Custom Length and Height Available

Luna

Carbon Options



End Cap Options



The ultra slim series of linear lights (19mm diameter) was designed specifically for retail showcases and glass display cabinets.

The slimmest lighting fixture profile on the market today was intended to elegantly replace the bulky fluorescent fixtures commonly found in showcases.



Wattage: 3W  
 Lumen: 300lm  
 Custom Length Available

Stem Light

Carbon Options



Hinge Options



The ultra slim LED stem light is designed specifically for retail showcases and glass display cabinet. It is used for illuminating showcases in shops, art galleries, hotel lobbies and commercial office spaces.

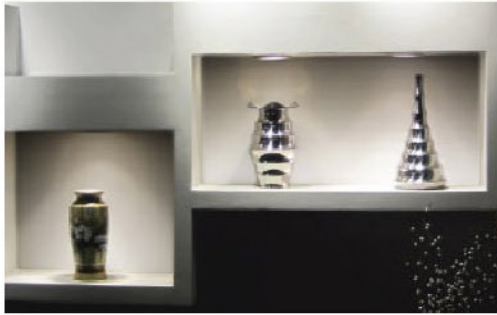
With adjustable head and straight stem, this LED spot light is a high colour rendering fixture, designed for areas where spot illumination is a design priority.

# Zoom Series

Application:

Retail Hospitality Museum Gallery Residential

One Solution – Multiply Beam Angles



Revlite introduces its Zoom series of products in Track, Cabinet and Down Light configurations. A simple solution that gives you the flexibility to change beam angles from a single fixture with vertical and horizontal rotation.



LR16MS-ZL-8 | Wattage: 8W  
Lumen: 700lm  
Beam Angle: adjustable 15°-45°



LR16MS-ZL-12 | Wattage: 12W  
Lumen: >1000lm  
Beam Angle: adjustable 15° - 90°



4003-Z | Wattage: 8W  
Lumen: 700lm  
Beam Angle: adjustable 20°-60°



TR-ZO8 | Wattage: 8W  
Lumen: 700lm  
Beam Angle: adjustable 15°-90°



TR-Z15 | Wattage: 15W  
Lumen: 1300lm  
Beam Angle: adjustable 15°-90°

# Slim Line Series

Application:

Retail



Our Slim Line Series has a very small profile that gives you the Design choice to compliment your Display Case. Available in Carbon Fibre, Polished Aluminum, Gold, Bronze, Silver and Custom Colors.

30600-SL | Wattage: 6W / ft  
Lumen: 500lm / ft  
Custom Length & Height Available



The Art of Modern Lighting

For detailed specifications and to review our entire product line, go to: [www.revlite.com](http://www.revlite.com)

50 Ironside Crescent, Unit 4,  
Toronto, ON M1X 1G4 Canada

Phone: 416-299-7211  
Email: [info@revlite.com](mailto:info@revlite.com)

