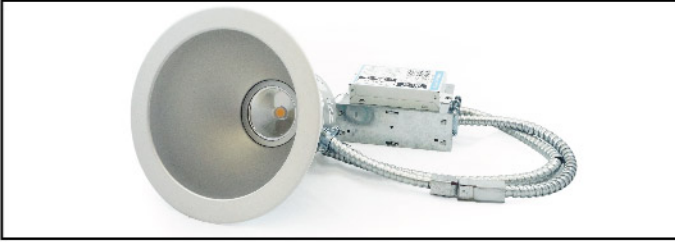


Type	
Project	
Catalog No.	



DESCRIPTION

LED down-light for retrofit of installed 6 / 8" nominal commercial "pan-style" housings with incandescent, compact fluorescent (CFL), or high intensity discharge (HID) sources. All installation can be performed from the room side without removing the existing fixture. This fixed reflector luminaire houses a specification grade Modular LED down light package. Multiple lumen packages to replace the installed base of CFL or HID sources with energy savings up to 50%.

FEATURES

Construction

- Innovative reflector and clip design that simultaneously retains and centers the fixture in the existing mounting pan
- Quick disconnects used for ease of maintenance protected by .036" galvanized metal housing
- UL rated junction box constructed of .050" galvanized metal used as mount for LED driver / power supply
- 18" flexible armoured supply wire connections allow for convenient placement of power supply / junction box in tight locations

Optics

- LED light source with clear lens recessed in a specular reflector with a 4 3/4" - 6" recess for superior glare control
- Aluminum parabolic reflectors are optically designed to maximize lumen output and to provide superior glare control
- Anodized finishes for open reflectors are semi-specular clear diffuse or pewter. A white polyester powder coat also available
- CRI is >83

Thermal Management

- Proprietary heat sink design provides superior thermal management ensuring a minimum of 50,000 hrs of operation while maintaining a minimum of 70% lumen output.

Electrical

- Power supply options allow for excellent line voltage dimming down to 10% light output or less
- 0-10V dimming also available
- Non dimming power supply allows for cost reduction
- Power supplies and LED combinations from 8W-12.6W

Listings

- cULus listed. UL listed for damp locations
- RoHS compliant
- Fixture is certified to UL 1598 and UL 8750 standards by Underwriters Laboratories. Certified to IP65 per IEC 60598

Photometrics

- Photometrics tested to IESNA LM-79-80 standard by an accredited photometric laboratory (ISO 17025 accredited by NVLAP)

Warranty

- One (1) year warranty against defects in materials and workmanship. Warranty period is for 5 years when installed according to RevLite installation instructions and the electrical industry best practices. The five (5) year warranty is the direct replacement of LED lamps and drivers for defects resulting in a lumen depreciation of the fixture of 30% or greater.

SPECIFICATIONS

Input Voltage	120-277 VAC (universal)	Beam Angle	45° / 60°
Wattage	8W / 12.6W	Power Factor	>0.9
Colour Temp	2700K / 3000K / 4000K / 5000K	Lamp Life	50,000 hrs
Dimming	0-10 V or triac where applicable	Environment	IP20
Lumen Output	Varies with LED and power level	Certification	cULus
CRI	>80	Warranty	5 years - see published warranty terms for details

* Product specifications subject to change without notice.

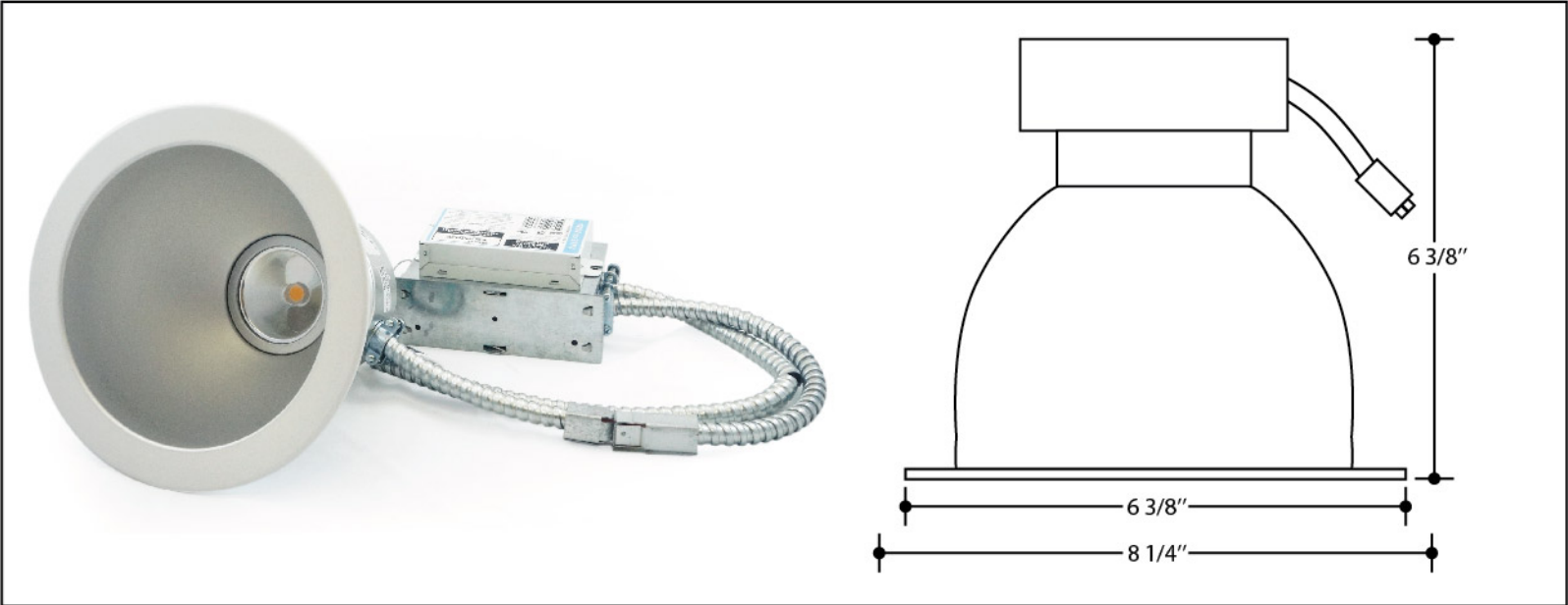
ORDERING INSTRUCTIONS

MODEL	DIAMETER	COLOUR TEMP	BEAM ANGLE	FINISH	DRIVER
RL	06: 6" 08: 8"	27: 2700K 30: 3000K 40: 4000K 50: 5000K	45: 45 Deg 60: 60 Deg	BK: Black WH: White SL: Silver	ND: Non-Dimming TR: Triac 10: 0-10 V

Example: RL-06-40-45-BK-ND = RL, height of 6", 4000K, 45 deg beam angle, black finish, non-dimming

Type	
Project	
Catalog No.	

IMAGE & DRAWING



DESCRIPTION

LED down-light for retrofit of installed 6 / 8" nominal commercial "pan-style" housings with incandescent, compact fluorescent (CFL), or high intensity discharge (HID) sources. All installation can be performed from the room side without removing the existing fixture. This fixed reflector luminaire houses a specification grade Modular LED down light package. Multiple lumen packages to replace the installed base of CFL or HID sources with energy savings up to 50%.