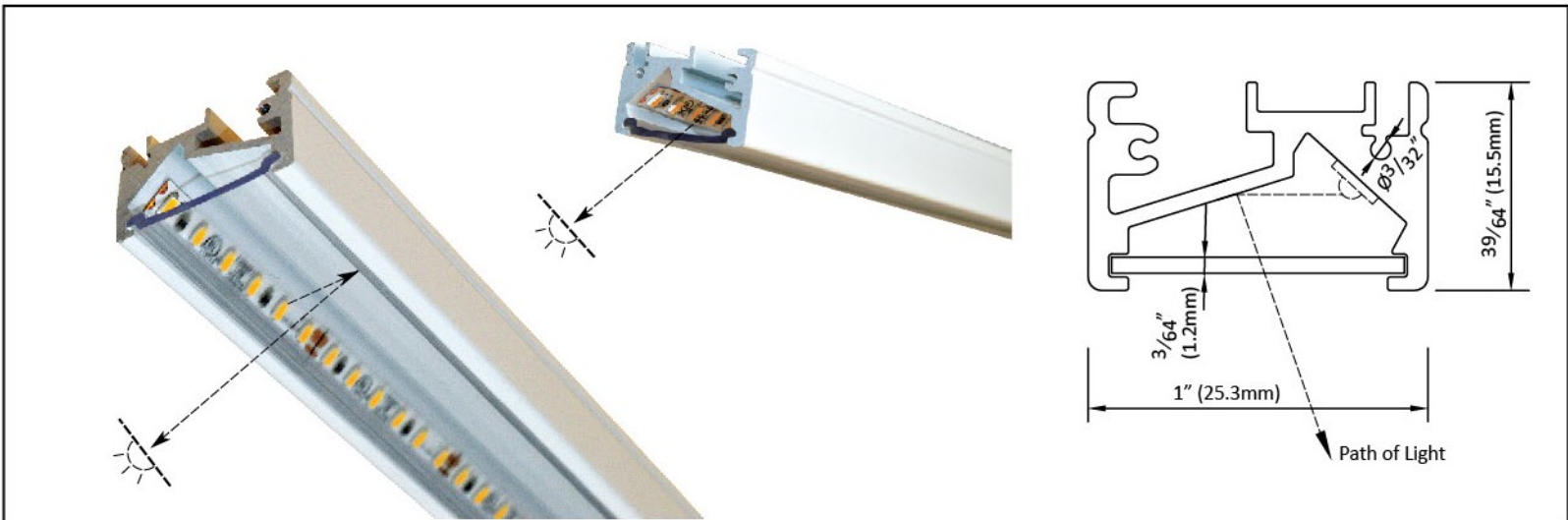


Type	
Project	
Catalog No.	
Date	October, 2019



**DESCRIPTION**

- This fixture was specifically designed as a high output light to optimally illuminate shelving with an asymmetric optics architecture ensuring the shelf is evenly lit without intrusion into the sightlines of the retail customer.
- Revlite offers this fixture as a totally customized piece for the price of Off-the-Shelf.
- Available in multiple power options: 1.5W/ft to a very bright 6W/ft.
- Optional lenses; two flush lenses in clear or high diffusion frosted lens.
- High colour accuracy with 90+ CRI.
- Available in Custom lengths up to 8' (2.5m) in increments of 1/16" (1.59mm).
- Input and output connectors configured to customers choice of plug and play or hardwire power supply options.
- Connectology for Intelli-Track.
- All parts are stocking items ensure rapid build and shipping to site. On-site hook ups are DIY simple.
- 30600-45 can easily be mounted to metal shelves using magnetic clips, or simple mounting clips.
- cULus Listed.

**APPLICATIONS**

- Retail Displays
- Shelf Lighting
- Cove Lighting
- Showcase Lighting
- Under Cabinet Lighting

**SPECIFICATIONS**

Input Voltage	24V DC
Wattage	1.5 - 6W/ft
Colour Temp	3000K / 3500K / 4000K / 5000K
Dimming	Optional
Lumen Output	165 - 660 lumens/ft
CRI	>90
Beam Angle	130°
Power Factor	>0.9
Lamp Life	50,000 hours
Environment	IP20
Certification	cULus
Warranty	5 years - see published warranty terms for details

\* Product specifications subject to change without notice.

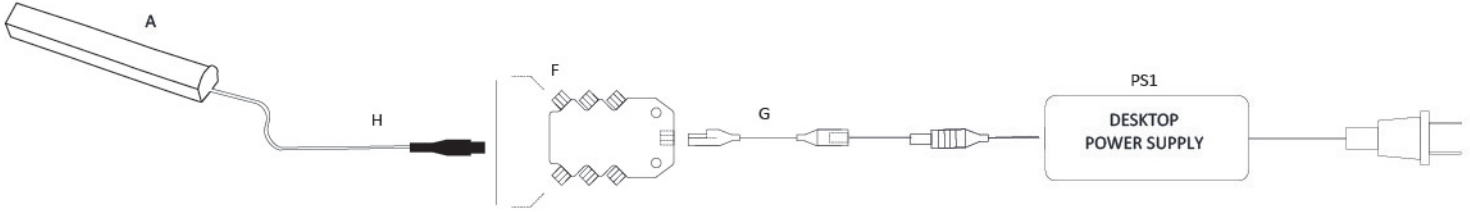
**ORDERING INSTRUCTIONS**

MODEL	LENGTH	WATTAGE	LENS	COLOUR TEMP
30600-45	Custom Length Up to 8' (2.5m) Increments: 1/16" (1.59mm)	1: 1.5W/Ft 3: 3W/Ft 4: 4W/Ft 6: 6W/Ft	CL: Clear FR: Frosted	30: 3000K 35: 3500K 40: 4000K 50: 5000K

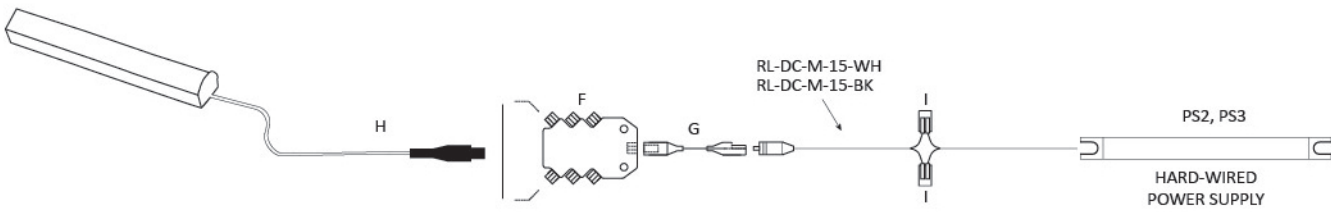
Type	
Project	
Catalog No.	
Date	December, 2018

**WIRING DIAGRAM - For reference purposes only. Not for installation. Not to scale.**

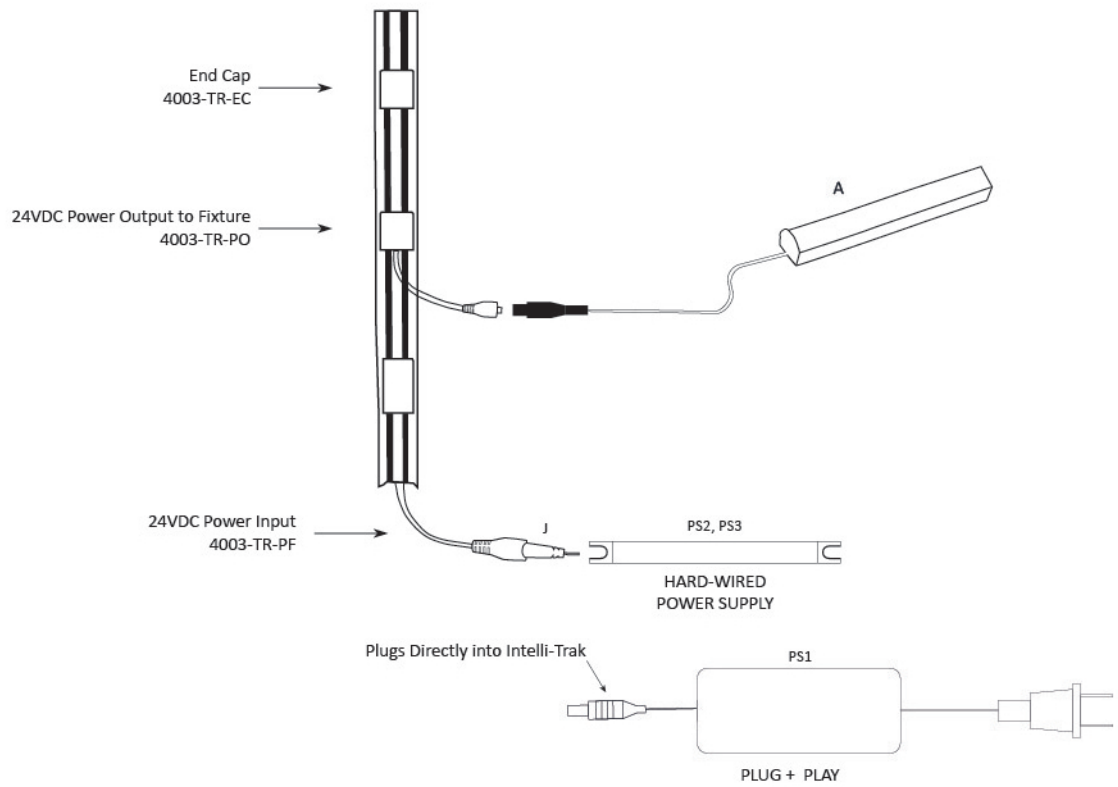
Option #1: Plug & Play to constant voltage 6 port junction box. Desktop power supply Wiring Diagram



Option #1: Hardwire. Hard-Wired Wiring Diagram to constant voltage 6 port junction box



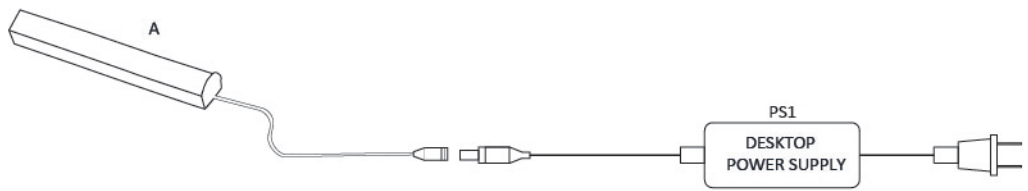
Option #3: Installation with Intelli-Trak



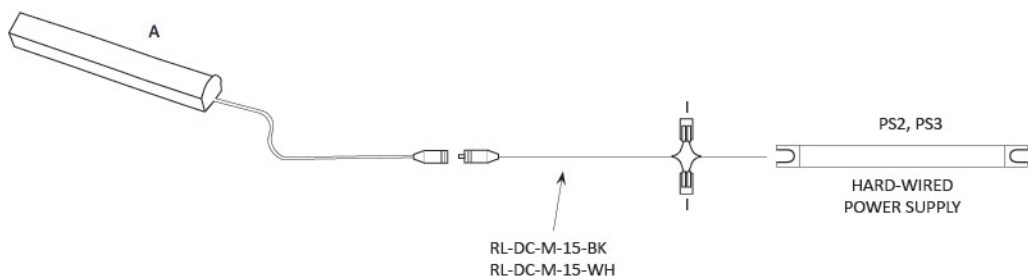
Type	
Project	
Catalog No.	
Date	December, 2018

**WIRING DIAGRAM - For reference purposes only. Not for installation. Not to scale.**

Option #2: Plug & Play. Desktop power supply Wiring Diagram



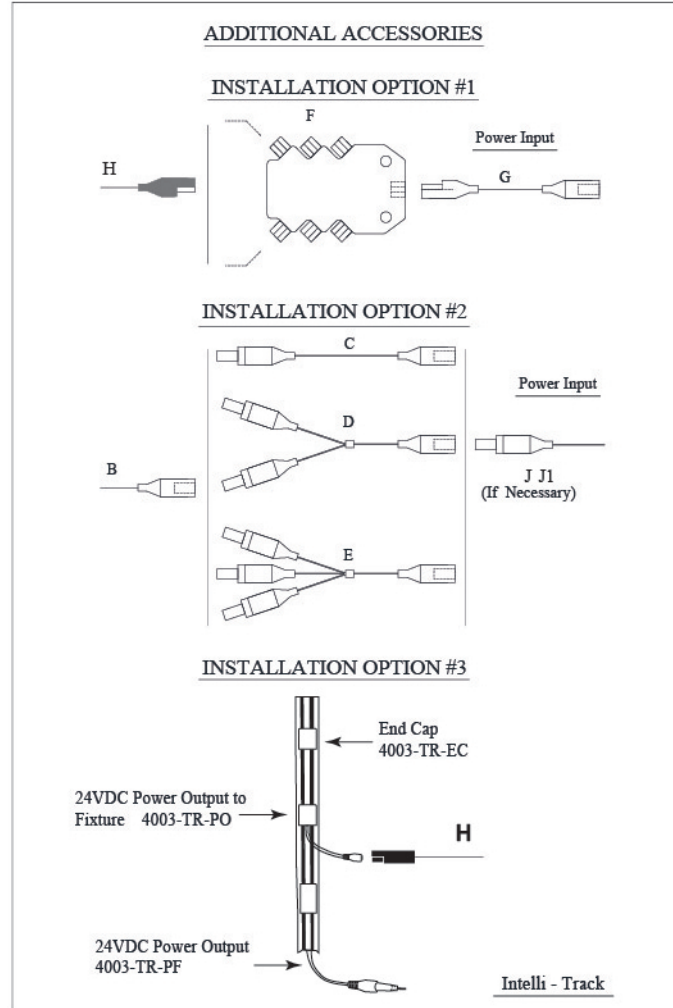
Option #2: Hardwire. Hard-Wired Wiring Diagram



Type	
Project	
Catalog No.	
Date	December, 2018

**PARTS LIST**

Part#	length	Description
A	30600-Series	8" - 48" (0.23m - 1.2m) Linear LED light fixture
B	30600-18-DC-WH	18" (450mm) Female DC barrel connector Black / White
C	RL-DC-1-BK RL-DC-1-WH	36" (915mm) DC barrel connector extension Black / White
D	RL-DC-SP-2	15" (380mm) DC barrel connector double splitter Black / White
E	RL-DC-SP-3	15" (380mm) DC barrel connector triple splitter Black / White
F	CV-6SP-1224	Constant voltage splitter box 6 port
G	CV-AD100-2-1224	4" (100mm) Adapter harness for plug and play power supply
G2	CV-75-EC-24W	39" (1m) Hardwire
H	CV-75-EC-24B	3" (75mm) CV connector
I	221-412	Wire clamp for hardwire connection
J	RL-DC-M-15-BK RL-DC-M-15-WH	15" (380mm) hardwire adapter to DC barrel connector
J1		
		Max. fixture (s) length @ 4 W/ft 13 W/M
PS1	RPS-2424-120-240 RPS-2460-120-240 RPS-2490-120-240	6 ft (1.8m) 15 ft (4.5m) 22 ft (6.75m)
PS2	RPS-VLM60W-24 RPS-VLM100W-24 RPS-LPV60-24 RPS-LPV100-24	15 ft (4.5m) 23.5 ft (7m) 15 ft (4.5m) 23.5 ft (7m)
PS3	RPS-LV60-24T-1227-KK RPS-LV96-24T-1227-JJ	15 ft (4.5m) 23.5 ft (7m)



**Note:** Maximum fixture length is 8'(2.4m) with center support. Longer fixture lengths are shown in the chart in case customer needs to connect more than one fixture per driver.

**FIXTURE WIRING ACCESSORIES - INSTALLATION OPTION #1**



**CV-1000-2-1224**

39" (1M) extension cable with PD connectors.



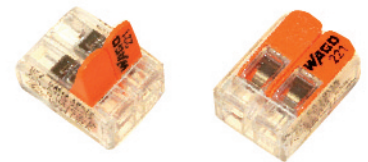
**CV-6SP-1224**

DC 6-port constant voltage distribution box with PD in/out connector.



**CV-AD100-2-1224**

12VDC 3"(75mm) adapter cable DC to female PD connector.



**221-412**

2 Conductor Lever Nut

- 28 to 12 AWG (stranded or solid)
- 600V / 20A Max
- Strip length: 3/8" (10mm)
- Operating temperature: 221 deg F
- cULus Class listed

Type	
Project	
Catalog No.	
Date	December, 2018

**FIXTURE WIRING ACCESSORIES - INSTALLATION OPTION #2**



**RL-DC-1-WH**  
**RL-DC-1-BK**  
**RL-DC-2.5-WH**  
**RL-DC-2.5-BK**

- 39" (1M) LED Driver Extension Cable. (RL-DC-1-BK, WH)
- 8' (2.5M) LED Driver Extension Cable. (RL-DC-2.5-BK, WH)



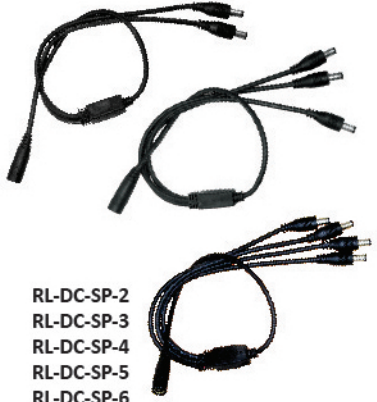
**RL-DC-F-15-BK**  
**RL-DC-F-15-WH**

- 12" (305mm) Female 2-Wire Input Power Connector
- For connecting plug-and-play supplies to hard-wire equipment or lighting controllers



**RL-DC-M-15-BK**  
**RL-DC-M-15-WH**

- 12" (305mm) Male 2-Wire Output Power Connector
- For connecting plug-and-play supplies to hard-wire equipment or lighting controllers



**RL-DC-SP-2**  
**RL-DC-SP-3**  
**RL-DC-SP-4**  
**RL-DC-SP-5**  
**RL-DC-SP-6**

- 15" (380mm) total length
- 2-Way split power feed
- 3-Way split power feed
- 4-Way split power feed
- 5-Way split power feed
- 6-Way split power feed



**RPS-VLM60W-24**

- Hard Wire DC Power Supply
- Non dimmable
- 5 1/4"L x 3/4"W x 3/4"H (133mm x 19mm x 19mm)
- Input / Output: 120-277VAC / 24VDC
- Wattage: 60W Max
- c-UL-us listed, Class 2



**RPS-VLM100W-24**

- Hard Wire DC Power Supply
- Non dimmable
- 5 3/8"L x 1.0"W x 3/4"H (137mm x 25mm x 19mm)
- Input / Output: 120-277VAC / 24VDC
- Wattage: 96W Max
- c-UL-us listed, Class 2



**RPS-LPV-100-24**  
**RPS-LPV-60-24**

- Hard Wire DC Power Supply
- Non dimmable, auto reset
- 7 1/2" L x 2"W x 1 1/2"H (190mm x 51mm x 38mm)
- Input / Output: 120-264VAC / 24VDC
- Wattage: 60W Max; 100W Max
- c-UL-us listed, Class 2
- IP 67



**RPS-2424-120-240**

- Desktop Power Supply
- May be dimmed with RL-DIM-PWM
  - 3 1/2"L x 1 7/8"W x 1 1/4"H (89mm x 48mm x 31mm)
  - Input/Output: 100-240V AC / 24V DC
  - Wattage: 24W Max.
  - cULus listed. LPS



**RPS-2460-120-240**

- Desktop Power Supply
- May be dimmed with RL-DIM-PWM
  - 4 1/2"L x 2"W x 1 1/4"H (114mm x 51mm x 31mm)
  - Input/Output: 100-240V AC / 24V DC
  - Wattage: 60W Max.
  - cULus listed. LPS



**RPS-2490-120-240**

- Desktop Power Supply
- May be dimmed with RL-DIM-PWM
  - 5 5/8"L x 2 1/2"W x 1 1/2"H (143 mm x 63mm x 38mm)
  - Input/Output: 100-240V AC / 24V DC
  - Wattage: 90W Max.
  - cULus listed. LPS.



**RPS-LV60-24T-1227-KK (Dimmable)**

- Hard Wire DC Power Supply
- Dimmable with RL-DIM-DVW1, auto reset, Triac Dimmable
- 7 1/2" L x 2"W x 1 1/2"H (191mm x 51mm x 38mm)
- Input / Output: 120-264VAC / 24VDC
- Wattage: 60W Max
- cULus listed, Class 2
- IP 67



**RPS-LV96-24T-1227-JJ (Dimmable)**

- Hard Wire DC Power Supply
- Dimmable with RL-DIM-DVW1 dimmer, Triac Dimmable
- Resettable
- 10"L x 3.3"W x 3"H (254mm x 86mm x 75mm)
- Input / Output: 120-277VAC / 24VDC
- Wattage: 100W Max
- cULus listed, Class 2
- Equipped with rain tight junction box rated for outdoor use