



● Manuel de l'utilisateur
● Manuel de pièces

Operator's manual ●
Parts manual ●

Pulvérisateur Commercial

Commercial sprayer

Modèle ● Model

C765

POMPES MC25 - APS71
PUMPS MC25 - APS71

MS Gregson inc.

4300 Vachon
Drummondville
Qc, Canada, J2B 6V4

Tel. 819-474-1910
Fax 819-474-5317
info@msgregson.com
www.msgregson.com

LISTE DES RUBRIQUES

INTRODUCTION

GARANTIE

REMISAGE POUR L'HIVER
ET / OU TRANSPORT PAR
TEMPS FROID (GEL)

SCHÉMA D'ASSEMBLAGE

SCHÉMAS ET LISTES DES
COMPOSANTES

VUES EXPLOSÉES DES COMPOSANTES

LIST OF CONTENTS

INTRODUCTION

WARRANTY

WINTERIZATION AND / OR
COLD TEMPERATURE
TRANSPORTATION (FREEZING)

DRAWING ASSEMBLY

DRAWINGS AND
COMPONENTS LISTS

PARTS BREAK DOWN

INTRODUCTION

Merci d'avoir choisi un produit de qualité de **MS Gregson Inc.** Nous sommes heureux de vous compter parmi les propriétaires satisfaits de nos pulvérisateurs.

Plusieurs années de recherche ont mené au développement de cette série de modèles et seulement des pièces et matériaux de qualité sont utilisés. Chaque machine est soigneusement testée et inspectée avant de quitter notre usine pour vous assurer des années de performance.

Pour une performance continue, souvenez-vous que cette machine représente un important investissement de votre part mais, bien entretenue, elle vous retournera votre investissement plus d'une fois. Comme pour tous les équipements mécaniques, votre machine requiert une installation adéquate, une bonne opération et l'entretien spécifié dans ce manuel.

Veuillez lire ce manuel très attentivement et au complet avant d'installer et d'opérer votre machine. Examinez votre machine, ses accessoires et la caisse d'emballage pour noter tout dommage ou pièce manquante. Rapportez rapidement au transporteur toute réclamation pour perte ou dommage.

INTRODUCTION

Thank you for having selected a quality **MS Gregson Inc.** product. We are pleased to have you included among the many satisfied owners of our sprayers.

Years of research have brought into the development of these fine products and only top quality components and materials are used throughout. Every machine is carefully tested and inspected before leaving our plant to ensure you years of performance.

For a continuous performance, remember that this washer is a substantial investment for you, but properly cared and maintained it will return this investment many times. As with all mechanical equipment, your washer requires proper installation, proper operation and maintenance as specified in this manual.

Please read carefully the entire manual before installing and operating this machine. Examine machine, accessories and crate carefully for shipping damage or missing parts. Report promptly any shortages or damage claims to freight carrier.

POLITIQUE DE GARANTIE MS GREGSON

GARANTIE LIMITÉE

Les machines fabriqués par **MS Gregson Inc.** sont garantis, à l'acheteur initial au détail, comme étant exempts de vices de matériaux ou de fabrication pour les délais spécifiés ci-dessous. Les conditions d'utilisation normale conformes aux instructions décrites dans le manuel de l'utilisateur s'appliquent. Cette garantie limitée est sujette aux exclusions ci-dessous énumérées. Elle est calculée à partir de la date de livraison à l'acheteur initial et s'applique aux composantes originales seulement. Les pièces remplacées sous cette garantie jouissent du délai restant de la garantie pour les composantes correspondantes.

GARANTIE DE 1 AN SUR LES PIÈCES, 1 AN SUR LA MAIN-D'OEUVRE

Les composantes, excluant les accessoires mentionnés cidessous et les items d'entretien courant mentionnés ci-dessous, sont couvertes par une garantie de 1 an sur les pièces et la main-d'oeuvre.

GARANTIE OFFERTE PAR D'AUTRES MANUFACTURIERS

Les moteurs électriques ou à essence, batteries, pneus, jantes, contrôleur de taux ou autres items dont le fabricant offre directement une garantie, sont réparés dans un centre de service autorisé du fabricant correspondant. **MS Gregson Inc.** ne peut offrir de garantie sur ces items.

EXCLUSIONS DE LA GARANTIE

- Ajustements de routine et articles d'entretien courant tels que lubrifiants, courroies, boyaux, joints toriques, tamis de filtre, fusibles, systèmes d'étanchéité de pistolets.
- Réparations requises suite à une collision, un accident, un choc, un abus, des modifications apportées à l'équipement sans autorisation, une installation inadéquate, un mauvais entretien, une utilisation contraire aux directives fournies dans ce manuel ou au bon sens commun.
- Réparations requises suite au gel ou à l'exposition à des produits corrosifs.
- Réparation requises suite à des fluctuations de tension électrique d'alimentation.
- Réparations requises suite à une alimentation insuffisante en eau ou à une eau de mauvaise qualité.
- Dommages aux cultures dû à un mauvais calibrage ou usage de l'équipement.
- Dommages aux cultures ou déversement dû à un bris de composante et/ou un accident.
- Frais résultant de l'arrêt de l'unité durant une réparation ou pour toute autre raison.
- Frais de transport et/ou de déplacement.

EXÉCUTION DE RÉPARATION PENDANT LA PÉRIODE DE GARANTIE

Pour obtenir le service de garantie sur des pièces garanties par **MS Gregson Inc.** pendant la

MS GREGSON WARRANTY POLICY

LIMITED WARRANTY

The machines manufactured by **MS Gregson Inc.** are warranted, to the original purchaser, to be free from defects in materials and workmanship for the periods specified below. Normal use conditions, according to the instructions in the operator's manual, apply. This limited warranty is subject to the exclusions listed below, is calculated from the date of delivery to the original purchaser, and applies to the original components only. Parts replaced under this warranty will assume the remainder of the corresponding part's warranty period.

1 YEAR PARTS, 1 YEAR LABOUR WARRANTY

The components, excluding accessories listed below and normal wear items listed below, are warranted for 1 year on parts and labour.

WARRANTY PROVIDED BY OTHER MANUFACTURERS

Motors, engines, batteries, wheels, rims, rate controller or other items which are warranted by their respective manufacturers, are serviced through these manufacturer's local authorized service centres. **MS Gregson Inc.** cannot provide warranty on these items.

EXCLUSIONS OF WARRANTY

- Routine adjustments and normal maintenance items such as lubricants, belts, hoses, O-rings, filter screens, fuses, gun seal kits.
- Repairs required as a result of collision, accident, bumping, misuse, modifications made to the equipment without authorization, incorrect installation, lack of required maintenance, use contrary to the instructions included in this manual or to the common sense.
- Repairs required as a result of freezing or exposition to corrosive products.
- Repairs required as a result of voltage fluctuations of the electric supply.
- Repairs required as a result of insufficient water supply or poor quality water.
- Damage to crop due to wrong calibration or incorrect use of the equipment.
- Damage to crop or spill due to components failure and/or accident.
- Additional charge resulting from paralyzation and repair of the equipment.
- Transportation and/or travelling.

EXECUTION OF REPAIRS WITHIN THE WARRANTY PERIOD

In order to obtain warranty service on items warranted by **MS Gregson Inc.** within the warranty

période de garantie, vous devez montrer à votre concessionnaire une preuve d'achat de votre équipement. Si l'équipement est installé de façon permanente, les réparations seront effectuées sur place par le concessionnaire. Pour obtenir le service de garantie sur les composantes garanties par d'autres fabricants, votre concessionnaire peut vous aider à obtenir ces services dans un centre local de service autorisé.

Le concessionnaire a la responsabilité d'effectuer les réparations couvertes pendant la durée de la garantie.

Ces réparations se feront à l'atelier du concessionnaire pour les équipements mobiles ou chez le client au choix du concessionnaire ; le client au détail a la responsabilité d'apporter son équipement chez son concessionnaire.

Les pièces changées sous garantie deviennent la propriété de **MS Gregson Inc.**

LIMITE DE LA RESPONSABILITÉ

La responsabilité de **MS Gregson Inc.** pour les dommages particuliers, accidentels ou consécutifs est expressément déniée. En aucun temps, la responsabilité de **MS Gregson Inc.** ne peut excéder le prix d'achat du produit en question. LA PRÉSENTE GARANTIE TIENT LIEU DE TOUTE AUTRE GARANTIE, EXPLICITE OU IMPLICITE, Y COMPRIS TOUTE GARANTIE IMPLICITE D'ADAPTATION POUR UNE UTILISATION PARTICULIÈRE. **MS Gregson Inc.** n'autorise aucune autre partie, incluant les concessionnaires **MS Gregson** autorisés, à faire toute représentation ou promesse au nom de **MS Gregson Inc.** ou à modifier les termes, conditions ou limitations d'aucune façon. Il est de la responsabilité de l'acheteur de s'assurer que l'installation et l'utilisation des produits MS GREGSON respectent les codes locaux. Bien que **MS Gregson Inc.** tente de s'assurer que ses produits rencontrent les codes nationaux, elle ne peut être responsable de la façon dont le client choisit d'installer ou d'utiliser le produit.

REMISAGE

Rincer et drainer le réservoir, la rampe, les tubes, les boyaux ainsi que la pompe.

Faire fonctionner l'unité en aspirant une solution d'antigel (prestone) de façon à ce qu'elle en soit complètement rempli (boyaux et pompe). **NOTE : ne pas utiliser de liquide lave-vitre.**

Enlever la base et le tamis du filtre.

Enlever le cadran à pression et remiser au chaud (ne supporte pas le gel).

S'assurer qu'il ne reste plus de liquide dans les filtres. Avant de mettre à nouveau l'unité en marche, bien vider et laver le réservoir, les boyaux et la pompe.

period, you must show to your dealer a proof of purchase. If the equipment is permanently installed, repairs will be carried out on the spot by the dealer. For warranty service on components warranted by other manufacturers, your authorized **MS Gregson** dealer can help you obtain warranty service through these manufacturers' local authorized service centres.

The dealer has the responsibility to carry out repairs within the warranty period.

Repairs will be done at the dealer's repair-shop for mobile equipments (or at your site upon dealer choice); the purchaser has the responsibility to bring his equipment to his dealer's repair-shop.

The parts changed under warranty become the property of **MS Gregson Inc.**

LIMITATION OF LIABILITY

MS Gregson Inc. liability for special, incidental, or consequential damages is expressly disclaimed. In no event shall **MS Gregson Inc.** liability exceed the purchase price of the product in question. THE WARRANTY CONTAINED HEREIN IS IN LIEU OF ALL OTHER WARRANTIES, EXPRESSED OR IMPLIED, INCLUDING ANY IMPLIED WARRANTY OF FITNESS FOR A PARTICULAR PURPOSE. **MS Gregson Inc.** does not authorize any other party, including authorized **MS Gregson** dealers, to make any representation or promise on behalf of **MS Gregson Inc.** or to modify the terms, conditions, or limitations in any way. It is the buyer's responsibility to ensure that the installation and use of **MS Gregson** products conforms to local codes. While **MS Gregson Inc.** attempts to assure that its products meet national codes, it cannot be responsible for how the customer chooses to use or install the product.

STORAGE

Rinse and drain the tank, the boom, the tubes, the hoses and the pump.

Operate the system by sucking an anti-freeze (prestone) solution through the hoses and the pump. **NOTE: Do not use windshield washer fluid.**

Take-off base and filter screen.

Take-off pressure gage and put it in a warm place (it does not support freezing).

Make sure that no liquid is left into the filters. Before starting the unit again, be sure that the tank, hoses and pump are well emptied and washed.

CALIBRATION

Réservoir Raven, 380 litres (100 gal US), No **RA-10929**
 Raven tank, 100 US gal (380 liters), No **RA-10929**

| LITRES LITERS | GAL US US GAL | HAUTEUR DU SOL HEIGHT FROM GROUND |
|------------------------|------------------|--------------------------------------|
| 30 | | 2-15/16" |
| | 10 | 3-7/16" |
| 40 | | 3-5/8 |
| 50 | | 4-3/16" |
| 75 | 20 | 5-3/4" |
| 100 | | 7-1/4" |
| | 30 | 7-15/16" |
| 125 | | 8-1/2" |
| 150 | 40 | 10-1/16" |
| 175 | | 11-1/2" |
| | 50 | 12-1/4" |
| CENTRE / CENTER | | 12-1/2" |
| 200 | | 12-7/8" |
| 225 | 60 | 14-3/8" |
| 250 | | 15-3/16" |
| | 70 | 16-1/2" |
| 275 | | 17-1/4" |
| 300 | 80 | 18-5/8" |
| 325 | | 20-1/8" |
| | 90 | 21" |
| 350 | | 21-9/16" |
| 375 | 100 | 23-5/16" |
| 400 | | 25-11/16" |

Méthode de calibration pour fertilisation de gazon

Une bonne méthode de calibration pour la fertilisation des pelouses doit tenir compte de ces 3 facteurs :

- 1- Superficie couverte en 60 secondes.
- 2- Vitesse d'avancement.
- 3- Débit du pistolet pendant 60 secondes.

L'utilisateur doit traiter une superficie fixe durant 60 secondes, habituellement 100 m² or 1000 pi².

Avec le fusil Lesco ou TeeJet, on couvre habituellement 8 pi de largeur ou 2.44 mètres. Il faut donc parcourir 41 mètres (134') en 60 secondes pour couvrir 100 m²/min ou 125 pi (38 m) en 60 secondes pour couvrir 1000 pi²/min.

Avec le fusil à gazon MS, on couvre habituellement 6 pi de largeur ou 1.83 mètres. Il faut donc parcourir 54.6 mètres (179') en 60 secondes pour couvrir 100m²/min. ou 167 pi (51 m) en 60 secondes pour couvrir 1000 pi²/min.

Débit du pistolet pendant 60 secondes :

Ajuster votre pression à la pompe afin d'avoir le débit désiré à la buse. Vous recueillez le produit de la buse dans un récipient calibré, pendant 60 secondes d'écoulement. (ex : 12L/min.)

Lawn spraying calibration method

A good calibration method for lawn spraying must keep track of these 3 facts :

- 1- Area covered during 60 seconds
- 2- Walking speed
- 3- Gun rate during 60 seconds

The operator must spray a fixed area during 60 seconds, usually 100 m² or 1000 ft².

With the Lesco or TeeJet gun, you usually spray a swath of 8 ft or 2.44 m. The distance is 41 meters (134') in 60 seconds to cover 100 m²/min. or 125 ft (38 m) in 60 seconds to cover 1000 ft² / min.

With the MS lawn gun, you usually spray a swath of 6 ft or 1.83 m. The distance is 54.6 meters (179') in 60 seconds to cover 100 m²/min. or 167 ft (51 m) in 60 seconds to cover 1000 ft² / min.

Gun rate during 60 seconds:

Adjust your pump pressure to get your desired rate at the gun. Collect the liquid from the nozzle during 60 seconds into a calibration jar. (ex : 4 GPM)

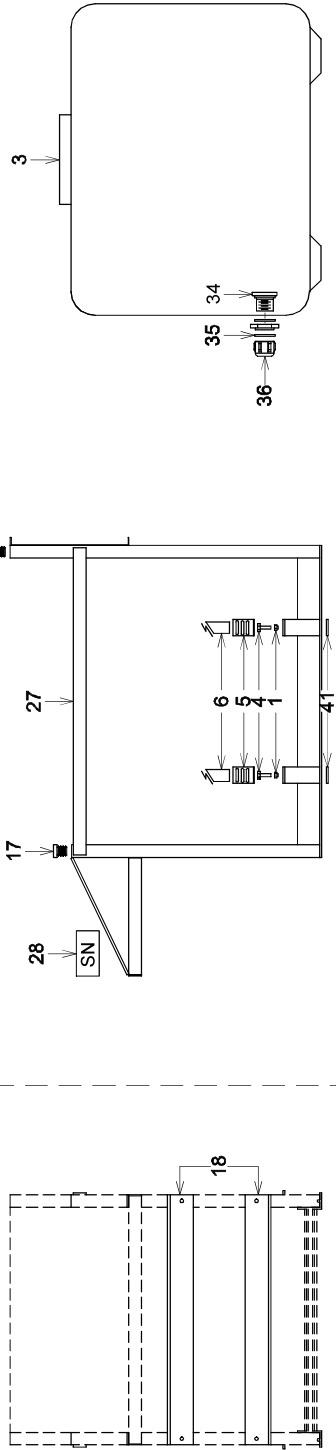
| Chartes de buses / gazon | Lawn nozzles chart |
|---------------------------------------|-------------------------------|
| Buse - Nozzles | Débit - Rate |
| MS, brass, # LE-006328 | |
| Teejet, grise – gray, # JB-2567015NY | 5.6-13L/min. == 1.5 – 3.4 GPM |
| Teejet, noire – black, # JB-2567030NY | 7.5-18L/min. == 2 – 4.7 GPM |
| Teejet, rouge – red, # JB-2567040NY | 9 – 21L/min. == 2.4 – 5.5 GPM |
| Lesco, jaune – yellow, # LE-009510 | 5.6-13L/min. == 1.5 – 3.4 GPM |
| Lesco, verte – green, # LE-007668 | 7.5-18L/min. == 2 – 4.7 GPM |
| Lesco, blanche – white, # LE-007655 | 9 – 21L/min. == 2.4 – 5.5 GPM |

Note : GPM = gal (US)/min.

Bâtit et réservoir de 380 l ou 765 l pour pulvérisateur
 Tank and frames for 100 gal or 200 gal sprayer

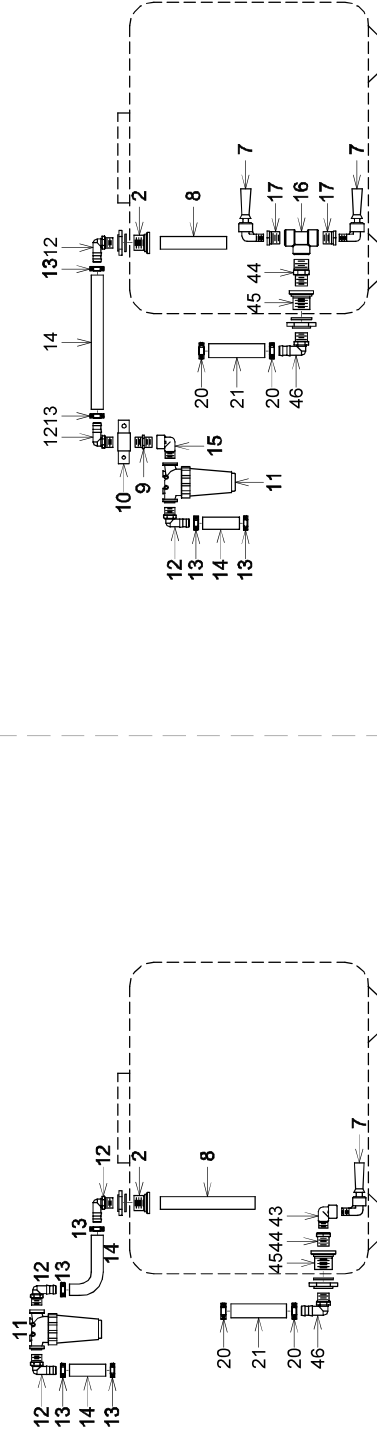
MS-C380SR
 MS-C765SR

RE-C380
 RE-C765



MS-PL1

MS-PL112



IPULVCOMPIAC380

DATE: 1998-11-02 PAR_{By}: R.D.

REV: 2010-03-29 PAR_{By}: D.T. #REV: 1

REC.: RE-C380 RE-C765

MS-PL1 MS-PL112

MS-C380SR MS-C765SR APP:

Desc. Française **Bâti et réservoir pour pulvérisateur C765**
 English Desc. **Tank and frame for C765 commercial sprayer**

| Réf. | Quantité | Produit | Description française | English Description |
|------|----------|------------|---|---|
| 1 | 4.00 | BT-LN12 | Écrou freiné nylon 1/2 unc | Locknut nylon 1/2 unc |
| 3 | 1.00 | NO-42837 | Rés. rect. 765 l, 200gal., 37"x37"x48", poly, couvert 16" | Rect. tank 765 l, 200gal., 37"x37"x48", poly, 16" lid |
| 4 | 4.00 | BT-124FL | Boulon 1/2 x 4" carr. fileté en longueur | Bolt 1/2 x 4" carr. full thread |
| 5 | 4.00 | MS-AC01 | Attache courroie universel | Universal strap attachment |
| 6 | 16.00 | SN-TS198 | Courroie sécurité noire 1 15/16" larg. | Polyester strap 1 15/16" width |
| 17 | 4.00 | AU-SQ11212 | Bouchon 1 1/2"-12, carré en plastique | Square cap plug 1 1/2"-12 |
| 27 | 1.00 | MS-B765P2 | Bâti pulvérisateur C765 | C765 sprayer frame |
| 28 | 1.00 | AU-PNS3-G | Plaque numéro de série MS Gregson, autocollante | MS Gregson serial plate, sticker |
| 34 | 1.00 | MP-2200401 | Adapt. droit 1" mnpt céd.40 ny | Straight adapt. 1" mnpt ced.40 ny |
| 35 | 1.00 | MP-G40002 | Gasket 1/2 | 1/2" gasket |
| 36 | 1.00 | MP-210040 | Capuchon 1" fnpt céd.40 ny | Cap 1" fnpt ced.40 ny |
| 41 | 4.00 | MS-PRMS3X3 | Plaque renfort montage skid | Reinforcement skid mounting plate |

Desc. Française **Plomberie 1" pour pulvérisateurs (380 l ou 765 l)**
English Desc. **1" plumbing for sprayers (100 gal or 200 gal)**

| Réf. | Quantité | Produit | Description française | English Description |
|------|----------|---------------|---|--|
| 2 | 1.00 | RA-5034P | Adapt. de rés. 1"fnpt x 1"fnpt ny | Tank adapt. 1"fnpt x 1"fnpt ny |
| 7 | 1.00 | MP-502010 | Coude agitateur 90 degrés 1/2" | Agitator elbow 90 degrees 1/2" |
| 8 | 1.00 | MS-TSC765 | Tuyau d'aspiration 1" poly. noir | Suction black poly. pipe 1" |
| 11 | 1.00 | MP-3244043 | Filtre 1" en ligne 50 mesh | Filter 1" in line 50 mesh |
| 12 | 3.00 | JB-EL1010NY | Adapt. coudé 1"mnpt x 1"hb céd.80 ny | Elbow adapt. 1"mnpt x 1"hb ced.80 ny |
| 13 | 4.00 | DA-SHAS16 | Collier de serrage en acier inox. 11/16" x 1 1/2" | Stainless collar 11/16" x 1 1/2" |
| 14 | 5.00 | LV-1PVC | Boyau vert, 1", 85 lb/po2, PVC style"j" | Green hose style "j", 1", pvc |
| 20 | 2.00 | DA-SHAS6 | Collier de serrage en acier inox. 3/8" x 7/8" | Stainless collar 3/8" x 7/8" |
| 21 | 5.00 | LV-122J | Boyau jaune, 1/2" 600 lb/po2, PVC 2 pl. int + ext | Yellow hose 1/2, 2 ply int +ext |
| 43 | 1.00 | JB-SE12NY | Adapt. coudé 1/2"mnpt x 1/2"fnpt céd.80 ny | Elbow adapt. 1/2"mnpt x 1/2"fnpt ced.80 ny |
| 44 | 1.00 | JB-RB3412NY | Réduit 3/4"mnpt x 1/2"fnpt céd.80 ny | Reducer 3/4"mnpt x 1/2"fnpt ced.80 ny |
| 45 | 1.00 | RA-5032P | Adapt. de rés. 3/4"fnpt x 3/4"fnpt ny | Tank adapt. 3/4"fnpt x 3/4"fnpt ny |
| 46 | 1.00 | JB-EL3412NY40 | Adapt. coudé 3/4"mnpt x 1/2"hb céd.40 ny | Elbow adapt. 3/4"mnpt x 1/2"hb ced.40 ny |



PULVÉRISATEUR MS
 Div. de RAD Technologies Inc.
 4300 rue Vachon, Drummondville QC J2B 6V4, Canada
 Tél.: 819-474-1910 Fax: 819-474-5317 sales@msspray.com

BOM

MS-PL112

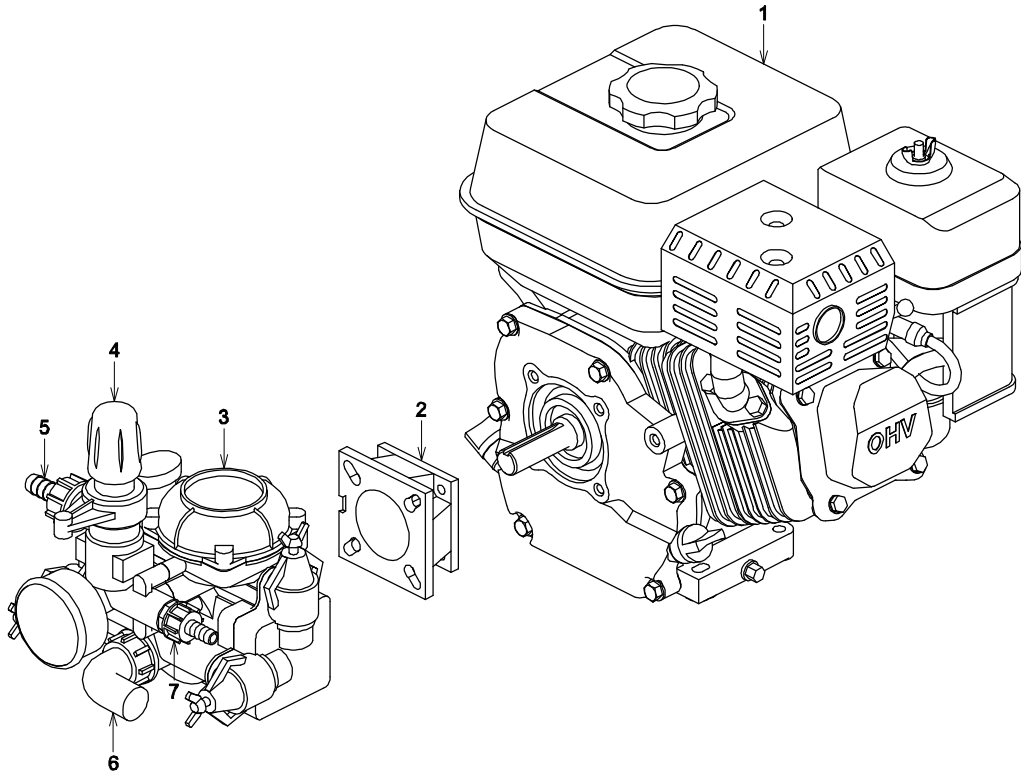
REVISION

0

Desc. Française **Plomberie 1 1/2" pour pulvérisateurs C380-C765**
 English Desc. **1 1/2" plumbing for C380-C765 sprayers**

| Réf. | Quantité | Produit | Description française | English Description |
|------|----------|----------------|--|---|
| 2 | 1.00 | RA-5039P | Adapt. de rés. 1 1/2"fnpt x 1 1/2"fnpt ny | Tank adapt. 1 1/2"fnpt x 1 1/2"fnpt ny |
| 7 | 2.00 | MP-502010 | Coude agitateur 90 degrés 1/2" | Agitator elbow 90 degrees 1/2" |
| 8 | 3.00 | DA-TU112PVC80 | Tuyau 1 1/2" pvc céd. 80 | Pipe 1 1/2" pvc sch80 |
| 9 | 1.00 | DA-CN112 | Mamelon court 1 1/2"mnpt x 1 1/2"mnpt céd.40 galvanisé | Close nipple 1 1/2"mnpt x 1 1/2"mnpt ced.40 galv. |
| 10 | 1.00 | MS-SF112 | Sup. 1 1/2" fnpt | 1 1/2" fnpt support |
| 11 | 1.00 | JB-124A112NY50 | Filtre 1 1/2"50 mailles, polypr | Polypro 1 1/2" filter, 50 mesh |
| 12 | 3.00 | JB-EL112NY | Adapt. coudé 1 1/2"mnpt x 1 1/2"hb céd.80 ny | Elbow adapt. 1 1/2"mnpt x 1 1/2"hb ced.80 ny |
| 13 | 4.00 | DA-HS24 | Collet 1 1/16" x 2" | Collar 1 1/16" x 2" |
| 14 | 5.00 | LV-112PVC | Boyau vert renf., 1 1/2", 70 lb/po2, succion | Suction hose 1 1/2", green |
| 15 | 1.00 | DA-EL112MFG90 | Coude 1 1/2"mnpt x 1 1/2"fnpt céd.40 galvanisé | Elbow adapt. 1 1/2"mnpt x 1 1/2"fnpt ced.40 galv. |
| 16 | 1.00 | JB-TT100NY | Adapt. en t 1"fnpt x 1"fnpt x 1"fnpt céd.80 ny. | T adapt. 1"fnpt x 1"fnpt x 1"fnpt ced.80 ny. |
| 17 | 2.00 | JB-RB10012NY | Réduit 1"mnpt x 1/2"fnpt céd.80 ny | Reducer 1"mnpt x 1/2"fnpt ced.80 ny |
| 20 | 2.00 | DA-SHAS12 | Collier de serrage en acier inox. 9/16" x 1 1/4" | Stainless steel collar 9/16" x 1 1/4" |
| 21 | 4.00 | LV-342N | Boyau noir, 3/4", 150 lb/po2, caoutchouc 1 pli | Black hose 3/4", 1 ply, 150 psi |
| 44 | 1.00 | BJ-RN100075 | Mamelon réducteur 1"mnpt x 3/4"mnpt céd.80 ny | Nipple red. 1"mnpt x 3/4"mnpt ced.80 ny |
| 45 | 1.00 | RA-5032P | Adapt. de rés. 3/4"fnpt x 3/4"fnpt ny | Tank adapt. 3/4"fnpt x 3/4"fnpt ny |
| 46 | 1.00 | JB-EL3434NY | Adapt. coudé 3/4"mnpt x 3/4"hb céd.80 ny | Elbow adapt. 3/4"mnpt x 3/4"hb ced.80 ny |

Unité de pompage Pumping unit



Note:
 -Pompe MC25, ajuster le moteur à 2800 tr/min
 -MC25 pump , adjust the engine at 2800 rpm

| | | |
|--|---------------|---------|
| PulvCOMPcUMP_M01 | | |
| DATE: 2004-10-13 | PAR/ BY: E.L. | |
| REV: 2010-03-29 | PAR/ BY: D.T. | #REV: 0 |
| # REC.: MS-MC25H4(GC,GX) / MS-BP105HGX | | |
| MS-APS41(H4,H55,H5GC) / MS-D30(H4,H55) / MS-MC25H4TE | | |
| MS-APS(519H,6111H,7111H) | | APP: |

BOM**MS-MC25H4GC****REVISION****0**Desc. Française **Unité pompage MC25, Honda GC160, 6 gpm, 350 lb/po²**English Desc. **MC25 pumping unit, Honda GC160, 6 gpm, 350 psi**

| Réf. | Quantité | Produit | Description française | English Description |
|------|----------|-------------|--|--|
| 1 | 1.00 | HO-GC160QHC | Moteur 5hp, arbre horizontal | Honda engine 5hp, hor. shaft |
| 2 | 1.00 | CO-5011/201 | Boîte d'engrenage pour pompe MC254T, 4.33 à 1 | Gear box for MC254T pump, 4.33 to 1 |
| 3 | 1.00 | CO-MC254T | Pompe membrane MC25, 6 gpm, 350 lbs/po ² , régl. pr | MC25 diaphragm pump, 6 gpm, 350 psi, regulator, for gear-box |



PULVÉRISATEUR MS
Div. de RAD Technologies Inc.
4300 rue Vachon, Drummondville QC J2B 6V4, Canada
Tél.: 819-474-1910 Fax: 819-474-5317 sales@msspray.com

BOM

MS-APS7113H

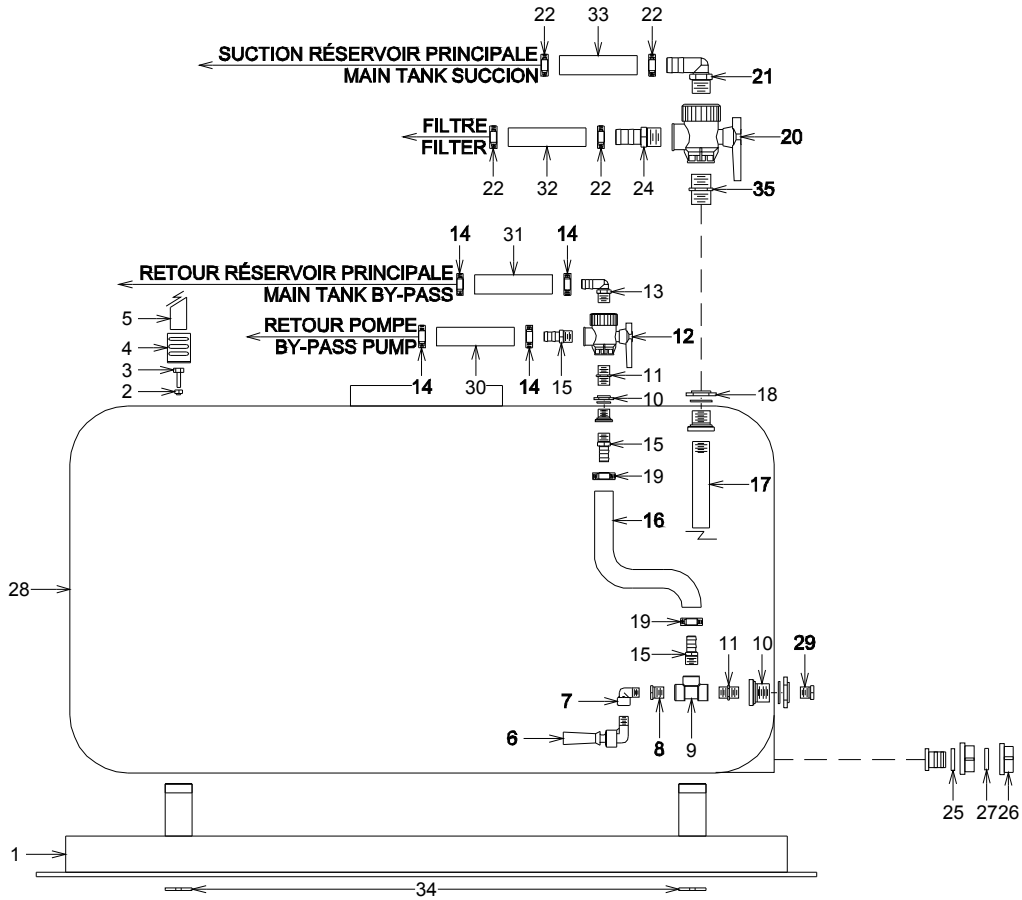
REVISION


0

Desc. Française **Unité APS71-13hp honda, 20gpm, 580 lb/po2**
English Desc. **APS71-13hp honda pumping unit, 20 gpm, 580 psi**

| Réf. | Quantité | Produit | Description française | English Description |
|------|----------|--------------|--------------------------------------|--|
| 1 | 1.00 | HO-GX390K1QA | Moteur Honda 13 hp oil alert*** | Motor 13 hp Honda oil alert*** |
| 2 | 1.00 | CO-5005/221 | Réducteur 6.44 à 1 / pompes APS51-71 | 6.44 to 1 gear reducer / APS51-71pumps |
| 3 | 1.00 | CO-APS71 | Pompe à membrane 20 gpm, 580 lbs/po2 | Diaphragm pump, 20 gpm, 580 psi |
| 4 | 1.00 | CO-1204/189 | Contrôle 3 sorties / APS51-71 | 3 outlets control / APS51-71 |

2 ième RÉSERVOIR, 190L, 380L, 575L OU 765L
 2 nd TANK, 50, 100, 150, 200 GAL.



| | | | |
|--|---------------|---------------------|------|
|  PULVÉRISATEUR MS Inc. MS SPRAYER Inc. | | | |
| | | \PULVCOM\PC\I7652EC | |
| DATE: 1998-01-02 | PAR/ BY: R.D. | | |
| REV: 2008-02-14 | PAR/ BY: D.T. | #REV: 3 | |
| # REC.: RE-P1902EC | | | |
| RE-P3802EC | | | |
| RE-P5752EC RE-P7652EC | | | APP: |

Desc. Française Deuxième réservoir de 190 l et plomberie 1"
English Desc. Second 50 gal. tank w. 1" plumbing

| Réf. | Quantité | Produit | Description française | English Description |
|------|----------|----------------|---|---|
| 1 | 1.00 | MS-B1902 | Bâti 190l carré | Frame/190 li tank part |
| 2 | 4.00 | BT-LN12 | Écrou freiné nylon 1/2 unc | Locknut nylon 1/2 unc |
| 3 | 4.00 | BT-124FL | Boulon 1/2 x 4" carr. fileté en longueur | Bolt 1/2 x 4" carr. full thread |
| 4 | 4.00 | MS-AC01 | Attache courroie universel | Universal strap attachment |
| 5 | 10.00 | SN-TS198 | Courroie sécurité noire 1 15/16" larg. | Polyester strap 1 15/16" width |
| 6 | 1.00 | MP-502010 | Coude agitateur 90 degrés 1/2" | Agitator elbow 90 degrees 1/2" |
| 7 | 1.00 | JB-SE12NY | Adapt. coudé 1/2" mnpt x 1/2" fnpt céd.80 ny | Elbow adapt. 1/2" mnpt x 1/2" fnpt ced.80 ny |
| 8 | 1.00 | JB-RB3412NY | Réduit 3/4" mnpt x 1/2" fnpt céd.80 ny | Reducer 3/4" mnpt x 1/2" fnpt ced.80 ny |
| 9 | 1.00 | JB-TT34NY40 | Adapt. en t 3/4" fnpt x 3/4" fnpt x 3/4" fnpt céd.40 ny | T adapt. 3/4" fnpt x 3/4" fnpt x 3/4" fnpt ced.40 ny. |
| 10 | 2.00 | RA-5032P | Adapt. de rés. 3/4" fnpt x 3/4" fnpt ny | Tank adapt. 3/4" fnpt x 3/4" fnpt ny |
| 11 | 2.00 | JB-M3400NY40 | Mamelon court 3/4" mnpt x 3/4" mnpt céd.40 ny | Close nipple 3/4" mnpt x 3/4" mnpt ced.40 ny |
| 12 | 1.00 | JB-PBVH34343 | Valve à bille 3v 3/4" fnpt ny, joint EPDM | Ball valve 3v 3/4" fnpt ny, EPDM seal |
| 13 | 1.00 | JB-EL3412NY40 | Adapt. coudé 3/4" mnpt x 1/2" hb céd.40 ny | Elbow adapt. 3/4" mnpt x 1/2" hb ced.40 ny |
| 14 | 4.00 | DA-HS6 | Collet 3/8" x 7/8" | Collar 3/8" x 7/8" |
| 15 | 3.00 | JB-IMB0604NY40 | Adapt. droit 3/4" mnpt x 1/2" hb céd.40 ny. | Straight adapt. 3/4" mnpt x 1/2" hb ced.40 ny. |
| 16 | 24.00 | LV-122J | Boyau jaune, 1/2" 600 lb/po2, PVC 2 pl. int + ext | Yellow hose 1/2, 2 ply int +ext |
| 17 | 3.00 | AU-TU1P | Tuyau 1" poly. noir céd.80 au pied | Black polypro.tube 1"sch.80 by feet |
| 18 | 1.00 | RA-5034P | Adapt. de rés. 1" fnpt x 1" fnpt ny | Tank adapt. 1" fnpt x 1" fnpt ny |
| 19 | 2.00 | DA-SHAS6 | Collier de serrage en acier inox. 3/8" x 7/8" | Stainless collar 3/8" x 7/8" |
| 20 | 1.00 | JB-PBVH10103 | Valve à bille 3v 1" fnpt ny, joint EPDM | Ball valve 3v 1" fnpt ny, EPDM seal |
| 21 | 1.00 | JB-EL1010NY | Adapt. coudé 1" mnpt x 1" hb céd.80 ny | Elbow adapt. 1" mnpt x 1" hb ced.80 ny |
| 22 | 4.00 | DA-SHAS16 | Collier de serrage en acier inox. 11/16" x 1 1/2" | Stainless collar 11/16" x 1 1/2" |
| 24 | 1.00 | JB-IMB0808NY | Adapt. droit 1" mnpt x 1" hb céd.80 ny | Straight adapt. 1" mnpt x 1" hb ced.80 ny |
| 25 | 1.00 | MP-2200401 | Adapt. droit 1" mnpt céd.40 ny | Straight adapt. 1" mnpt ced.40 ny |
| 26 | 1.00 | MP-210040 | Capuchon 1" fnpt céd.40 ny | Cap 1" fnpt ced.40 ny |
| 27 | 1.00 | MP-G40002 | Gasket 1/2 | 1/2" gasket |
| 28 | 1.00 | NO-42834 | Rés. rect. 190 l, 50gal., 19"x23"x38", poly, blanc | Rect. tank 190 l, 50gal., 19"x23"x38", poly |
| 29 | 1.00 | JB-VMM0006NY40 | Bouchon 3/4" mnpt céd.40 ny | Plug 3/4" mnpt ced.40 ny |
| 30 | 10.00 | LV-122J | Boyau jaune, 1/2" 600 lb/po2, PVC 2 pl. int + ext | Yellow hose 1/2, 2 ply int +ext |
| 31 | 10.00 | LV-122J | Boyau jaune, 1/2" 600 lb/po2, PVC 2 pl. int + ext | Yellow hose 1/2, 2 ply int +ext |
| 32 | 10.00 | LV-1PVC | Boyau vert, 1", 85 lb/po2, PVC style"j" | Green hose style "j", 1", pvc |
| 33 | 10.00 | LV-1PVC | Boyau vert, 1", 85 lb/po2, PVC style"j" | Green hose style "j", 1", pvc |
| 34 | 4.00 | MS-PRMS3X3 | Plaque renfort montage skid | Reinforcement skid mounting plate |
| 35 | 1.00 | JB-M1000NY | Mamelon court 1" mnpt x 1" mnpt céd.80 ny | Close nipple 1" mnpt x 1" mnpt ced.80 ny |

Desc. Française Deuxième réservoir de 380 l et plomberie 1"
English Desc. Second 100 gal tank w. 1" plumbing

| Réf. | Quantité | Produit | Description française | English Description |
|------|----------|----------------|---|---|
| 1 | 1.00 | MS-B3802 | Bâti 380 L carre | 380 L. square frame |
| 2 | 4.00 | BT-LN12 | Écrou freiné nylon 1/2 unc | Locknut nylon 1/2 unc |
| 3 | 4.00 | BT-124FL | Boulon 1/2 x 4" carr. fileté en longueur | Bolt 1/2 x 4" carr. full thread |
| 4 | 4.00 | MS-AC01 | Attache courroie universel | Universal strap attachment |
| 5 | 20.00 | SN-TS198 | Courroie sécurité noire 1 15/16" larg. | Polyester strap 1 15/16" width |
| 6 | 1.00 | MP-502010 | Coude agitateur 90 degrés 1/2" | Agitator elbow 90 degrees 1/2" |
| 7 | 1.00 | JB-SE12NY | Adapt. coudé 1/2" mnpt x 1/2" fnpt céd.80 ny | Elbow adapt. 1/2" mnpt x 1/2" fnpt ced.80 ny |
| 8 | 1.00 | JB-RB3412NY | Réduit 3/4" mnpt x 1/2" fnpt céd.80 ny | Reducer 3/4" mnpt x 1/2" fnpt ced.80 ny |
| 9 | 1.00 | JB-TT34NY40 | Adapt. en t 3/4" fnpt x 3/4" fnpt x 3/4" fnpt céd.40 ny | T adapt. 3/4" fnpt x 3/4" fnpt x 3/4" fnpt ced.40 ny. |
| 10 | 2.00 | RA-5032P | Adapt. de rés. 3/4" fnpt x 3/4" fnpt ny | Tank adapt. 3/4" fnpt x 3/4" fnpt ny |
| 11 | 2.00 | JB-M3400NY40 | Mamelon court 3/4" mnpt x 3/4" mnpt céd.40 ny | Close nipple 3/4" mnpt x 3/4" mnpt ced.40 ny |
| 12 | 1.00 | JB-PBVH34343 | Valve à bille 3v 3/4" fnpt ny, joint EPDM | Ball valve 3v 3/4" fnpt ny, EPDM seal |
| 13 | 1.00 | JB-EL3412NY40 | Adapt. coudé 3/4" mnpt x 1/2" hb céd.40 ny | Elbow adapt. 3/4" mnpt x 1/2" hb ced.40 ny |
| 14 | 4.00 | DA-HS6 | Collet 3/8" x 7/8" | Collar 3/8" x 7/8" |
| 15 | 3.00 | JB-IMB0604NY40 | Adapt. droit 3/4" mnpt x 1/2" hb céd.40 ny. | Straight adapt. 3/4" mnpt x 1/2" hb ced.40 ny. |
| 16 | 24.00 | LV-122J | Boyau jaune, 1/2" 600 lb/po2, PVC 2 pl. int + ext | Yellow hose 1/2, 2 ply int +ext |
| 17 | 26.25 | AU-TU1P | Tuyau 1" poly. noir céd.80 au pied | Black polypro.tube 1"sch.80 by feet |
| 18 | 1.00 | RA-5034P | Adapt. de rés. 1" fnpt x 1" fnpt ny | Tank adapt. 1" fnpt x 1" fnpt ny |
| 19 | 2.00 | DA-SHAS6 | Collier de serrage en acier inox. 3/8" x 7/8" | Stainless collar 3/8" x 7/8" |
| 20 | 1.00 | JB-PBVH10103 | Valve à bille 3v 1" fnpt ny, joint EPDM | Ball valve 3v 1" fnpt ny, EPDM seal |
| 21 | 1.00 | JB-EL1010NY | Adapt. coudé 1" mnpt x 1" hb céd.80 ny | Elbow adapt. 1" mnpt x 1" hb ced.80 ny |
| 22 | 4.00 | DA-SHAS16 | Collier de serrage en acier inox. 11/16" x 1 1/2" | Stainless collar 11/16" x 1 1/2" |
| 24 | 1.00 | JB-IMB0808NY | Adapt. droit 1" mnpt x 1" hb céd.80 ny | Straight adapt. 1" mnpt x 1" hb ced.80 ny |
| 25 | 1.00 | MP-2200401 | Adapt. droit 1" mnpt céd.40 ny | Straight adapt. 1" mnpt ced.40 ny |
| 26 | 1.00 | MP-210040 | Capuchon 1" fnpt céd.40 ny | Cap 1" fnpt ced.40 ny |
| 27 | 1.00 | MP-G40002 | Gasket 1/2 | 1/2" gasket |
| 28 | 1.00 | RA-10929 | Rés. rect. 380 l, 100gal., 30"x26"x38", poly | Rect. tank 380 l, 100gal., 30"x26"x38", poly |
| 29 | 1.00 | JB-VMM0006NY40 | Bouchon 3/4" mnpt céd.40 ny | Plug 3/4" mnpt ced.40 ny |
| 30 | 10.00 | LV-122J | Boyau jaune, 1/2" 600 lb/po2, PVC 2 pl. int + ext | Yellow hose 1/2, 2 ply int +ext |
| 31 | 10.00 | LV-122J | Boyau jaune, 1/2" 600 lb/po2, PVC 2 pl. int + ext | Yellow hose 1/2, 2 ply int +ext |
| 32 | 10.00 | LV-1PVC | Boyau vert, 1", 85 lb/po2, PVC style"j" | Green hose style "j", 1", pvc |
| 33 | 10.00 | LV-1PVC | Boyau vert, 1", 85 lb/po2, PVC style"j" | Green hose style "j", 1", pvc |
| 34 | 4.00 | MS-PRMS3X3 | Plaque renfort montage skid | Reinforcement skid mounting plate |
| 35 | 1.00 | JB-M1000NY | Mamelon court 1" mnpt x 1" mnpt céd.80 ny | Close nipple 1" mnpt x 1" mnpt ced.80 ny |

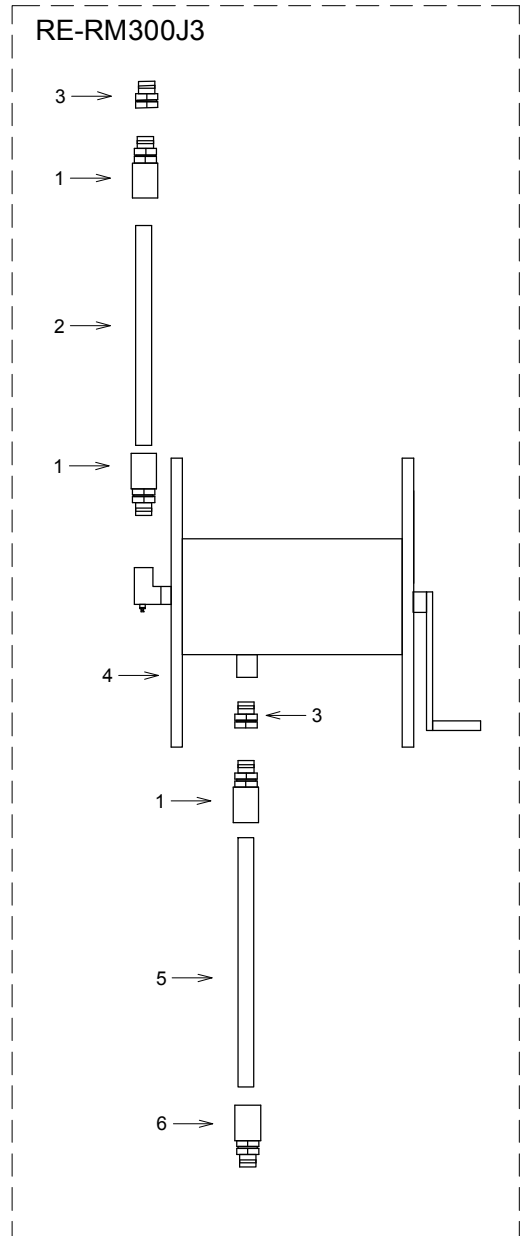
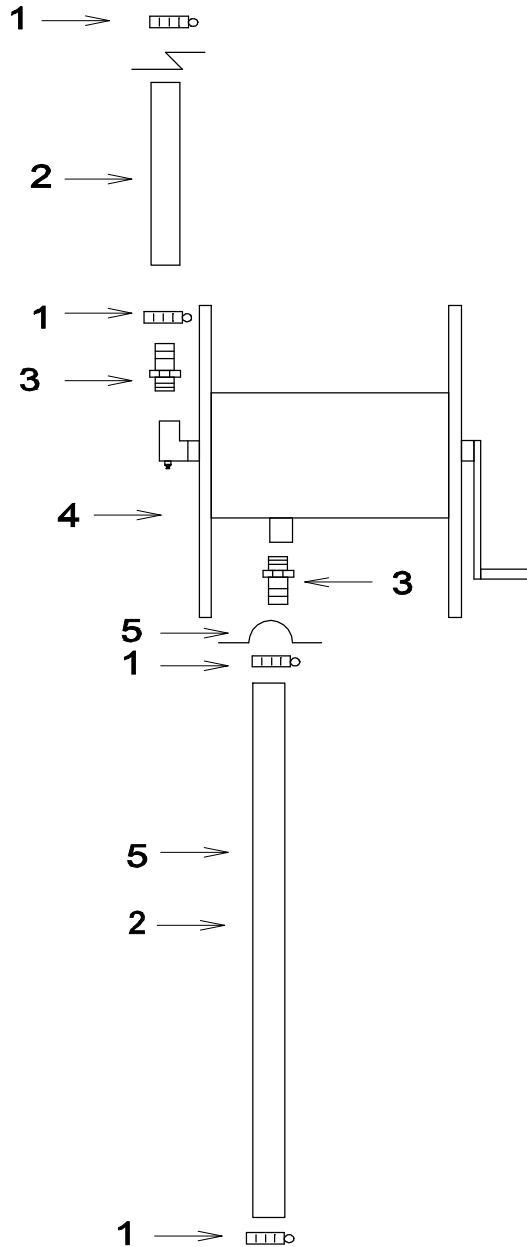
Desc. Française Deuxième réservoir de 575 l et plomberie 1"
English Desc. Second 150 gal tank w. 1" plumbing

| Réf. | Quantité | Produit | Description française | English Description |
|------|----------|------------------|---|---|
| 1 | 1.00 | MS-B7652 | Bâti 765l carré | 765l square frame |
| 2 | 4.00 | BT-LN12 | Écrou freiné nylon 1/2 unc | Locknut nylon 1/2 unc |
| 3 | 4.00 | BT-124FL | Boulon 1/2 x 4" carr. fileté en longueur | Bolt 1/2 x 4" carr. full thread |
| 4 | 4.00 | MS-AC01 | Attache courroie universel | Universal strap attachment |
| 5 | 20.00 | SN-TS198 | Courroie sécurité noire 1 15/16" larg. | Polyester strap 1 15/16" width |
| 6 | 1.00 | MP-502010 | Coude agitateur 90 degrés 1/2" | Agitator elbow 90 degrees 1/2" |
| 7 | 1.00 | JB-SE12NY | Adapt. coudé 1/2" mnpt x 1/2"fnpt céd.80 ny | Elbow adapt. 1/2" mnpt x 1/2"fnpt ced.80 ny |
| 8 | 1.00 | JB-RB3412NY | Réduit 3/4" mnpt x 1/2"fnpt céd.80 ny | Reducer 3/4" mnpt x 1/2"fnpt ced.80 ny |
| 9 | 1.00 | JB-TT 34NY40 | Adapt. ent 3/4"fnpt x 3/4"fnpt x 3/4"fnpt céd.40 ny | T adapt. 3/4"fnpt x 3/4"fnpt x 3/4"fnpt ced.40 ny |
| 10 | 2.00 | RA-5032P | Adapt. de rés. 3/4"fnpt x 3/4"fnpt ny | Tank adapt. 3/4"fnpt x 3/4"fnpt ny |
| 11 | 2.00 | JB-M3400N Y40 | Mamelon court 3/4" mnpt x 3/4" mnpt céd.40 ny | Close nipple 3/4" mnpt x 3/4" mnpt ced.40 ny |
| 12 | 1.00 | JB-PBVH34343 | Valve à bille 3v 3/4"fnpt ny, joint EPDM | Ball valve 3v 3/4"fnpt ny, EPDM seal |
| 13 | 1.00 | JB-EL3412N Y40 | Adapt. coudé 3/4" mnpt x 1/2"hb céd.40 ny | Elbow adapt. 3/4" mnpt x 1/2"hb ced.40 ny |
| 14 | 4.00 | DA-HS6 | Collet 3/8" x 7/8" | Collar 3/8" x 7/8" |
| 15 | 3.00 | JB-IMB0604N Y40 | Adapt. droit 3/4" mnpt x 1/2"hb céd.40 ny | Straight adapt. 3/4" mnpt x 1/2"hb ced.40 ny |
| 16 | 24.00 | LV-122J | Boyaux jaunes, 1/2" 600 lb/po2, PVC 2 pl. int + ext | Yellow hose 1/2, 2 pl y int + ext |
| 17 | 3.00 | AU-TU1P | Tuyau 1" poly noir céd.80 au pied | Black polyprop. tube 1" sch.80 by feet |
| 18 | 1.00 | RA-5034P | Adapt. de rés. 1"fnpt x 1"fnpt ny | Tank adapt. 1"fnpt x 1"fnpt ny |
| 19 | 2.00 | DA-SHAS6 | Collier de serrage en acier inox. 3/8" x 7/8" | Stainless collar 3/8" x 7/8" |
| 20 | 1.00 | JB-PBVH10103 | Valve à bille 3v 1"fnpt ny, joint EPDM | Ball valve 3v 1"fnpt ny, EPDM seal |
| 21 | 1.00 | JB-EL1010NY | Adapt. coudé 1" mnpt x 1"hb céd.80 ny | Elbow adapt. 1" mnpt x 1"hb ced.80 ny |
| 22 | 4.00 | DA-SHAS16 | Collier de serrage en acier inox. 1 1/16" x 1 1/2" | Stainless collar 1 1/16" x 1 1/2" |
| 24 | 1.00 | JB-IMB0808NY | Adapt. droit 1" mnpt x 1"hb céd.80 ny | Straight adapt. 1" mnpt x 1"hb ced.80 ny |
| 25 | 1.00 | MP-2200401 | Adapt. droit 1" mnpt céd.40 ny | Straight adapt. 1" mnpt ced.40 ny |
| 26 | 1.00 | MP-210040 | Capuchon 1"fnpt céd.40 ny | Cap 1"fnpt ced.40 ny |
| 27 | 1.00 | MP-G40002 | Gas ket 1/2" | 1/2" gas ket |
| 28 | 1.00 | NO-42836 | Rés. rect. 575 l, 150gal., 37" x 29" x 48", poly | Rect. tank 575 l, 150gal., 37" x 29" x 48", poly |
| 29 | 1.00 | JB-V MM0006N Y40 | Bouchon 3/4" mnpt céd.40 ny | Plug 3/4" mnpt ced.40 ny |
| 30 | 10.00 | LV-122J | Boyaux jaunes, 1/2" 600 lb/po2, PVC 2 pl. int + ext | Yellow hose 1/2, 2 pl y int + ext |
| 31 | 10.00 | LV-122J | Boyaux jaunes, 1/2" 600 lb/po2, PVC 2 pl. int + ext | Yellow hose 1/2, 2 pl y int + ext |
| 32 | 10.00 | LV-1PVC | Boyaux verts, 1", 85 lb/po2, PVC style "j" | Green hose style "j", 1", pvc |
| 33 | 10.00 | LV-1PVC | Boyaux verts, 1", 85 lb/po2, PVC style "j" | Green hose style "j", 1", pvc |
| 34 | 4.00 | MS-PR MS3 X3 | Plaque renfort montage skid | Reinforcement skid mounting plate |
| 35 | 1.00 | JB-M1000NY | Mamelon court 1" mnpt x 1" mnpt céd.80 ny | Close nipple 1" mnpt x 1" mnpt ced.80 ny |

Desc. Française Deuxième réservoir de 765 l et plomberie 1"
English Desc. Second 200 gal tank w. 1" plumbing

| Réf. | Quantité | Produit | Description française | English Description |
|------|----------|----------------|---|---|
| 1 | 1.00 | MS-B7652 | Bâti 765l carré | 765l square frame |
| 2 | 4.00 | BT-LN12 | Écrou freiné nylon 1/2 unc | Locknut nylon 1/2 unc |
| 3 | 4.00 | BT-124FL | Boulon 1/2 x 4" carr. fileté en longueur | Bolt 1/2 x 4" carr. full thread |
| 4 | 4.00 | MS-AC01 | Attache courroie universel | Universal strap attachment |
| 5 | 20.00 | SN-TS198 | Courroie sécurité noire 1 15/16" larg. | Polyester strap 1 15/16" width |
| 6 | 1.00 | MP-502010 | Coude agitateur 90 degrés 1/2" | Agitator elbow 90 degrees 1/2" |
| 7 | 1.00 | JB-SE12NY | Adapt. coudé 1/2" mnpt x 1/2" fnpt céd.80 ny | Elbow adapt. 1/2" mnpt x 1/2" fnpt ced.80 ny |
| 8 | 1.00 | JB-RB3412NY | Réduit 3/4" mnpt x 1/2" fnpt céd.80 ny | Reducer 3/4" mnpt x 1/2" fnpt ced.80 ny |
| 9 | 1.00 | JB-TT34NY40 | Adapt. en t 3/4" fnpt x 3/4" fnpt x 3/4" fnpt céd.40 ny | T adapt. 3/4" fnpt x 3/4" fnpt x 3/4" fnpt ced.40 ny. |
| 10 | 2.00 | RA-5032P | Adapt. de rés. 3/4" fnpt x 3/4" fnpt ny | Tank adapt. 3/4" fnpt x 3/4" fnpt ny |
| 11 | 2.00 | JB-M3400NY40 | Mamelon court 3/4" mnpt x 3/4" mnpt céd.40 ny | Close nipple 3/4" mnpt x 3/4" mnpt ced.40 ny |
| 12 | 1.00 | JB-PBVH34343 | Valve à bille 3v 3/4" fnpt ny, joint EPDM | Ball valve 3v 3/4" fnpt ny, EPDM seal |
| 13 | 1.00 | JB-EL3412NY40 | Adapt. coudé 3/4" mnpt x 1/2" hb céd.40 ny | Elbow adapt. 3/4" mnpt x 1/2" hb ced.40 ny |
| 14 | 4.00 | DA-HS6 | Collet 3/8" x 7/8" | Collar 3/8" x 7/8" |
| 15 | 3.00 | JB-IMB0604NY40 | Adapt. droit 3/4" mnpt x 1/2" hb céd.40 ny. | Straight adapt. 3/4" mnpt x 1/2" hb ced.40 ny. |
| 16 | 24.00 | LV-122J | Boyau jaune, 1/2" 600 lb/po2, PVC 2 pl. int + ext | Yellow hose 1/2, 2 ply int +ext |
| 17 | 3.00 | AU-TU1P | Tuyau 1" poly. noir céd.80 au pied | Black polypro.tube 1"sch.80 by feet |
| 18 | 1.00 | RA-5034P | Adapt. de rés. 1" fnpt x 1" fnpt ny | Tank adapt. 1" fnpt x 1" fnpt ny |
| 19 | 2.00 | DA-SHAS6 | Collier de serrage en acier inox. 3/8" x 7/8" | Stainless collar 3/8" x 7/8" |
| 20 | 1.00 | JB-PBVH10103 | Valve à bille 3v 1" fnpt ny, joint EPDM | Ball valve 3v 1" fnpt ny, EPDM seal |
| 21 | 1.00 | JB-EL1010NY | Adapt. coudé 1" mnpt x 1" hb céd.80 ny | Elbow adapt. 1" mnpt x 1" hb ced.80 ny |
| 22 | 4.00 | DA-SHAS16 | Collier de serrage en acier inox. 11/16" x 1 1/2" | Stainless collar 11/16" x 1 1/2" |
| 24 | 1.00 | JB-IMB0808NY | Adapt. droit 1" mnpt x 1" hb céd.80 ny | Straight adapt. 1" mnpt x 1" hb ced.80 ny |
| 25 | 1.00 | MP-2200401 | Adapt. droit 1" mnpt céd.40 ny | Straight adapt. 1" mnpt ced.40 ny |
| 26 | 1.00 | MP-210040 | Capuchon 1" fnpt céd.40 ny | Cap 1" fnpt ced.40 ny |
| 27 | 1.00 | MP-G40002 | Gasket 1/2 | 1/2" gasket |
| 28 | 1.00 | RA-10945 | Rés. rect. 765 l, 200gal., 36"x35"x48", poly | Rect. tank 765 l, 200gal., 36"x35"x48", poly |
| 29 | 1.00 | JB-VMM0006NY40 | Bouchon 3/4" mnpt céd.40 ny | Plug 3/4" mnpt ced.40 ny |
| 30 | 10.00 | LV-122J | Boyau jaune, 1/2" 600 lb/po2, PVC 2 pl. int + ext | Yellow hose 1/2, 2 ply int +ext |
| 31 | 10.00 | LV-122J | Boyau jaune, 1/2" 600 lb/po2, PVC 2 pl. int + ext | Yellow hose 1/2, 2 ply int +ext |
| 32 | 10.00 | LV-1PVC | Boyau vert, 1", 85 lb/po2, PVC style"j" | Green hose style "j", 1", pvc |
| 33 | 10.00 | LV-1PVC | Boyau vert, 1", 85 lb/po2, PVC style"j" | Green hose style "j", 1", pvc |
| 34 | 4.00 | MS-PRMS3X3 | Plaque renfort montage skid | Reinforcement skid mounting plate |
| 35 | 1.00 | JB-M1000NY | Mamelon court 1" mnpt x 1" mnpt céd.80 ny | Close nipple 1" mnpt x 1" mnpt ced.80 ny |

Enrouleur manuel, boyau jaune 1/2"
Manual rewind reel, 1/2" yellow hoase



| | | |
|--------------------------------|---------------|---------|
| IPULVCOMPC\RM200J1 | | |
| DATE: 1994-10-10 | PAR/ BY: R.D. | |
| REV: 2010-03-29 | PAR/ BY: D.T. | #REV: 1 |
| # REC.: RE-RM200J1 (200') | | |
| RE-RM150J1 (150') | | |
| RE-RM300J1 (300') RE-RM300J3 | | APP: |

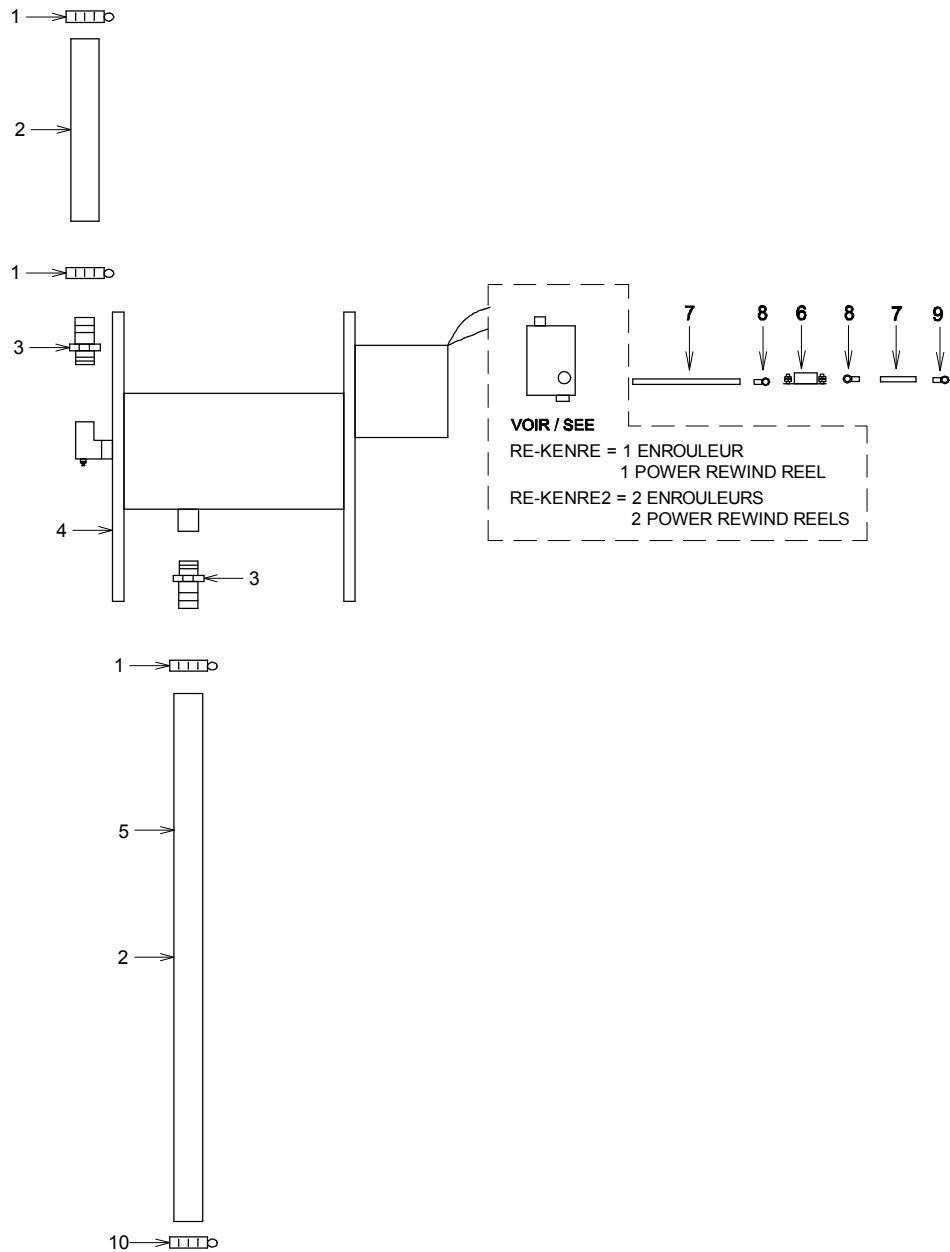
Desc. Française **Enrouleur manuel 1526, 300' boyau 1/2", 600 lb/po²**

English Desc. **Manual reel no 1526, 300' hose 1/2", 600 psi**

| Réf. | Quantité | Produit | Description française | English Description |
|------|----------|--------------|--|--|
| 1 | 4.00 | DA-SHAS6 | Collier de serrage en acier inox. 3/8" x 7/8" | Stainless collar 3/8" x 7/8" |
| 2 | 6.00 | LV-122J | Boyau jaune, 1/2" 600 lb/po ² , PVC 2 pl. int + ext | Yellow hose 1/2, 2 ply int +ext |
| 3 | 2.00 | JB-IMB0404BR | Adapt. droit 1/2"mnpt x 1/2"hb céd.40 br. | Straight adapt. 1/2"mnpt x 1/2"hb ced.40 br. |
| 4 | 1.00 | HR-15261718 | Enrouleur manuel 1/2"x300' s-sw | Man. reel 1/2"x300' s-swivel |
| 5 | 1.00 | AU-CL12G | Crampe 1/2" galvanisée | 1/2" galvanized clamp |
| 5 | 1.00 | LV-122J300 | Boyau jaune, 1/2", 600 LB/PO ² , PVC, int. jaune 300' | Yellow hose 1/2", 300', 600 psi ye |

Enrouleur 12 Vcc, boyau jaune 1/2"

12 Vdc power rewind reel, 1/2" yellow hose



| | | |
|-----------------------------|----------------|---------|
| \\PULVCOM\PC\RE300J1 | | |
| DATE: 1994-10-10 | PAR / BY: R.D. | |
| REV: 2010-04-01 | PAR / BY: D.T. | #REV: 1 |
| # REC.: RE-RE300J1 (300') | | |
| RE-RE200J1 (200') | | |
| RE-RE300JN1 (300') | | APP: |

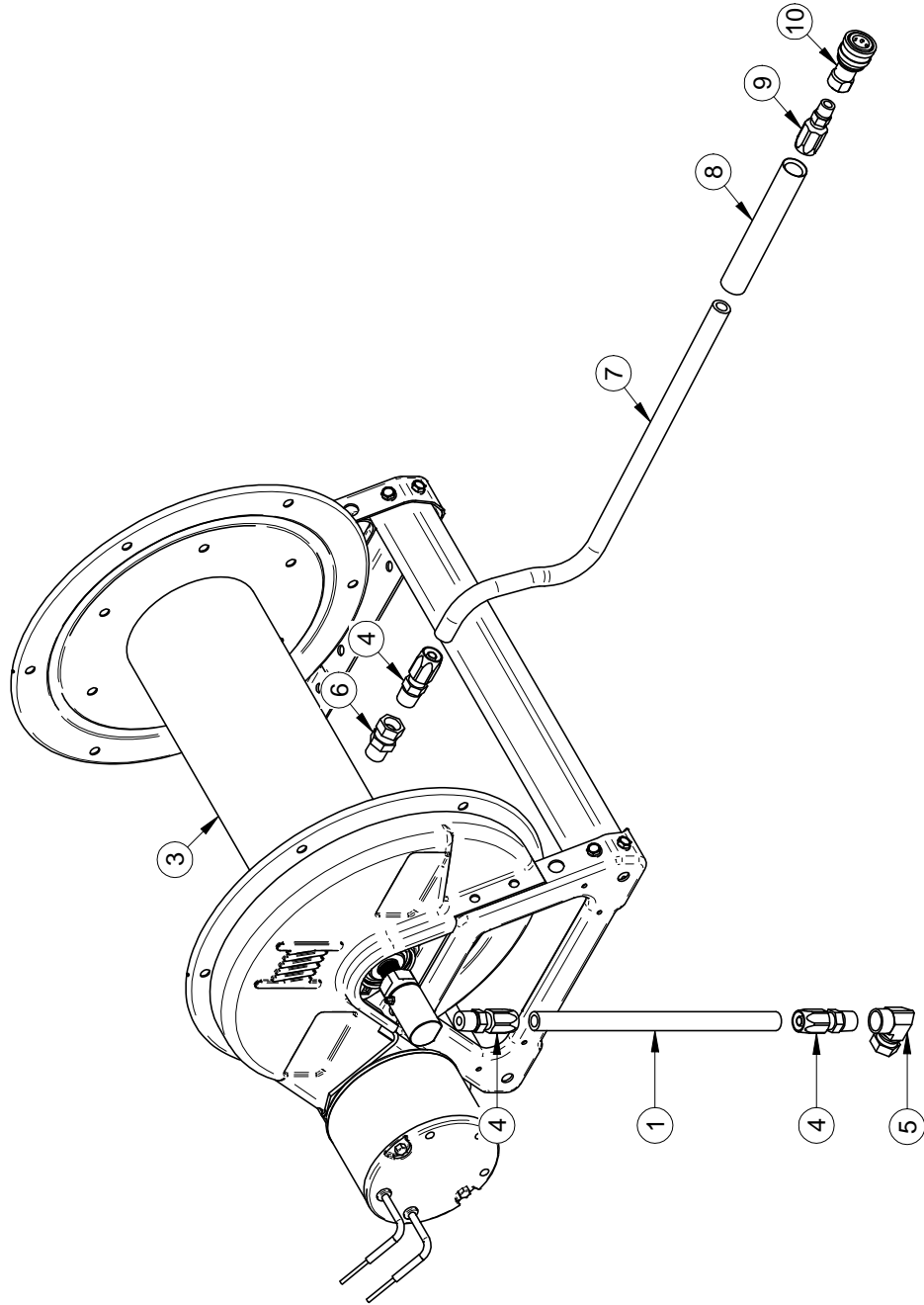
Desc. Française **Enrouleur 12 Vcc, 300' boyau pvc 1/2", 600 lb/po²**

English Desc. **12 Vdc power rewind reel, 300' of pvc hose 1/2"**

| Réf. | Quantité | Produit | Description française | English Description |
|------|----------|--------------|---|---|
| 1 | 3.00 | DA-HS6 | Collet 3/8" x 7/8" | Collar 3/8" x 7/8" |
| 2 | 6.00 | LV-122J | Boyau jaune, 1/2" 600 lb/po2, PVC 2 pl. int + ext | Yellow hose 1/2, 2 ply int +ext |
| 3 | 2.00 | JB-IMB0404BR | Adapt. droit 1/2"mnpt x 1/2"hb céd.40 br. | Straight adapt. 1/2"mnpt x 1/2"hb ced.40 br. |
| 4 | 1.00 | HR-15261718E | Enrouleur 12v 1/2"x300', s-swiv | 12v power reel 1/2"x300' s-swi |
| 5 | 1.00 | LV-122J300 | Boyau jaune, 1/2", 600 LB/PO2, PVC, int. jaune 300' | Yellow hose 1/2", 300', 600 psi ye |
| 6 | 1.00 | AU-CB6378 | Disjoncteur 40 amps*** | Breaker 40 amps*** |
| 7 | 25.00 | AU-K6 | Fil #6 à batterie 75 amp13 | #6 wire for battery 75 amp 13 |
| 8 | 2.00 | AU-7250 | Cosse fil k6, trou 1/4" non-isolé | Terminal for k6 wire 1/4" hole, non-insulated |
| 9 | 1.00 | AU-7321 | Cosse pour fil k-4, trou 3/8" | Terminal for k-4 cable 3/8" hole |
| 10 | 1.00 | DA-HC1014 | Collet pressé (step) 13/16"/ boyau 1/2" | Stepless clamp 13/16" for 1/2" hose |

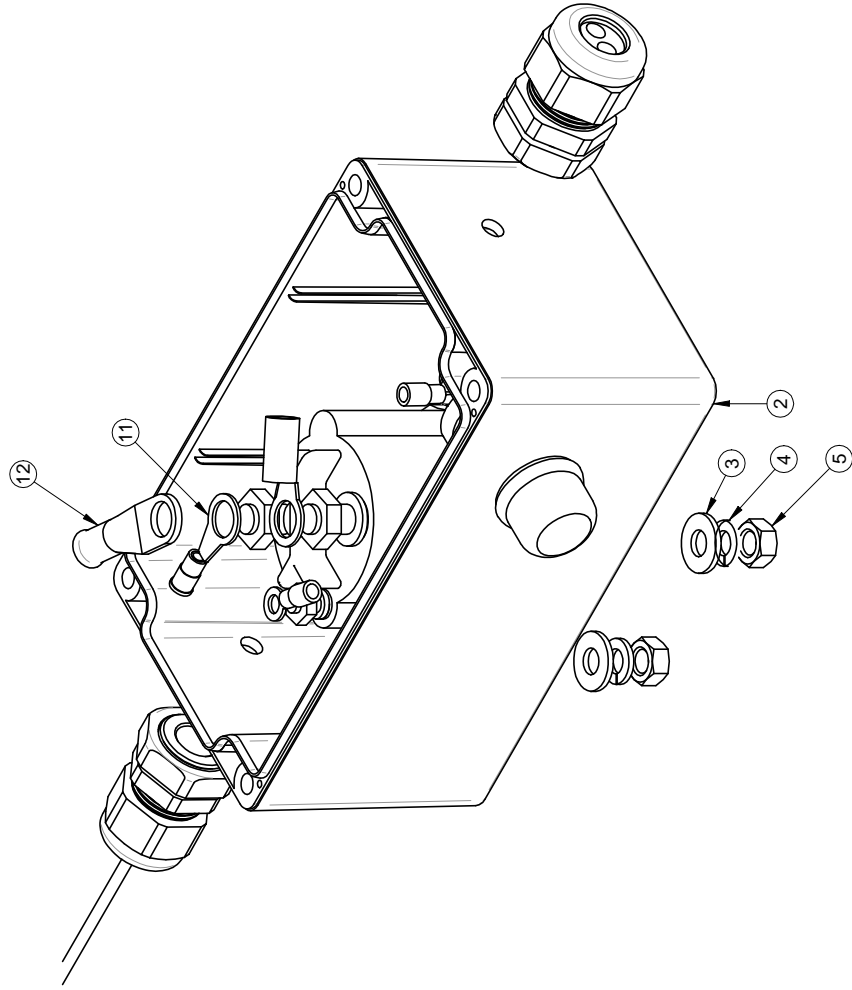
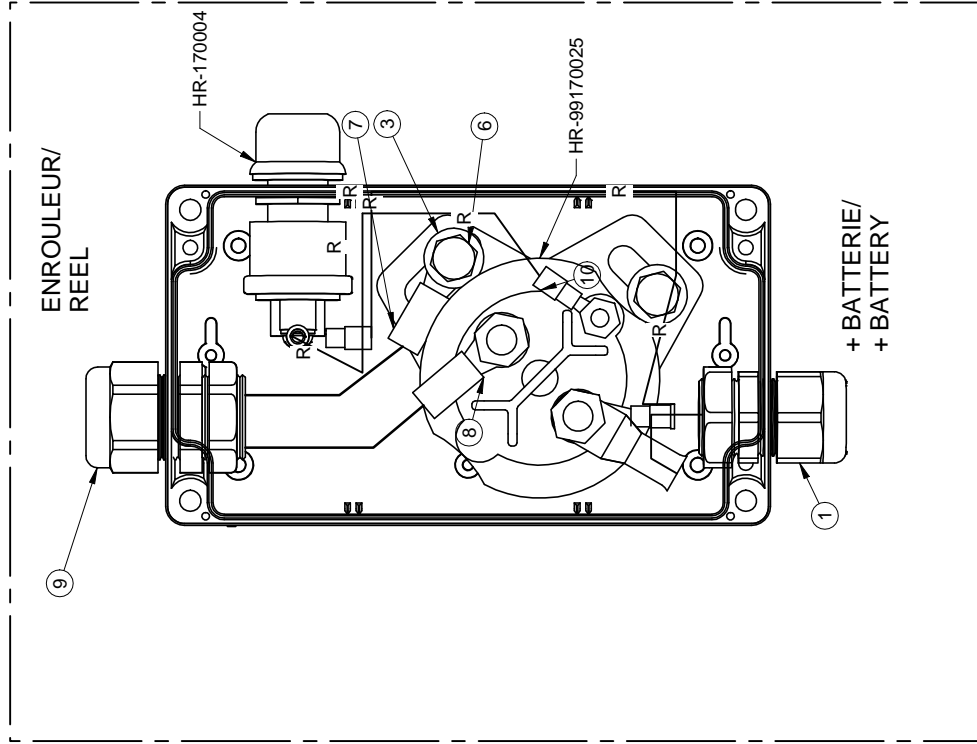
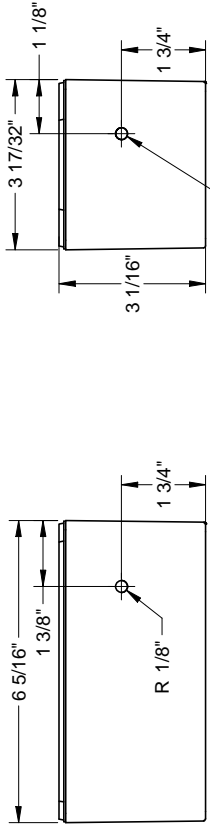
| # | REF. | Q. | L" |
|---|---------|----|------|
| 1 | LV-122J | 1 | 108" |
| 2 | AU-1271 | 1 | 14" |

| # | REF. | Q. |
|----|--------------|----|
| 3 | HR-15261718E | 1 |
| 4 | AU-441288 | 3 |
| 5 | MO-945588 | 1 |
| 6 | MO-920588 | 1 |
| 7 | LV-122J300 | 1 |
| 8 | FH-4888812 | 1 |
| 9 | AU-441268 | 1 |
| 10 | JB-3HSB | 1 |



| # | REF. | Q. | L" |
|----|---------|----|----|
| 13 | BE-161R | 2 | 6" |

| # | REF. | Q. |
|----|--------------|----|
| 1 | AU-CD13NABK | 1 |
| 2 | AU-1554K2GY | 1 |
| 3 | BT-FW14 | 4 |
| 4 | BT-LW14 | 2 |
| 5 | BT-N14 | 2 |
| 6 | BT-14114 | 2 |
| 7 | AU-CRSZY0825 | 1 |
| 8 | AU-CRSZY0837 | 1 |
| 9 | AU-CD16N6BK | 1 |
| 10 | DO-761019 | 3 |
| 11 | DO-761022 | 1 |
| 12 | AU-7321 | 1 |



1- LES VALEURS SONT EN POUCE SAUF SI SPECIFIÉ
 UNITS ARE IN INCHES UNLESS OTHERWISE SPECIFIED
 2- GENERAL TOLERANCES
 Fractions: ± 1/16"
 X.X: ± 0.01"
 X.XX: ± 0.005"
 X.XXX: ± 0.0025"



AVIS: L'information ci-dessus a été fournie en vertu de la Loi sur l'accès à l'information. Elle ne constitue ni une recommandation, ni une garantie, ni une responsabilité de MS GREGSON pour les droits de propriété, les brevets, les marques, les droits de reproduction, les droits de conception, les droits de fabrication et/ou les droits de distribution. MS GREGSON, who reserves all patent, trademark, copyright and other intellectual property rights therein.

FEUILLE / SHEET # CR390-0110
 DESCRIPTION Boîtier raccordement électrique (enrouleur 12 Vcc)
 #DESSIN / DRAWING # CR390-0110

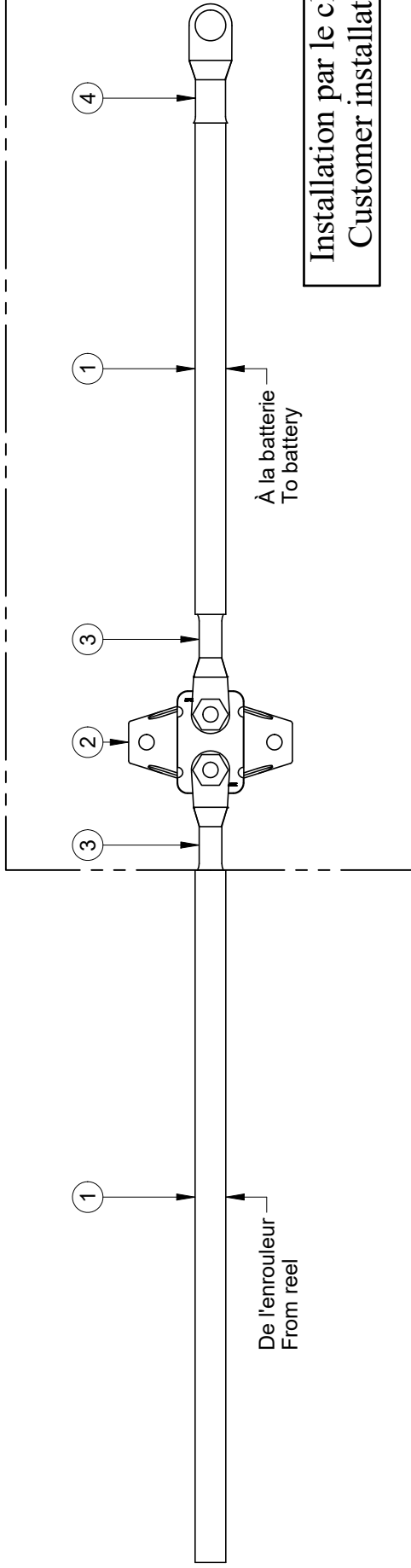
| DATE CREATION | CREATEUR / CREATOR | REVISION DATE | PAGE |
|---------------|--------------------|-------------------|---------|
| 2012/10/04 | martelg | 2017/07/05 | 1 of 1 |
| | | REVISION PAR / BY | allardp |
| | | ECHELLE / SCALE | 1:4 |
| | | REVISION | 1 |

| Rev | Description | Date | Approbation |
|-----|-------------|------|-------------|
| | | | |

| # | REF. | Q. | L" |
|---|------------|----|------|
| 1 | GT-TEW06RO | 1 | 300" |



| # | REF. | Q. |
|----|------------|----|
| 1* | GT-TEW06RO | 1 |
| 2 | AU-CB6378 | 1 |
| 3 | AU-7250 | 2 |
| 4 | AU-7321 | 1 |
| 5* | AU-SAZL44 | 1 |



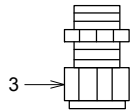
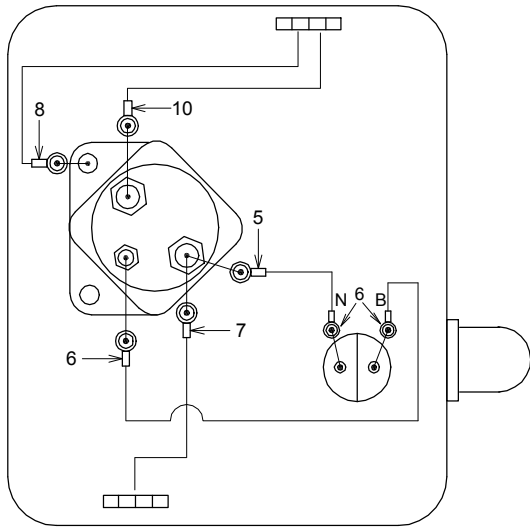
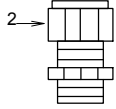
| Rev | Description | Date | Approbation |
|-----|----------------------|-------------------|-------------|
| 1 | GT-TEW06RO 0418/AU48 | 16-07-2016 JTrude | |

| | | | | | | |
|---|---|-------------------------------------|-----------------------------|------------------------------|------------------------------|----------------|
| 1- LES VALEURS SONT EN POUCES SAUF SI SPECIFIÉ UNITS ARE IN INCHES UNLESS OTHERWISE SPECIFIED 2- GENERAL TOLERANCES | AVIS: l'information ci-dessus a été fournie par le fabricant et MS GREGSON n'assume aucune responsabilité en ce qui concerne les droits de propriété, licence, brevet, droits de reproduction, etc. MS GREGSON, qui détient le droit de propriété et est le propriétaire de tous les droits de reproduction, etc. MS GREGSON, qui détient le droit de propriété et est le propriétaire de tous les droits de reproduction, etc. | # FEUILLE / SHEET # CR390-0112 | DATE CREATION 2010-11-10 | CREATEUR / CREATOR tesson | REVISION DATE 02019-01-16 | PAGE 1 of 1 |
| DESCRIPTION Raccordement électrique (disjoncteur 40 A) | | REVISION PAR / BY trudej | | ECHELLE / SCALE 1:40 | | REVISION 1 |
| | | # DRESSIN / DRAWING # CR390-0112 | | | | |

Ensemble pour enrouleur électrique 12 Vcc avec boîtier

Kit for 12 Vdc electrical reel with cover box

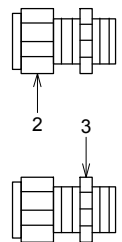
ENROULEUR



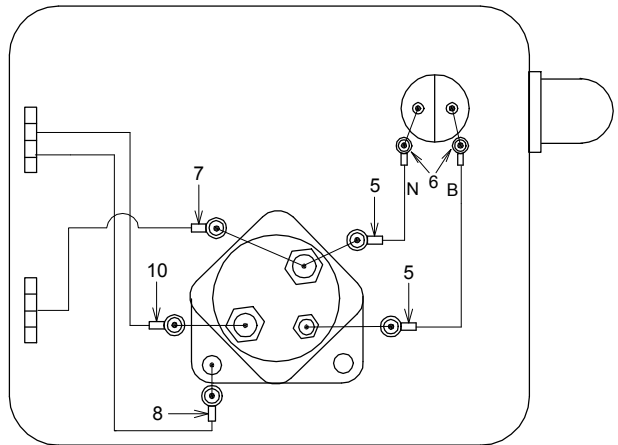
ALIMENTATION
BATTERIE/
BATTERY

POUR MONTAGE PLATE FORME CAMION

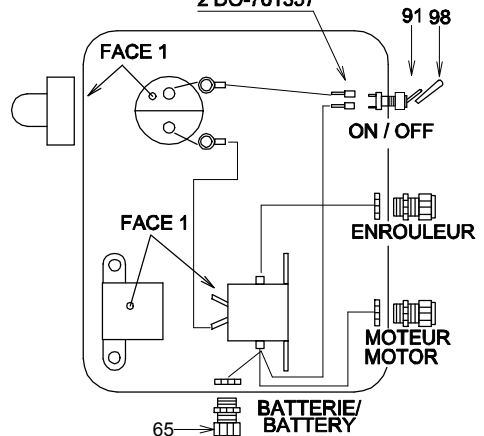
ENROULEUR



ALIMENTATION
BATTERIE/
BATTERY

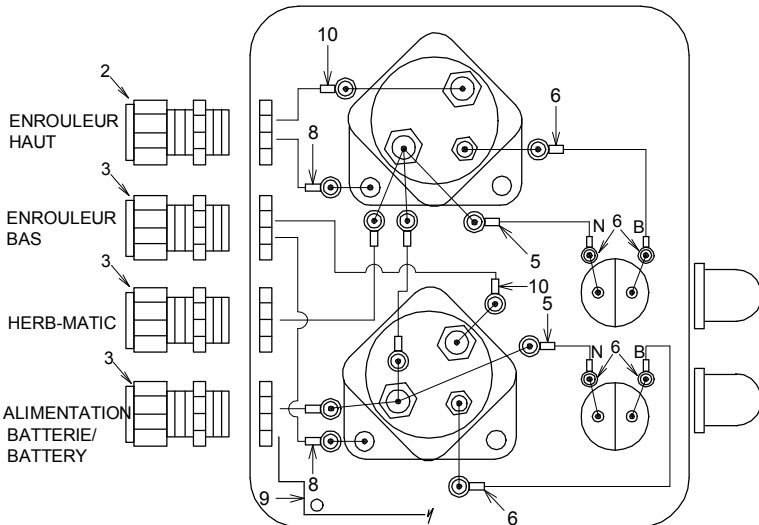


POUR MONTAGE DU HS1000
2 DO-761357



RE-KENRE2

TERMINAL NON IDENTIFIER = NO 7 DANS LA RECETTE



IPULVCOMPC\KENRE

DATE: 1997-11-23

PAR/ BY: P.B.

REV: 2010-04-01

PAR/ BY: D.T.

#REV: 2

REC.: RE-KENRE

RE-KENRE2

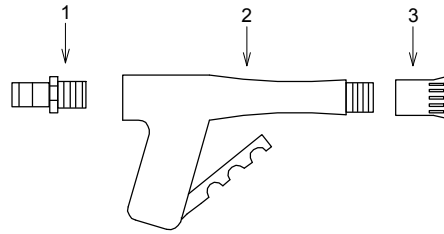
APP:

Desc. Française **Boîtier de raccord complet pour un enrouleur 12 Vcc**
 English Desc. **Conection box kit for one 12Vdc reel**

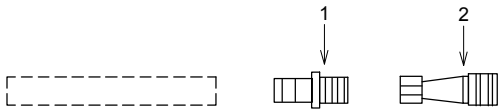
| Réf. | Quantité | Produit | Description française | English Description |
|------|----------|--------------|---|------------------------------------|
| 1 | 1.00 | AU-1554K2GY | Boîtier gris 6.3"lo.x3.5"la.x3.5"h | box 6.3"lo.x3.5"w.x3.5"h |
| 2 | 1.00 | AU-CD16N6BK | Connecteur 1/2"npt-2sorties fil 3/16 | 1/2" connector npt |
| 3 | 1.00 | AU-CD13NABK | Conenteur fil 14/3 Sow, trou 1/2"noir, 1/2"mnpt | Con.fil 14/3sow,1/2"hole, 1/2"mnpt |
| 5 | 1.00 | DO-761022 | Cosse bleue 3/8" trou cali 16-14 | Term bleu 3/8" trou cali 16-14 |
| 6 | 3.00 | DO-761019 | Cosse ronde bleue | Round blue terminal |
| 7 | 1.00 | AU-7321 | Cosse pour fil k-4, trou 3/8" | Terminal for k-4 cable 3/8" hole |
| 8 | 1.00 | AU-CRSZY0825 | Cosse rouge trou 1/4" | Terminal red 1/4" hole |
| 10 | 1.00 | AU-CRSZY0837 | Cosse rouge trou 3/8" | Terminal red hole 3/8" |

Pistolets pour pelouse Lawn care gun

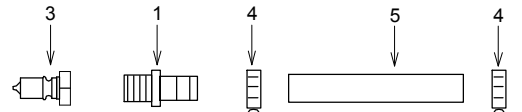
MS-FULESCO



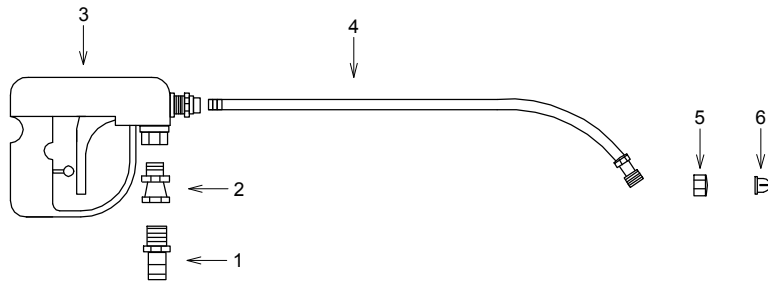
MS-QCFB12



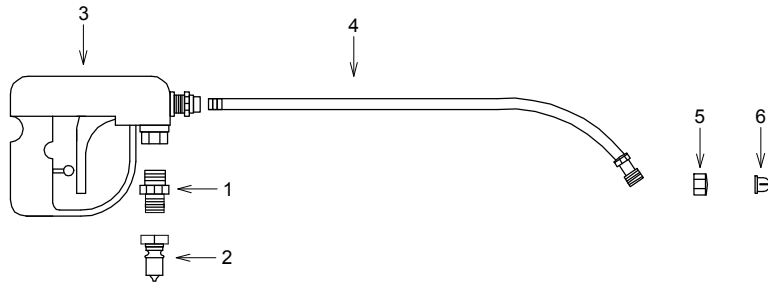
MS-QCLESCO



MS-MSSW



MS-MSQC



| | | |
|----------------------|---------------|---------|
| I\PULVCOMPC\FUGAZON | | |
| DATE: 2001-10-16 | PAR/ BY: P.B. | |
| REV: 2004-03-12 | PAR/ BY: E.L. | #REV: 0 |
| # REC.: MS-FULESCO | | |
| MS-MSSW / MS-QCFB12 | | |
| MS-MSQC / MS-QCLESCO | | APP: |

Desc. Française **Kit de raccord mâle 3/8" à bille pour pistolet lesco**

English Desc. **Kit de raccord mâle 3/8" à bille pour pistolet lesco**

| Réf. | Quantité | Produit | Description française | English Description |
|------|----------|--------------|--|--|
| 1 | 1.00 | JB-IMB0304BR | Adapt. droit 3/8"mnpt x 1/2"hb céd.40 br. | Straight adapt. 3/8"mnpt x 1/2"hb ced.40 br. |
| 3 | 1.00 | JB-3HPB | Qc à bille fermé mâle 3/8" x 3/8"fnpt br | Close ball coupler male 3/8" x 3/8"fnpt br |
| 4 | 2.00 | DA-HS6 | Collet 3/8" x 7/8" | Collar 3/8" x 7/8" |
| 5 | 3.50 | LV-122JN | Boyau jaune (int. noir), 1/2", 600 lb/po2, PVC | Yellow hose 1/2" black ins. 600p*** |

Desc. Française **Pistolet à gazon lesco, buse 15l/min, entrée swivel**

English Desc. **Lesco lawn gun, 4 gpm nozzle, swivel inlet**

| Réf. | Quantité | Produit | Description française | English Description |
|------|----------|----------------|---|--|
| 1 | 1.00 | JB-2599034 | Adapt. pivotant 3/4"mnpt x 1/2"hb ny. | Swivel 3/4"mnpt x 1/2"hb ny. |
| 2 | 1.00 | LE-007433 | Fusil à pelouse Lesco, sans buse, 3/4"fnpt*** | Lesco lawn care gun, w/o nozzle, 3/4"fnpt*** |
| 3 | 1.00 | JB-CP2567040NY | Buse rouge 4gpm 12 à 18 li/m | Red nozzle 4 gpm 12 to18 li/m |

Desc. Française **Pistolet à gazon TeeJet, buse 15 l/min, entrée swivel 1/2"**

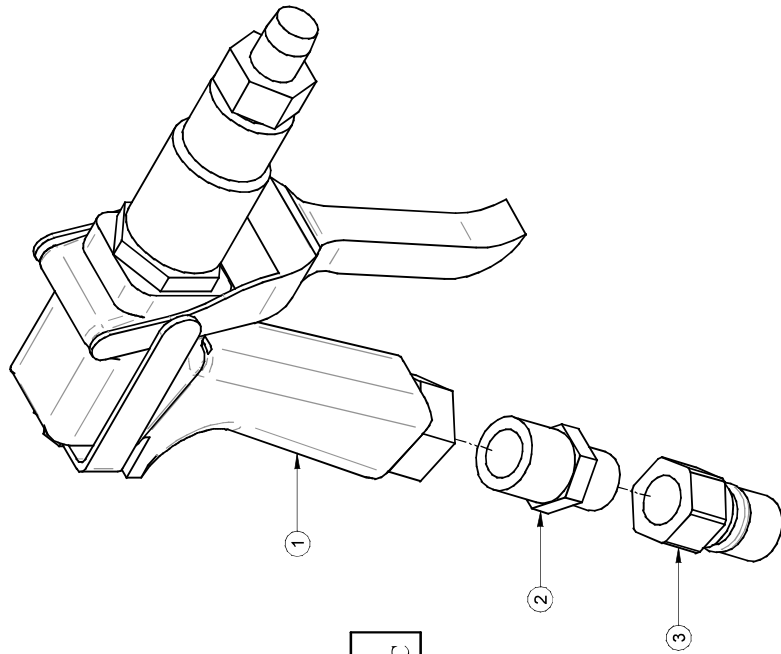
English Desc. **TeeJet lawn gun, 4 gpm nozzle, 1/2" swivel h-b inlet**

| Réf. | Quantité | Produit | Description française | English Description |
|------|----------|----------------|---------------------------------------|-------------------------------|
| 1 | 1.00 | JB-2599034 | Adapt. pivotant 3/4"mnpt x 1/2"hb ny. | Swivel 3/4"mnpt x 1/2"hb ny. |
| 2 | 1.00 | JB-256600 | Fusil Spray. Sys. sans jet, pelou | Lawn gun Spray. Sys. no jet |
| 3 | 1.00 | JB-CP2567040NY | Buse rouge 4gpm 12 à 18 li/m | Red nozzle 4 gpm 12 to18 li/m |

BOM**MS-QCFB12****REVISION****0**Desc. Française **Ensemble raccord rapide femelle 3/8" à bille / boyau 1/2"**English Desc. **Kit raccord rapide femelle 3/8" à bille / boyau 1/2"**

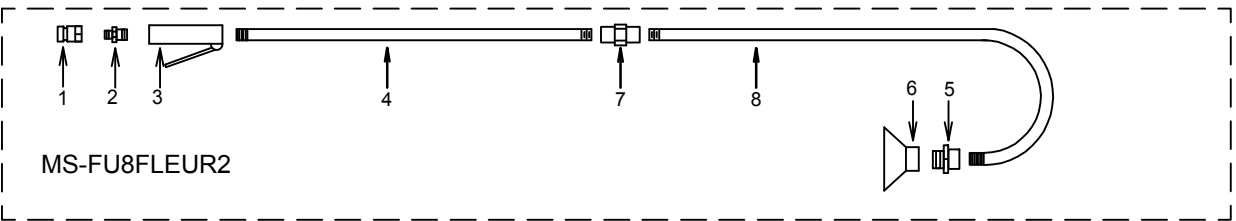
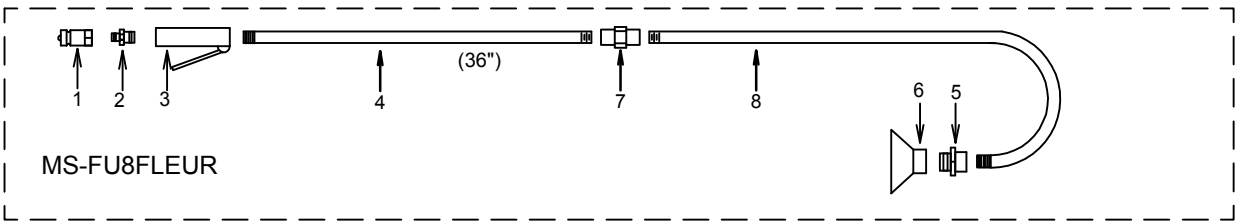
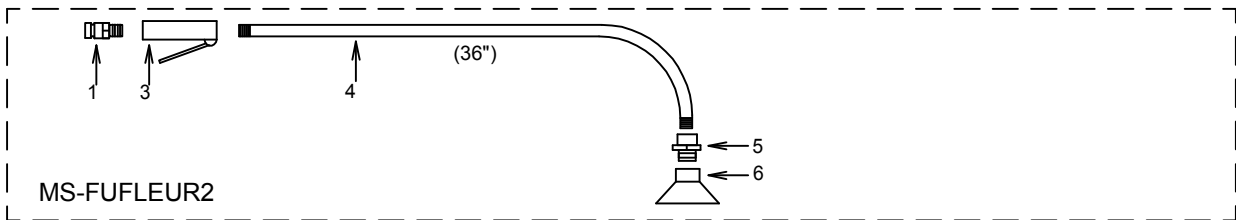
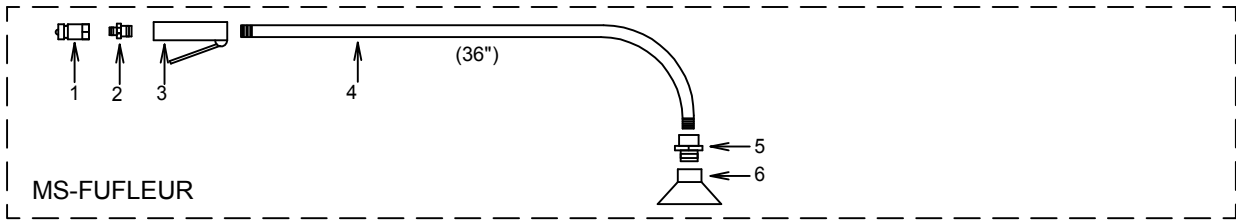
| Réf. | Quantité | Produit | Description française | English Description |
|------|----------|--------------|---|--|
| 1 | 1.00 | JB-IMB0304BR | Adapt. droit 3/8" mnpt x 1/2" hb céd.40 br. | Straight adapt. 3/8" mnpt x 1/2" hb ced.40 br. |
| 2 | 1.00 | JB-3HSB | Qc à bille fermé fem. 3/8" x 3/8" fnpt br | Close ball coupler fem. 3/8" x 3/8" fnpt br |

| # | REF. | Q. |
|---|--------------|----|
| 1 | GG-JD9C | 1 |
| 2 | JB-RMM0304BR | 1 |
| 3 | JB-3HPB | 1 |



NOTE:
Enlever l'adaptateur du pistolet JD9C

FUSILS A FLEURS FLOWERS GUNS



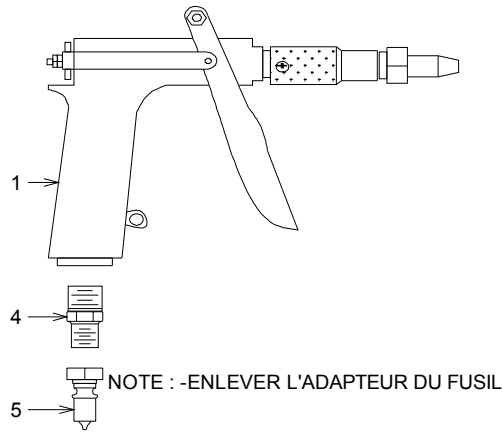
| | | |
|---------------------|-----------------------|---------|
| | PULVÉRISATEUR MS Inc. | |
| | MS SPRAYER Inc. | |
| \PULVCOM\PC\FUFLEUR | | |
| DATE: 1997-06-27 | PAR/By: R.D. | |
| REV: 2012-09-18 | PAR/By: G.M. | #REV: 2 |
| # REC.: MS-FUFLEUR | | |
| MS-FUFLEUR2 | | |
| MS-FU8FLEUR | MS-FU8FLEUR2 | APP: |

Desc. Française § Pistolet 3' pour fleurs sur coupleur rapide

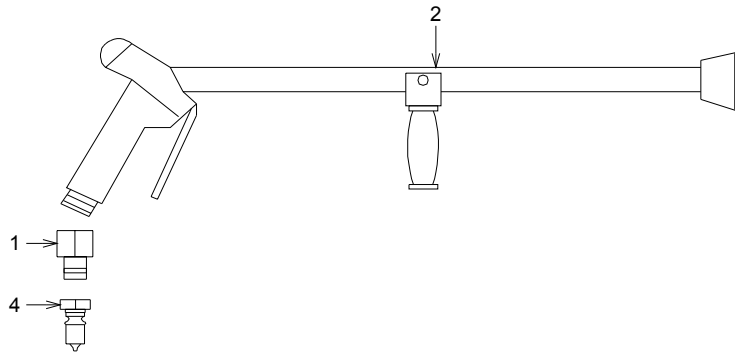
English Desc. § 3' gun for flower on quick-coupler


| Réf. | Quantité | Produit | Description française | English Description |
|------|----------|----------------|--|--|
| 1 | 1.00 | JB-3HPB | Qc à bille fermé mâle 3/8" x 3/8"fnpt br | Close ball coupler male 3/8" x 3/8"fnpt br |
| 2 | 1.00 | JB-RMM0304NY | Mamelon réd. 1/2"mnpt x 3/8"mnpt céd.80 ny | Nipple red. 1/2"mnpt x 3/8"mnpt ced.80 ny |
| 3 | 1.00 | MP-2919039 | Fusil m29, plastique, 18gal/min | Trigger gun m29 plastic 18gpm |
| 5 | 1.00 | JB-IHF0004NY40 | Adapt. droit 3/4"mg x 1/2"fnpt céd.40 ny. | Straight adapt. 3/4"mg x 1/2"fnpt ced.40 ny. |
| 6 | 1.00 | AU-400A | § Buse brise jet en aluminium de 23 à 37 l/min | § Aluminium shower head nozzle, 6 to 10 gpm |

MS-JD9CSLQC



MS-FU33QC
MS-FU33LQC



| | | | |
|---|-----------|------------------------------|------|
|  | | PULVÉRISATEUR MS Inc. | |
| | | PULVCOMPC\FUARBRE | |
| DATE: 2001-10-15 | PAR: P.B. | | |
| REV: 2006-03-16 | PAR: D.T. | #REV: 0 | |
| TITRE: FUSILS A ARBRE SUR Q-C | | | |
| # REC.: MS-JD9CSLQC | | | |
| MS-FU33QC | | | |
| MS-FU33LQC | | | APP: |



PULVÉRISATEUR MS
Div. de RAD Technologies Inc.
4300 rue Vachon, Drummondville QC J2B 6V4, Canada
Tél.: 819-474-1910 Fax: 819-474-5317 sales@msspray.com

BOM

MS-FU33QC

REVISION

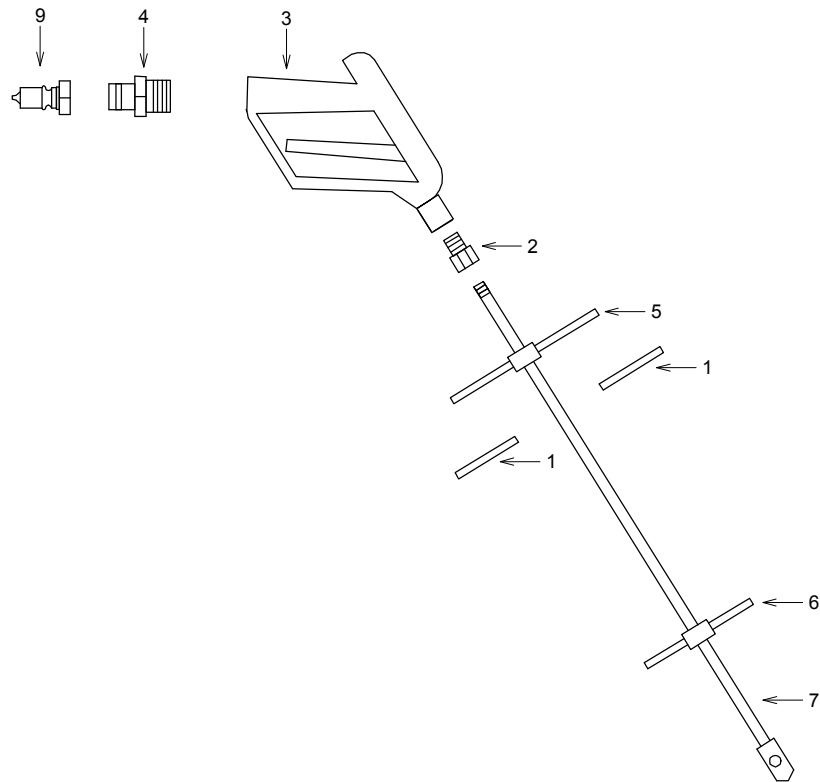
0

Desc. Française **§ Pistolet n°33 à portée moyenne sur coupleur rapide**

English Desc. **§ No 33 medium range spray gun on quick-coupler**

| Réf. | Quantité | Produit | Description française | English Description |
|------|----------|-------------|--|--|
| 1 | 1.00 | AU-120DC | Réduit 1/2"fnpt x 3/8"mnpt céd.40 laiton | Reducer 1/2"fnpt x 3/8"mnpt ced.40 br |
| 2 | 1.00 | JB-33810010 | Fusil arbre no. 33, buse 3mm | No. 33 tree spray gun, 3mm nozzle |
| 2 | 1.00 | JB-33812300 | Buse 2.2 mm | Nozzle 2.2 mm |
| 4 | 1.00 | JB-3HPB | Qc à bille fermé mâle 3/8" x 3/8"fnpt br | Close ball coupler male 3/8" x 3/8"fnpt br |

INJECTEUR RACINAIRE ROOT INJECTOR



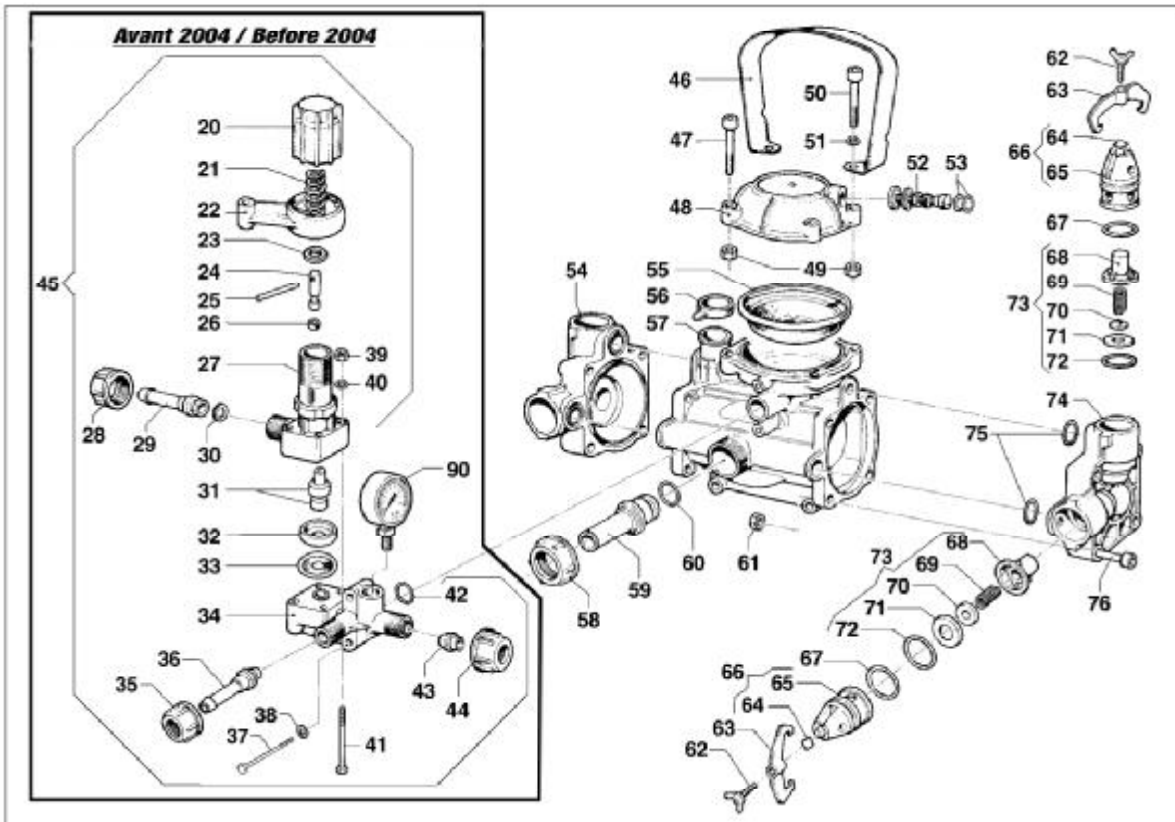
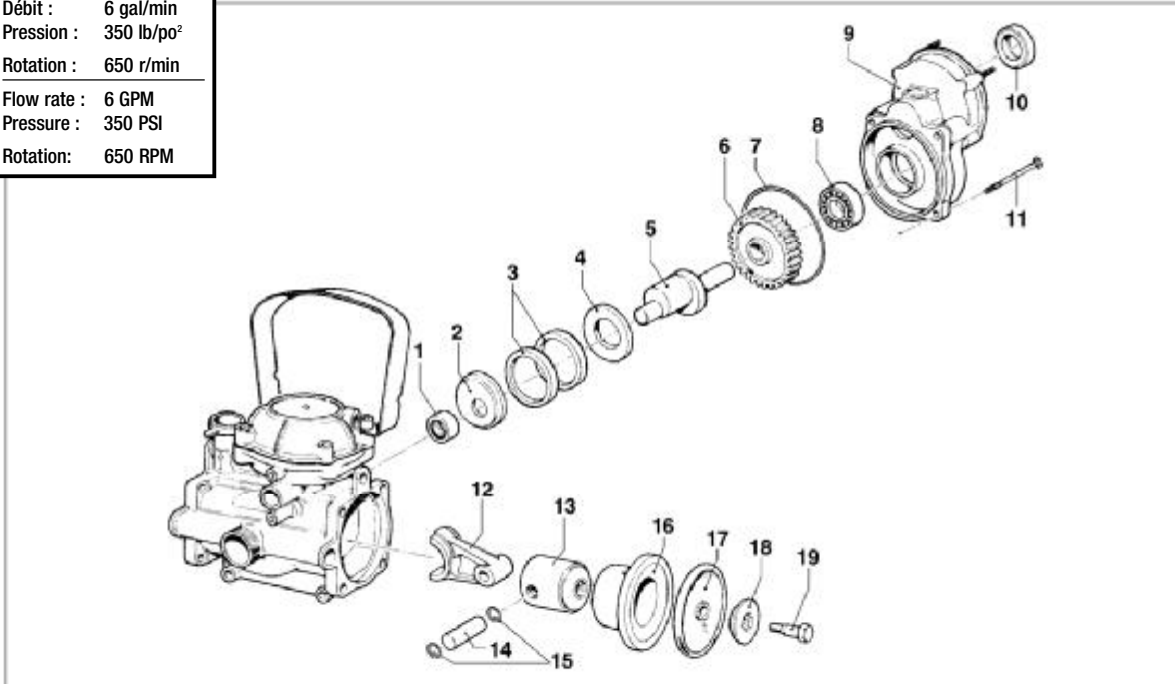
| | | |
|-------------------------|---------------|---------|
| I\PULVCOMPC\FUINJRACINE | | |
| DATE: 2001-10-16 | PAR/ BY: P.B. | |
| REV: 2010-03-16 | PAR/ BY: D.T. | #REV: 0 |
| # REC.: MS-MSINJ | | |
| | | APP: |

Desc. Française § **Injecteur racinaire sur coupleur rapide**

English Desc. § **Root feeder on quick-coupler**

| Réf. | Quantité | Produit | Description française | English Description |
|------|----------|--------------|--|--|
| 1 | 0.75 | AS-CV12 | Boyau clair 1/2", 3/4", 45 lbs/po2 | Clear hose 1/2", 3/4", 45 psi |
| 2 | 1.00 | AU-S1020CB | Réduit 3/8"fnpt x 1/4"mnpt céd.80 pl | Reducer 3/8"fnpt x 1/4"mnpt ced.80 pl |
| 3 | 1.00 | AU-ST1100B | Pistolet 7gpm, 2750 lbs, eau froide (ens. répar.non disp.) | Spray gun 7 gpm,2750 psi, cold water (no repair parts) |
| 4 | 1.00 | JB-WMM0003BR | Mamelon 3/8"mnpt x 3/8"mnpt céd.40 br | Nipple 3/8"mnpt x 3/8"mnpt ced.40 br |
| 5 | 1.00 | MS-INJPA | Poignée d'injecteur ms | Ms injector handle |
| 6 | 1.00 | MS-INJPIED | Pied d'injecteur MS | MS injector foot |
| 7 | 1.00 | MS-INJT1 | Tige d'injec.+pointe souder | Injec.rod+welded point |
| 9 | 1.00 | JB-3HPB | Qc à bille fermé mâle 3/8" x 3/8"fnpt br | Close ball coupler male 3/8" x 3/8"fnpt br |

| | |
|-------------|------------------------|
| Débit : | 6 gal/min |
| Pression : | 350 lb/po ² |
| Rotation : | 650 r/min |
| Flow rate : | 6 GPM |
| Pressure : | 350 PSI |
| Rotation : | 650 RPM |

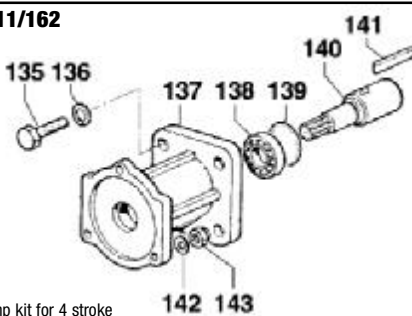


Après 2004 voir p.3 / After 2004 see p.3

| Ref | No MS | No Comet | Description | Note | Qty | Ref | No MS | No Comet | Description | Note | Qty |
|-----|-------------|-----------|----------------------------|---------------|-----|-----|-------------|-----------|-----------------------------|-------------|-----|
| 1 | CO-437/17 | 0437 0017 | Roller Bearing | Ø15x21x12 | 1 | 39 | CO-604/46 | 0604 0046 | Nut | M5x6,8 | 4 |
| 2 | CO-601/235 | 0601 0235 | Spacer | | 1 | 40 | CO-2811/37 | 2811 0037 | Washer | Ø5,3x10x1 | 4 |
| 3 | CO-10/12 | 0010 0012 | Connecting Rod Ring | Ø47x39x5 | 2 | 41 | CO-3607/109 | 3607 0109 | Hexagonal Screw | M5x45 | 4 |
| 4 | CO-2813/73 | 2813 0073 | Connecting Rod Washer | Ø46xØ32,5x3 | 1 | 42 | CO-1210/25 | 1210 0025 | O-Ring | Ø2,9x13,8 | 1 |
| 5 | CO-1/291 | 0001 0291 | Eccentric Shaft | | 1 | 43 | CO-3202/14 | 3202 0014 | Plug | | 1 |
| 6 | CO-409/17 | 0409 0017 | External Gear | ZE 54 | 1 | 44 | CO-1200/20 | 1200 0020 | Wing Nut | 18MB | 1 |
| 7 | CO-1210/53 | 1210 0053 | O-Ring | 1,78x72,75 | 1 | 45 | CO-1215/14 | 1215 0014 | Regulation Valve Assembly | | 1 |
| 8 | CO-438/65 | 0438 0065 | Ball Bearing | Ø15x32x9 | 1 | 46 | CO-1818/24 | 1818 0024 | Knob | | 1 |
| 9 | CO-3002/491 | 3002 0491 | Support | | 1 | 47 | CO-3609/165 | 3609 0165 | Screw | M8x35 | 2 |
| 10 | CO-19/88 | 0019 0088 | Oil Seal | Ø15x30x7 | 1 | 48 | CO-3/11 | 0003 0011 | Pressure Accumulator | | 1 |
| | CO-19/86 | 0019 0086 | Oil Seal | Ø20x30x7 | 1 | 49 | CO-604/63 | 0604 0063 | Nut | M8x6,5 | 4 |
| 11 | CO-3609/173 | 3609 0173 | Screw | M5x25 | 4 | 50 | CO-3609/162 | 3609 0162 | Screw | M8x40 | 2 |
| 12 | CO-205/59 | 0205 0059 | Connecting Rod Assembly | | 1 | 51 | CO-2811/16 | 2811 0016 | Washer | Ø8,4x17x1,6 | 2 |
| 13 | CO-2409/23 | 2409 0023 | Piston | Ø45 | 2 | 52 | CO-3610/3 | 3610 0003 | Air Valve | | 1 |
| 14 | CO-3011/6 | 3011 0006 | Gudgeon Pin | Ø12x36,5 | 2 | 53 | CO-1209/33 | 1209 0033 | Gasket | Ø14x7,5x2 | 2 |
| 15 | CO-3020/20 | 3020 0020 | Inner Seeger | Ø12 | 4 | 54 | CO-3218/15 | 3218 0015 | Pump Manifold | | 1 |
| 16 | CO-400/69 | 0400 0069 | Piston Sleeve | Ø45 | 2 | 55 | CO-1800/33 | 1800 0033 | Diaphragm | | 1 |
| 17 | CO-1800/20 | 1800 0020 | Diaphragm Buna | Ø74 | 2 | 56 | CO-1800/79 | 1800 0079 | Diaphragm | | 1 |
| | CO-1800/102 | 1800 0102 | Diaphragm Desmo | | 2 | 57 | CO-403/134 | 0403 0134 | Pump Crankcase | | 1 |
| 18 | CO-602/33 | 0602 0033 | Disc | | 2 | 58 | CO-1200/8 | 1200 0008 | Wing Nut | 30MB | 1 |
| 19 | CO-3605/27 | 3605 0027 | Diaphragm Holder Screw | M8 | 2 | 59 | CO-2800/16 | 2800 0016 | Suction Hose Tail | Ø13,5x18 | 1 |
| 20 | CO-1223/90 | 1223 0090 | Wing Nut | | 1 | 60 | CO-1210/46 | 1210 0046 | O-Ring | 2,62x17,13 | 1 |
| 21 | CO-1802/48 | 1802 0048 | Spring (Wire Ø3,2) | Øe22x59 | 1 | 61 | CO-604/63 | 0604 0063 | Nut | M8x6,5 | 8 |
| 22 | CO-1600/68 | 1600 0068 | Lever | | 1 | 62 | CO-3605/32 | 3605 0032 | Wing Nut Screw | | 4 |
| 23 | CO-2811/2 | 2811 0002 | Washer | Ø10,5x20x2 | 1 | 63 | CO-418/18 | 0418 0018 | U-Bolt | | 4 |
| 24 | CO-15/13 | 0015 0013 | Regulation Valve Rod | | 1 | 64 | CO-2403/75 | 2403 0075 | Plate | | 4 |
| 25 | CO-3005/27 | 3005 0027 | Pin | 4x40 | 1 | 65 | CO-3202/27 | 3202 0027 | Plug | | 4 |
| 26 | CO-1216/6 | 1216 0006 | Viton® Gasket | Ø6,2x10,1x3,2 | 1 | 66 | CO-3202/214 | 3202 0214 | Plug | | 1 |
| 27 | CO-424/46 | 0424 0046 | Regulation Valve Body | | 1 | 67 | CO-1210/52 | 1210 0052 | O-Ring (Silicon) | 3,53x21,82 | 4 |
| 28 | CO-1200/27 | 1200 0027 | Wing Nut | 1/2" GAS | 1 | 68 | CO-1205/7 | 1205 0007 | Suction/Delivery Valve Cage | | 4 |
| 29 | CO-2800/20 | 2800 0020 | Straight Hose By-pass Tail | Ø10x13 | 1 | 69 | CO-1802/15 | 1802 0015 | Spring (Wire Ø0,8) | Øe11x17 | 4 |
| 30 | CO-1210/57 | 1210 0057 | O-Ring | Ø2,62x10,78 | 1 | 70 | CO-3604/7 | 3604 0007 | Suction/Delivery Valve | | 4 |
| 31 | CO-3600/88 | 3600 0088 | Regulation Valve | | 1 | 71 | CO-3009/23 | 3009 0023 | Suction/Delivery Valve Seat | | 4 |
| 32 | CO-3009/29 | 3009 0029 | Valve Seat | | 1 | 72 | CO-1210/29 | 1210 0029 | O-Ring | 2,62x25,07 | 4 |
| 33 | CO-1209/30 | 1209 0030 | Gasket | Ø11x29,7x2,5 | 1 | 73 | CO-1212/4 | 1212 0004 | Suction Valve Assembly kit | | 2 |
| 34 | CO-424/198 | 0424 0198 | Body | | 1 | 74 | CO-3218/16 | 3218 0016 | Pump Manifold | | 1 |
| 35 | CO-1200/20 | 1200 0020 | Wing Nut | 18MB | 1 | 75 | CO-1210/46 | 1210 0046 | O-Ring | 2,62x17,13 | 4 |
| 36 | CO-2802/15 | 2802 0015 | Delivery Hose Tail | Ø6x9,5 | 1 | 76 | CO-3609/162 | 3609 0162 | Screw | M8x40 | 8 |
| 37 | CO-3609/17 | 3609 0017 | Screw | M6x40 | 2 | 90 | CO-1816/78 | 1816 0078 | Pressure Gauge | | 1 |
| 38 | CO-2811/30 | 2811 0030 | Washer | Ø6,4x12,5x1,6 | 2 | | | | | | |

AVANT 2005 / BEFORE 2005

CO-5011/162

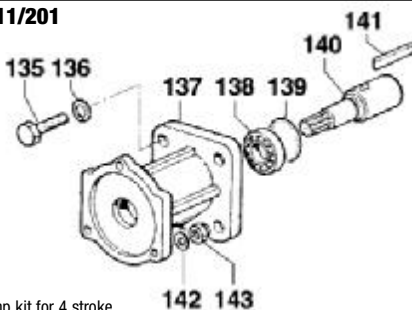


Motorpump kit for 4 stroke
Gas engine 3/4" shaft

| Ref | No MS | No Comet | Description | Note | Qty |
|-----|-------------|-----------|-----------------|-------------|-----|
| 135 | CO-3607/119 | 3607 0119 | Hexagonal Screw | 3/4" Motor | 4 |
| | CO-3607/26 | 3607 0026 | Hexagonal Screw | 5/8" Honda | 4 |
| 136 | CO-2819/4 | 2819 0004 | Spring Washer | Ø8,4x14,4x2 | 4 |
| 137 | CO-3016/35 | 3016 0035 | Flange | | 1 |
| 138 | CO-438/62 | 0438 0062 | Ball Bearing | Ø20x37x9 | 1 |
| 139 | CO-3020/19 | 3020 0019 | Inner Seeger | | 1 |
| 140 | CO-31/6 | 0031 0006 | Throughshaft | 3/4" Motor | 1 |
| | CO-31/7 | 0031 0007 | Throughshaft | 5/8" Honda | 1 |
| 141 | CO-1602/16 | 1602 0016 | Key | 5x4,7x40 | 1 |
| 142 | CO-2811/37 | 2811 0037 | Washer | 5,3x10x1 | 3 |
| 143 | CO-604/46 | 0604 0046 | Nut | M5x6,8 | 3 |

APRÈS 2005 / AFTER 2005

CO-5011/201

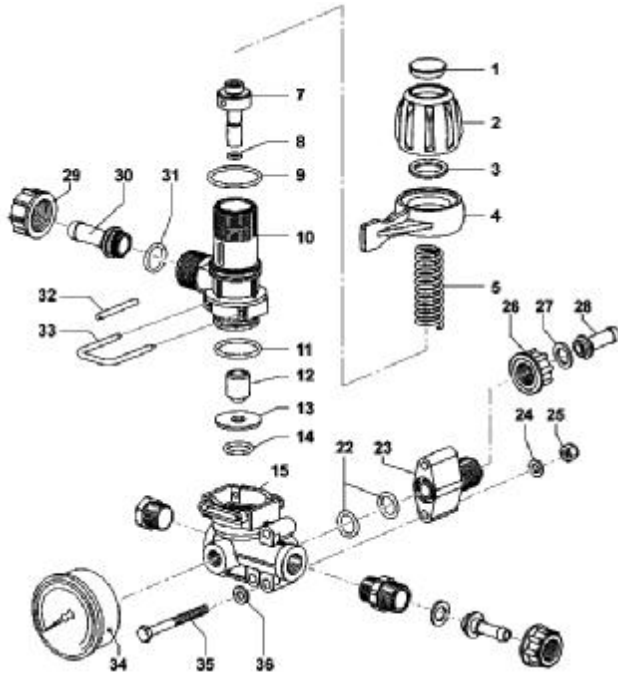


Motorpump kit for 4 stroke
Gas engine 3/4" shaft

| Ref | No MS | No Comet | Description | Note | Qty |
|-----|-------------|-----------|-----------------|-------------|-----|
| 135 | CO-3607/119 | 3607 0119 | Hexagonal Screw | 3/4" Motor | 4 |
| 136 | CO-2819/4 | 2819 0004 | Spring Washer | Ø8,4x14,4x2 | 4 |
| 137 | CO-3016/35 | 3016 0035 | Flange | | 1 |
| 138 | CO-438/62 | 0438 0062 | Ball Bearing | Ø20x37x9 | 1 |
| 139 | CO-3020/19 | 3020 0019 | Inner Seeger | | 1 |
| 140 | CO-31/6 | 0031 0006 | Throughshaft | 3/4" Motor | 1 |
| 141 | CO-1602/16 | 1602 0016 | Key | 5x4,7x40 | 1 |
| 142 | CO-2811/37 | 2811 0037 | Washer | 5,3x10x1 | 3 |
| 143 | CO-604/46 | 0604 0046 | Nut | M5x6,8 | 3 |

Après 2004 / After 2004

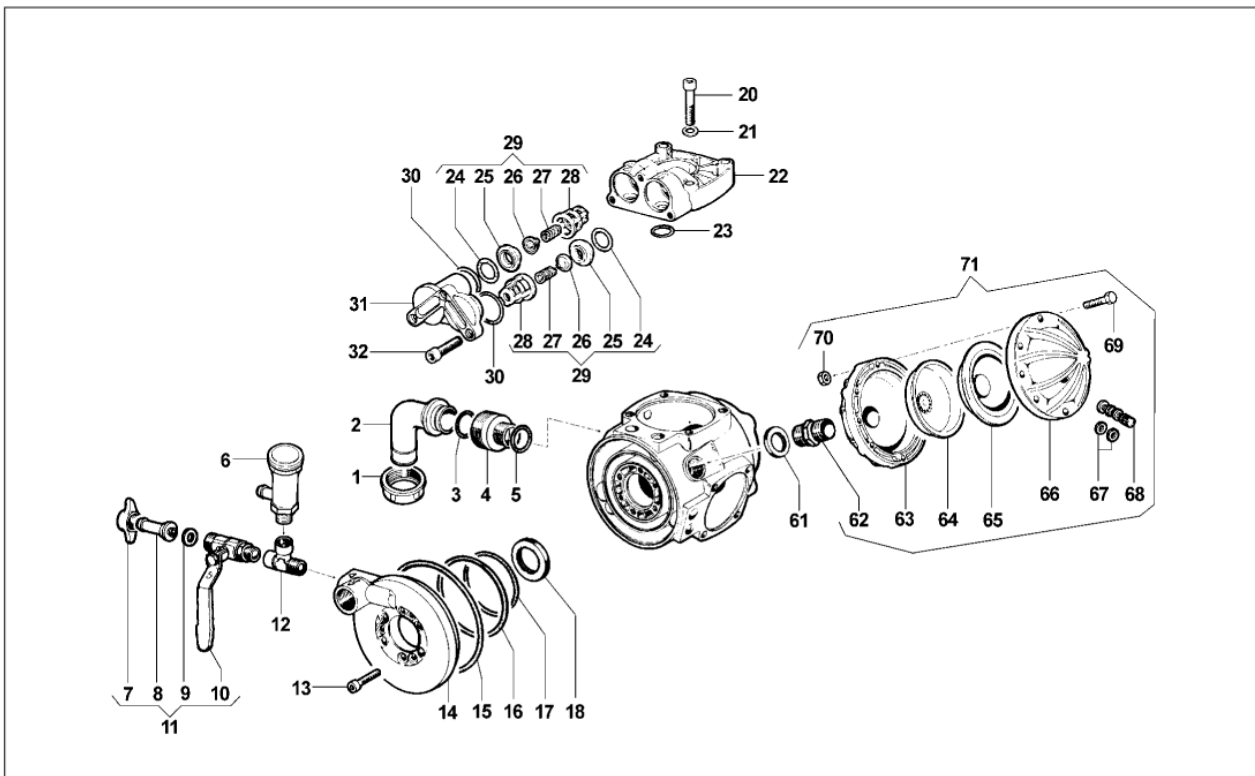
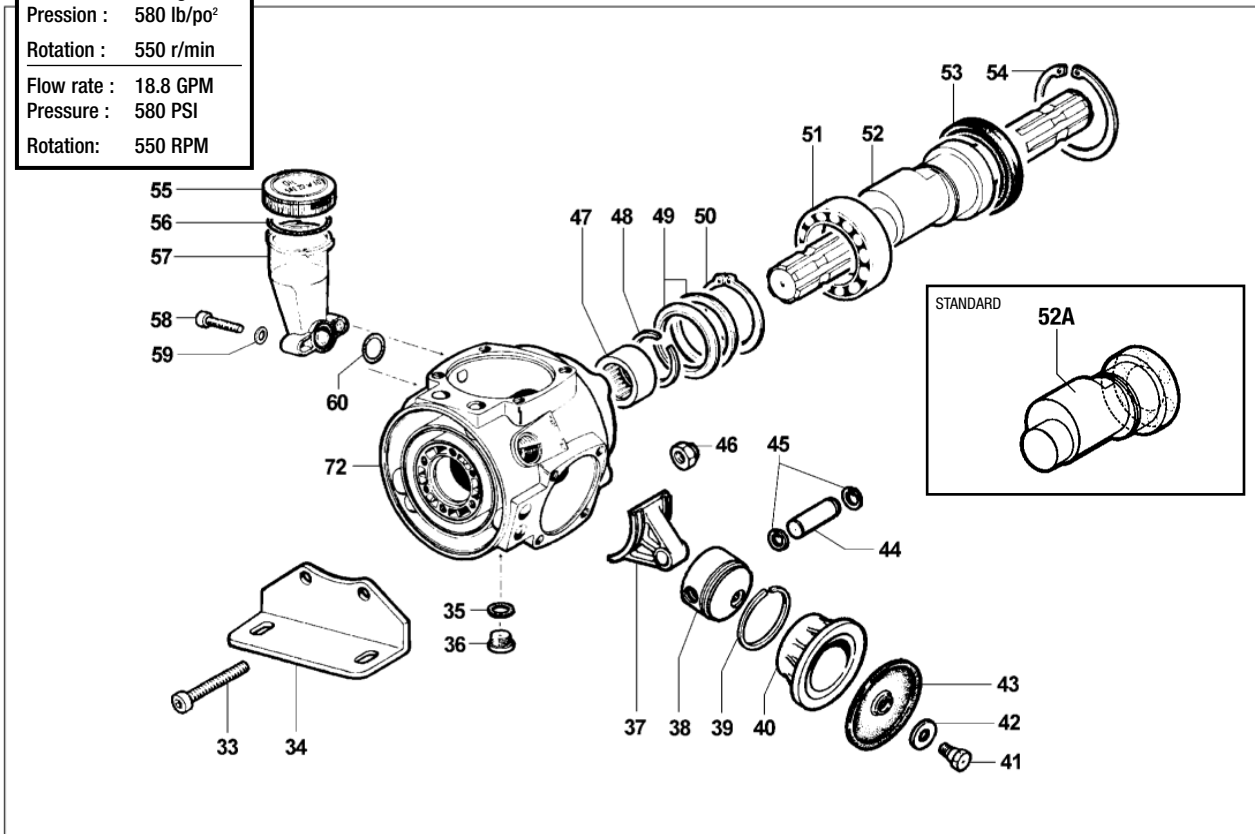
CO-1204/468
Régulateur assemblé / Regulation valve assembly



| Ref | No MS | No Comet | Description | Note | Qty |
|-----|-------------|-----------|----------------------------|----------------|-----|
| 1 | CO-3202/254 | 3202 0254 | Plug | | 1 |
| 2 | CO-1223/97 | 1223 0097 | Adjustable Nut | | 1 |
| 3 | CO-1209/44 | 1209 0044 | Gasket | Ø14x22x2 | 1 |
| 4 | CO-1600/76 | 1600 0076 | Lever | | 1 |
| 5 | CO-1802/43 | 1802 0043 | Spring (Wire Ø2,8) | Øe20x58 | 1 |
| 7 | CO-2426/24 | 2426 0024 | Guide | | 1 |
| 8 | CO-1210/72 | 1210 0072 | Viton® O-Ring | Ø2x6 | 1 |
| 9 | CO-1210/461 | 1210 0461 | O-Ring | Ø2x32 | 1 |
| 10 | CO-424/367 | 0424 0367 | Regulation Valve Body | | 1 |
| 11 | CO-1210/79 | 1210 0079 | O-Ring | Ø2,62x26,65 | 1 |
| 12 | CO-3600/9 | 3600 0009 | Pressure Valve | | 1 |
| 13 | CO-3009/133 | 3009 0133 | Valve Seat | | 1 |
| 14 | CO-1210/21 | 1210 0021 | O-Ring | Ø2,62x15,54 | 1 |
| 29 | CO-1200/59 | 1200 0059 | Wing Nut | G3/4 | 1 |
| 30 | CO-2800/102 | 2800 0102 | Straight Hose By-pass Tail | Ø13 X GAL G3/4 | 1 |
| 31 | CO-1210/36 | 1210 0036 | O-Ring | Ø2,62x13,1 | 1 |
| 32 | CO-3005/27 | 3005 0027 | Pin | 4x40 | 1 |
| 33 | CO-1202/51 | 1202 0051 | Hook | | 1 |
| 15 | CO-424/371 | 0424 0371 | Control Assembly Body | | 1 |
| 23 | CO-2803/372 | 2803 0372 | Hose Tail | | 1 |
| 24 | CO-2811/30 | 2811 0030 | Washer | Ø6,4x12,5x1,6 | 2 |
| 25 | CO-604/11 | 0604 0011 | Nut | M6xSP.8 | 2 |
| 26 | CO-1200/27 | 1200 0027 | Wing Nut | 1/2" GAS | 1 |
| 27 | CO-1209/13 | 1209 0013 | Gasket | Ø12x18x2 | 1 |
| 28 | CO-2802/20 | 2802 0020 | Delivery Hose Tail | Ø10x13 | 1 |
| 34 | CO-1816/33 | 1816 0033 | Pressure Gauge | 20 bar | 1 |
| 35 | CO-3607/152 | 3607 0152 | Hexagonal Screw | M6x60 | 2 |
| 22 | CO-1210/25 | 1210 0025 | O-Ring | Ø2,9x13,8 | 1 |

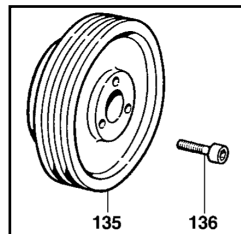
Avant 2004 voir p.1 / Before 2004 see p.1

Débit : 18.8 gal/min
 Pression : 580 lb/po²
 Rotation : 550 r/min
 Flow rate : 18.8 GPM
 Pressure : 580 PSI
 Rotation: 550 RPM



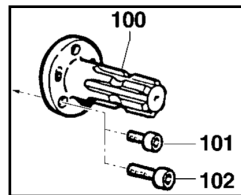
| Ref | No MS | No Comet | Description | Note | Qty |
|-----|-------------|-----------|--------------------------------|--------------|-----|
| 1 | CO-1200/11 | 1200 0011 | Wing Nut | M46x2 | 1 |
| 2 | CO-2801/9 | 2801 0009 | Suction Elbow Tail | Ø25x35 | 1 |
| 3 | CO-1210/34 | 1210 0034 | O-Ring | Ø3,53x28,17 | 1 |
| 4 | CO-2803/108 | 2803 0108 | Coupling | 1" GAS M46x2 | 1 |
| 5 | CO-1210/173 | 1210 0173 | O-Ring | Ø2,62x32,99 | 1 |
| 6 | CO-1219/34 | 1219 0034 | Safety Valve Assembly | 40 BAR | 1 |
| 7 | CO-1200/38 | 1200 0038 | Wing Nut | 1/2" GAS | 1 |
| 8 | CO-2802/18 | 2802 0018 | Delivery Hose Tail | Ø8x10 | 1 |
| 9 | CO-1209/13 | 1209 0013 | Gasket | Ø12x18x2 | 1 |
| 10 | CO-2826/30 | 2826 0030 | Tap | 3/8-1/2 GAS | 1 |
| 11 | CO-1214/14 | 1214 0014 | Complete Tap | | 1 |
| 12 | CO-2803/218 | 2803 0218 | "T" Coupling | | 1 |
| 13 | CO-3609/6 | 3609 0006 | Screw | M8x30 | 6 |
| 14 | CO-1009/95 | 1009 0095 | Manifold Flange | | 1 |
| 15 | CO-1210/349 | 1210 0349 | O-Ring | Ø3,53x142,5 | 1 |
| 16 | CO-1210/345 | 1210 0345 | O-Ring | Ø1,78x101,32 | 1 |
| 17 | CO-1210/347 | 1210 0347 | O-Ring | Ø1,78x75,92 | 1 |
| 18 | CO-19/83 | 0019 0083 | Oil Seal | Ø35x47x7 | 1 |
| 20 | CO-3609/78 | 3609 0078 | Screw | M10x70 | 12 |
| 21 | CO-2811/98 | 2811 0098 | Washer | Ø10,5x18x2 | 11 |
| 22 | CO-3218/103 | 3218 0103 | Pump Manifold | | 3 |
| 23 | CO-1210/47 | 1210 0047 | O-Ring | Ø2,62x22,22 | 6 |
| 24 | CO-1210/443 | 1210 0443 | O-Ring | Ø3,53x25,8 | 6 |
| 25 | CO-3009/115 | 3009 0115 | Suction/Delivery Valve Seat | | 6 |
| 26 | CO-3604/23 | 3604 0023 | Suction/Delivery Valve | | 6 |
| 27 | CO-1802/15 | 1802 0015 | Spring (Wire Ø0,8) | Øe11x17 | 6 |
| 28 | CO-1205/29 | 1205 0029 | Suction/Delivery Valve Cage | | 6 |
| 29 | CO-1220/35 | 1220 0035 | Suct./Delivery Valve Ass.y kit | | 6 |
| 30 | CO-1210/32 | 1210 0032 | O-Ring | Ø2,62x34,6 | 6 |
| 31 | CO-3202/197 | 3202 0197 | Plug | | 3 |
| 32 | CO-3609/6 | 3609 0006 | Screw | M8x30 | 9 |
| 33 | CO-3609/49 | 3609 0049 | Screw | M10x120 | 2 |
| 34 | CO-2400/66 | 2400 0066 | Pump Mounting Bracket | | 2 |
| 35 | CO-1210/44 | 1210 0044 | OR O-Ring | Ø2,62x 9,92 | 1 |
| 36 | CO-3200/10 | 3200 0010 | Plug | 1/4 GAS | 1 |
| 37 | CO-205/53 | 0205 0053 | Connecting Rod Assembly | | 1 |
| 38 | CO-2409/67 | 2409 0067 | Piston | Ø58 | 3 |

| Ref | No MS | No Comet | Description | Note | Qty |
|-----|-------------|-----------|----------------------------|--------------|-----|
| 39 | CO-20/8 | 0020 0008 | Compression Ring | Ø58x2x2,3 | 3 |
| 40 | CO-400/74 | 0400 0074 | Piston Sleeve | Ø58x8,9 | 3 |
| 41 | CO-3605/5 | 3605 0005 | Diaphragm Holder Screw | M12x1,5 | 3 |
| 42 | CO-602/10 | 0602 0010 | Disc | | 3 |
| 43 | CO-1800/88 | 1800 0088 | Diaphragm Buna | Ø100 | 3 |
| | CO-1800/96 | 1800 0096 | Diaphragm Desmo | | 3 |
| 44 | CO-3011/21 | 3011 0021 | Gudgeon Pin | Ø14x47,53 | |
| 45 | CO-3020/29 | 3020 0029 | Inner Seeger | Ø14 | 6 |
| 46 | CO-604/73 | 0604 0073 | Nut | M10x10 | 2 |
| 47 | CO-437/22 | 0437 0022 | Roller Bearing | Ø35x42x20 | 1 |
| 48 | CO-9/186 | 0009 0186 | Ring | | 1 |
| 49 | CO-10/21 | 0010 0021 | Connecting Rod Ring | Ø68x59x5,5 | 2 |
| 50 | CO-3019/1 | 3019 0001 | Outer Seeger | Ø55 | 1 |
| 51 | CO-438/1 | 0438 0001 | Ball Bearing | Ø55x90x18 | 1 |
| 52 | CO-1/320 | 0001 0320 | Throughshaft | 1"3/8 M-M | 1 |
| 52A | CO-1/322 | 0001 0322 | NON-Throughshaft | 6 Holes | 1 |
| 53 | CO-19/85 | 0019 0085 | Oil Seal | Ø70x90x10 | 1 |
| 54 | CO-3020/2 | 3020 0002 | Inner Seeger | Ø90 | 1 |
| 55 | CO-402/141 | 0402 0141 | Volum. Compensator Cover | | 1 |
| 56 | CO-1210/122 | 1210 0122 | O-Ring | Ø2,62x44,12 | 1 |
| 57 | CO-421/15 | 0421 0015 | Volumetric Compensator | | 1 |
| 58 | CO-3609/2 | 3609 0002 | Screw | M8x25 | 2 |
| 59 | CO-2811/4 | 2811 0004 | Washer | Ø8,4x14x1,6 | 2 |
| 60 | CO-1210/233 | 1210 0233 | O-Ring | Ø1,78x18,77 | 1 |
| 61 | CO-601/284 | 0601 0284 | Spacer | Ø36xØ27x3 | 1 |
| 62 | CO-2000/24 | 2000 0024 | Nipple | G3/4-G3/4 OT | 1 |
| 63 | CO-2/31 | 0002 0031 | Pressure Accumulator | | 1 |
| 64 | CO-360/5 | 0460 0005 | Diaphragm Support Cap | | 1 |
| 65 | CO-1800/34 | 1800 0034 | Diaphragm | | 1 |
| 66 | CO-3/27 | 0003 0027 | Pressure Accumulator | | 1 |
| 67 | CO-1209/33 | 1209 0033 | Gasket | Ø14x7,5x2 | 2 |
| 68 | CO-3610/3 | 3610 0003 | Air Valve | | 1 |
| 69 | CO-3607/25 | 3607 0025 | Hexagonal Screw | M8x45 | 8 |
| 70 | CO-604/15 | 0604 0015 | Nut | M8 | 8 |
| 71 | CO-1225/14 | 1225 0014 | Pressure Accumulator Ass.y | | 1 |
| 72 | CO-403/115 | 0403 0115 | Pump Crankcase | | 1 |



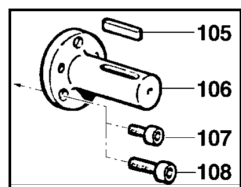
| Ref | No MS | No Comet | Description | Note | Qty |
|-----|-------------|-----------|-------------|------------|-----|
| 135 | CO-2424/16 | 2424 0016 | Pulley | 292mm - 3A | 1 |
| | CO-2424/35 | 2424 0035 | Pulley | 350mm - 3A | 1 |
| 136 | CO-3609/161 | 3609 0161 | Screw | M8x35 | 3 |

- CO-5001/43
Pulley Kit 292mm - 3 A Grooves
 - CO-5001/45
Pulley Kit 350mm - 3 A Grooves



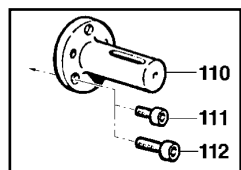
| Ref | No MS | No Comet | Description | Note | Qty |
|-----|-------------|-----------|-------------|--------|-----|
| 100 | CO-27/16 | 0027 0016 | Shaft | 1"3/8 | 1 |
| 101 | CO-3609/157 | 3609 0157 | Screw | M8x18 | 3 |
| 102 | CO-3609/26 | 3609 0026 | Screw | M10x18 | 3 |

- CO-5003/7
1"3/8 Cardan Kit - 6 Holes



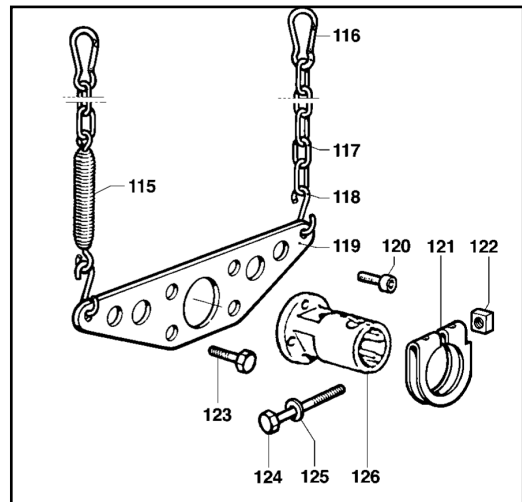
| Ref | No MS | No Comet | Description | Note | Qty |
|-----|-------------|-----------|-------------|-----------------|-----|
| 105 | CO-1602/18 | 1602 0018 | Key | 8x7x40 | 1 |
| 106 | CO-27/17 | 0027 0017 | Shaft | Ø30 Cil. / Cyl. | 1 |
| 107 | CO-3609/157 | 3609 0157 | Screw | M8x18 | 3 |
| 108 | CO-3609/26 | 3609 0026 | Screw | M10x18 | 3 |

- CO-5003/14
Ø30 Cylindric Cardan Kit



| Ref | No MS | No Comet | Description | Note | Qty |
|-----|-------------|-----------|-------------|----------------|-----|
| 110 | CO-27/23 | 0027 0023 | Shaft | 1" Cil. / Cyl. | 1 |
| 111 | CO-3609/157 | 3609 0157 | Screw | M8x18 | 3 |
| 112 | CO-3609/26 | 3609 0026 | Screw | M10x18 | 3 |

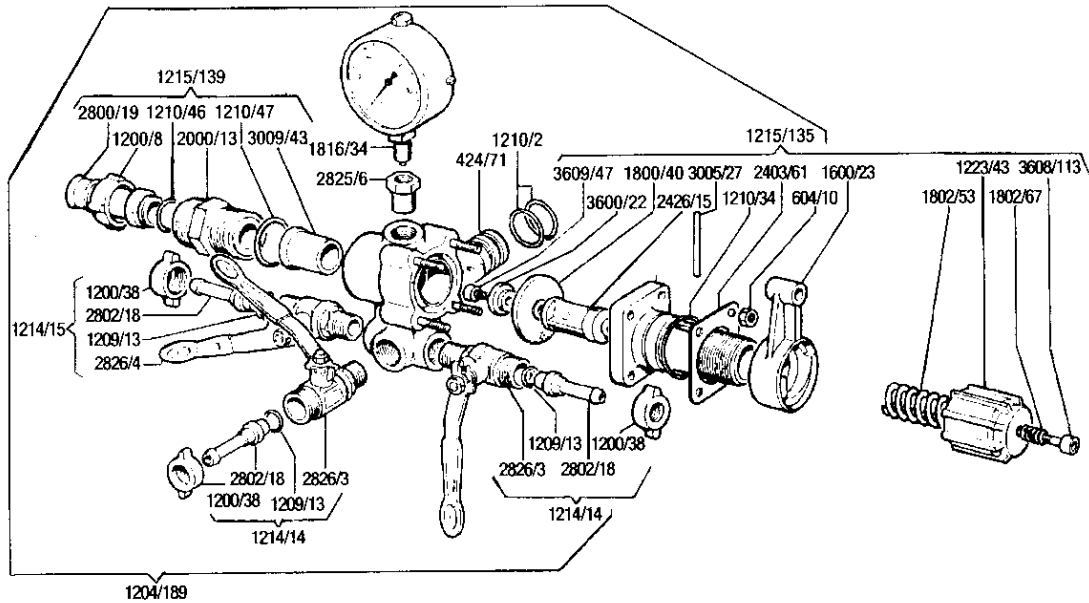
CO-5003/41
1" Cylindric Cardan Kit - 6 Holes



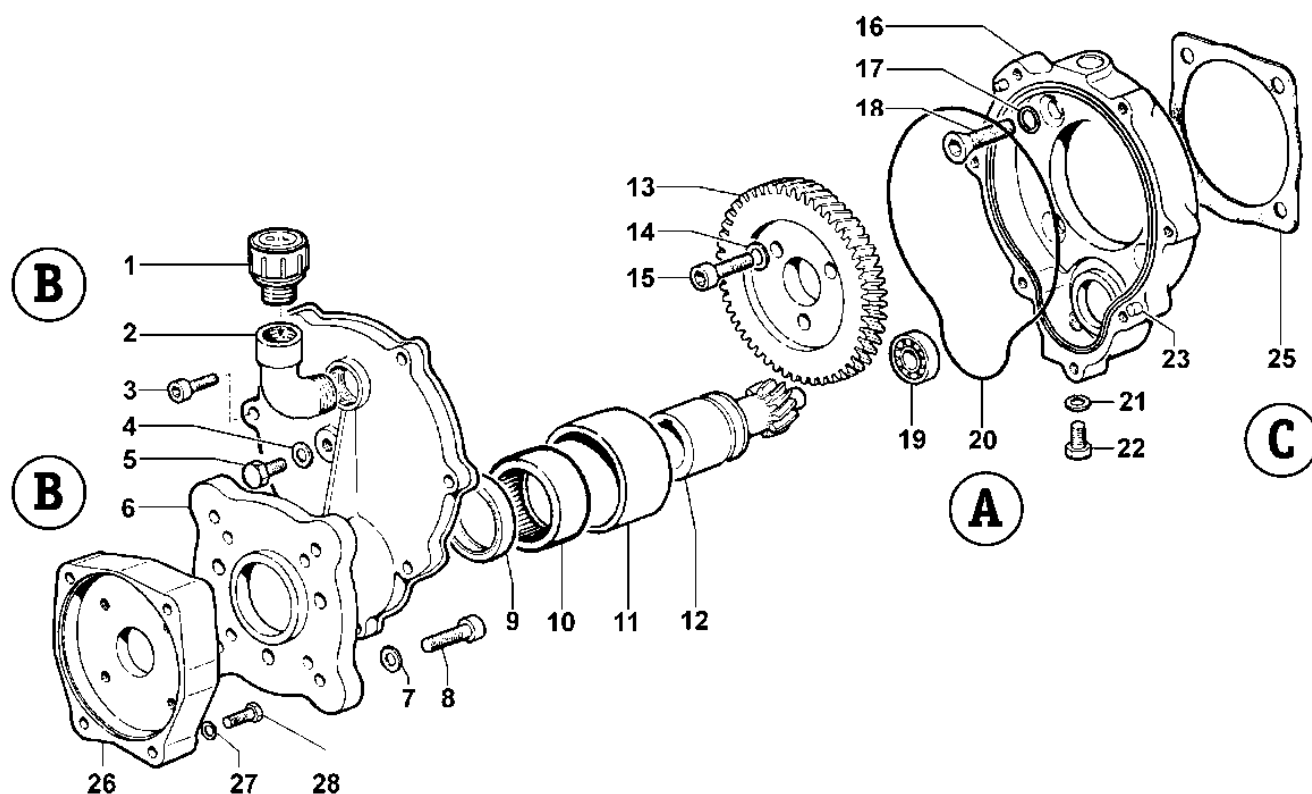
CO-5002/3
1" 3/8 torque arm and chain quick coupling

| Ref | No MS | No Comet | Description | Note | Qty |
|-----|-------------|-----------|-------------------------------|------------|-----|
| 115 | CO-1802/40 | 1802 0040 | Spring (Wire Ø2,5)+Hook | Øe20x100 | 1 |
| 116 | CO-1202/9 | 1202 0009 | Hook | | 2 |
| 117 | CO-465/1 | 0465 0001 | Chain | 500 mm | 2 |
| 118 | CO-1202/6 | 1202 0006 | Hook | Ø6 | 2 |
| 119 | CO-3221/3 | 3221 0003 | Torque Arm for Quick Coupling | | 1 |
| 120 | CO-3609/26 | 3609 0026 | Exagonal Screw | M10x18 | 3 |
| 121 | CO-417/5 | 0417 0005 | Collar | | 1 |
| 122 | CO-600/37 | 0600 0037 | Special Bolt | M12x6 | 1 |
| 123 | CO-3607/225 | 3607 0225 | Hexagonal Screw | M10x20 | 4 |
| 124 | CO-3607/115 | 3607 0115 | Hexagonal Screw | M12x75 | 1 |
| 125 | CO-2811/25 | 2811 0025 | Washer | Ø13x20x2,5 | 1 |
| 126 | CO-1407/1 | 1407 0001 | Quick Coupling | Ø1"3/8 F | 1 |

**Groupe de commande CO-1204018900 Control unit
(/ APS...)**



Ajouter le préfixe "CO" avant le # de pièce, ex : CO-1215135
Add the "CO" prefix before the part #, ex : CO-1215135



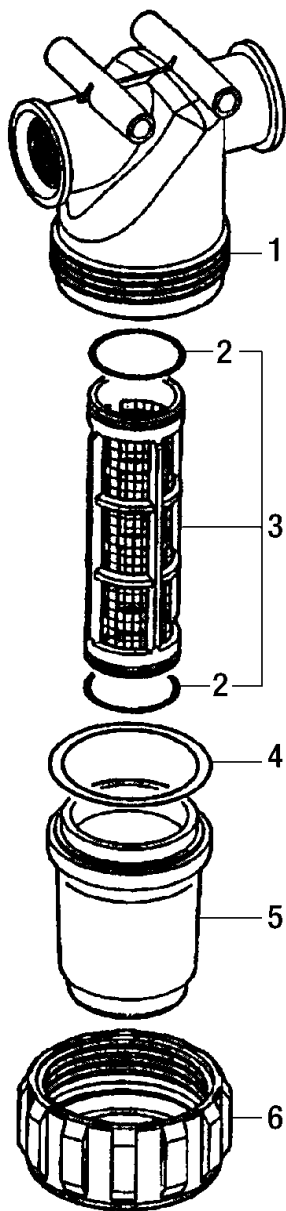
| REF | N° | DESCRIPTION | Q |
|-----|-------------|-----------------------------|---|
| 1 | CO-3200/82 | Oil Plug | 1 |
| 2 | CO-1211/23 | Elbow | 1 |
| 3 | CO-3609/41 | Screw | 7 |
| 4 | CO-2811/51 | Washer | 1 |
| 5 | CO-3607/214 | Hexagonal Screw | 1 |
| 6 | CO-3002/559 | Support | 1 |
| 7 | CO-2811/4 | Washer | 4 |
| 8 | CO-3609/2 | Screw | 4 |
| 9 | CO-19/52 | Oil Seal | 1 |
| 10 | CO-437/45 | Roller Bearing | 1 |
| 11 | CO-204/53 | Bushing | 1 |
| 12 | CO-2402/156 | Pinion Gear | 1 |
| 13 | CO-409/20 | External Gear | 1 |
| 14 | CO-2811/98 | Washer | 3 |
| 15 | CO-3609/22 | Screw | 3 |
| 16 | CO-3001/151 | Support | 1 |
| 17 | CO-1210/93 | O-Ring | 4 |
| 18 | CO-3621/6 | Special Screw (CO-5005/221) | 4 |
| | CO-3621/12 | Special Screw (CO-5005/212) | 4 |
| 19 | CO-448/6 | Roller Bearing | 1 |
| 20 | CO-1210/89 | O-Ring | 1 |
| 21 | CO-2811/51 | Washer | 1 |
| 22 | CO-3607/214 | Hexagonal Screw | 1 |
| 23 | CO-2818/5 | Pin | 2 |
| 25 | CO-1201/21 | Flat Gasket | 1 |
| 26 | CO-1009/48 | Flange | 1 |
| 27 | CO-2811/2 | Washer | 4 |
| 28 | CO-3607/164 | Hexagonal Screw | 4 |

- (A)** - DURING MOUNTING OF THE O-RING (POS. 20) BETWEEN SUPPORTS (POS. 6) AND (POS. 16) USE GREASE.
- (B)** - TO FILL WITH OIL, REMOVE CAP (POS. 1) AND THE SCREW (POS. 5). THE CORRECT OIL - LEVEL IS REACHED WHEN OIL GETS OUT FROM THE SCREW-CAP (POS. 5) WHILE POURING OIL INSIDE CAP (POS. 1).
- (C)** - DURING MOUNTING OF THE GEARBOX ON PUMP USE MASTIC **AREXONS 0019** (OUR CODE CO-1846/2) FOR FLAT GASKET (POS. 25).

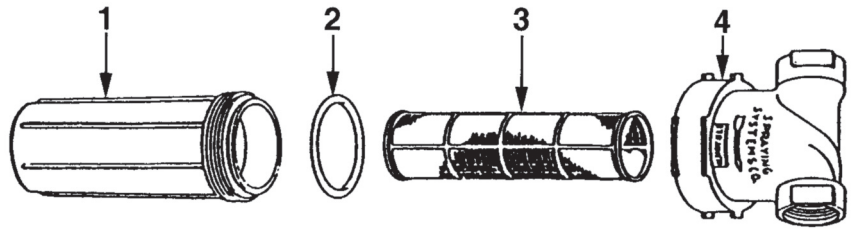
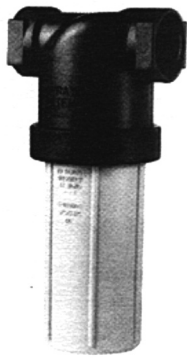
USE OIL **SAE 80 W 90** - 0,260 KG (9,5 ONCES)

THOSE INSTRUCTIONS ARE ONLY FOR SKILLED TECHNICIAN, IT MEANS A PERSON, WHO HAS RECEIVED APPROPRIATE TRAINING AND IS AUTHORISED TO CARRY OUT SPECIAL MAINTENANCE AND REPAIRS ON THE PUMP AND ON THE MACHINE WHICH INCORPORATES THE PUMP.

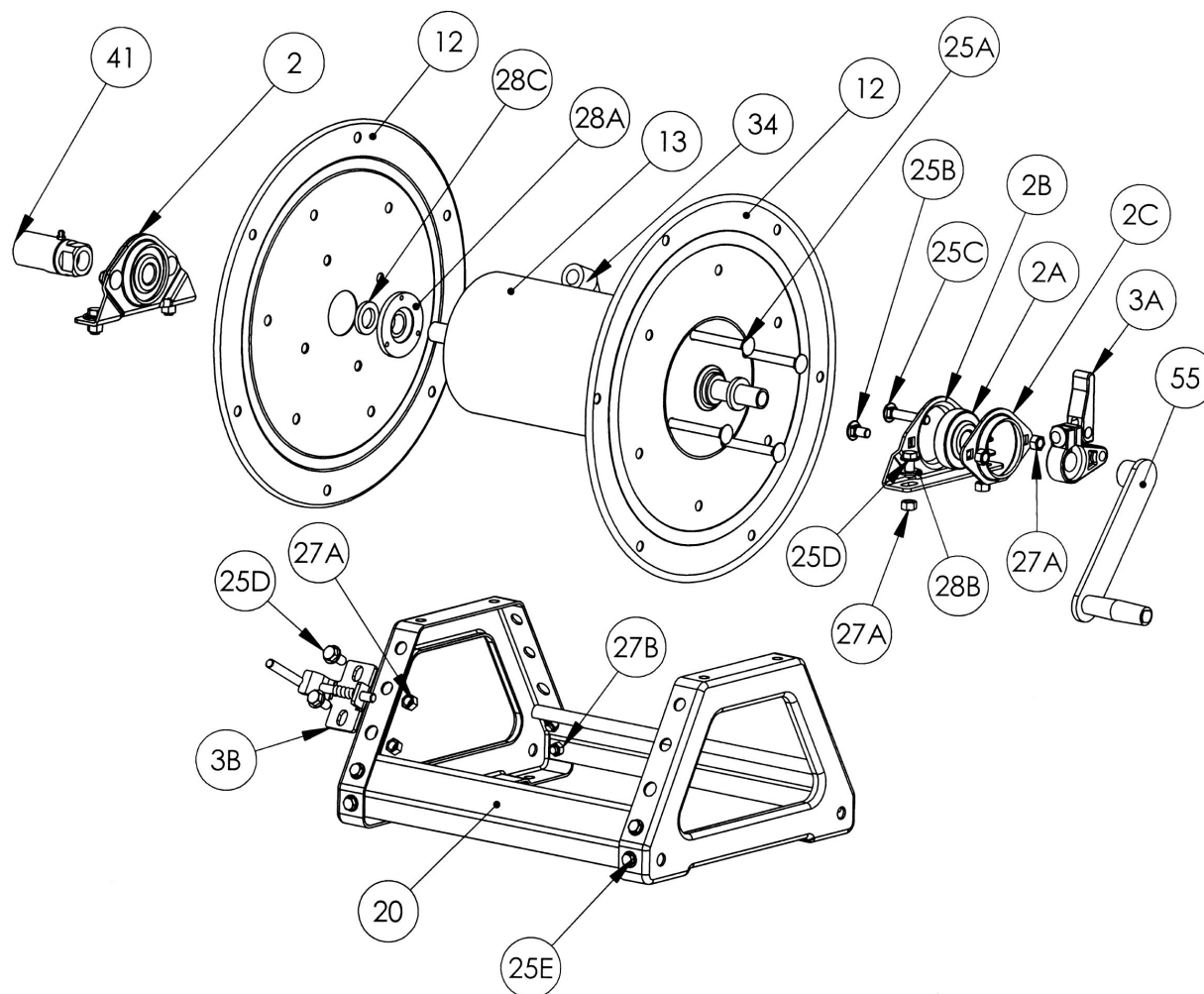
| | |
|------------|--------------------|
| MP-3244043 | 1 po - 50 mailles |
| MP-3244044 | 1 po - 100 mailles |
| MP-3244043 | 1" - 50 mesh |
| MP-3244044 | 1" - 100 mesh |



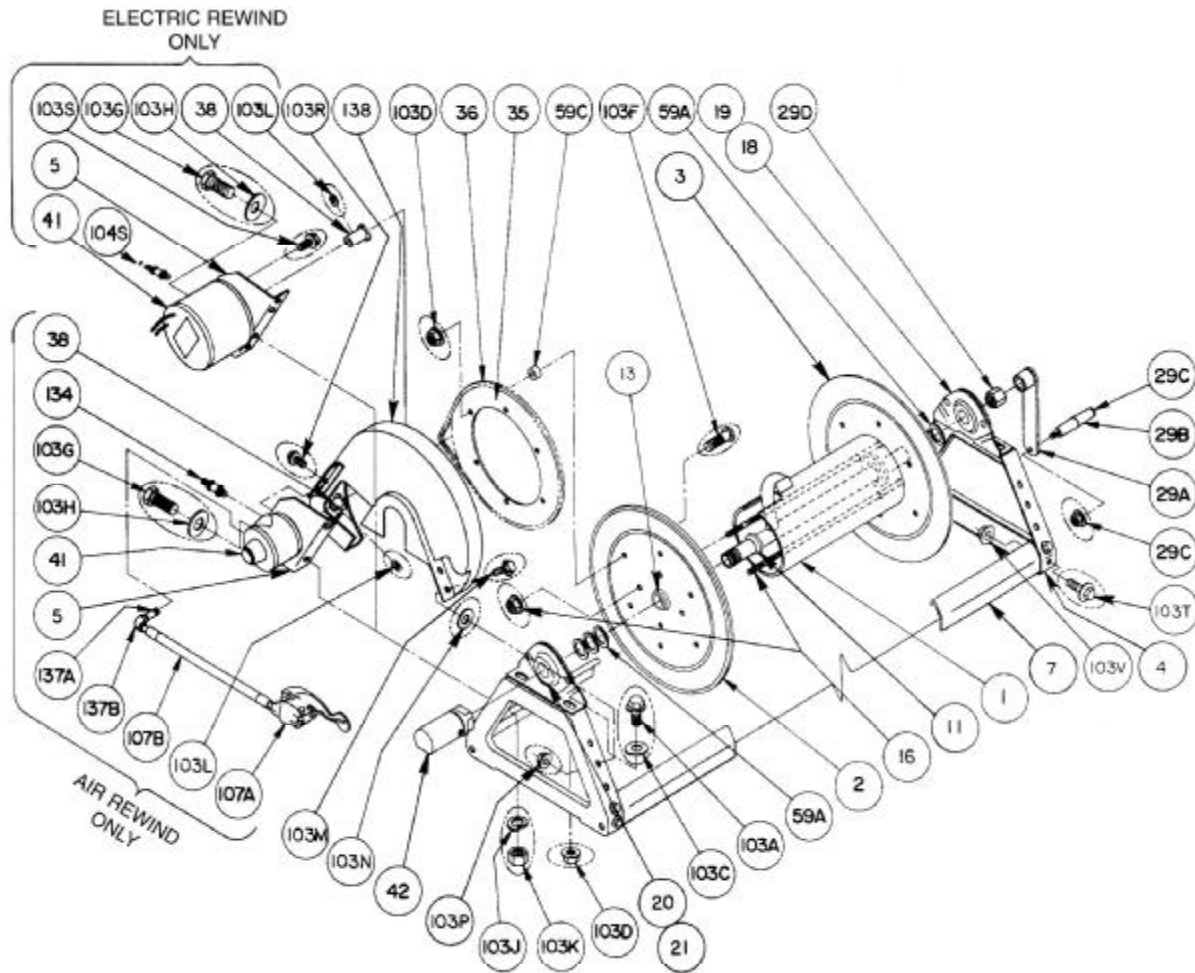
| REF N° | DESCRIPTION | Q |
|--------|--|---|
| 1 | MP-3244040010 Body | 1 |
| 2 | MP-322000050 O'ring see MP-G10051 | 2 |
| 3 | MP-323002030 White cartridge, inox 32 mesh | 1 |
| | MP-323003030 Blue cartridge, inox 50 mesh | 1 |
| | MP-3230035030 Grey cartridge, inox 80 mesh | 1 |
| | MP-323004030 Red cartridge, inox 100 mesh | 1 |
| | MP-323006030 Orange cartridge, inox 150 mesh | 1 |
| 4 | MP-G11017 O'ring | 1 |
| 5 | MP-3224000020 Filter bowl | 1 |
| 6 | MP-3224000050 Nut | 1 |



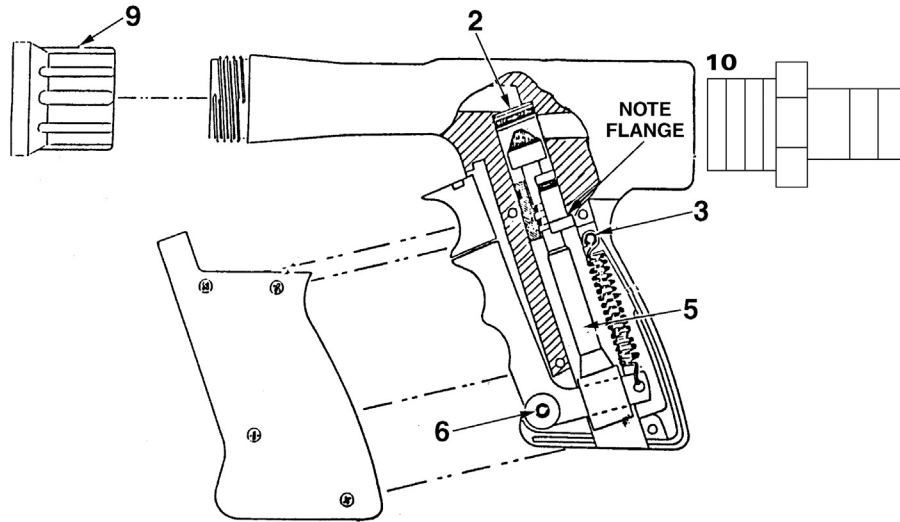
| REF N° | DESCRIPTION | Q |
|--------|--|---|
| 1 | JB-12288NY Nylon bowl | 1 |
| 2 | JB-12291BU Seal | 1 |
| 3 | JB-CP159411 16 mesh screen, grey | 1 |
| | JB-CP159412 30 mesh screen, yellow | 1 |
| | JB-CP159413 50 mesh screen, red | 1 |
| | JB-CP15914 80 mesh screen, blue | 1 |
| | BJ-LST15100 100 mesh screen | |
| | BJ-LST15200 200 mesh screen | |
| 4 | JB-15016114NY 1 1/4" NPT strainer head | 1 |
| | JB-15016112NY 1 1/2" NPT strainer head | 1 |



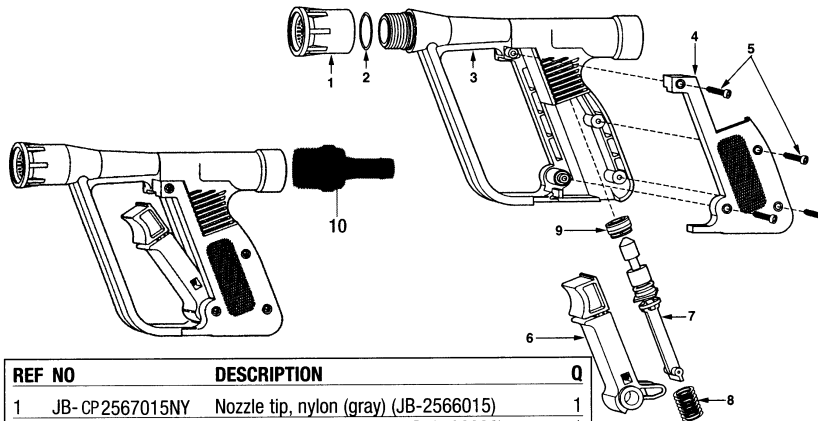
| REF | N° | DESCRIPTION | Q |
|-----------|---------------|---|--------|
| 2 | HR-99021200 | 1/2" Self Aligning Bearing Complete | 2 |
| 2A | HR-99021300 | 1/2" Bearing Insert | 2 |
| 2B | HR-99022900 | Pillow Block (E-coated) | 2 |
| 2C | HR-99022800 | Bearing Holder (E-coated) | 2 |
| 3A | HR-99470130 | Cam Lever Drag Brake Kit (including hardware) | 1 |
| 3B | HR-99650030 | Pinlock, (Standard) | 1 |
| 12 | HR-99030516 | Disc, 16-1/2" Diameter | 2 |
| 13 | HR-99057112 | Drum, 6" Dia | 1 |
| 20 | HR-99081000 | Complete Frame Assy. (fully assembled) | 1 |
| 25A | Specify Model | 3/8"-16 Carriage Bolt w/Nut | 4 |
| 25B | HR-99040201 | 3/8"-16 x 3/4" Carriage Bolt | 3 |
| 25C | HR-99040206 | 3/8"-16 x 2" Carriage Bolt | 1 |
| 25D | HR-99042201 | 3/8"-16 x 3/4" Spinlock Bolt | 6 |
| 25E | HR-99041159 | 5/16"-18 x 5/8" Lg Hex Flanged Bolt | 8 |
| 27A | HR-99046200 | 3/8"-16 Spinlock Nut | 14 |
| 27B | HR-99045602 | 5/16"-18 Top Lock Flanged Nut | 8 |
| 28A | HR-99650040 | Disc Washer | 2 |
| 28B | HR-99540007 | 3/8" Flat Washer | 4 |
| 28C | HR-99540020 | 1/2" Hub Spacer Washer | Varies |
| 34 | HR-99010610 | 1/2" Hub Assy., 1/2" FIPT Outlet Riser | 1 |
| 41 | HR-99278541 | 1/2" 90° FxF Super Swivel Joint | 1 |
| 55 | HR-99140021 | Hand Crank Complete (includes hardware) | 1 |
| Not Shown | HR-99140505 | Plastic Crank Handle Only w/ bolt & nut | 1 |



| REF | N° | DESCRIPTION | Q | REF | N° | DESCRIPTION | Q |
|------|---------------|--|---|--|-------------|--------------------------------------|---|
| 1 | HR-99057112 | Drum, 6" Alum. Tubing | 1 | 103P | HR-99046000 | 1/4" - 20 Spinlock Nut | 2 |
| 2 | HR-99030516 | 16-1/2" Dia. E-Coated Disc (Front) | 1 | 103R | HR-99041070 | 1/4" - 20 x 1/2" Self Tapping Screw | 2 |
| 3 | HR-99030516 | 16-1/2" Dia. E-Coated Disc (Back) | 1 | 103T | HR-99041159 | 5/16"-18 x 5/8" Lg Hex Flanged Bolt | 8 |
| 4 | HR-99060011 | Pressed Frame | 2 | 103V | HR-99045602 | 5/16"-18 Top Lock Flanged Nut | 8 |
| 7 | HR-99076000 | Footstock | 2 | 138 | HR-99570030 | Plastic chain Guard | 1 |
| 11A | HR-99010610 | 1/2" Welded Pipe Hub Assy w/ 1/2" FNPT Riser - Series 1500 | 1 | OPTIONAL REMOVABLE REWIND CRANK | | | |
| 11B | HR-99011050 | 1/2" Pipe Hub Assy Series C1500 | 1 | 29A | HR-99140051 | Hand Crank | 1 |
| 13 | HR-99650040 | Disc Washer | 2 | 29B | HR-99140505 | Hand Crank Handle | 1 |
| 16 | Specify Model | 3/8" Carriage Bolt w/Nut | 4 | 29C | HR-99140511 | Hand Crank Handle Bolt w/Nut | 1 |
| 18 | HR-99021200 | 1/2" S.A. Bearing Complete (Back) | 1 | ELECTRIC | | | |
| 19 | HR-99021300 | 1/2" Brg. Insert (Back) | 1 | 5 | HR-99230006 | Motor Mounting Plate-Electric Motor | 1 |
| 20 | HR-99021200 | 1/2" S.A. Bearing Complete (Front) | 1 | 38 | HR-99101119 | 11T35 Spkt. 1-3/4" LG | 1 |
| 21 | HR-99021300 | 1/2" Bearing Only | 1 | 41 | HR-99150042 | Electric Motor (Specify Model) | 1 |
| 29D | HR-99650013 | 1/2" Pipe Cap | 1 | 103S | HR-99042159 | 5/16" - 18 x 5/8" Spinlock Bolt | 4 |
| 35 | HR-99101321 | 112T35 Disc Sprocket 13-3/8" Dia. | 1 | 104S | GR-822151 | Switch 12 V | 1 |
| 36 | HR-99120001 | #35 Chain | 1 | | GR-83280 | Switch rubber cap | 1 |
| 42 | HR-99278551 | 1/2" 90 Degree FxF Superswivel Joint (Series 1500 only) | 1 | AIR | | | |
| 59A | HR-99540020 | 1/2" Hub Spacer Washer | 4 | 5 | HR-99230013 | Motor Mounting Plate #4 Air Motor | 1 |
| 59B | HR-99650007 | Tension Brake Spacer | 1 | 38 | HR-99101015 | 9T35 Spkt. 1-3/4" LG | 1 |
| 59C | HR-99540015 | GH-239 Sprocket Spacer | 6 | 41 | HR-99181122 | 4AM Gast Air Motor | 1 |
| 103A | HR-99042201 | 3/8" - 16 x 3/4" Spin Lock Bolt | 3 | 103S | HR-99042058 | 1/4" - 20 x 1/2" Spinlock Bolt | 3 |
| 103C | HR-99540007 | 3/8" Flat Washer | 4 | 107A | HR-99190004 | #3420 Schrader Valve For #4 Air Mtr. | 1 |
| 103D | HR-99046200 | 3/8" - 16 Spin Lock Nut | 4 | 107B | HR-99190007 | 18" 1/4 x 1/4" Air Hose | 1 |
| 103F | HR-99049202 | 3/8" - 16 x 1" Button HD Cap Screw | 6 | 134 | HR-99190006 | Speed Control Muffler | 1 |
| 103G | HR-99041402 | 1/2" - 13 x 1" Hex HD Cap Screw | 2 | 137A | HR-99500012 | 1/4" x 1-1/2" Pipe Nipple | 1 |
| 103H | HR-99540008 | 1/2" Flat Washer | 2 | 137B | HR-99500013 | 1/4" 90 Degree Pipe Elbow | 1 |
| 103J | HR-99540030 | 1/2" Split Lock Washer | 2 | HYDRAULIC | | | |
| 103K | HR-99540036 | 1/2" - 13 Hex Nut | 2 | 5 | HR-99230013 | Motor Mounting Plate - MTE Motor | 1 |
| 103L | HR-99580002 | 1/4" - 20 Allen Set Screw w/Nylock Insert | 2 | 38 | HR-99101119 | 11T35 Spkt. 1-3/4" Long | 1 |
| 103M | HR-99042058 | 1/4" - 20 x 1/2" Spinlock Bolt | 2 | 41 | HR-99182825 | MTE Hydraulic Motor (Not Shown) | 1 |
| 103N | HR-99540005 | 1/4" Flat Washer | 2 | 103S | HR-99042103 | 5/16 - 18 x 1-1/4" Spinlock Bolt. | 4 |
| | | | | 103S | HR-99046100 | 5/16 - 18 Spinlock Nut (Not Shown) | 4 |

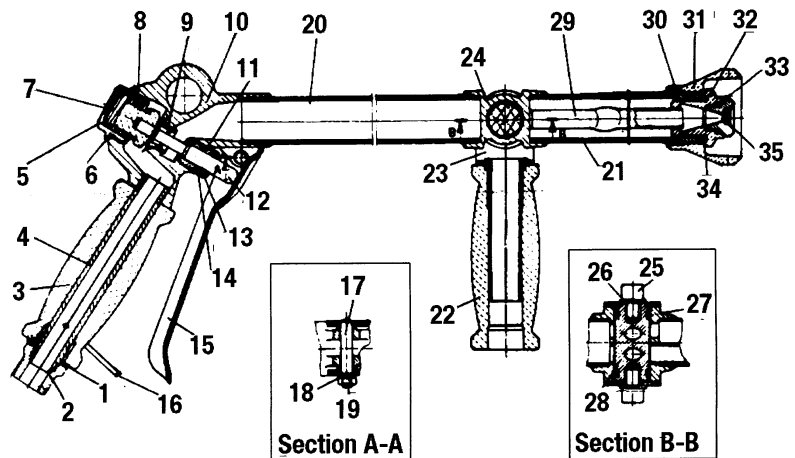


| REF | NO | DESCRIPTION | Q |
|-----|----------------|----------------------------|---|
| 2 | LE-007309 | Valve seat insert w/O-ring | 1 |
| 3 | * | Spring pin, 1/8" | 1 |
| 5 | LE-007642 | Internal assy | 1 |
| 6 | * | Trigger pin, 5/32" | 1 |
| 9 | JB-CP2567015NY | Nozzle (1.5 GPM, gray) | 1 |
| | JB-CP2567030NY | Nozzle (3 GPM, black) | 1 |
| | JB-CP2567040NY | Nozzle (4 GPM, std, red) | 1 |
| 10 | JB-2599034 | Swivel 1/2" HB | 1 |
| | LE-007455 | Valve seat tools | 2 |



| REF NO | DESCRIPTION | Q |
|--------|---|---|
| 1 | JB- CP2567015NY Nozzle tip, nylon (gray) (JB-2566015) | 1 |
| | JB- CP2567030NYB Nozzle tip, nylon (black) (JB-2566030) | 1 |
| | JB- CP2567040NY Nozzle tip, nylon (red) (JB-2566040) | 1 |
| 2* | JB-CP7717222VI O-ring, viton | 1 |
| 3 | JB-CP2566134NYB Body, nylon (black), 3/4"NPT (F) (JB-25660--) | 1 |
| 4 | JB-CP25662NYB Cover, nylon (black) | 1 |
| 5 | JB-CP25676916IZP #8 plastite screw, steel-zinc plated | 4 |
| 6 | JB-25675 Trigger sub-assy, nylon w/type 302 s.s. spring | 1 |
| 7* | JB-25665 Stem sub-assy, nylon, polypropylene and viton | 1 |
| 8 | JB-CP25671302SS Spring, type 302 SS | 1 |
| 9* | JB-25663 Seating sub-assy, polyprop. w/ viton O-ring | 1 |
| | JB-256600 Lawn spray gun (less nozzle tip), 3/4"NPT (F) | 1 |
| | JB-2566015 Lawn spray gun, 1.5 GPM | 1 |
| | JB-2566030 Lawn spray gun, 3.0 GPM | 1 |
| | JB-2566040 Lawn spray gun, 4.0 GPM | 1 |
| 10 | JB-2599034 Swivel | 1 |
| | JB- AB25660 Spare parts kit (incl. items marked with *) | |

| REF NO | DESCRIPTION | Q |
|--------|--|---|
| 1 | JB-9920232 Washer | 1 |
| 2 | JB-99200230 Inlet port | 1 |
| 3 | JB-99200193 Hand grip | 1 |
| 4 | JB-99200229 Tube | 1 |
| 5 | JB-99200231 Plug | 1 |
| 6 | JB-99203100 O-ring | 1 |
| 7 | JB-99200233 Spring | 1 |
| 8 | JB-9920240 Poppet | 1 |
| 9 | JB-99200129 Seat | 1 |
| 10 | JB-9920245B Body | 1 |
| 11 | JB-99202050 O-ring | 1 |
| 12 | JB-9920239 Plunger | 1 |
| 13 | JB-9920109 O-ring | 1 |
| 14 | JB-9920241 Guide | 1 |
| 15 | JB-9920246 Trigger | 1 |
| 16 | JB-9920245C Locking clip | 1 |
| 17 | JB-9920194 Pin | 1 |
| 18 | JB-99201751 Washer | 1 |
| 19 | JB-9920558768 Nut | 1 |
| 20 | JB-9920243 Rear barrel, Model-0010 | 1 |
| | JB-9920413 Rear barrel, Model-0011 | 1 |
| 21 | JB-9920244 Front barrel, Model-0010 | 1 |
| | JB-9920412 Front barrel, Model-0011 | 1 |
| 22 | JB-99200192 Front grip | 1 |
| 23 | JB-9920247 Bracket | 1 |
| 24 | JB-9920235 Regulator body, Model-0010 | 1 |
| | JB-9920411 Regulator body, Model-0011 | 1 |
| 25 | JB-99205931 Bolt | 2 |
| 26 | JB-99201751 Washer | 2 |
| 27 | JB-9920119 O-ring see JB-903835001 | 2 |
| 28 | JB-9920237 Regulator | 1 |
| 29 | JB-9920238 Inner barrel, Model-0010 | 1 |
| | JB-9920410 Inner barrel, Model-0011 | 1 |
| 30 | JB-9920373 Outlet port, Model-0010 | 1 |
| | JB-9920409 Outlet port, Model-0011 | 1 |
| 31 | JB-9920183 Shroud, Model-0010 | 1 |
| | JB-9920408 Shroud, Model-0011 | 1 |
| 32 | JB-99200158 Nozzle retainer, Model-0010 | 1 |
| | JB-9920407 Nozzle retainer, Model-0011 | 1 |
| 33 | JB-9920115 O-ring | 1 |
| 34 | JB-9920124 O-ring | 1 |
| 35 | JB-3385---- Nozzles 2300,3000, 3500,4000,4500, 5000,5500,6000,7000 | 1 |



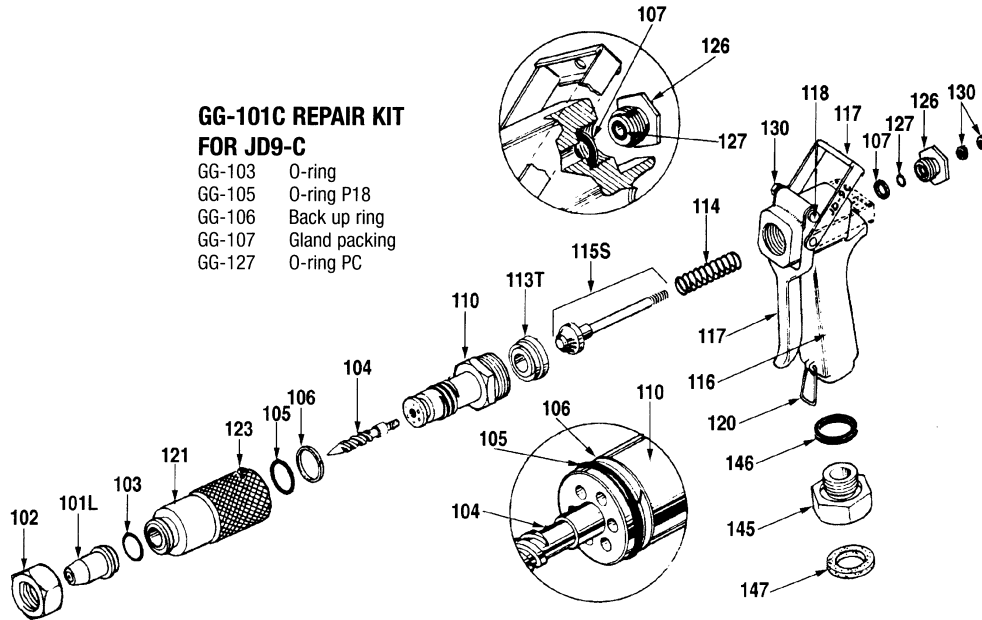
Repair kit No. JB-9920KIT10/11 consists of the following : No. JB-9920240 Poppet, JB-9920-129 Seat, JB-99203100 O-ring, JB-99202050 O-ring, JB-9920109 O-ring, JB-9920115 O-ring, JB-9920124 O-ring, and two JB-9920119 O-rings.

| Hypro Part Number | Orifice Diameter in mm | Equivalent Nozzle # | Pressure in PSI** Performance | 200 PSI** Setting | | 350 PSI** Setting | | 500 PSI** Setting | | 600 PSI** Setting | | 650 PSI** Setting | | 700 PSI** Setting | | 850 PSI** Setting | |
|-------------------|------------------------|---------------------|---|-------------------|----------|-------------------|----------|-------------------|----------|-------------------|----------|-------------------|----------|-------------------|----------|-------------------|----------|
| | | | | Cone | Straight | Cone | Straight | Cone | Straight | Cone | Straight | Cone | Straight | Cone | Straight | Cone | Straight |
| JB-33812300 | 2.3 | 14 | Capacity in US/GPM *Max. throw in Feet | 2.1 | 2.7 | 2.7 | 3.7 | 3.4 | 4.5 | 3.8 | 4.9 | 3.8 | 5 | 3.9 | 5.1 | 4.2 | 5.8 |
| JB-33813000 | 3.0 | 25 | Capacity in US GPM *Max. throw in Feet | 2.9 | 4.6 | 3.7 | 6.3 | 4.8 | 7.5 | 5.2 | 8.4 | 5.3 | 8.5 | 5.4 | 8.6 | 6 | 9.6 |
| JB-33813500 | 3.5 | 30 | Capacity in US/GPM *Max. throw in Feet | 5.8 | 6 | 7.9 | 8.2 | 9.6 | 9.9 | 10.7 | 11.1 | 11 | 11.3 | 11.2 | 11.6 | 12.4 | 12.8 |
| JB-33814000 | 4.0 | 40 | Capacity in US GPM *Max. throw in Feet | 7 | 7.3 | 9.6 | 9.9 | 11.6 | 12 | 12.9 | 13.5 | 13.2 | 13.8 | 13.6 | 14.1 | 15 | 15.6 |
| JB-33814500 | 4.5 | 50 | Capacity in US GPM *Max throw in Feet | 8.2 | 8.9 | 11.1 | 12 | 13.4 | 14.5 | 15 | 16.3 | 15.4 | 16.6 | 15.7 | 17 | 17.4 | 18.9 |
| JB-33855000 | 5.0 | 70 | Capacity in US GPM *Max throw in Feet | 9.8 | 10.2 | 13.3 | 13.8 | 16 | 16.7 | 18 | 18.7 | 18.4 | 19.1 | 18.9 | 19.5 | 20.8 | 21.6 |
| JB-33855500 | 5.5 | 80 | Capacity in US GPM *Max. throw in Feet | 10.7 | 11.5 | 14.4 | 15.6 | 17.4 | 18.8 | 19.6 | 21 | 20 | 21.5 | 20.4 | 22 | 22.6 | 24.4 |
| JB-33856000 | 6.0 | 90 | Capacity in US GPM *Max. throw in Feet | 11.5 | 12.6 | 15.6 | 17.1 | 18.8 | 20.6 | 21 | 23.2 | 21.5 | 23.7 | 22 | 24.2 | 24.4 | 26.9 |
| JB-33857000 | 7.0 | 100 | Capacity in US GPM *Max. throw in Feet | 11.5 | 13.5 | 15.6 | 18.4 | 18.8 | 22.2 | 21 | 25 | 21.5 | 25.4 | 22 | 26 | 24.4 | 29 |

*Figures shown are guidelines for vertical throw
 **Pressures based on relief valve settings at straight throw

GG-101C REPAIR KIT FOR JD9-C

- GG-103 O-ring
- GG-105 O-ring P18
- GG-106 Back up ring
- GG-107 Gland packing
- GG-127 O-ring PC

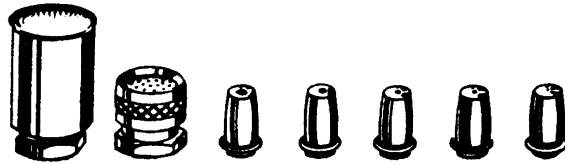


| HIGH PRESSURE SPRAY GUN MODEL JD9-C | | |
|-------------------------------------|-----------------------|---|
| NO | DESCRIPTION | Q |
| GG-101L | Nozzle tip & retainer | 1 |
| GG-102 | Cap | 1 |
| GG-103 | O-ring | 1 |
| GG-104 | Whirler | 1 |
| GG-105 | O-ring P18 | 1 |
| GG-106 | Back up ring | 1 |
| GG-107 | Gland packing | 1 |
| GG-110 | Adjuster body | 1 |
| GG-113T | Teflon valve seat | 1 |
| GG-114 | Valve spring | 1 |
| GG-115S | Stainless steel valve | 1 |
| GG-116 | Grip | 1 |
| GG-117 | Trigger assembly | 1 |
| GG-118 | Bolt | 1 |
| GG-120 | Stopper clip | 1 |
| GG-121 | Adjuster nut (barrel) | 1 |
| GG-123 | Screw | 1 |
| GG-126 | Gland | 1 |
| GG-127 | O-ring P6 | 1 |
| GG-130 | Nut M6 | 3 |
| GG-145 | 3/4 Garden coupling | 1 |
| GG-146 | Packing | 1 |
| GG-147 | Garden hose washer | 1 |

Various tips and flooding nozzles are available for the JD9-C Spray Gun. The gun regularly comes with a GG-101L large tip which has been the main tip used. But other applications dictate gallons per minute needed, thus the other sizes. The Tips are all the same except for the size of the hole essentially in the hardened insert. The spray pattern from solid stream to fan will remain the same.

To assemble, unscrew the cap # GG-102, keeping the O-ring # GG-103 for reuse, and replace tip.

Two flooding (shower)nozzles are available, again the gallons per minute vary. The aluminum model costing less will not have the wear resistance of the stainless steel screen found in the GG-101FB brass nozzle. To assemble remove both the tip, cap and O-ring.



101-FA 101-FB 101-LX 101-L 101-M 101-S 101-SX

| NOZZLES AND TIPS APPROX. FLOW RATES | | |
|-------------------------------------|----------------|--|
| Part No. | Capacity - GPM | |
| GG-101SX | .3 - 1 | |
| GG-101S | 1 - 3 | |
| GG-101M | 2 - 5 | |
| GG-101L | 3 - 8 | |
| GG-101LX | 10 - 19 | |
| GG-101FB | 4 - 5 | |
| GG-101FA | 5 - 7 | |

Flow rates approximate as flow dependent upon pressure.
 Tips of chrome plated brass with stainless steel and hardened inserts.
 Flooding (shower) nozzles : GG-101FA of aluminum with brass bushing. GG-101FB of brass with stainless steel screen.



Distributor's Warranty

HONDA CANADA INC., 715 Milner Avenue, Toronto, Ontario for and on behalf of Honda Motor Co. Ltd., Tokyo, Japan, gives the following written warranty on each new General Purpose Engine manufactured by Honda Motor Co. Ltd., Japan, distributed in Canada by Honda Canada Inc. and sold as part of the original equipment of machinery or equipment when such machinery or equipment is manufactured in Canada. Whenever used herein, the word "Honda" refers to Honda Canada Inc. and/or Honda Motor Co. Ltd. as appropriate from the context.

HONDA WARRANTS THAT each new Honda General Purpose Engine will be free, under normal use and maintenance, from any defects in material or workmanship for the relevant warranty period set forth below. If any defects should be found in a Honda General Purpose Engine within the relevant warranty period, necessary repairs and replacements with a new part or the Honda equivalent shall be made at no cost to the consumer for parts and labour (except for labour charges due to the presence of an attachment), when Honda acknowledges that such defects are attributable to faulty material or workmanship at the time of manufacture.

WARRANTY PERIOD

Warranty coverage commences from the original date of sale or when the unit is first put into use as a demonstrator.

| MODEL | NON-COMMERCIAL | COMMERCIAL | RENTAL | CONCESSION |
|--|----------------|------------|-----------|------------|
| G / GV SERIES (G100) | 12 MONTHS | 12 MONTHS | 12 MONTHS | 3 MONTHS |
| GX / GXV (ALL) (EXCEPT AS NOTED UNDER 1) | 24 MONTHS | 24 MONTHS | 24 MONTHS | 3 MONTHS |
| (1) GX22, GX31, GXH50, GXV50 | 24 MONTHS | 12 MONTHS | 3 MONTHS | 3 MONTHS |
| GC AND GCV | 24 MONTHS | 3 MONTHS | 3 MONTHS | NONE |

NOTE: CONCESSION USE REFERS TO GO KARTS ETC.

THIS WARRANTY COVERS

- Any Honda General Purpose Engine purchased from a Honda general purpose engine dealer or distributor authorized to sell that product in Canada.
- Any factory installed part (except normal maintenance parts referred to in "THIS WARRANTY DOES NOT COVER"); and
- Any General Purpose Engine on which required maintenance services have been performed as prescribed in the Owner's Manual.

THIS WARRANTY DOES NOT COVER

- Any repairs required as a result of collision, accident, striking any object, racing, misuse or lack of required maintenance.
- Any repairs required as a result of any attachments, parts or devices installed by or repairs done by a party other than the Original Equipment Manufacturer or an authorized Honda Power Products dealer.
- Any Honda General Purpose Engine modified, altered, disassembled or remodelled.
- Normal maintenance services, including tightening of nuts, bolts and fittings and engine tune-up and the replacement of parts made in connection with normal maintenance services including filters, spark plugs and wires, fuses, belts, lubricants and other expendables susceptible to natural wear.

THE OWNER'S OBLIGATION

In order to maintain the validity of this DISTRIBUTOR'S WARRANTY, the required maintenance services as set forth in the Owner's Manual must be performed at the proper intervals and detailed receipts and records retained as proof.

TO OBTAIN WARRANTY SERVICE

You must take your Honda General Purpose Engine, at your expense, during normal service hours, to the authorized Honda Power Products dealer or the dealer designated by the manufacturer of the machinery or equipment powered by the Honda engine. If you are unable to obtain or are dissatisfied with the warranty service you receive, first contact the owner of the dealership involved; this should resolve the problem. If you require further assistance, contact Honda Canada Inc., attention Customer Relations Department.

HONDA CANADA INC.

715 MILNER AVENUE, TORONTO, ON M1B 2K8

TELEPHONE

FAX

TOLL FREE: 1-888-946-6329

TOLL FREE: 1-877-939-0909

TORONTO AREA: (416) 287-4776

REPLACEMENT PARTS WARRANTY

New genuine Honda replacement parts sold to a consumer or installed by an authorized Honda power equipment dealer which are not covered by the DISTRIBUTOR'S WARRANTY are warranted for a period of one year from date of purchase for normal use, or 3 months for rental or concession use provided, however, that this Replacement Parts Warranty does not apply to any replacement parts modified, used with, or installed on a power product for which the replacement parts were not intended. Electrical components that are not installed by the dealer (sold over the counter) are not covered by warranty.

ENTIRE WRITTEN WARRANTY

This DISTRIBUTOR'S WARRANTY is the only and the entire written warranty given by Honda for Honda General Purpose Engines. No dealer or his agent or employee is authorized to extend or enlarge on these warranties on behalf of Honda by any written or verbal statement or advertisement.

DISCLAIMER

To the extent the law permits, Honda disclaims any responsibility for loss of time or use of the General Purpose Engine, transportation or towing costs or any other indirect, incidental or consequential damage, inconvenience or commercial loss.

NOTICE TO CONSUMER

The provisions contained in these written warranties are not intended to limit, modify, take away from, disclaim or exclude any warranties set forth in or the operation of The Consumer Products Warranties Act, 1977 (Saskatchewan), The Consumer Product Warranty and Liability Act (New Brunswick), The Consumer Protection Act (Quebec), or any other similar provincial or federal legislation.

Garantie du distributeur

HONDA CANADA INC., située au 715 Milner Avenue, Scarborough, Ontario, pour et au nom de Honda Motor Co. Ltd., Tokyo, Japon, offre la garantie suivante sur chaque moteur à toutes fins neuf fabriqué par Honda Motor Co. Ltd., Japon, distribué au Canada par Honda Canada Inc., et vendu en tant que pièce d'origine d'un équipement lorsqu'un tel équipement est fabriqué au Canada. Aux fins des présentes, «Honda» signifie Honda Canada Inc. etc/ou Honda Motor Co. Ltd., selon le contexte.

HONDA GARANTIT QUE chaque moteur à toutes fins neuf Honda est exempt de défaut de fabrication et de vice de main-d'oeuvre dans des conditions normales d'utilisation et d'entretien, pendant la période garantie pertinente énoncée ci-dessous. Si un moteur à toutes fins Honda s'avère défectueux avant l'échéance de la période de garantie, Honda réparera ou remplacera les pièces nécessaires par des pièces Honda neuves ou leur équivalent, sans frais de la part du consommateur, pièces et main-d'oeuvre comprises (à l'exception des frais de main-d'oeuvre relatives à un accessoire), sous réserve que de telles déficiences soient attribuées par Honda à des défauts de fabrication ou à des vices de main-d'oeuvre.

PÉRIODE DE GARANTIE

La couverture de la garantie entre en vigueur à la date de vente originale ou lorsque l'unité est mise en service en tant que modèle de démonstration.

| MODÈLE | UTILISATION NON COMMERCIALE | UTILISATION COMMERCIALE | LOCATION/ | CONCESSION |
|--|-----------------------------|-------------------------|-----------|------------|
| SÉRIE G / GV (G100) | 12 MOIS | 12 MOIS | 12 MOIS | 3 MOIS |
| GX / GXV (TOUS) (EXCEPTÉ CEUX DE L'ARTICLE 1) | 24 MOIS | 24 MOIS | 24 MOIS | 3 MOIS |
| (1) GX22, GX31, GXH50 GXV50 | 24 MOIS | 12 MOIS | 3 MOIS | 3 MOIS |
| GC AND GCV | 24 MOIS | 3 MOIS | 3 MOIS | AUCUNE |

NOTA : UTILISATION PAR UNE CONCESSION SE RAPPORTE À GO KART, ETC.

CETTE GARANTIE S'APPLIQUE :

- à tout moteur à toutes fins Honda acheté au Canada d'un concessionnaire ou d'un distributeur autorisé de moteurs à toutes fins Honda ;
- à toute pièce installée à l'usine (à l'exception des pièces sujettes à un entretien régulier dont il est mentionné dans la section intitulée «CETTE GARANTIE NE S'APPLIQUE PAS», et ;
- à tout moteur à toutes fins sur lequel les services d'entretien périodiques ont été effectués, tel que prescrit dans le Manuel du propriétaire.

CETTE GARANTIE NE S'APPLIQUE PAS :

- aux réparations requises suite aux collisions, accidents, chocs de tout objet, course, usage abusif ou manque d'entretien ;
- aux réparations rendues nécessaires parce que l'installation ou la réparation des dispositifs, pièces ou accessoires ont été effectuées par une personne autre que le fabricant de l'équipement d'origine ou qu'un concessionnaire autorisé de produits mécaniques Honda ;
- à un moteur à toutes fins qui a été modifié, altéré, démonté ou transformé ;
- aux services d'entretien réguliers, y compris le serrage des boulons, écrous et raccords, la mise au point du moteur et le remplacement de pièces requises dans le cadre de l'entretien normal telles que filtres, bougies et fils, fusibles, courroies, lubrifiant et toutes les pièces sujettes à l'usure normale.

OBLIGATION DU PROPRIÉTAIRE

Afin de maintenir la validité de cette GARANTIE DU DISTRIBUTEUR, les services d'entretien requis tels qu'énoncés dans le Manuel du propriétaire doivent être effectués aux intervalles appropriés et les reçus détaillés et registres doivent être gardés en dossiers.

COMMENT BÉNÉFICIER DE CETTE GARANTIE

Vous devez apporter votre moteur à toutes fins Honda, à vos frais, pendant les heures normales de travail, chez le concessionnaire autorisé de produits mécaniques Honda où vous avez acheté ce produit ou chez le concessionnaire précisé par le fabricant de l'équipement propulsé par le moteur Honda. Si vous ne pouvez pas obtenir le service prescrit par la garantie ou en êtes insatisfait, prenez les mesures suivantes : communiquez d'abord avec le propriétaire de la concession concernée ; cela devrait suffire pour résoudre le problème. Si, toutefois, vous désirez de l'aide additionnelle, veuillez écrire au bureau Honda Canada Inc. de votre région à l'attention du Service des relations avec la clientèle aux adresses suivantes :

HONDA CANADA INC.
715 MILNER AVENUE, TORONTO, ON M1B 2K8

TELEPHONE : 1-888-946-6329
SANS FRAIS : SANS FRAIS : 1-877-939-0909
FAX : SECTEUR DE TORONTO: (416) 287-4776

GARANTIE DES PIÈCES DE RECHANGE

Les pièces de rechange neuves d'origine Honda, vendues à un consommateur et installées par un concessionnaire autorisé de produits mécaniques Honda, non couvertes aux termes de la GARANTIE DU DISTRIBUTEUR sont garanties pour une période d'un (1) an à compter de la date d'achat dans le cas de l'utilisation normale ou de trois (3) mois dans le cas de l'utilisation commerciale/la location ou dans une concession, sous réserve que cette garantie de pièces de rechange ne s'applique pas aux pièces de rechange modifiées, utilisées ou installées sur un produit mécanique pour lequel lesdites pièces de rechange n'étaient pas conçues. Les composantes électriques qui ne sont pas installées par le concessionnaire (vendues au comptoir) ne sont pas couvertes par une garantie.

EXCLUSION DE TOUTE AUTRE GARANTIE

La GARANTIE DU DISTRIBUTEUR est la seule et unique garantie écrite offerte par Honda sur les moteurs à toutes fins Honda. Aucun concessionnaire, agent ou employé n'est autorisé à prolonger ou augmenter cette garantie au nom de Honda par toute déclaration écrite ou verbale ou toute publicité.

DÉNÉGATION DE RESPONSABILITÉ

Dans la mesure autorisée par la loi, Honda se dégage de toute responsabilité découlant des pertes de temps ou d'utilisation du moteur à toutes fins, des coûts de transport ou de remorquage ou de tout autre dommage imprévu, direct ou consécutif, d'inconvénient ou de perte de revenus.

AVIS AU CONSOMMATEUR

Les stipulations contenues dans ces garanties écrites n'ont pas pour objet de limiter, modifier, annuler, nier ou exclure toute garantie énoncée dans «The Consumer Products Warranties Act, 1977» (Saskatchewan), «The Consumer Product Warranty and Liability Act» (Nouveau-Brunswick) et la «Loi sur la protection du consommateur» (Québec) ou toute autre loi provinciale ou fédérale similaire.

