

FEATURES

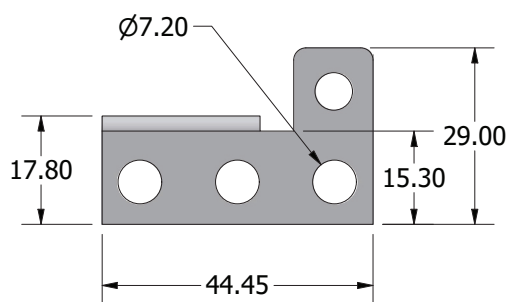
- 50.000 hours led life.
- 100-200 volt AC wide input voltage range.
- IP20-12V-2A.
- Short circuit, overload, high voltage protection.
- Operating temperature 0->40° moisture 20-95%
- 2X 0,75mm² cable cross section.
- 150cm cable lenght.
- 19" led lenght.

ATTENTION

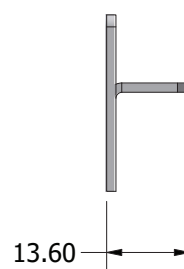
- **Dangerous voltage inside the device.**
- In case of failure please contact your authorized dealer.
- Please do not operate in direct sunlight and near heat sources.
- Inputs between 100-200V AC and 47-73Hz could be applied.



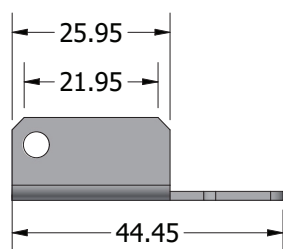
MR.AYK.XX



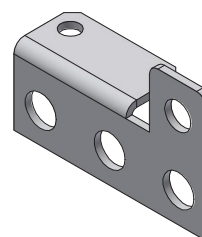
Front View



Side View



Top View



Front Isometric View