



USER MANUAL SMART BRACELET

Downloading the App

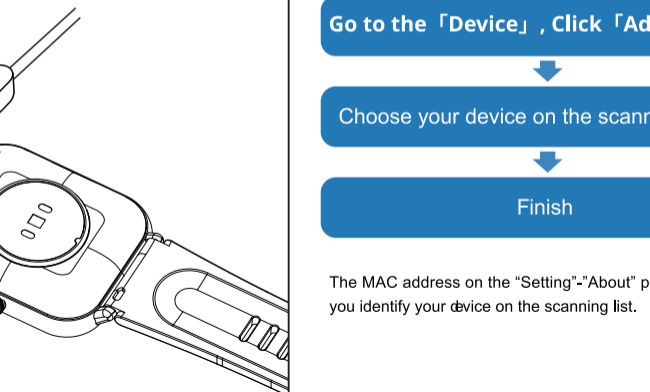
Scan the following QR code, download and install the App.



Scan QR Code and Download

Charging and Active

Charging the device to active before the first time using:
To charge your device, plug the charging cable into the adapter or USB port on your computer.



Pairing

Open the App and set up your profile

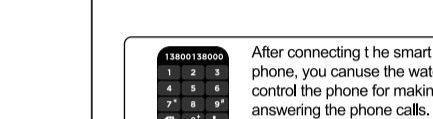
Go to the 「Device」, Click 「Add a Device」

Choose your device on the scanning list

Finish

The MAC address on the "Setting"- "About" page could help you identify your device on the scanning list.

Use the Touch Screen



Control Center
Swipe Down ↑ Swipe Up ↓



Menue
Swipe Left ← Swipe Right →



Heart Rate
Swipe Left ← Swipe Right →



Messages
Swipe Down ↑ Swipe Up ↓

Phone Call



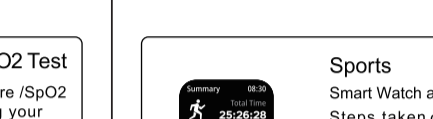
After connecting the smart Watch to the phone, you can use the watch to dial to control the phone for making calls and answering the phone calls. You can also view the call history of the watch. You need to keep the connection between the watch and the phone stable when using the Phone Call function.

Smart Watch Features



Heart Rate Test
The Smart Watch could record your heart rate all day. You also could tap on the page to start measuring heart rate.

Smart Watch Features



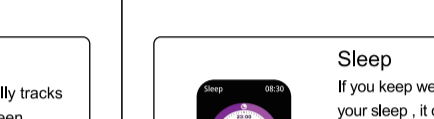
Blood Pressure /SpO2 Test
Tap on the blood pressure /SpO2 page, to start measuring your blood/SpO2. On the blood pressure/SpO2 page, It can show the blood pressure /SpO2 measured data of the last times.
show the blood pressure measured

Smart Watch Features



Period reminder
Click on the menstrual period interface, through the management cycle calendar, intelligently predict victory cycles. On the period reminder page, It can show the period reminder measured data of the last times.

Smart Watch Features



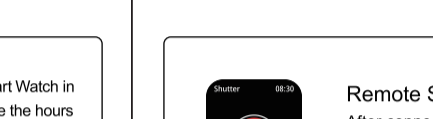
Sports
Smart Watch automatically tracks Steps taken on the screen. NOTE: Your movement stats reset to zero at midnight.

Smart Watch Features



Training
Tap the training icon on the menu to start a new training measure recording, there are 8 sport modes to be chosen. The last training recording will be shown on the training page.

Smart Watch Features



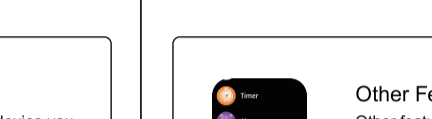
Sleep
If you keep wearing Smart Watch in your sleep, it can provide the hours slept and quality of sleep stats on both the screen and the APP. NOTE: Sleep stats reset to zero at 8:00 pm.

Smart Watch Features



Player Shutter
After connecting the device, you can remote control the music player on your phone.

Smart Watch Features



Remote Shutter
After connecting the device, you can remote control the camera on your phone.

Smart Watch Features



Messages Reminder
The device can sync incoming notifications from Twitter, Facebook, Whatsapp, Instagram etc. Recently 5 messages can be stored. Note: You can switch of/off the incoming notification in the APP.

Smart Watch Features



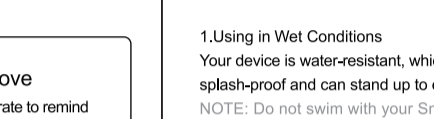
Other Features
Other features include stop watch, alarm, timer, brightness, mute on/off, theater mode, factory reset, power off and about.

Smart Watch Features



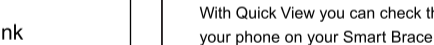
Weather
It could show the weather info of current and tomorrow on the weatherpage. Weather info is synced after connecting with the APP, it will not be updated after a long disconnected.

Smart Watch Features



Remind to Move
The device will vibrate to remind you to make a relax after 1 hour sitting. Note: You can switch on/off the feature in the APP.

Smart Watch Features



Remind to Drink
The smart watch will remind you "Time to Drink Some Water" at the planned drinking time. Note: You can set the feature in the APP.

Getting to Know Your Device

1. Using in Wet Conditions
Your device is water-resistant, which means it is rain-proof and splash-proof and can stand up to even the sweatiest workout. NOTE: Do not swim with your Smart Bracelet. We also don't recommend showering with your wristband; though the water won't hurt the device, wearing it 24/7 does not give your skin a chance to breathe. Whenever you get your bracelet wet, dry it thoroughly before putting it back on.

2. Using Quick View
With Quick View you can check the time or the message from your phone on your Smart Bracelet without tapping. Just turn your wrist towards you and the time screen will appear for a few seconds.

General Info & Specifications

1. Environmental Conditions
Operating temperature: 14F to 122°F (-10°C to 50°C)
Non-operating temperature: -4F to 140F (-20C to 60°C)

2. Size
Fits a wrist between 5.5 and 7.7 inches in circumference.

3. Disposal and Recycling
Please kindly be aware that it is the consumer's responsibility to properly dispose and recycle Smart Bracelet and accompanying components. Do not dispose of Smart Bracelet with common household waste, the Smart Bracelet unit is considered electronic waste and should be disposed of at your local electronic equipment collection facility. For more information, please contact your local electronic equipment waste management authority or the retailer where you bought the product.