

Smart watch for children

INSTRUCTION MANUAL



Please read this instruction manual carefully before using this device

GETTING STARTED

Please note that this device needs a active rca' d Micro sim card, preloaded witch airtime and data for the watch to function correctly GPRS function and caller identity needs to be activated on the sim card

INSERTING SIM CARD

- Unscrew the sim card slot on the left hand side of the watch (use the screwdriver supplied) please be careful not to lose the rubber seal.
- Insert SIM card into the smart watch with metal chip facing upwards and the nick facing inwards, please make sure watch is powered off.
- Use diagram below for correct sim card usage -uses MICRO SIM



CHARGING YOUR WATCH

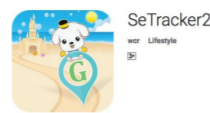
- Use the USB charging cable supplied -(NO AC PLUG SUPPLIED)
- Choose a 5v1A Plug to charge your watch
- Charging time should not exceed 4 hours.

INSTALLING APPLICATION ON MOBILE PHONE

- Please note this application supports Android IOS
- Please scan the below QR code to install the application.
- Alternatively go to your app store and search for - **SeTracker2**



App QR Code



App from app store/Playstore

- Install application on your mobile phone to track your kids

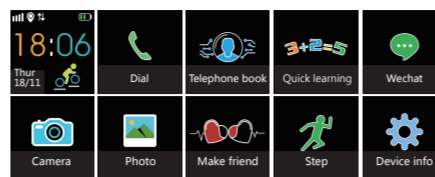
PRODUCT FUNCTION

- Base station+GPS Dual positioning
- Phonebook
- Two way calling - watch can make and receive calls
- Secure zone
- Alarm clock
- SOS Emergency alert
- Remote power off
- Low battery alarm
- Bumper friend
- Pedometer to count steps

WATCH INSTRUCTIONS



SCREEN DISPLAY AND DESCRIPTION



Main interface: The small icon of the first line is GSM signal, ring mode, networking mark, positioning icon, voice mark (not marked in the diagram), battery mark, below is time and date.

Dial the telephone: Touch screen - touch to enter your phone book, it supports up to 15 numbers.

Phonebook: Touch screen - touch to enter your phone book, it supports up to 15 numbers.

Quick learning: Click the start menu and check the correct answer

SOS Alert: hold down the power key (sos key) for 3 seconds and the watch screen will show SOS. The watch will dial the selected numbers in the application.

Wechat: Watch can send a voice message to the application (SeTracker2) on your mobile phone.

Camera: Mobile phone APP (SeTracker2) can take photos remotely, and the watch side can also take photos by itself.

Photo: You can save a photo.

Make friend interface: You can bump two watches together in the mode to pair them as friends. The watch will prompt when successful, please note this watch can only support one friend been paired at a time. After successfully pairing with a friend hold down the power button and you can send voice messages.

Step count: The step count is deactivated by default. Please enable it in the APP. The watch will count your child's steps automatically after the step count is enabled.

Device info: You can scan the qr code of the APP (Setracker2) for download, as well as look up the registration code and device ID number

OPERATING INSTRUCTIONS

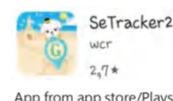
APP download and registration of administrator account

1. Please scan the below QR code to install application.

Alternatively go to your app store and search for - **SeTracker2**



App QR Code



App from app store/Playstore

Note: The watch can only be linked to one registered account on SeTracker 2 application. You can download the app on multiple devices and use the same log in details as registered account. You can add more than one watch to the registered account by using the add device function.

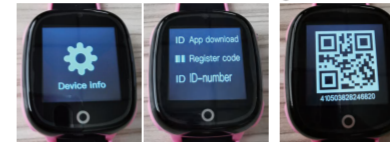
After download is completed, new users click the registration icon, perform account registration with prompt.

Note: The person registering is required to input their mobile number in the application.

Linking watch to account

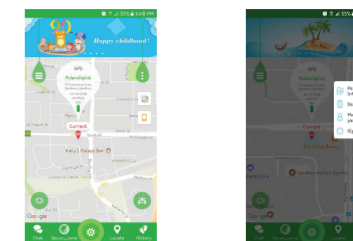
After account registration is successful, you will need to link the watch to your account. The registration code of the watch is used to link the watch.

Note: Open the settings page in the watch software, and then click the registration code menu. A QR code and ID number will appear. At this time, the mobile phone APP can be scanned to the QR code or enter the ID number. You can also enter the ID number manually. The number below the dimension code is registered for binding.



FUNCTIONS SET UP: Registering watch on app

1. On the home screen please click on the green teardrop on the top right hand side of the screen to register your child's device.

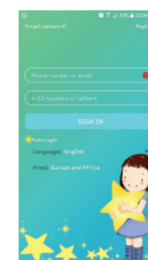


2. Click on device list and then click on Add Device.
3. Enter the registration code (found at the back of the watch) manually or scan with QR Code reader and enter child's name or nick name of watch then press SAVE to confirm.

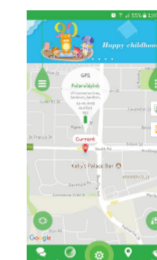
If you get a error message "NO NETWORK EQUIPMENT" this means that you do not have network signal, please move to another location and try again.

INTRODUCTION TO MAIN FUNCTIONS

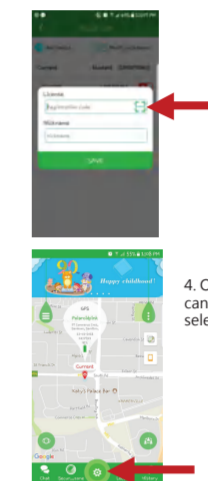
After completion of registration, input correct account and password to log into application. Please select Language: English and Area: Europe and Africa Enter the main interface. See below



Log in with user name and password

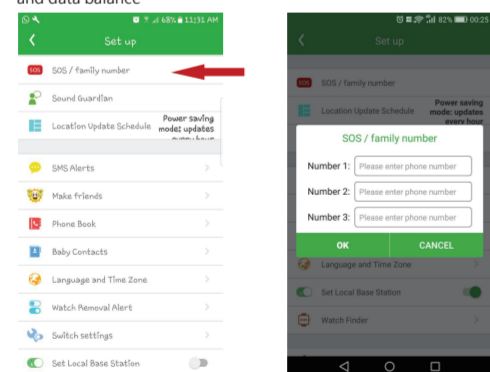


Main Interface

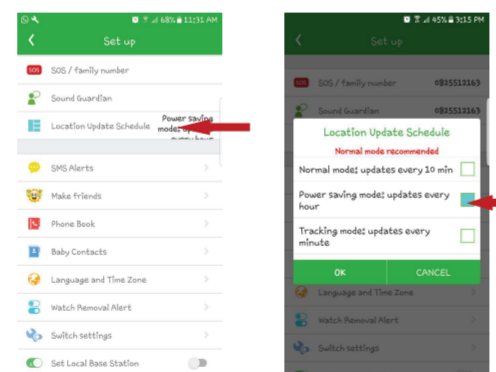


4. Once you have successfully registered you can set up the features of the watch. Please select the settings button.

5. SOS/ FAMILY NUMBER: You can enter 3 pre-programmed SOS numbers. Please select OK to confirm your setting. If you get a error message "NO NETWORK EQUIPMENT" this means that you do not have network signal or you not have airtime and data, please move to another location and try again or check your airtime and data balance

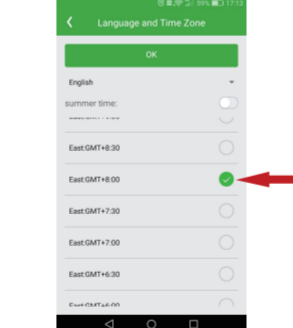


7. LOCATION UPDATE SCHEDULE: This mode determines how often the watch will send a GPS signal to the mobile. If the WATCH Battery is not lasting then please change the setting.



11. BABY CONTACTS: You can add phone numbers of your child's friends with the same watch so they can communicate through the watch

12. LANGUAGE AND TIME ZONE: Select language and time zone. For Russian customers, please choose East: GMT+8:00



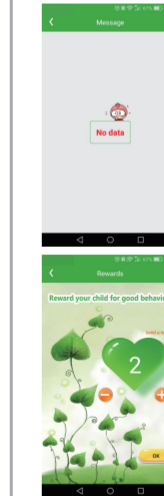
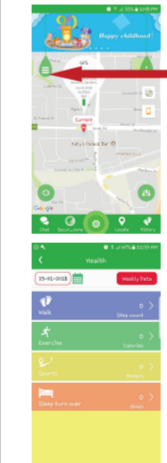
13. SET LBS: is another way to track the watch as this device has GPS tracking and LBS tracking

INTRODUCTION TO FUN ACTIVE FUNCTIONS

On the Main interface page please go to green teardrop on the left hand side of the screen.

1. Health - This allows parents to monitor their kids activities

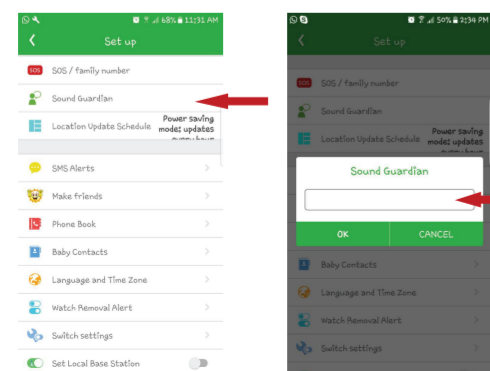
- Step counter
- Sports
- Exercise
- Sleep patterns



4. Messages - parents can send the watch a message

5. Rewards - you can reward your kids for good behaviour with hearts.

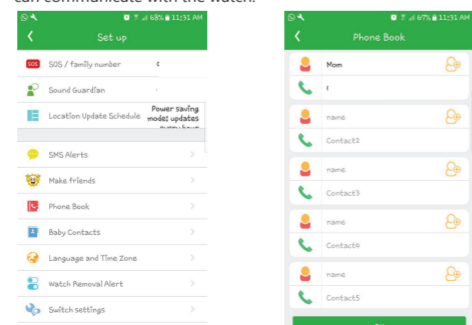
6. SOUND GUARDIAN: This feature allows you to set a number that the watch will call without your child knowing you as the parent can listen to your child's surroundings.



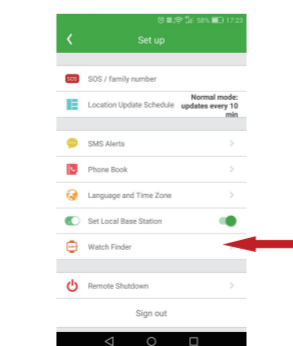
8. SMS ALERT: Please select when you want to receive a sms (Low battery SOS) please select OK when you done with your selection.

9. MAKE FRIENDS: when kids have other friends with the same watch they can communicate. - WATCH ONLY SUPPORTS ONE WATCH AT A TIME

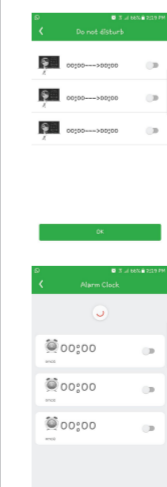
10. PHONE BOOK: Parents can programme up to 10 numbers that can communicate with the watch.



14. WATCH FINDER: is when you want to find the watch. An alarm will go off if the watch is in close proximity of the mobile device.



15. REMOTE SHUTDOWN: You can switch the watch off from your mobile device.



2. Do not disturb - Set a time that no one can make a call or send messages to the watch (eg: during school hours)

3. Alarm clock - Parents can set an alarm clock to wake kids up

Notes
