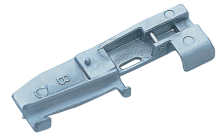


For Imagine, Imagine-2, Imagine Wave,
Eclipse, Eclipse-2, Enlighten

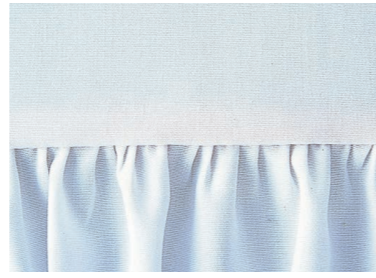
baby lock

baby lock

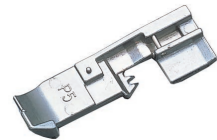
Beading Foot
B5002-01A-C-E



Ruffling Foot
B5002S03A-E



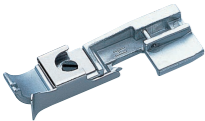
Piping Foot
5mm : B5002-03A-C-E
3mm : B5002-02A-C-E



Elastic Foot
B5002S01A-E



Blindhemming Foot
B5002S02A-E



Lace Applicator Foot
B5002S05A-E

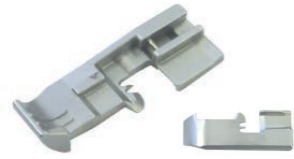


Flat Sole Foot
B5001T02A-C-E



* For Imagine, Eclipse
Eclipse-2

Flat Sole Foot
B5001T02B-C-E



* For Imagine-2, Eclipse-3
Imagine WAVE, Enlighten

Clear Foot
B5002K01A-E



* For Imagine, Eclipse
Eclipse-2

Clear Foot
B5002K02A-E



* For Imagine-2, Eclipse-3
Imagine WAVE, Enlighten

6 Feet Package A-6EU

- Included Item :
- Beading Foot
 - Blindhemming Foot
 - Piping Foot 3mm
 - Shirring Foot
 - Piping Foot 5mm
 - Elastic Foot

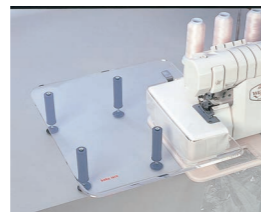


For All Models

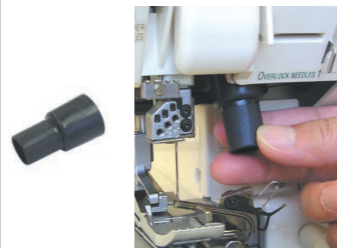
Trim Bin
800N



Wide Table
CT-1E



Bulb Changer
B7525-01A



OPTIONAL ACCESSORIES



For Evolve, Evolution
BLCS1,2,3, BLCS-2



Beading Foot
 B5002-04A-C-E



* For Evolve, Evolution

Ruffling Foot
 B5002S07A-E



Hem Foot
 B5002S12A-E



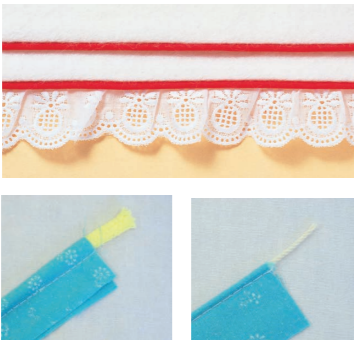
* For BLCS1,2,3, BLCS-2

Grooved Foot
 B5002S11A



* For Evolve, Evolution

Piping Foot
 5mm : B5002-05A-C-E
 3mm : B5002-11A-C-E



* For Evolve, Evolution

Elastic Foot
 B5002S09A-E

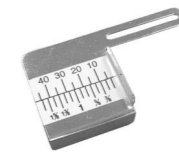


* For Evolve, Evolution

Adjustable Tape Guide
 B0421S01A-E



Fabric Guide
 B0420S01A-E



Blindhemming Foot
 B5002S06A-E



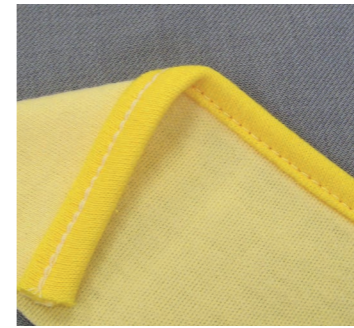
* For Evolve, Evolution

Lace Applicator Foot
 B5002S08A-E

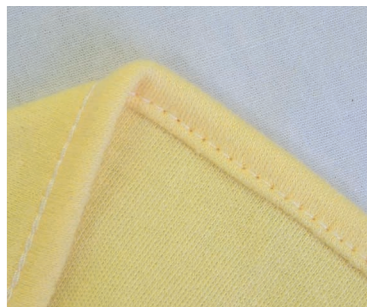


* For Evolve, Evolution

Double Fold Bias Binder
 36mm : B0421S02A-E
 28mm : B0421S03A-E



Plain Hemmer
 1/2" : B0421S06A-E
 1/4" : B0421S07A-E

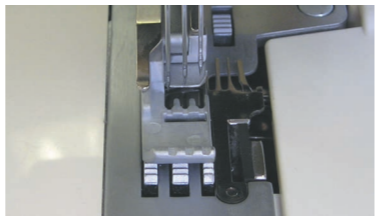


Pintuck Foot
 B5002-06A-C-E



* For Evolve, Evolution
 BLCS1

Cover Stitch Foot
 B5002S10B-E



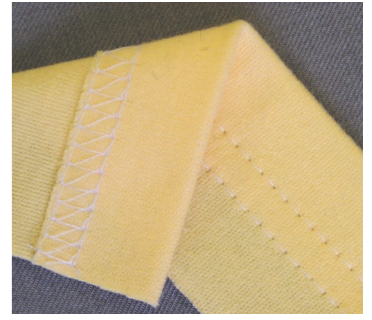
* For Evolve, Evolution

Single Fold Bias Binder
 28mm : B0421S04A-E
 40mm : B0421S05A-E

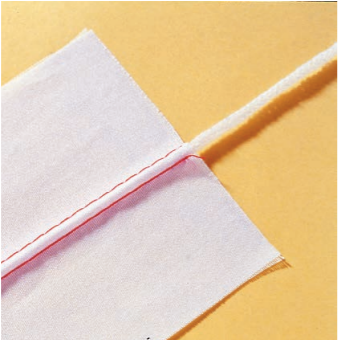


Single Downturn Feller

5/8" : B0421S08A-E
 1" : B0421S09A-E
 1/4" : B0421S10A-E

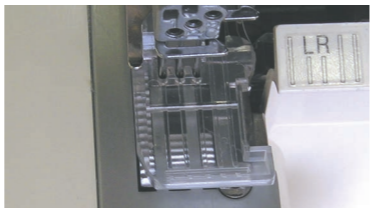


Pintuck Foot
 B5002-06B-C-E



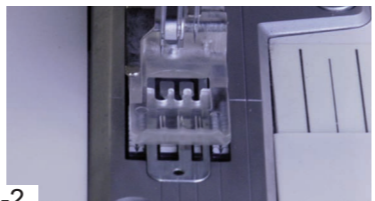
* For BLCS2, BLCS3,
 BLCS-2

Clear Foot
 B5002S14A-E



* For Evolve, Evolution

Clear Foot
 B5002K03A-E



* For BLCS1,2,3, BLCS-2

Double Fold Bias Binder
 30mm : D13-4-08E
 36mm : D13-4-10E
 48mm : D13-4-15E



* For BLCS1,2,3, BLCS-2

Belt Loop Folder
 1-1/2" : B0421S11A-E
 3/4" : B0421S12A-E

