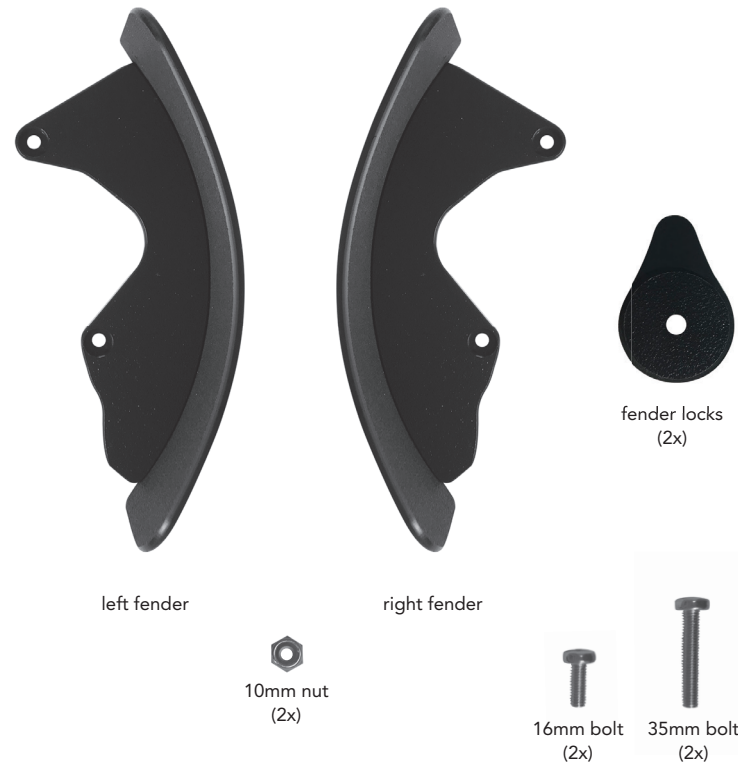


# Backpack Cart LG Fender Installation Instructions

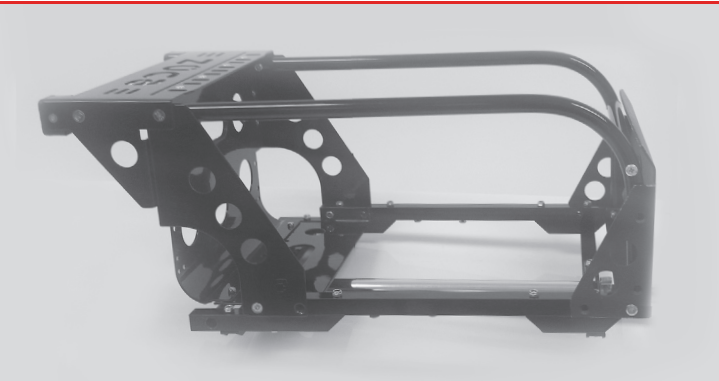
## KIT PARTS:



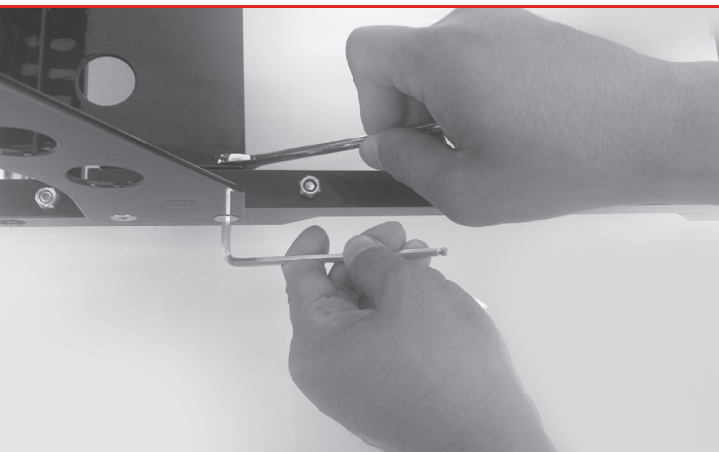
## YOU WILL NEED:



1. Remove both wheels, spacers and axle.



2. Lay the Backpack Cart LG on its back.



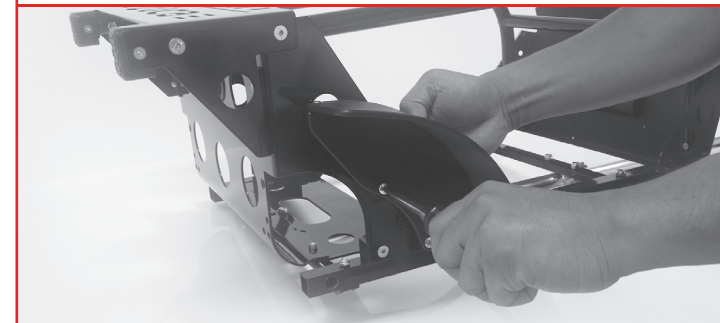
3. Remove the top bolt that attaches the side panel to the square tube. You will not need this bolt, but set aside the nut for Step 4.



4. Attach the left fender using a 35mm bolt and the nut from Step 3. Pass the bolt through the top hole in the fender from the outside, through the square tube into the nut. Do not fully tighten.



5. Snap a 10mm nut into a fender lock. Press the fender lock into the inside of the frame as shown.



6. Line up the lower hole in the fender with the nut inside of the fender lock. Use a 16mm bolt to secure. Tighten fully and then tighten the bolt from Step 4.

7. Repeat Steps 1-6 for the alternate fender.



8. Reinstall the wheels, spacer and axle. Your Backpack Cart LG Fender installation is now complete.



Gear up and go!