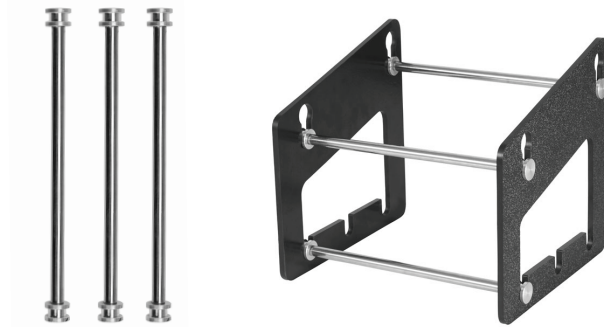




Build the Disc Golf Rack (Compact Disc Golf Cart)

Compact Disc Golf Rack includes the following parts:
(3) support bars
(2) side walls



1. You will need to assemble the Compact Disc Golf Rack *inside* the bag. Place side walls inside bag with notches facing up on the bottom and the short side facing toward you.



2. Push all three support bars into place, one at a time, starting from the bottom level. Bottom bar can be positioned horizontally on any of the 3 bottom notches to customize your storage needs.

Note: support bars must “snap” into place to ensure structural integrity.



3. Once assembled, you may begin adding your discs and mini utility pouches.

