



# VENTI



## ARIA

### DECENTRALISED MECHANICAL CONTINUOUS EXTRACT UNIT FOR WET ROOMS

A discreet quiet continuous-running decentralised mechanical extract ventilator for use in wet rooms such as kitchens, bath / shower rooms, toilets and utility rooms. This unit is suitable for new-build installations or can be retro fitted. A better choice over conventional intermittent extract fans to ensure prevention of damp issues.



### HOW DOES IT WORK?

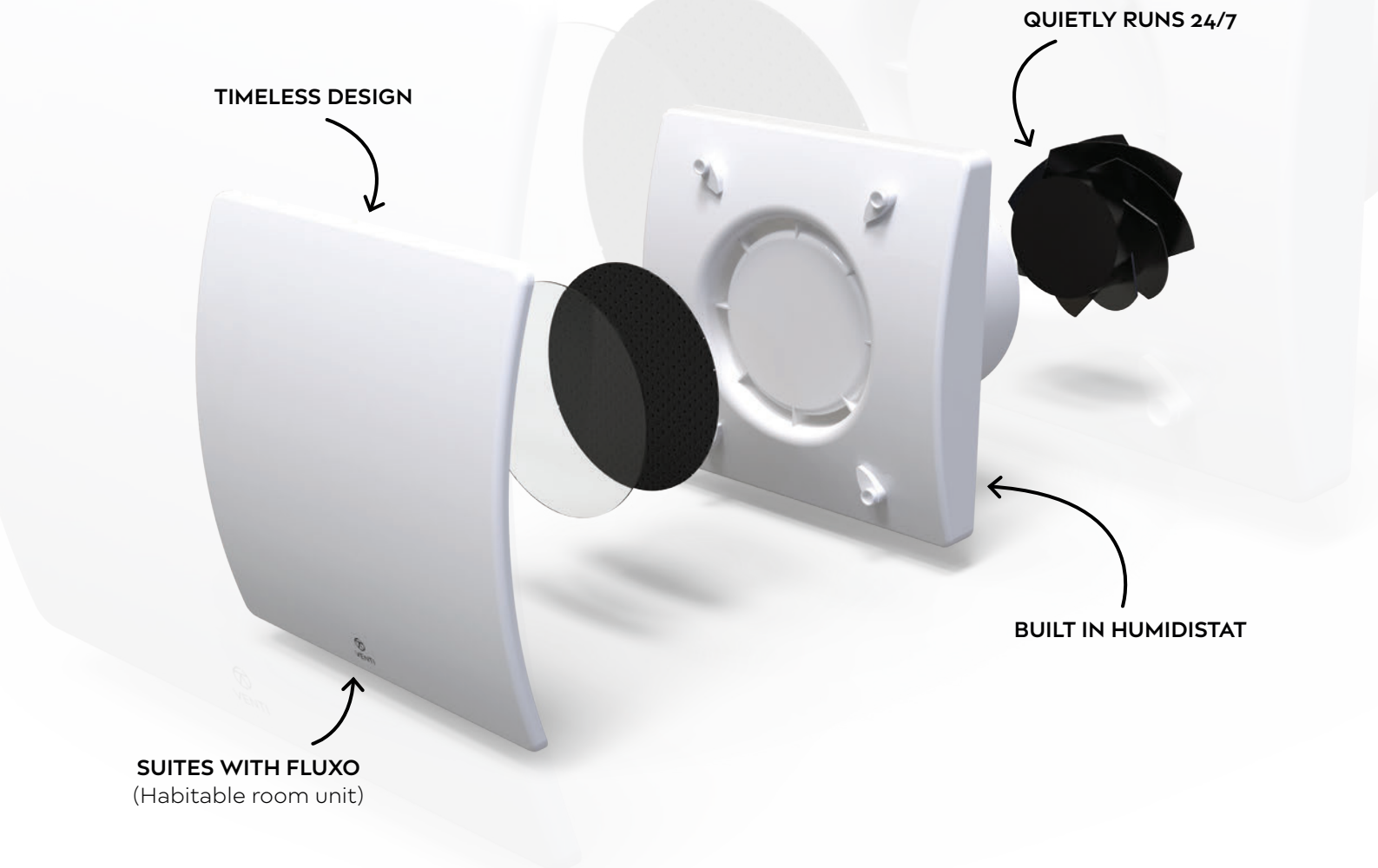
#### VENTI ARIA DMEV HT

This continuously running unit extracts air from any wet room. In normal mode the fan will draw air out of the room on trickle speed. If the humidity rises above the pre-set level the fan will then boost until the humidity drops, then it will return to trickle speed. Also includes run-on timer settings and a manual switch activation for boost mode.

The benefit of this unit over a conventional intermittent extract fan is that moisture in the room is continuously drawn out. On average, a standard extract fan will shut off after 15 minutes, but in reality a shower tray, for example, takes over 90 minutes to dry. This product will also remove indoor air-borne pollutants.

# THE ARIA

## CONTINUOUS EXTRACT FOR WET ROOMS



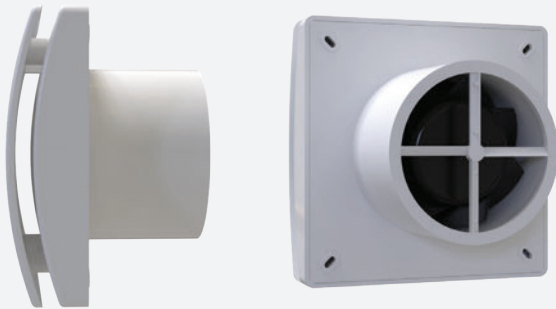
### TECHNICAL

- A decentralised continuous mechanical extract ventilation unit
- The unit is equipped with a humidity sensor that operates in AUTO mode. The humidistat records the humidity levels and triggers if there is a steep variation of the humidity and if the humidity level is over 65%. If the humidistat is activated, the unit runs at the intermediate speed (adjustable from 8 – 20 l/s) and continues to run for a fixed time of 5 minutes after the humidity level stabilises
- The unit is equipped with a run-on timer, the duration of which is determined by how long the external switch is on for
- Has the ability to connect to a light / motion switch to activate boost mode manually (for instance in a WC where the humidity is not likely to rise). An LED indicates when boost mode is on
- Very quiet (from 9db)
- Double insulated - no earth connection is required

## ORDER DETAILS

ORDER CODE		PRICE
ARI-100-HT-WH	VENTI ARIA DMEV unit	WH £155
AR1-100-HT-WH-SET	VENTI ARIA DMEV Unit complete with rigid wall duct and external grille	WH £195

- Fully manufactured in Europe.
- Low power consumption (Brushless motor).
- Easy maintenance.
- 5 year warranty.



## PERFORMANCE DATA

MODEL	ARIA DMEV 100
Air-flow l/s	max 23.05 min 7.5
Power consumption W	max 2.6 min 1.0
Sound pressure db(A) @ 3m (1)	max 26 min 11
Ambient temp. °C max	50
Degree of protection IP	X4
Marking	CE

- air performance measured according to ISO 5801 a 220-240V ~50Hz, air density 1.2Kg/m<sup>3</sup>

(1) sound pressure level @ 3m in free field, for comparative purposes only

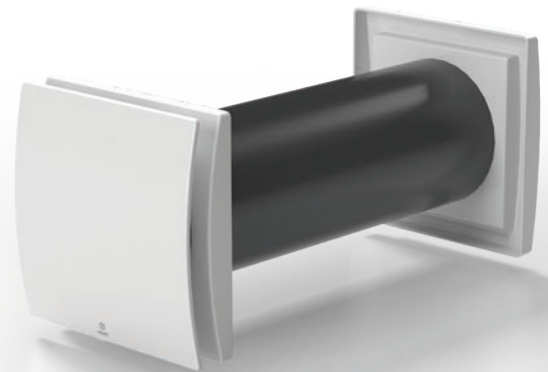
## WHAT DO I USE IN HABITABLE ROOMS?

The FLUXO unit! (Suites with **ARIA**)

The FLUXO unit is designed to ventilate habitable rooms such as a bedroom, lounge, dining room or study. This unit extracts stale air out of the room (whilst retaining the heat in its heat recovery unit) and then supplies fresh filtered air in from outside, in a continuous 70 second cycle.

The FLUXO can also be used in wet rooms but is not recommended for high humidity environments like a shower rooms

ORDER CODE	
FL1-100-WH	100mm Fluxo unit (3-8 litres per second)
FL1-150-WH	100mm Fluxo unit (6-17 litres per second)



Request the FLUXO brochure



# TECHNICAL DIMENSIONS

