

AIR INNOVATIONS®



CLEAN MIST® TOP-FILL SENSATOUCH™ HUMIDIFIER WITH AROMA TRAY

Instruction Manual and Warranty Information

READ AND SAVE THESE INSTRUCTIONS

Contents

Safety Instructions..... 1

Unpacking / Specifications 2

Parts & Contents 3

Filling The Water Tank 4

Operating Instructions..... 5

Weekly Cleaning & Care / Storage 6

Troubleshooting..... 7

Other Great Products 8

Warranty 9



If you have a respiratory condition, please contact your physician prior to use.

FCC STATEMENT

Potential for Radio/Television interference

This device complies with Part 18 of the FCC Rules. Operation is subject to the following two conditions:
(1) This device may not cause harmful interference, and (2) this device must accept any interference received, including interference that may cause undesired operation. This product has been tested and found to comply with the limits for a Class B digital device, pursuant to Part 18 of the FCC rules.

These limits are designed to provide reasonable protection against harmful interference in a residential installation. The product generates, uses, and can radiate radio frequency energy and, if not installed and used in accordance with the instructions, may cause harmful interference to radio communications. However, there is no guarantee that the interference will not occur in a particular installation. If the product does cause harmful interference to radio or television reception, which can be determined by turning the product on or off, the user is encouraged to try to correct the interference by one or more of the following measures:

- Reorient or relocate the receiving antenna.
- Increase the separation between the product and the receiver.
- Connect the product into an outlet on a circuit different from that to which the receiver is connected.
- Consult the dealer or an experienced radio/TV technician for help.
- Changes or modifications not expressly approved by the party responsible for compliance could void the user's authority to operate the equipment.

SAFETY INSTRUCTIONS

READ AND SAVE THESE INSTRUCTIONS: Failure to follow all the instructions may result in electrical shock.

WARNING

- This appliance has a polarized plug (one blade is wider than the other) as a safety feature. If the plug does not fit fully into the outlet, reverse the plug. If it still doesn't fit, contact a qualified electrician. **DO NOT** attempt to defeat this safety feature.
- Before using the humidifier, extend the cord and inspect for any signs of damage; **DO NOT** use if the cord has been damaged.
- Keep cord away from heated surfaces and out of the way, where it cannot be stepped on or tripped over.
- **NEVER** use in an environment where explosive gases are present.
- Place humidifier on a stable level surface; **DO NOT** place on carpet, next to heating vents, under direct sunlight, in high temperature areas, or near computers and electronic equipment.
- **DO NOT** place the humidifier directly on wood furniture or other surfaces which could get damaged by water.
- **DO NOT** direct the mist against a wall or home appliances.
- **NEVER** operate without water in the Tank; **DO NOT** use anything other than room temperature tap or distilled water.
- **NEVER** add essential oils directly to the water, as this will damage the unit and void the warranty.
- **DO NOT** touch the water in the Base during operation.
- **DO NOT** expose or immerse the Base in water when cleaning.
- **DO NOT** pour water into the base through the Air Outlet during cleaning and filling.
- **NEVER** block the Air Outlet or intake or cover the unit when it's in operation
- **DO NOT** use any attachments not provided with the unit.
- Discontinue use if humidifier makes loud noises or has a strange smell.
- **DO NOT** attempt to repair or adjust the unit; servicing must be performed by professional or qualified personnel.

CAUTION

- Only operate when fully assembled; only use as intended and described in this manual.
- Keep out of reach of small children.
- Always insert plug securely into the power source.
- Unplug the unit and empty the Water Tank and Base before carrying/moving.
- Only unplug when the humidifier is turned off; ensure hands are dry.
- Always turn off the unit before removing, emptying or filling the Water Tank.
- Perform regular maintenance of the Ultrasonic Nebulizer; **NEVER** scrape Nebulizer with a hard or sharp object.
- Dry the unit completely before storage; store in a cool, dry place.
- Do not drop, hit or otherwise subject this product to excessive shock.

No More Dry Air

Thank you for choosing the Air Innovations® – Clean Mist® Top-Fill SensaTouch™ Humidifier with Aroma Tray and congratulations on taking this important step in improving the quality of air in your home or office.

The Air Innovations® – Clean Mist® Top-Fill SensaTouch™ Humidifier wth Aroma Tray uses Ultrasonic Top-Fill Technology to create humidity instantaneously, while working silently to erase the discomforts of dry air.

Unpacking

1



Remove the humidifier from the box.

2



Remove the plastic bag from the humidifier.

*Follow directions to fill and operate the humidifier.

Specifications

Product Model	Power Consumption	Rating Voltage	Tank Capacity	Dimensions	Weight
MH-325	30W	120V ~ 60Hz	5.2L / 1.3 Gallons	W9.25" x D7.87" x H12.75"	3.33 lbs.

Parts & Contents



Water Tank



Base



1. Rotating Mist Nozzle
2. Water Tank Cover
3. Water Tank Lid
4. Water Tank
5. Water Window
6. SensaTouch™ Control Panel
7. Mist Outlet
8. Filter Mount
9. Water Sensor Float
10. Air Outlet
11. Water Reservoir
12. Ultrasonic Nebulizer
13. Ceramic Filter
14. Aroma Tray

Filling The Water Tank

- ⚠ **WARNING:** Never turn Water Tank upside down when full.
- ⚠ **WARNING: DO NOT** use extremely cold water, since it may temporarily reduce the mist output.
- ⚠ **WARNING: NEVER** fill with hot/warm water or use additives as this could damage the unit and void the warranty.



Ensure that the Water Tank is properly seated on the Base, with no visible gaps. Fill the Tank with clean, cool tap water. **Note:** Do not fill past the MAX fill line. Close the Water Tank Cover and adjust the Rotating Mist Nozzle to desired direction.

About White Dust

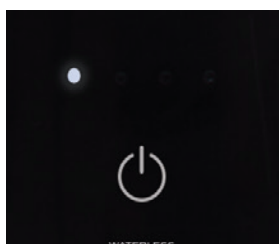
Use of high mineral content water may cause a white mineral residue to accumulate on surfaces in the room near the humidifier. The mineral residue is commonly called “white dust” and is caused by minerals suspended in the water. The higher the mineral content (or, the harder your water is), the greater the potential for white dust. The dust is not caused by a defect in the humidifier. To reduce white dust we recommend using filtered or distilled water.

Operating Instructions

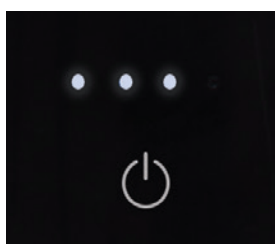
Manual Use - Plug unit into a standard (120V AC) electrical outlet.

ON/OFF - Touch the SensaTouch™ control button to turn the humidifier on. **NOTE:** During the first use the waterless indicator may illuminate before mist appears; allow up to 15 minutes for the water in the tank to transfer to the base.

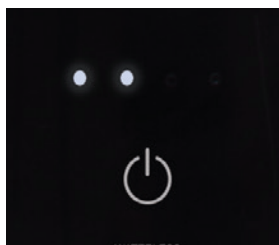
Mist Output - When you turn the unit ON, it will default to the **Low** mist setting and one white LED light will be lit. Touching the control button again will increase the output, and is indicated by the additional white LED lights (see below). Touch once for **Medium**, twice for **High**, three times for the **Supreme** setting. Touching the control button a fourth time will turn the humidifier off. **Note:** The humidifier fan will continue to blow for approximately 5 minutes after the unit is turned off. This is to ensure the Air Outlet remains dry.



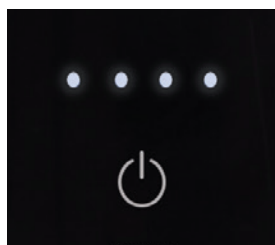
LOW



HIGH



MEDIUM



SUPREME

Sound/Beep Function - The humidifier is factory set to silent mode and will not beep when selecting mist output levels or when the unit is out of water. If you wish to enable an audible beep, press and hold the control button until a beep is heard (approximately 3 seconds); now the unit will beep as mist settings are selected and will beep three times when out of water. To disable the beep function, again press and hold the control button until a beep is heard.

Safety Shut-Off - When the tank is out of water the Waterless indicator will illuminate and the Automatic Safety Shut-Off will turn the unit OFF. If the beep function is enabled, the unit will beep three times before turning off.

Aroma Tray - By inserting an Air Innovations Essential Oil Aroma Pad into the built-in aromatherapy tray, you can transform your humidifier into an easy-to-use fragrance dispenser creating a spa like experience. Visit www.Air-Innovations.com to purchase Aroma Pads.



Weekly Cleaning & Care

We recommend thoroughly cleaning the humidifier at least once a week.

To Clean the Tank

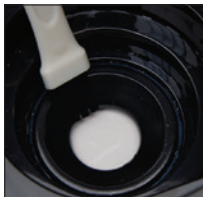
Remove the Water Tank and empty the water. Clean and wipe the Tank with a soft damp cloth. If necessary a mild cleaning solution may be used. The Water Filter simply snaps onto the base of the Tank by turning counter-clockwise. To clean, remove the filter, rinse with water and replace.

To Clean the Base

Empty the water from the Base, pouring away from the Air Inlet. Wipe with a soft cloth.



Note: the Water Sensor Float is removable for cleaning. Simply lift up and out of it's bracket. Float must be replaced before use.



To remove any scale or build-up in the Base or on the Ultrasonic Nebulizer, pour a 50/50 mixture of vinegar and lukewarm water onto the surface, then soak for five minutes. Clean with a cotton swab and rinse. **Note:** Never submerge the base in water or any liquid.

Storage

1. Follow all cleaning instructions prior to storage.
2. Dry all parts, including the inside of the Water Tank and the Water Reservoir.
3. Preferably store in its original box, in a dry place away from high temperatures.

Troubleshooting

Problem	Solution
Weak or no mist output.	<p>The water in the unit is too cold: Replace with cool but not cold water or set output to High and wait 10-15 minutes.</p> <p>The Water Tank is not seated on the Base: Adjust the Tank so that it is firmly seated on the Base, with no visible gaps.</p> <p>The Water Sensor Float has detached from the Base: Check that the Float has not detached and is positioned correctly in the Base.</p> <p>The surface of the Ultrasonic Nebulizer is dirty: Clean Ultrasonic Nebulizer. (see pg. 6 "White Dust Cleaning")</p> <p>Ultrasonic Nebulizer is not working: See Warranty.</p>
White dust is forming on nearby furniture.	Hard tap water may deposit a certain amount of dust. Visit our website (www.Air-Innovations.com) to purchase Humidifier Demineralization Filters or use distilled water.
Water is leaking.	Humidifier is not on a level surface: Place on level surface.
Condensation is forming around humidifier or windows.	<p>Mist output level is too high for room size: Decrease the mist output.</p> <p>Direction of Rotating Mist Nozzle: Change direction of nozzle.</p>
Aroma Tray does not close.	Aroma Pad is not seated properly: Remove and reinsert the pad.
4 LED lights continuously flash for more than one minute.	Unit is in Alert Mode: Unplug and restart the humidifier; if problem continues, call our Customer Service Center for assistance.
Missing parts.	<p>Call us toll free at: 844-600-1370, Monday thru Friday 8:30am to 5pm EST.</p> <p>Please reference model: MH-325</p>



Try These Other Great
Products For Your **Life!**

GREAT
INNOVATIONS

Available at: www.ForLifeProducts.com, www.Air-Innovations.com, www.Pursfection.com, www.RejuvenateProducts.com



Pursfection®



Rejuvenate® 
Make it NEW Again!



1-YEAR WARRANTY - MH-325



Air Innovations® Clean Mist® Top-Fill SensaTouch™ Humidifier with Aroma Tray comes with a 1-year manufacturer's warranty. If this unit should become defective within 1-year from the date of purchase, or if you have any questions or comments or regarding replacements for any of our products, please contact us directly at:

Call us toll free at: 844-600-1370
Monday thru Friday 8:30 AM to 5:00 PM EST.
Visit us on the web at: www.Air-Innovations.com
e-mail us: sales@air-innovations.com

Or write us:

Great Innovations, LLC
Att: Quality Assurance Dept.
2301 SW 145th Ave.
Miramar, FL. 33027 USA

Please fill out the warranty card and
mail back to the above address.
Or, register your warranty online today.
Simply go to:
www.Air-Innovations.com

NAME _____
ADDRESS _____
CITY _____
STATE _____ ZIP _____
TELEPHONE _____
E-MAIL _____
DATE OF PURCHASE _____
PLACE OF PURCHASE _____

☐ Please check here if you would not like to receive any solicitations from our company

THIS UNIT COMES WITH A 1-YEAR WARRANTY SUBJECT TO THE FOLLOWING CONDITIONS:

In the first year, all repairs will be performed free of charge or the unit will be replaced. This warranty is not transferable, it is valid only for the original purchaser. This warranty will be voided if the unit is subjected to unauthorized repair or impact damage. If you have any questions please call toll free: 844-600-1370. This warranty gives you specific legal rights, and you may also have other rights which vary from state to state.



AIR
INNOVATIONS



Available In A Variety Of Colors

Air Innovations® ©2020 Great Innovations, L.L.C. All Rights Reserved. US & International Patents Pending. Printed in China.

