

# AIR INNOVATIONS®

Sleep Better, Feel Better, Look Better!



**3-IN-1 FAN**  
WITH REMOTE  
CONTROL &  
TURBO SPEED

# AIR INNOVATIONS®

## 12" SWIRL COOL™

### Instruction Manual & Warranty Information

READ AND SAVE THESE INSTRUCTIONS



**3-IN-1 FAN**  
WITH REMOTE  
CONTROL &  
TURBO SPEED

Model No. AI-4800

[www.Air-Innovations.com](http://www.Air-Innovations.com)

Air Innovations® 2022 Great Innovations, LLC. All Rights Reserved. US & International Patents Pending. Printed In China

### Instruction Manual & Warranty Information

READ AND SAVE THESE INSTRUCTIONS

# Contents

Safety Instructions.....	1
How It Works/Specifications.....	2
Parts/Fan Assembly.....	3
Operating Instructions/SwirlCool™/LED Dim Function.....	4
Setting The Timer/Remote Control/Convert To Tabletop.....	5
Cleaning.....	6
Servicing Instructions.....	7
Other Great Products.....	8
Warranty.....	9

## FCC Statement

### Potential for Radio/Television interference

This device complies with Part 15 of the FCC Rules. Operation is subject to the following two conditions:

(1) This device may not cause harmful interference, and (2) this device must accept any interference received, including interference that may cause undesired operation. This product has been tested and found to comply with the limits for a Class B digital device, pursuant to Part 15 of the FCC rules.

These limits are designed to provide reasonable protection against harmful interference in a residential installation. The product generates, uses, and can radiate radio frequency energy and, if not installed and used in accordance with the instructions, may cause harmful interference to radio communications. However, there is no guarantee that the interference will not occur in a particular installation. If the product does cause harmful interference to radio or television reception, which can be determined by turning the product on or off, the user is encouraged to try to correct the interference by one or more of the following measures:

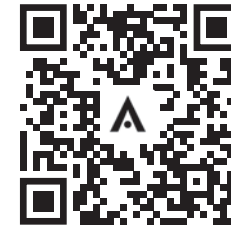
- Reorient or relocate the receiving antenna.
- Increase the separation between the product and the receiver.
- Connect the product into an outlet on a circuit different from that to which the receiver is connected.
- Consult the dealer or an experienced radio/TV technician for help
- Changes or modifications not expressly approved by the party responsible for compliance could void the user's authority to operate the equipment.

# 1-YEAR WARRANTY



**Air Innovations® 12" SwirlCool™ 3-in-1 Fan comes with a 1-year Manufacturer's Warranty. Please register your warranty online today. Simply scan the QR code below or go to: [www.Air-Innovations.com/warranty](http://www.Air-Innovations.com/warranty)**

Model No. AI-4800



**SCAN ME**

If this unit should become defective within 1-year from the date of purchase, or if you have any questions or comments regarding replacements for any of our products, please register your warranty and contact us directly at:

Call us toll free at: 844-600-1370

Monday thru Friday 8:30 AM to 5:00 PM EST.

Visit us on the web at: [www.Air-Innovations.com/warranty](http://www.Air-Innovations.com/warranty)

E-mail us: [claims@air-innovations.com](mailto:claims@air-innovations.com)

Or write us:

Air Innovations

Attn: Quality Assurance Dept.

2301 SW 145th Ave.

Miramar, FL. 33027 USA

### **THIS UNIT COMES WITH A 1-YEAR WARRANTY SUBJECT TO THE FOLLOWING CONDITIONS:**

In the first year, all repairs will be performed free of charge or the unit will be replaced. This warranty is not transferable, it is valid only for the original purchaser. This warranty will be voided if the unit is subjected to unauthorized repair or impact damage. If you have any questions please call toll free: 844-600-1370. This warranty gives you specific legal rights, and you may also have other rights which vary from state to state.

# AIR INNOVATIONS®

Sleep Better, Feel Better, Look Better!



TRY THESE OTHER GREAT PRODUCTS

Available at: [www.Air-Innovations.com](http://www.Air-Innovations.com)

# AIR INNOVATIONS®

## How it works

Thank you for purchasing the **Air Innovations® 12" SwirlCool™ 3-in-1 Fan**. This product comes with a **1-YEAR WARRANTY** from the date of purchase as your satisfaction is our primary concern.

**Air Innovations® 12" SwirlCool™ 3-in-1 Fan** helps to cool and circulate the air around you. Perfect for any room in your home or office, this stand fan is adjustable in height and can be converted to a tabletop fan by simply removing the fan from the base and placing it on the included Tabletop Bracket. This 6 blade fan also includes **SwirlCool™** Technology, a unique rotating Front Grill, to increase air circulation throughout the room. With speeds from Low to Turbo & Ocean Breeze, you can change the desired fan speed at any time. The remote control allows you to control the fan's functions from anywhere in the room. The convenient timer feature allows you to set the fan to turn off in 1 hour and up to 4 hours. The LED Dim function allows you to turn off the fan's indicator lights.



## SPECIFICATIONS

Product Model	Power Consumption	Rated Voltage	Dimensions	Weight
AI-4800	50W	AC 120V-60Hz	18.89" x 18.89" x 42"	7.8Lbs.

When using electrical appliances, basic safety precautions should always be taken including the following:

- This product is for household use only; **DO NOT** use outdoors.
- Always use on dry, level surface.
- ⚠ **WARNING: DO NOT operate in the presence of explosives and/or flammable fumes.**
- Avoid contact with moving parts.
- Operate fan only when fully assembled with all parts in proper place.
- Only use attachments provided by the manufacturer for this product.
- Close supervision is necessary when any fan is used by or near children.
- Unplug from outlet when not in use, when moving fan from one location to another, before servicing and before cleaning.
- To disconnect, grip plug and pull from wall outlet; never pull on cord.
- ⚠ **WARNING: DO NOT** operate the fan with damaged cord or plug, or after the fan malfunctions, has been dropped or damaged in any manner.
- To protect against electrical shock, **DO NOT** immerse unit, plug or cord in water or spray with liquids. Plug the appliance directly into a 120V AC electrical outlet.
- ⚠ **WARNING:** To avoid fire hazard, **NEVER** place the cord under a rug or any parts near open flame, cooking or heating appliance. **DO NOT** run cord under carpeting or cover with throw rugs, runner, or similar covering. Arrange cord away from traffic areas and anywhere it will be tripped over.
- ⚠ **WARNING: To reduce the risk of fire or shock, DO NOT** use fan with any solid-state speed control device.
- This product employs overload protection (fuse). A blown fuse indicates an overload or short-circuit situation. If the fuse blows, unplug the fan from the outlet. Replace the fuse as per the User Servicing Instructions (following product marking for proper fuse rating) and check the fan. If the replacement fuse blows, a short-circuit may be present and the product should be discarded or returned to an authorized service facility for examination and/or repair.

**THIS APPLIANCE HAS A POLARIZED PLUG** (one blade is wider than the other). To reduce the risk of electric shock, this plug is intended to fit in a polarized outlet only one way. If the plug does not fit fully in the outlet, reverse the plug. If it still does not fit, contact qualified electrician to install the proper outlet.

**DO NOT ATTEMPT TO MODIFY THIS PLUG OR BYPASS THIS SAFETY FEATURE IN ANY WAY.**

## How To Replace The Fuse

**RISK OF FIRE: DO NOT** replace attachment plug. Contains a safety device (fuse) that should not be removed. Discard product if the attachment plug is damaged.

**WARNING:** Unplug fan before replacing the fuse. Grasp plug and remove from the receptacle or other outlet device. **DO NOT** unplug by pulling on cord.



## Remote Control/Battery

1. To change battery open the battery cover by pushing tab on side in, and pulling battery tray out.
2. Insert new battery with + side up.
3. Close battery cover by sliding back until it clicks into place.

**Battery Disposal: DO NOT** dispose of batteries in fire. Improper handling/disposal of batteries may cause batteries to explode or leak. Please dispose of batteries responsibly by throwing away batteries in a proper trash receptacle per township ordinance.



Back of Remote



**Note: Remote requires (1) CR2025 battery (Included)**



# CLEANING

Before cleaning, make sure the fan is UNPLUGGED. ⚠ **WARNING: DO NOT** immerse fan in water and never allow water to drip into the motor housing.

## Step 1:

Clean exterior with a soft damp cloth and mild detergent.

## Step 2:

To clean interior: remove the Front Grill (see below), then wipe the blades and Grill with a soft damp cloth and mild detergent. **NOTE:** For cleaning, only remove the Front Grill; **DO NOT** remove screws from the back of the fan.

## Removing Front Grill

Unscrew Front Grill cover counterclockwise (A). Using a Phillips head screwdriver, remove only the center screw (B). Lift the Front Grill off the center post (C). Gently wipe blades (D). **DO NOT** bend blades.

**Front Grill MUST be re-installed before operating fan.**



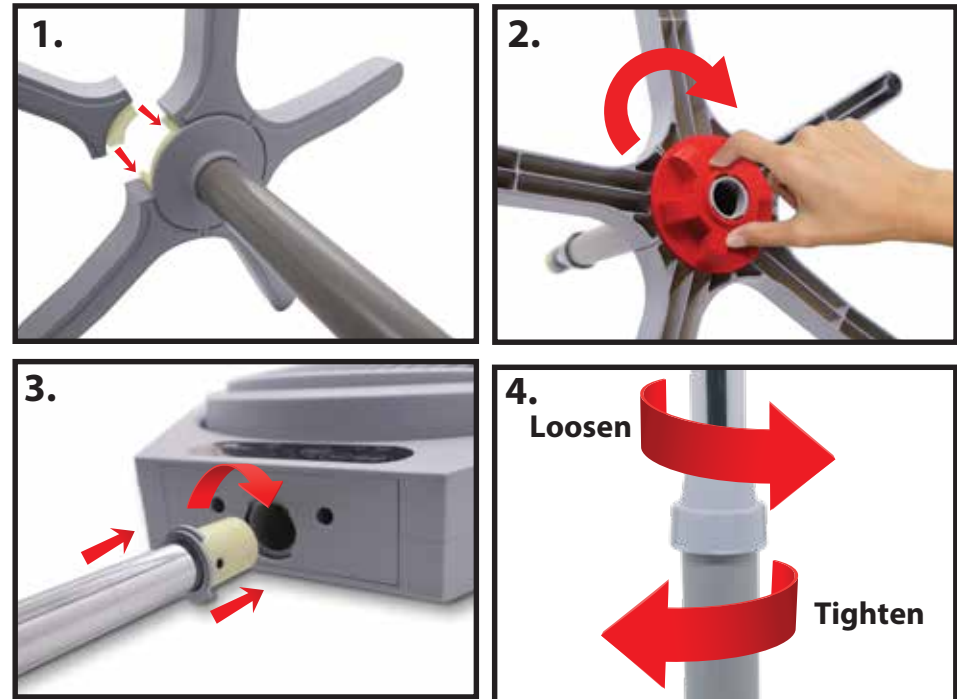
# PARTS / ASSEMBLY INSTRUCTIONS

## Parts

- #1. (1) Fan
- #2. (1) Front Grill Cover
- #3. (1) Telescoping Bar
- #4. (5) Support Feet
- #5. (1) Locking Collar
- #6. (1) Remote Control
- #7. (1) Table Top Bracket



## Assembly Instructions



1. Slide the 5 Support Feet (#4) into slots at bottom of Telescoping Bar (#3).
2. Attach Locking Collar (#5) onto bottom of Telescoping Pole (#3) to lock feet in place.
3. Attach Fan (#1) to top of (#3) Telescoping Pole, by lining up notches and turning clockwise to lock into place.
4. Adjust height by turning collar in middle of (#3) Pole counterclockwise to loosen then clockwise to tighten in place.

# OPERATING INSTRUCTIONS

Set fan on a level, dry surface and plug the cord into wall outlet. Aim the fan up or down (up to 45°) by rotating the fan housing to desired position (A). Select your desired fan speed: Low, Medium, High or Turbo by pressing the ON (SPEED) button repeatedly (B). The Ocean Breeze feature simulates gentle outdoor movement. Selected setting will light up in RED.



Note: Press ON(SPEED)OFF button repeatedly until you reach desired setting

LOW MEDIUM HIGH TURBO OCEAN BREEZE



## SwirlCool™ / LED Dim Feature

The Front Grill of this fan will rotate, if desired, to increase circulation of air throughout the room. Press the SwirlCool™ / LED Dim button once to turn on this feature. When ON the LED will glow, and the Grill will rotate. • Press two times to turn off the red indicator lights. • Press three times to stop the Grill rotation. • Press four times to turn the lights back on. **Note:** SwirlCool™ and Led Dim functions must be reset if the fan is turned off.

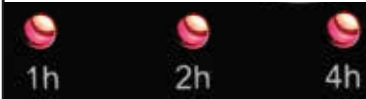


**NOTE:** The Grill may rotate in either direction. This is normal and does not affect performance

# SETTING THE TIMER

## Timer Settings

Press one time: 1 hour setting  
Press two times: 2 hour setting  
Press three times: 4 hour setting

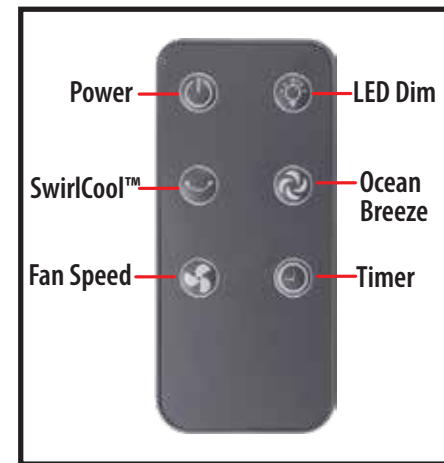


If desired, you can set the fan to turn off in 1 to 4 hours. Press the TIMER button repeatedly to achieve your desired time setting. The LED lights will glow according to the setting.

## Remote Control

All fan functions can be accessed with the remote:

- Speed - Low, Medium, High, Turbo
- Ocean Breeze - Natural breeze mode
- Swirl Cool - Rotates the grill for increased circulation
- Timer - 1 to 4 hour increments
- Led Dim - Turns off indicator lights



## Convert To Tabletop



2. Line up 2 holes on bottom of fan with tabs on table top bracket. Drop into place.



1. Remove Fan from telescoping pole by lifting it up.