



∞∞∞  
MAR DE LUA

*Eclectic  
summer*  
HS 2023  
LOOKBOOK



# About Us

**MAR DE LUA** is a 100% Colombian brand. We design energetic, stylish swimwear, resort wear and activewear, inspired in women and the sea.

Our pieces are created to fit perfectly and highlight the beauty of the female silhouette thanks to our innovative designs and smart fit.

# Sustainability

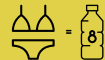
and **Social Commitment**

We are convinced that sustainable fashion is possible! Our future is not disposable, and it depends on what we do **TODAY**.

All our swimsuits are made with **recycled polyester fabrics** from PET bottles, our prints are made with biodegradable inks and UV50 protection, to promote a more conscious and **responsible lifestyle**.

We want to show that our love and respect for the sea goes beyond designing swimsuits. We work with **commitment** in creating a huge wave that drives our message. "Inspire Children and clients to respect and take care of all the wonders that live in the sea by making constant beach clean ups".

This is what really makes us  
*Seadreamers & Sealovers*



**81% Recycled Polyester - 19% Lycra**



# Who is Mar de Lua for?

- For the woman who chooses the sea as her favorite destination. This is what really makes us **ocean lovers**.
- For the free woman, who seeks to live new experiences and wears a swimsuit that makes her **look and feel comfortable**, confident and highlights her passion for adventure.
- For the woman who finds in a wave a source of energy that takes care of her **mind, body and soul**.
- For the woman who dreams of discovering new destinations and living new **adventures**.
- For the woman who is convinced that there are **wonders on the planet and in the sea**, that is why she decides to take care of it and love it.
- For all **REAL women** who are in the search of their own vital balance.





## Violet

Twisted Bikini  
**MDL 495**

**TOP**  
Twist front bandeau with removable pads and straps. Ties on back.

**BOTTOM**  
Seamless bottom. Intermediate coverage.

**Size: S M L**

81 % Recycled Polyester  
19 % Lycra  
UPF 50UV Protection



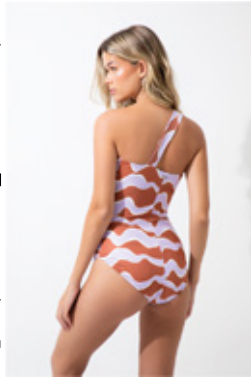
## Violet

Twisted Cut Out  
One Piece  
**MDL 496**

Seamless One Piece with cutout in the front, twisted top with removable pads and one shoulder strap.

**Size: S M L**

81 % Recycled Polyester  
19 % Lycra  
UPF 50UV Protection



## Violet

Chiffon Cover Up  
**LUA 440**

Long Sleeve Chiffon Kimono with smocked and puffed sleeves. Waist tassel string.

**ONE SIZE**  
**S/M**  
**M/L**

100% Polyester



## Violet

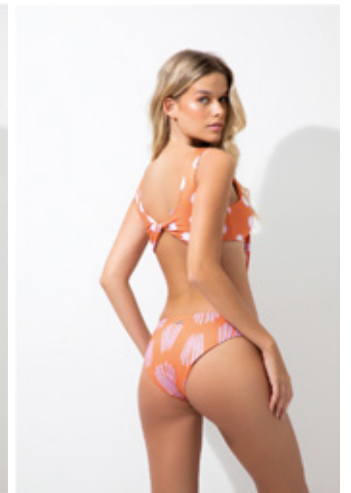
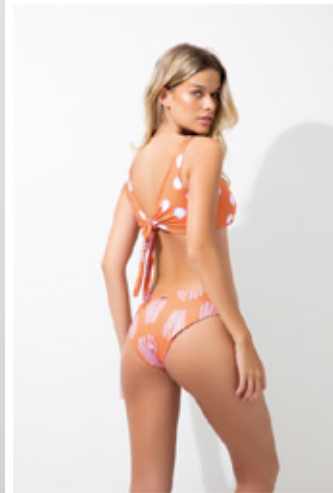
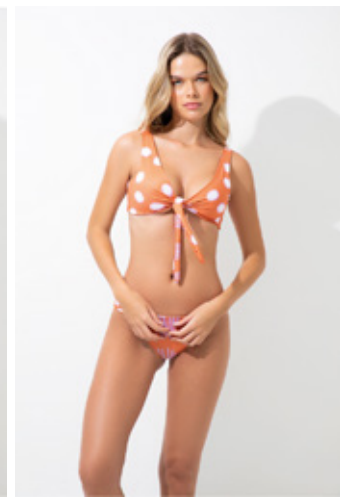
Skirt  
**LUA 441**

Long wrap skirt or dress with ruffles.

**ONE SIZE**  
**S/M**  
**M/L**

90.3% Polyester  
9.7% Elastane





## Bali

Halter Twisted Top  
MDL 497

**TOP**  
Reversible halter twisted top. Ties in front or back. Multiple ways to style.

**BOTTOM**  
Seamless bottom with twisted sides. Intermediate coverage

**Size: S M L**

81 % Recycled Polyester  
19 % Lycra  
UPF 50UV Protection





## Bali

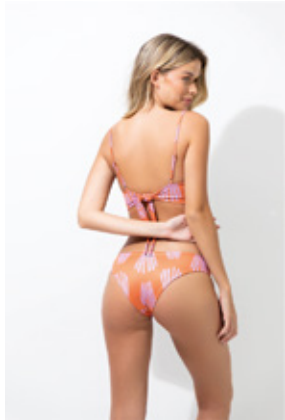
Knotted Bikini  
**MDL 498**

**TOP**  
Seamless top with knots and front cut out. Adjustable strings on shoulders. Ties on back.

**BOTTOM**  
Seamless bottom with. Intermediate coverage.

**Size: S M L**

81% Recycled Polyester  
19% Lycra  
UPF 50UV Protection



## Bali

Skirt  
**LUA 442**

Long mesh skirt with side neckline, bottom ruffle & hoop on waist.

**ONE SIZE**  
**S/M**  
**M/L**

100% Polyester



## Bali

Cut Outs Dress  
**LUA 443**

Linen like mid dress with side cutouts and front hoop accessory, ties on back.

**S/M**  
**M/L**

100% Polyester





## Bali

Skirt  
**LUA 444**

Mid line skirt with  
rubber waistband.

**ONE SIZE**  
**S/M**  
**M/L**

90.3% Polyester  
9.7% Elastane



## Bali

Set  
**LUA 445**

**TOP**  
Strapless top with  
smocked back and  
off shoulder puffy  
sleeves.

**SKIRT**  
Mid line skirt with  
rubber waistband.

**ONE SIZE**  
**S/M**  
**M/L**  
90.3% Polyester  
9.7% Elastane







## Polka Lavander

One Shoulder  
Knott Bikini  
**MDL 499**

### TOP

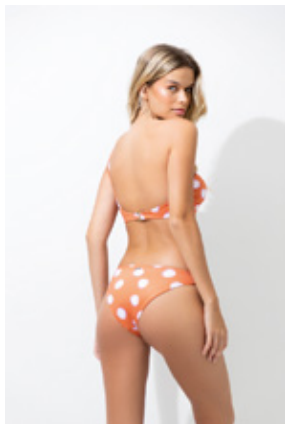
One Shoulder front  
knot top with  
removable pads.

### BOTTOM

Seamless bottom.  
Intermediate  
coverage.

**Size: S M L**

81 % Recycled Polyester  
19 % Lycra  
UPF 50UV Protection



## Polka Lavander

Bralette Top  
**MDL 500**

### TOP

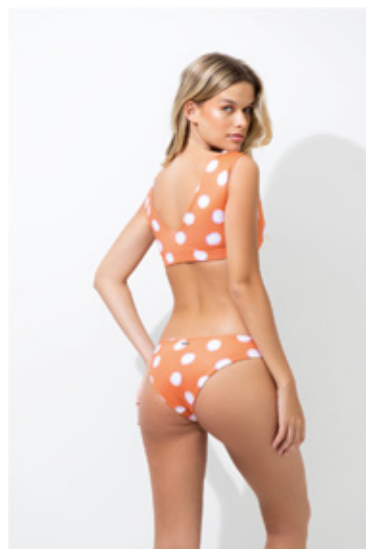
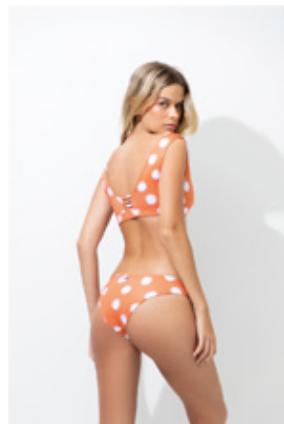
Seamless bralette  
top. 2 ways to style

### BOTTOM

Seamless bottom  
with. Intermediate  
coverage.

**Size: S M L**

81 % Recycled Polyester  
19 % Lycra  
UPF 50UV Protection





## Polka Lavander

Chiffon Cover Up  
**LUA 446**

Long Sleeve Chiffon Kimono with smocked cuffs, puffy sleeves & string to tie at waist.

**ONE SIZE**  
**S/M**  
**M/L**

100% Polyester



## Polka Lavander

Wrap Skirt  
**LUA 447**

Long chiffon wrap skirt or dress with ruffle and adjustable waistband. Multiple ways to style.

**ONE SIZE**  
**S/M**  
**M/L**

100% Polyester



## Polka Lavander

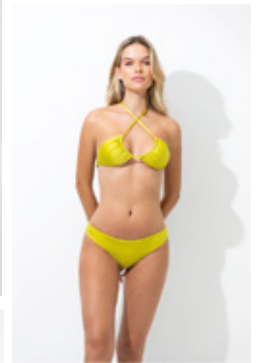
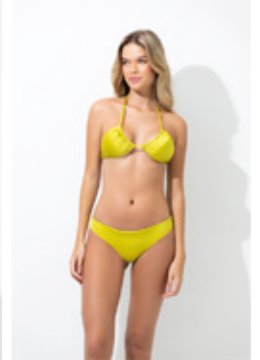
Dress  
**LUA 448**

Maxi dress with bottom ruffle. Smocked back and adjustable strings on shoulders

**S/M**  
**M/L**

90.3% Polyeste  
9.7% Elastane





## Bernarda

Twisted Bikini

**MDL 501**

### TOP

Twist front texture bandeau with removable pads and straps. Ties on back.

### BOTTOM

Seamless bottom. Intermediate coverage.

**Size: S M L**

81 % Recycled Polyester  
19 % Lycra



## Lime

Triangle Bikini

**MDL 502**

### TOP

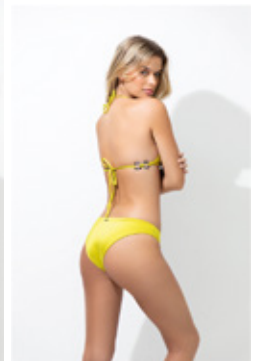
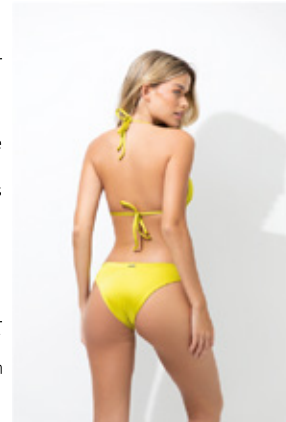
Seamless triangle top with removable pads and resin hoops. Ties on back. Multiple ways to style.

### BOTTOM

Basic seamless bottom. Intermediate coverage.

**Size: S M L**

81 % Recycled Polyester  
19 % Lycra  
UPF 50UV Protection





## Mallorca

Triangle Braid Bikini

**MDL 503**

### TOP

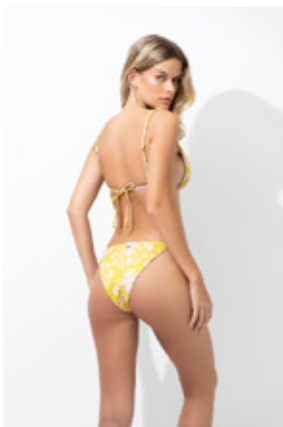
Seamless triangle top with removable pads and adjustable braided strings. Ties on back.

### BOTTOM

Seamless bottom with braided strings on sides. Intermediate coverage.

**Size: S M L**

81 % Recycled Polyester  
19 % Lycra  
UPF 50UV Protection



## Mallorca

Bralette Bikini

**MDL 504**

### TOP

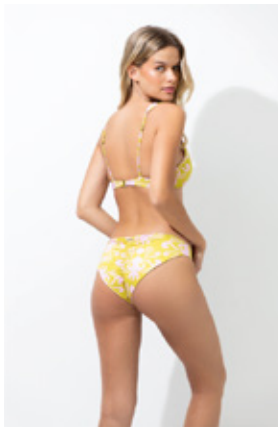
Seamless bralette top with removable pads and adjustable strings.

### BOTTOM

Seamless bottom with ruched on back. Intermediate coverage.

**Size: S M L**

81 % Recycled Polyester  
19 % Lycra  
UPF 50UV Protection



## Mallorca

Chiffon Cover Up

**LUA 449**

Long bell sleeve chiffon kimono with bottom ruffle & buttons in the front.

**ONE SIZE**

**S/M**

**M/L**

100% Polyester





## **Mallorca**

Skirt  
**LUA 450**  
Long skirt with ruffle at the bottom and neckline in the front.  
Rubber waistband.

**ONE SIZE**  
**S/M**  
**M/L**

90.3% Polyester  
9.7% Elastane



## **Mallorca**

Set  
**LUA 451**  
**TOP**  
Crop top with braid stings and smocked at back.  
**SKIRT**  
Long skirt with ruffle at the bottom and neckline in the front.  
Rubber waistband.

**ONE SIZE**  
**S/M**  
**M/L**  
100% Polyester

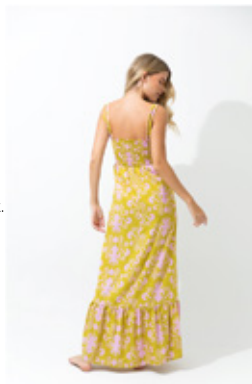


## **Mallorca**

Dress  
**LUA 452**  
Maxi dress with bottom ruffle, front cutout and smocked back.  
Available also in black.

**S/M**  
**M/L**

90.3% Polyester  
9.7% Elastane

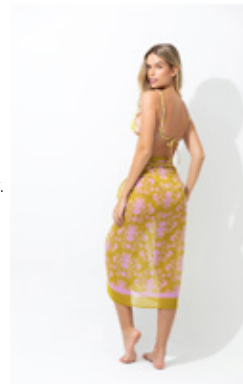


## **Mallorca**

Sarong  
**LUA 453**  
Long multifunctional adjustable see-through sarong.

**ONE SIZE**

100% Polyester





## Capri

Bandeau  
**MDL 505**

### TOP

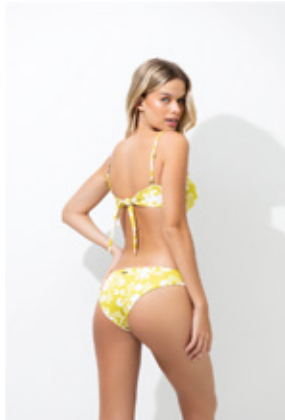
Seamless bandeau with removable pads and hexagon accessory in the front. Adjustable and removable strings. Ties on back.

### BOTTOM

Seamless basic bottom. Intermediate coverage.

**Size: S M L**

81 % Recycled Polyester  
19 % Lycra



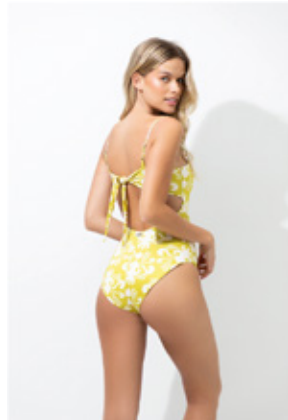
## Capri

One Piece  
**MDL 506**

Seamless open back one piece with internal support, strips with resine accessory. Ties on back.

**Size: S M L**

81 % Recycled Polyester  
19 % Lycra





## Capri

Chiffon Cover Up  
**LUA 454**

Long Sleeve Chiffon Kimono with open sleeves, ruffles at the bottom and waist tassel string

**ONE SIZE**  
**S/M**  
**M/L**

100% Polyester



## Capri

Skirt  
**LUA 455**

Long skirt with ruffles & rubber waistband.

**ONE SIZE**  
**S/M**  
**M/L**

90.3% Polyester  
9.7% Elastane



## Capri

Set  
**LUA 456**

**TOP**  
Linen like button shirt.

**BOTTOM**  
Short Linen like wrap skirt.

**S/M**  
**M/L**

100% Polyester



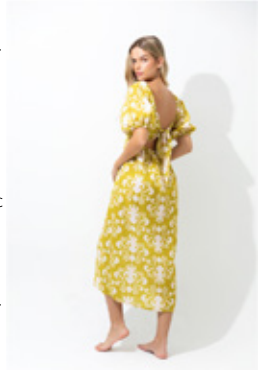
## Capri

Puffy Dress  
**LUA 457**

Linen like mid dress with puffy sleeves, knotted twist in the front and smocked fabric on the back. 2 ways to style.

**S/M**  
**M/L**

100% Polyester





## Santorini

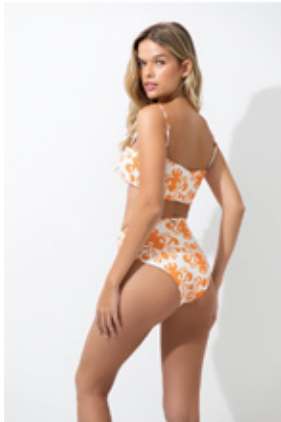
Bralette Top  
**MDL 507**

**TOP**  
Bralette with removable straps & pads. 2 ways to style.

**BOTTOM**  
High waist seamless bottom with front knot.

**Size: S M L**

81 % Recycled Polyester  
19 % Lycra  
UPF 50UV Protection



## Santorini

Wrap skirt  
**LUA 458**

Long Wrap skirt or dress with adjustable waistband.

**ONE SIZE**  
**S/M**  
**M/L**

90.3% Polyester  
9.7% Elastane







## Kauai

One Shoulder Bikini  
**MDL 508**

**TOP**  
One shoulder top with removable pads. 2 ways to style.

**BOTTOM**  
Seamless bottom with straps and cutout on the sides. Intermediate coverage.

**Size: S M L**

81 % Recycled Polyester  
19 % Lycra  
UPF 50UV Protection



## Kauai

Chiffon Cover Up  
**LUA 459**

Long Chiffon Kimono with smocked cuffs and uneven ruffle. Adjustable waist string with tassel at ends.

**ONE SIZE**  
**S/M**  
**M/L**

100% Polyester



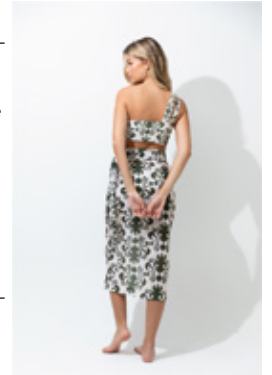
## Kauai

Cross Skirt  
**LUA 460**

Mid wrap linen like skirt. Adjustable waistband on side.

**ONE SIZE**  
**S/M**  
**M/L**

100% Polyester





## Kauai

Sarong  
**LUA 461**

Long multifunctional adjustable see-through sarong.

**ONE SIZE**

100% Polyester



## Kauai

Skirt  
**LUA 462**

Long skirt with uneven ruffle.

**ONE SIZE**  
**S/M**  
**M/L**

90.3% Polyester  
9.7% Elastane



## Kauai

Set  
**LUA 463**  
**TOP**

Halter style crop top with smocked back . Ties on neck.

**SKIRT**

Long skirt with uneven ruffle

**ONE SIZE**  
**S/M**  
**M/L**

90.3% Polyester  
9.7% Elastane





## Lassa

Cross Bikini

**MDL 509**

### TOP

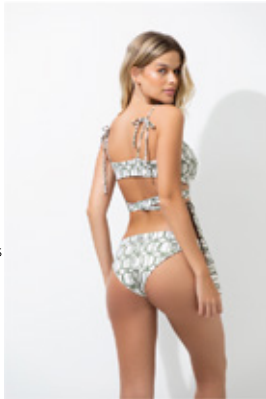
Wrap bandeau with removable pads and adjustable straps on shoulders. Ties on back or front. 2 ways to style.

### BOTTOM

Basic reversible seamless bottom. Intermediate coverage.

### Size S M L

81 % Recycled Polyester  
19 % Lycra  
UPF 50UV Protection



## Lassa

Chiffon Cover Up

**LUA 464**

Pleated Sleeves

Chiffon Kimono with pleated bottom ruffle and adjustable waist string with tassel at ends.

### ONE SIZE

**S/M**

**M/L**

100% Polyester



## Lassa Oliva

Ruffle Bikini

**MDL 510**

### TOP

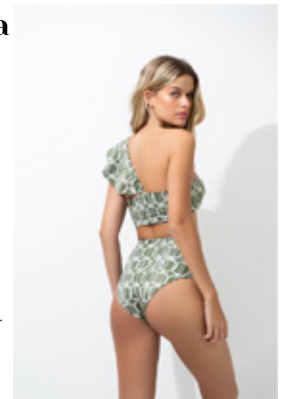
One shoulder ruffle bandeau.

### BOTTOM

High Rise seamless bottom. Moderate coverage.

### Size S M L

81 % Recycled Polyester  
19 % Lycra  
UPF 50UV Protection





## Lassa Oliva

Pants  
**LUA 465**

Loose pants with  
rubber in  
waistband.

**S/M**  
**M/L**

90.3% Polyester  
9.7% Elastane



## Lassa Oliva

Dress  
**LUA 466**

Maxi dress with  
buttons,  
coordinated ruffles  
and smocked back.

**S/M**  
**M/L**

90.3% Polyester  
9.7% Elastane





## Olivia

One Shoulder Bikini  
**MDL 511**

**TOP**  
One Shoulder bikini with front hoop and removable pads.

**BOTTOM**  
Seamless bottom with Intermediate coverage.

**Size: S M L**

81 % Recycled Polyester  
19 % Lycra  
UPF 50UV Protection



## Simonetta

Ruffle Bikini  
**MDL 512**

**TOP**  
One shoulder bandeau with black and beige ruffle.

**BOTTOM**  
High Rise seamless bottom. Moderate coverage

**Size: S M L**

81 % Recycled Polyester  
19 % Lycra  
UPF 50UV Protection



## Flavia

Pants  
**LUA 467**

Black loose pants with rubber in waistband.

**S/M  
M/L**

90.3% Polyester  
9.7% Elastane



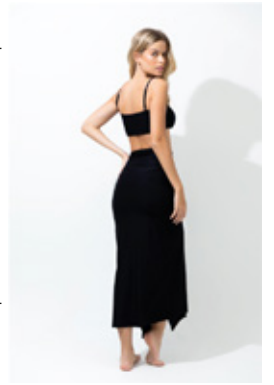
## Monique

Skirt  
**LUA 468**

Black lycra skirt with front ruffle and draped waist.

**S/M  
M/L**

89% Polyester  
11% Elastane





## Formentera

Dress  
**LUA 469**

Short sleeves maxi dress with cutouts on the sides and bottom ruffles. Ties on the back. Two ways to style off shoulder or regular.

**S/M**  
**M/L**

90.3% Polyester  
9.7% Elastane



## Emma

Skirt  
**LUA 470**

Long wrap skirt with uneven ruffle and adjustable waistband on the side.

**ONE SIZE**  
**S/M**  
**M/L**

90.3% Polyester  
9.7% Elastane



## Celine

Set  
**LUA 471**  
**TOP**

Halter style crop top with smocked back. Ties on neck.

**SKIRT**

Long wrap skirt with uneven ruffle and adjustable waistband on the side.

**ONE SIZE**  
**S/M**  
**M/L**

90.3% Polyester  
9.7% Elastane





## Martinique

Fix Cup High Waist Bikini  
**MDL 513**

### TOP

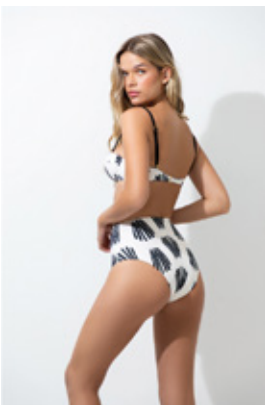
Fix cup top with balconette neckline, removable and adjustable straps.

### BOTTOM

Seamless high waist bottom. Moderate coverage

**Size S M L**

81 % Recycled Polyester  
19 % Lycra  
UPF 50UV Protection



## Martinique

Fix Cup Basic Bikini  
**MDL 514**

### TOP

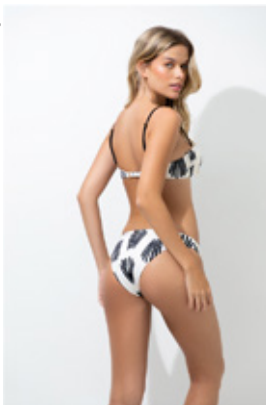
Fix cup top with balconette neckline, removable and adjustable straps

### BOTTOM

Seamless basic bottom. Intermediate coverage.

**Size S M L**

81 % Recycled Polyester  
19 % Lycra  
UPF 50UV Protection



## Martinique

Triangle Bikini  
**MDL 515**

### TOP

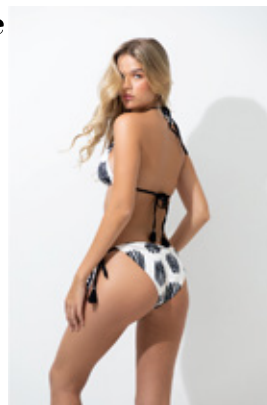
Seamless triangle top with removable pads, adjustable back and neck ties. Tassel and beads at string end. Multiple ways to style.

### BOTTOM

Seamless side tie bottom with tassel and beads at string ends and ruched on back. Intermediate coverage.

**Size S M L**

81 % Recycled Polyester  
19 % Lycra  
UPF 50UV Protection





## Martinique

Chiffon Cover Up  
**LUA 472**

Long Chiffon Kimono with loose sleeves and string to tie at waist with tassel on ends.

**ONE SIZE**  
**S/M**  
**M/L**

100% Polyester



## Martinique

Sarong  
**LUA 473**

Long multifunctional adjustable see-through sarong with tassel on upper ends

**ONE SIZE**

100% Polyester



## Martinique

Skirt  
**LUA 474**

Mid linen like line skirt. With rubber waistband.

**ONE SIZE**  
**S/M**  
**M/L**

100% Polyester







## Martinique

Set  
**LUA 475**

### TOP

Halter crop top with cut out on the front. Ties on neck and tassels on string ends.

### SKIRT

Mid length linen like skirt. With rubber waistband.

### ONE SIZE

**S/M**  
**M/L**

100% Polyester



## Martinique

Set  
**LUA 476**

### TOP

Linen like button shirt. Two ways to style tied & untied.

### BOTTOM

Linen like short with side pockets and rubber waistband.

### ONE SIZE

**S/M**  
**M/L**

100% Polyester



## Martinique

Dress  
**LUA 477**

Short Sleeves maxi dress with ruffle. Ties in front & back. Two ways to style off shoulder or regular.

**S/M**  
**M/L**

90.3% Polyester  
9.7% Elastane





## Navarino

Bralette Bikini  
MDL 516

### TOP

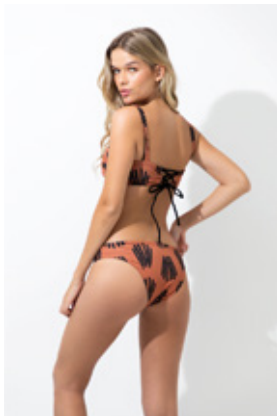
Seamless draped bralette with adjustable lace style on back. 2 ways to style.

### BOTTOM

Seamless basic bottom. Intermediate coverage.

Size **S M L**

81 % Polyester  
19 % Lycra  
UPF 50UV Protection



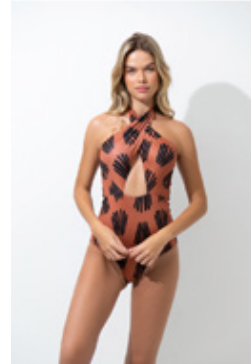
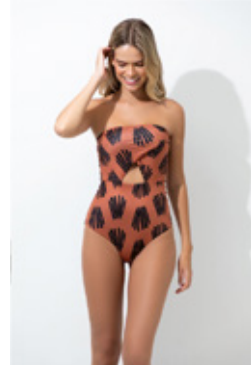
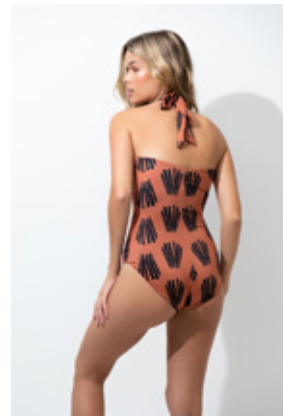
## Navarino

One Piece  
MDL 517

Seamless one piece with front cut out and removable pads. Multiple ways to style.

Size **S M L**

81 % Recycled Polyester  
19 % Lycra  
UPF 50UV Protection





## Navarino

Mesh Skirt  
**LUA 478**

Mesh skirt with  
front ruffle and  
draped waist.

**S/M**  
**M/L**

---

100% Polyester





## Deia

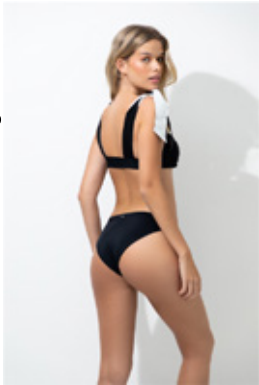
Brallette Ties Bikini  
**MDL 518**

**TOP**  
Draped bralette top with black and beige adjustable ties on shoulders.

**BOTTOM**  
Basic seamless bottom. Intermediate coverage.

**Size: S M L**

81 % Polyester  
19 % Lycra  
UPF 50UV Protection



## Polka Black

Chiffon Cover Up  
**LUA 479**

Polka Chiffon Kimono with string to tie at waist and tassel on end.

**ONE SIZE**  
**S/M**  
**M/L**

100% Polyester



## Polka Black

Skirt  
**LUA 480**

Long sea through chiffon polka wrap skirt or dress with bottom ruffles and adjustable waistband.

**ONE SIZE**  
**S/M**  
**M/L**

100% Polyester



## Palawan

Cover up  
**LUA 481**

Long sleeve kimono with lace details, bottom ruffle, puffed sleeves and smocked cuffs. Adjustable waist string with tassel at end.

100 % Cotton





## Talia

Linen Cover up  
**LUA 482**

Cross linen dress  
with front neckline.

---

49.27% Rayon  
40.57 % Linen  
10.15 % Cotton



## Talia

Linen Wrap Skirt  
**LUA 483**

Mid linen wrap skirt  
with adjustable  
waistband.

---

49.27% Rayon  
40.57 % Linen  
10.15 % Cotton



## Kokos

Coconut Dress  
**LUA 484**

Cross body linen  
cover up with  
coconut hoops on  
shoulders.  
Adjustable string on  
side.





## Flech

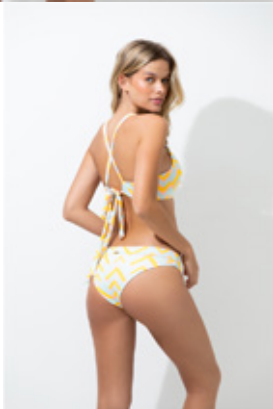
Triangle Bikini  
**MDL 519**

**TOP**  
Seamless banded triangle top. Ties on back.

**BOTTOM**  
Basic seamless bottom. Intermediate coverage.

**Size: S M L**

81 % Recycled Polyester  
19 % Lycra  
UPF 50UV Protection



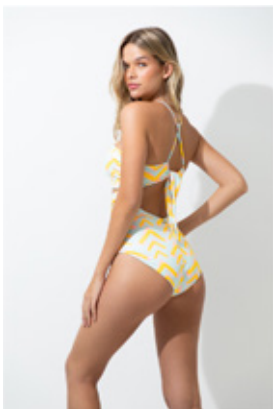
## Flech

Lace Style Trikini  
**MDL 520**

Seamless One Piece with cutouts in the front. Ties on neck & back.

**Size S M L**

81 % Recycled Polyester  
19 % Lycra  
UPF 50UV Protection





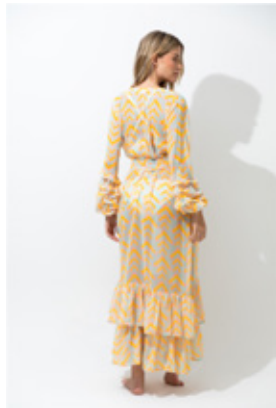
## Flech

Chiffon Cover Up  
**LUA 485**

Long Sleeve Chiffon Kimono with ruffled fabric in cuffs, ruffles at the bottom & string to tie at waist.

**ONE SIZE**  
**S/M**  
**M/L**

100% Polyester



## Flech

Wrap skirt  
**LUA 486**

Long wrap skirt or dress with double ruffle. Adjustable waistband.

**ONE SIZE**  
**S/M**  
**M/L**

90.3% Polyester  
9.7% Elastane



## Flech

Dress  
**LUA 487**

Maxi line dress with neckline on the side. Smocked back.

**S/M**  
**M/L**

90.3% Polyester  
9.7% Elastane





## Menorca

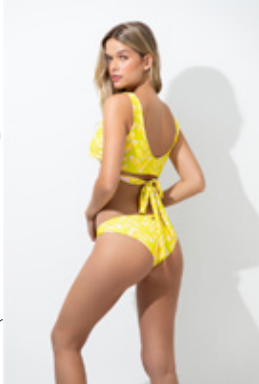
Wrap Triangle Bikini  
**MDL 521**

**TOP**  
Seamless wrap triangle top. Ties on back or front

**BOTTOM**  
Basic seamless bottom. Intermediate coverage.

**Size: S M L**

81 % Recycled Polyester  
19 % Lycra  
UPF 50UV Protection



## Menorca

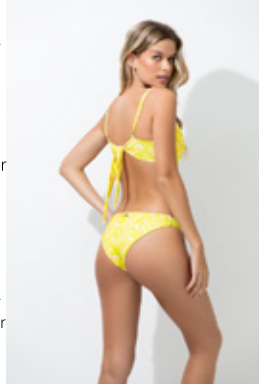
Knotted Bikini  
**MDL 522**

**TOP**  
Front Knotted seamless bralette with front cut out. Adjustable shoulder strings & back ties.

**BOTTOM**  
Seamless bottom. Intermediate coverage.

**Size: S M L**

81 % Recycled Polyester  
19 % Lycra  
UPF 50UV Protection



## Menorca

Mesh Dress  
**LUA 488**

Long sleeve mesh dress with neckline on both sides.

**ONE SIZE**  
**S/M**  
**M/L**

100% Polyester



## Menorca

Skirt  
**LUA 489**

Long ruffle skirt with buttons & rubber waistband.

**ONE SIZE**  
**S/M**  
**M/L**

90.3% Polyester  
9.7% Elastane







## Martinica

Knotted Triangle Bikini

**MDL 523**

### TOP

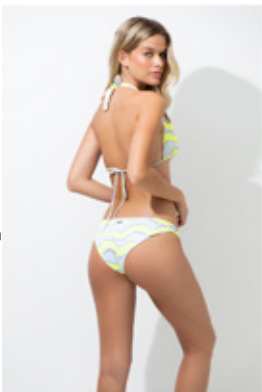
Seamless triangle knotted top. Ties at neck and back.

### BOTTOM

Seamless bottom with knot details on sides.

**Size: S M L**

81 % Polyester  
19 % Lycra  
UPF 50UV Protection



## Martinica

Elastic Bralette Bikini  
**MDL 524**

### TOP

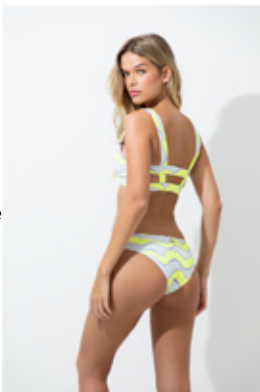
Seamless bralette top with front cutout and wide elastic base.

### BOTTOM

Seamless basic bottom. Intermediate Coverage.

**Size: S M L**

81 % Recycled Polyester  
19 % Lycra  
UPF 50UV Protection



## Martinica

Chiffon Cover Up  
**LUA 490**

Long Sleeve Chiffon Kimono with smocked cuffs & string to tie at waist.

**ONE SIZE**  
**S/M**  
**M/L**

100% Polyester



## Martinica

Dress  
**LUA 491**

Maxi dress with bottom ruffle and smocked fabric on back.

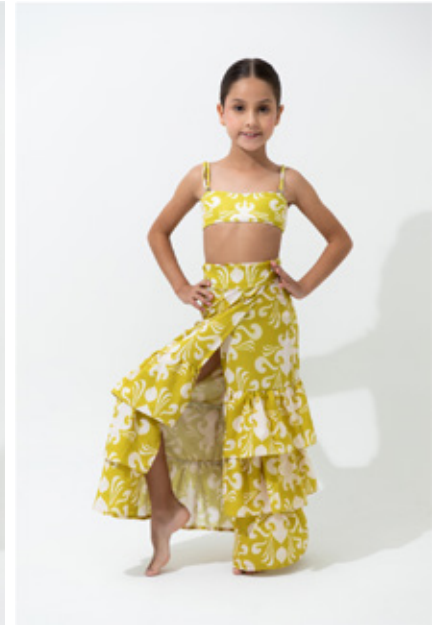
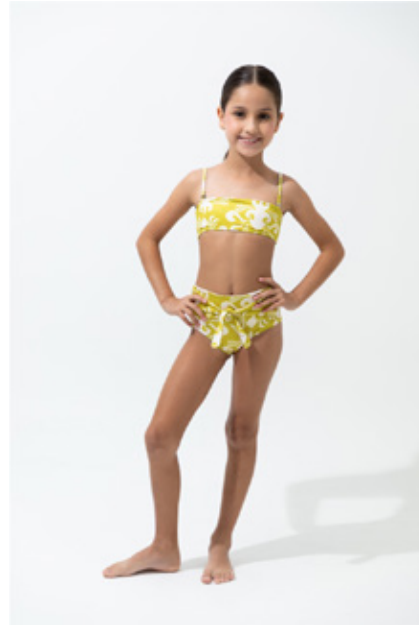
**S/M**  
**M/L**

90.3% Polyester  
9.7% Elastane





Kids  
& Family  
MATCHING



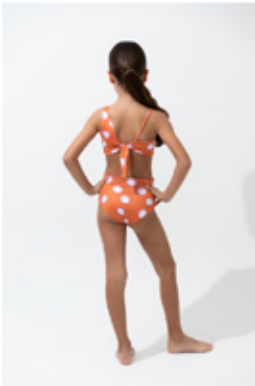
## Polka Lavander

One Piece

One piece with front and back cutouts.  
Ties on back  
Size

**Size:**  
2-4-6-8-10-12-14-16

81 % Recycled Polyester  
19 % Lycra  
UPF 50 UV protection



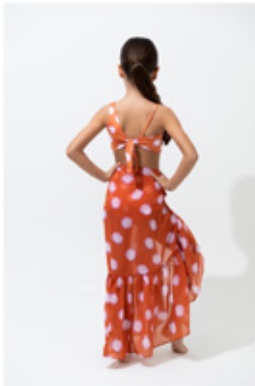
## Polka Lavander

Skirt

Long skirt with bottom ruffle & adjustable waistband.

**Size:**  
2 - 16

90.3% Polyester  
9.7% Elastane



## Capri Bikini

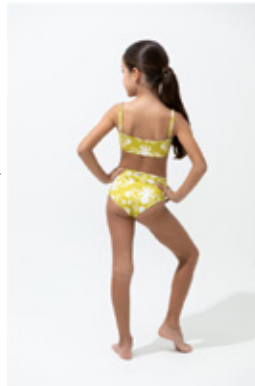
Bikini

**TOP**  
Seamless bralette bikini.

**BOTTOM**  
Seamless high waist bottom with adjustable ties on waist.

**Size:**  
2-4-6-8-10-12-14-16

81 % Recycled Polyester  
19 % Lycra  
UPF 50UV Protection



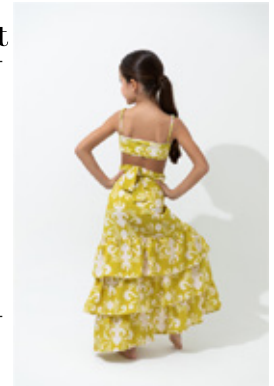
## Capri Skirt

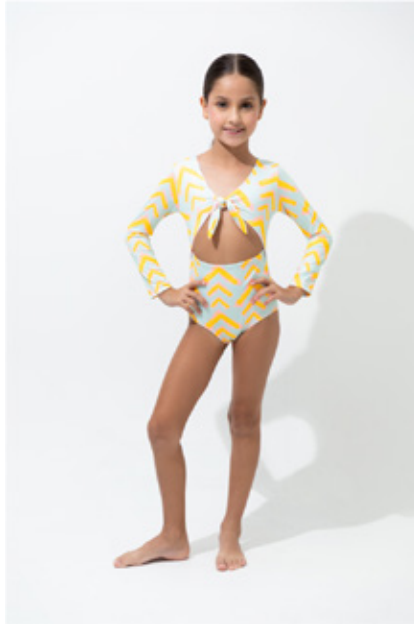
Skirt

Long skirt with bottom ruffles & adjustable waistband.

**Size:**  
2 - 16

90.3% Polyester  
9.7% Elastane





## Lassa Oliva

Ruffle Bikini

### TOP

One shoulder ruffle bralette.

### BOTTOM

Seamless basic bottom.

### Size:

2-4-6-8-10-12-14-16

81% Recycled Polyester  
19% Lycra  
UPF 50UV protection



## Lassa Oliva Skirt

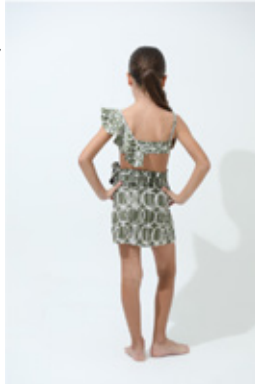
Skirt

Mini skirt with adjustable waistband.

### Size:

2-16

90.3% Polyester  
9.7% Elastane



## Flech Girl

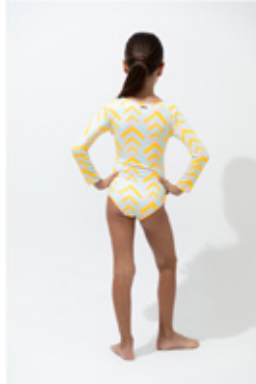
One Piece

Long sleeve one piece with cut out and ties in front.

### Size:

2-4-6-8-10-12-14-16

81% Recycled Polyester  
19% Lycra  
UPF 50 UV protection



## Flech Skirt

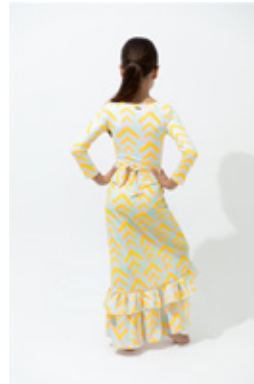
Skirt

Long wrap skirt or dress with ruffle. Adjustable waistband.

### Size:

2-16

0.3% Polyester  
9.7% Elastane





## Martinica

Bikini

### TOP

Seamless bralette top with front cutout, wide elastic base and Ruffles on shoulders. Ties on back.

### BOTTOM

Seamless basic bottom.

**Size:**  
**2-4-6-8-10-12-14-16**

81 % Recycled Polyester  
19% Lycra  
UPF 50UV protection



## Martinica

Skirt

Long wrap skirt or dress. Adjustable waistband.

**Size:**  
**2 - 16**

90.3% Polyester  
9.7% Elastane





### **Polka Lavander Trunk**

Swim trunk with  
elastic waistband.  
Two back eyelet.

**Size:**  
**4-6/ 6-8/10-12/14-16**

---

100 % Polyester



### **Capri Trunk**

Swim trunk with  
elastic waistband.  
Two back eyelet.

**Size:**  
**4-6/ 6-8/10-12/14-16**

---

100 % Polyester



### **Flech Trunk**

Swim trunk with  
elastic waistband.  
Two back eyelet.

**Size:**  
**4-6/ 6-8/10-12/14-16**

---

100 % Polyester



### **Lassa Oliva Trunk**

Swim trunk with  
elastic waistband.  
Two back eyelet.

**Size:**  
**4-6/ 6-8/10-12/14-16**

---

100 % Polyester



### **Martinique Trunk**

Swim trunk with  
elastic waistband.  
Two back eyelet.

**Size:**  
**4-6/ 6-8/10-12/14-16**

---

100 % Polyester



## Polka Lavander

---

Swim trunk with elastic waistband, side pocket with zipper, back pocket with Velcro flap and one eyelet. Two back eyelets.

**Size S M L XL**

---

100 % Polyester



## Capri

---

Swim trunk with elastic waistband, side pocket with zipper, back pocket with Velcro flap and one eyelet. Two back eyelets.

**Size S M L XL**

---

100 % Polyester



## Flech

---

Swim trunk with elastic waistband, side pocket with zipper, back pocket with Velcro flap and one eyelet. Two back eyelets.

**Size S M L XL**

---

100 % Polyester



## Lassa Oliva

---

Swim trunk with elastic waistband, side pocket with zipper, back pocket with Velcro flap and one eyelet. Two back eyelets.

**Size S M L XL**

---

100 % Polyester



## Martinique

---

Swim trunk with elastic waistband, side pocket with zipper, back pocket with Velcro flap and one eyelet. Two back eyelets.

**Size S M L XL**

---

100 % Polyester



MAR DE LUA

[info@mardelua.com](mailto:info@mardelua.com)

+57 313 5460642

[www.mardelua.com](http://www.mardelua.com)