

THE MAGIC GRINDER

User Manual

Thank you
for trusting
The Magic Grinder!

It has Magic in its name for a reason:
we've done innovative design for you
to get the most out of your herbs.

[www.tmgrinder.com](https://tmgrinder.com)



To get your
extended
warranty now,
please sign up at
<https://tmgrinder.com/hello>

IMPORTANT:

- Please read this manual before using TMG, and keep the manual for reference.
- If you have any questions about the grinder or face any issues when using it, feel free to contact us directly for answers and assistance.
- Don't use TMG in any ways that are not described in this manual.

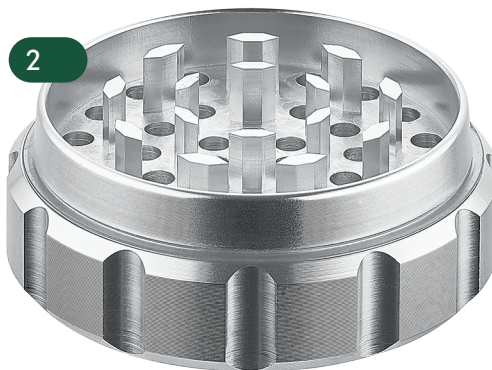
Components:

1 Magnetic lid

3 Sieving mesh

2 Grinding plate

4 Bottom drawer



Maximum kief collection

Our patented design maximized pollen separation and accumulation.

The nonsticky metal, the shaking ball inside, and the meshed layer in the middle work together to collect all of the pollen (the most potent component) in The Magic Grinder's bottom drawer.

With other grinders, you run the risk of losing most of the kief in the grinding process. TMG carefully accumulates every precious mote for you.

What's so magic about The Magic Grinder

Smooth metal

aluminum alloy preventing kief from sticking to the teeth or the walls

Wide design

of 2.6 inches across to spread herbs out and maximize grinding area

CNC machined

a high-precision screw thread ensuring smooth helical motion

Handy grip

cogged edges fit neatly into hands and prevent any slipping

Magnetic lid

stays where it should as you do the grinding and prevents spills

Agitator ball

shake it to make sure all the precious content makes it through

Fine mesh

separating the flower parts from the concentrated pollen

HOW TO USE



How to use

- 1 Pull the lid up to open the grinder.
- 2 Place the bud (flower, herb) onto the teeth of the grinding plate.
- ! IMPORTANT: Do not place the bud at the center. Make sure the material that you want to grind is placed onto the teeth, i.e. between the center and the edge of the grinder.
- 3 Place the lid back onto the grinder.
- 4 Start grinding by holding the bottom part of the grinder with one hand and making clockwise and counter-clockwise turns of the top part of the grinder with the other hand. Alternatively, you can try making clockwise and counterclockwise turns with your both hands as you hold the grinder in them.
- 5 Shake the grinder for about 10 seconds. You will hear the agitator ball moving inside: its job is to make sure all of the ground material falls through to the lower parts.
- 6 Optionally, do some extra grinding (see step 4) and give the grinder another shake (see step 5).
- 7 Pull the lid up to open the grinder.
- 8 Unscrew (by turning it consistently counterclockwise) and remove the grinding plate.
- 9 Carefully remove the mesh with the coarser herbs ground up on it: these are ready to be used.
- 10 Find the finer kief ("pollen") sieved and resting in the bottom drawer: you can remove it carefully with a special scraper or keep it in and store it right in the grinder.
- 11 Enjoy the herb in your favorite way now that it's neatly ground and thoroughly separated.

Maintenance

- 1 For regular cleanups, disassemble the grinder and remove plant residue from its parts using a scraper or a dry cloth (or both).
- 2 For a deeper cleanup, do step 1 and then soak the parts of the grinder in isopropyl alcohol for about 30 minutes.
- 3 Rinse the parts of the grinder in hot water and remove any remaining plant material with a scraper.
- 4 Let the parts of the grinder air-dry completely.
- 5 Make sure there's no moisture left anywhere on the parts of the grinder.
- 6 Assemble the grinder: it's now ready to be used again.

Warnings

- 1 Always put the lid on before grinding. Do not attempt grinding without the lid on.
- 2 Do not insert any parts of your body into any parts of the grinder.
- 3 Do not attempt grinding any abrasive substances: the grinder is for plant materials only.
- 4 Do not overload the grinder.
- 5 Keep the grinder away from direct sunlight, heat sources, flammable substances, and open fire.
- 6 Always disassemble the grinder before cleaning it.
- 7 Keep the grinder completely dry. Moisture can ruin the ground material.