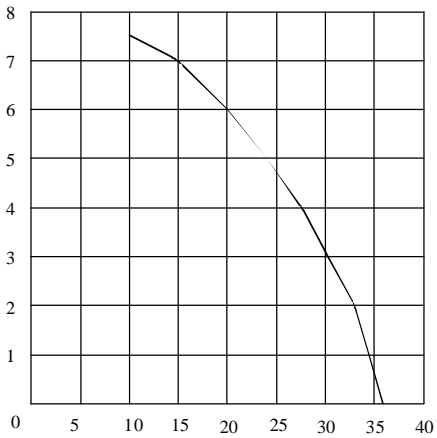
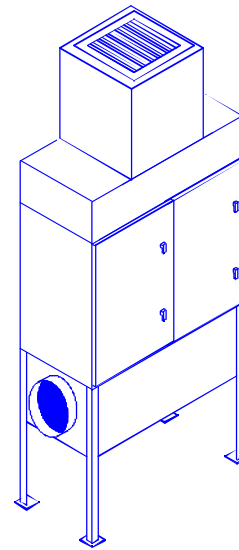


PRESSURE IN. W.G.



CFM X's 100



SHEET TITLE: AZTech OM36X2V -3HPDD

DRWG. NO.: OM36V23HP-0611 DRAWN BY: TAA

DATE: 06/23/15 SCALE: NTS

SPECIFICATIONS:

DIMENSIONS: 117"H X 52" W X 26" D

MOTOR: 3 HP 208-230/460/3/60, 8.4-7.6/3.8 FLA

CFM: 3,000 CFM @ 3.0" W.G.

ELECTRICAL: WIRED TO JCT. BOX

BLOWER: DIRECT DRIVE BI WHEEL

CONSTRUCTION: 12 & 14 GA POWDER COATED STEEL FRAME, 16 GA STEEL DOOR, 16 GA. STEEL PANELS, ADJ. COMPRESSION HINGES AVAILABLE, 1-1/2 NPT DRAIN, 4-WAY ALUMINUM EXHAUST GRILLE, CAM DOOR AND FILTER LATCHES

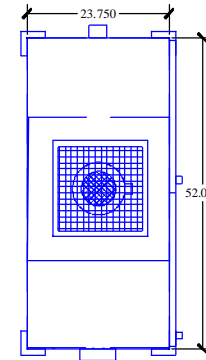
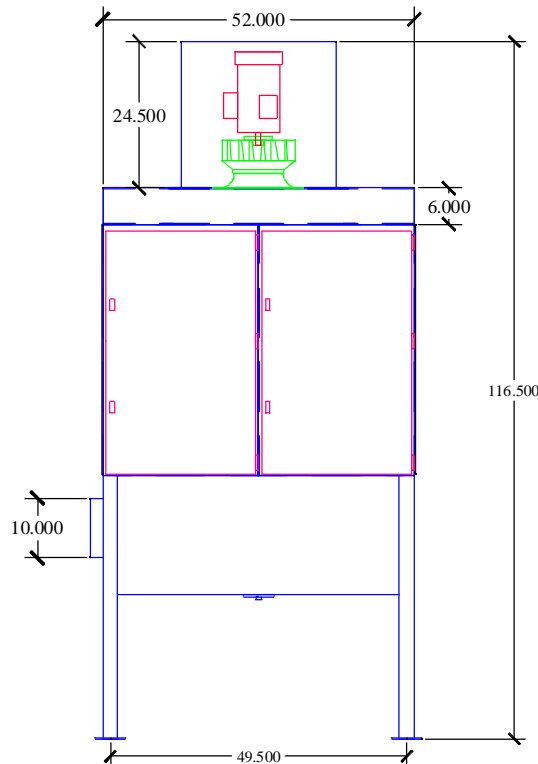
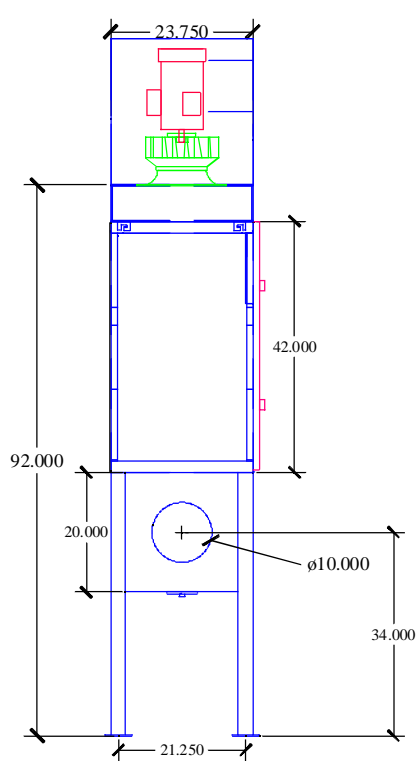
STD. FILTERS: (2) 2" BAFFLE FILTER, (2) 2" MIST ELIMINATORS, (2) 95% BAG FILTER

OPTIONAL FILTERS: (2) 2" ALUMINUM MESH FILTERS, (2) 26 LB CARBON MODULES, (2) 4" PLEATED FILTERS, (2) 2" POLY PADS, (2) 4" MIST ELIMINATORS, (2) 99.97% HEPA AFTERFILTERS

OPTIONS: FLOOR STAND, SILENCER, MAGNAHELIC PRESSURE GAUGE, MANOMETER, SOURCE CAPTURE PLENUM, SIDE DOORS, 8-15" COLLARS

WEIGHT: 798 LBS.

NOISE: 80.2 dBA



DISTRIBUTED BY:

COPYRIGHT: This document and the information contained may not be reproduced or distributed without express written consent of INDUSTRIAL MAID. Unauthorized reproduction, disclosure, or manufacturing use are prohibited by copyright law.

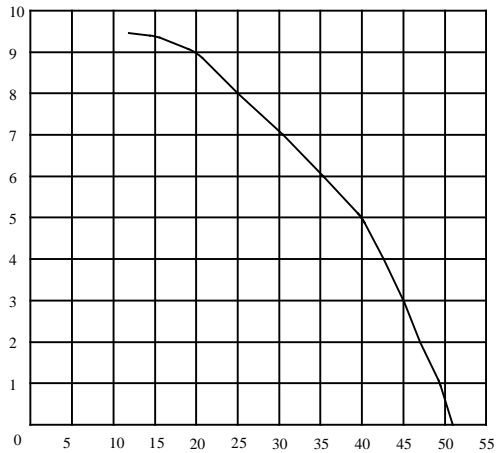


INDUSTRIAL MAID

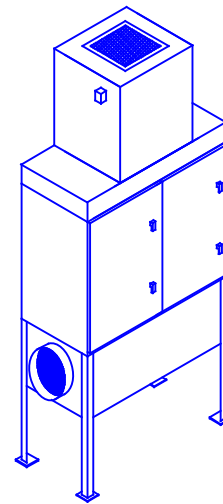
MFG. BY:

INDUSTRIAL MAID LLC
 351 S. 12TH RD.
 CORTLAND, NE 68331
 Ph. (402) 798-7116
 Fax (402) 798-7117
 www.industrial-maid.com

PRESSURE IN. W.G.



CFM X's 100



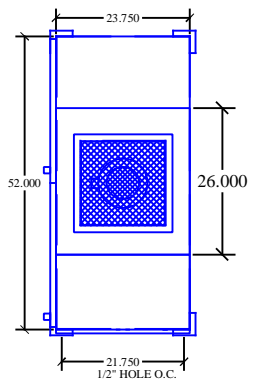
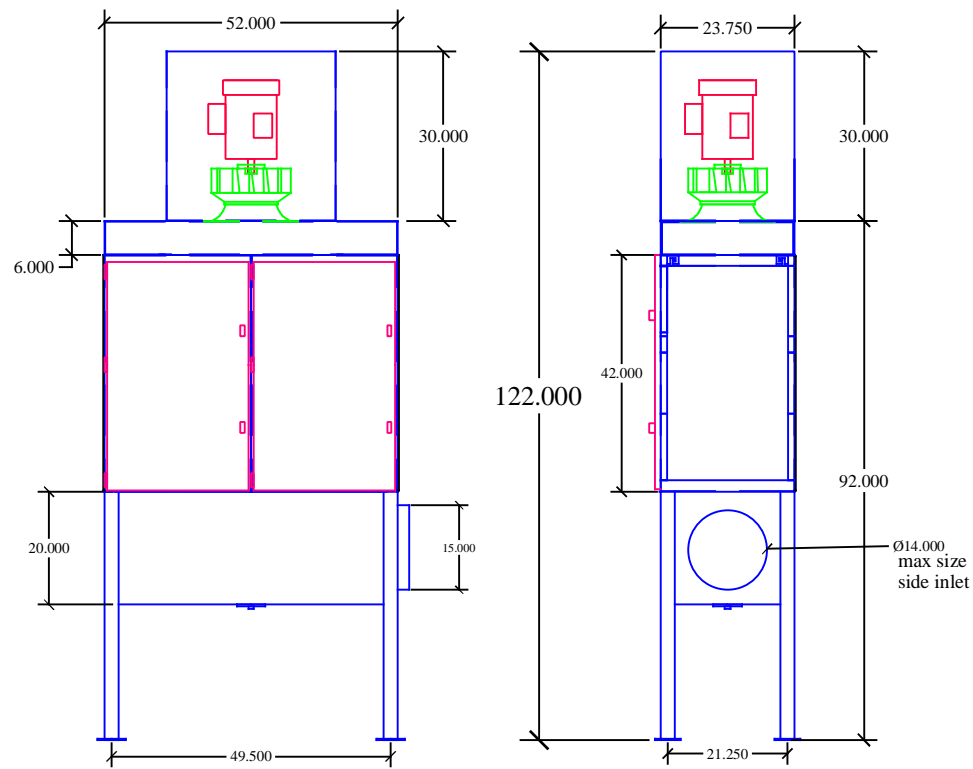
SHEET TITLE : AZTech OM36X2V -5HPDD

DRWG. NO.: OM36V25HP-101209 DRAWN BY: TAA

DATE: 10/12/09 SCALE: NTS

SPECIFICATIONS:

- DIMENSIONS: 122.5"H X 52" W X 26" D
- MOTOR: 5 HP 208-230/460/3/60, 13.6-14.4/6.2 FLA
- CFM: 4,000 CFM @ 5.0" W.G.
- ELECTRICAL: WIRED TO JCT. BOX
- BLOWER: DIRECT DRIVE AIR FOIL WHEEL
- CONSTRUCTION: 12 & 14 GA POWDER COATED STEEL FRAME. 16 GA STEEL DOOR. 3/16 POLYETHYLENE PANELS. ADJ. COMPRESSION HINGES AVAILABLE. 1-1/2 NPT DRAIN 4-WAY ALUMINUM EXHAUST GRILLE CAM DOOR AND FILTER LATCHES
- STD. FILTERS: (2) 2" BAFFLE FILTER (2) 2" MIST ELIMINATORS (2) 95% BAG FILTER
- OPTIONAL FILTERS: (2) 2" ALUMINUM MESH FILTERS (2) 26 LB CARBON MODULES (2) 4" PLEATED FILTERS (2) 2" POLY PADS (2) 4" MIST ELIMINATORS (2) 99.97% HEPA AFTERFILTERS
- OPTIONS: FLOOR STAND SILENCER MAGNAHELIC PRESSURE GAUGE MANOMETER SOURCE CAPTURE PLENUM SIDE DOORS 8-14" COLLARS
- WEIGHT: 782 LBS.
- NOISE: 80.2 dBA



DISTRIBUTED BY:

COPYRIGHT: This document and the information contained may not be reproduced or distributed without express written consent of INDUSTRIAL MAID. Unauthorized reproduction, disclosure, or manufacturing use are prohibited by copyright law.

INDUSTRIAL MAID
 MFG. BY:
INDUSTRIAL MAID LLC
 351 S. 12TH RD.
 CORTLAND, NE 68331
 Ph. (402) 798-7116
 Fax (402) 798-7117
 www.industrial-maid.com