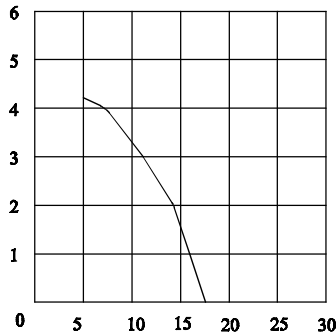
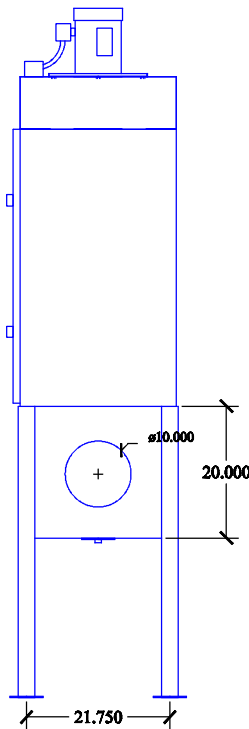
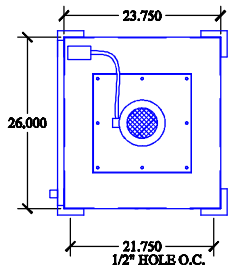
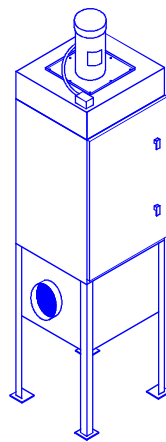


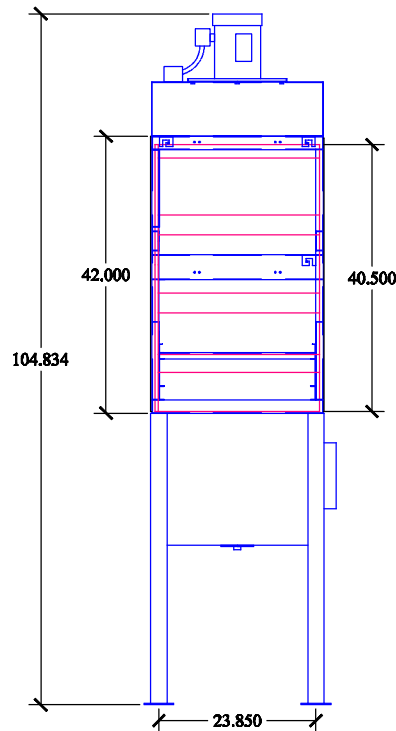
PRESSURE IN. W.G.



CFM X's 100



SIDE VIEW



FRONT VIEW

SHEET TITLE: AZTech OM36V-1.0DD

DRWG. NO: OM361DD-072207 DRAWN BY: TAA

DATE: 07/22/07 SCALE: NTS

SPECIFICATIONS:

- DIMENSIONS:** 105"H X 26" W X 23.75" D
- MOTOR:** 1 HP 208-230/460/3/60 TEFC
3.8-3.7/1.85 FLA
1 HP 115/208-230/1/60 TEFC
12.4/6.8-6.7 FLA
- CFM:** 1,000 CFM @ 3.0" W.G.
- ELECTRICAL:** WIRED TO JUNCTION BOX
- BLOWER:** DIRECT DRIVE BI BLOWER
- CONSTRUCTION:** 12 & 14 GA POWDER COATED STEEL FRAME. 16 GA STEEL DOOR. 3/16 POLYETHYLENE PANELS. FULL CARBON STEEL CONSTRUCTION AVAILABLE. 1-1/2 NPT DRAIN REAR OUTLET
- STD. FILTERS:** 2" GALV. BAFFLE
2" MIST ELIMINATOR
95% BAG FILTER
- OPTIONAL FILTERS:** 26 LB CARBON AFTERFILTER
2" POLY PREFILTER
4" PLEATED PREFILTER
2" ALUMINUM MESH PREFILTER
99.97% HEPA AFTERFILTER
- OPTIONS:** EYEBOLTS (INSTALLED)
SILENCER
MAGNAHELIC PRESSURE GAUGE
MANOMETER
SOURCE CAPTURE PLENUM
DOUBLE DOOR
4"-12" COLLAR
FLOOR STAND
- WEIGHT:** 355 LBS. (as shown)
- NOISE:** 69.5 dBA



INDUSTRIAL MAID

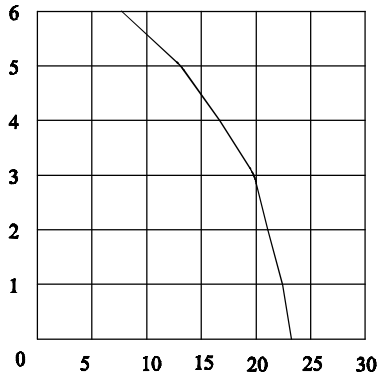
MFG. BY:

INDUSTRIAL MAID LLC
 351 S. 12TH RD.
 CORTLAND, NE 68331
 Ph. (402) 798-7116
 Fax (402) 798-7117
 www.industrial-maid.com

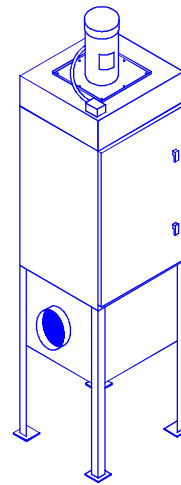
DISTRIBUTED BY:

COPYRIGHT: This document and the information contained may not be reproduced or distributed without express written consent of INDUSTRIAL MAID. Unauthorized reproduction, disclosure, or manufacturing use are prohibited by copyright law.

PRESSURE IN. W.G.



CFM X's 100



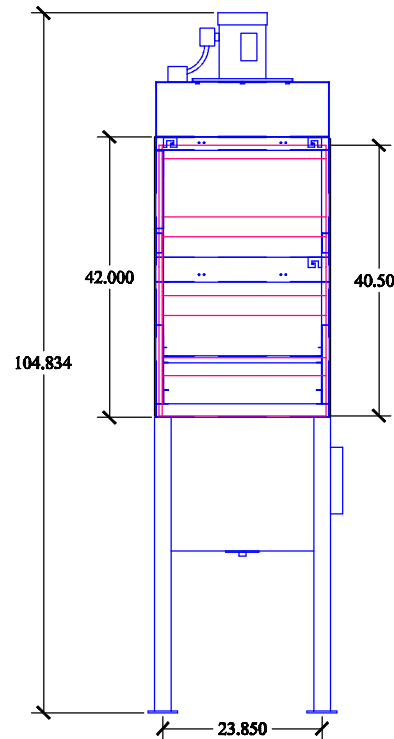
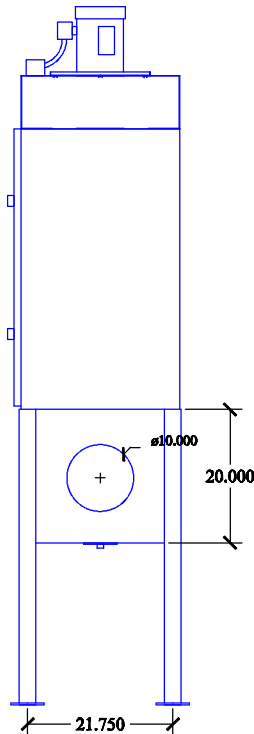
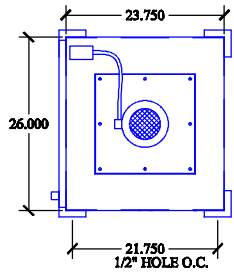
SHEET TITLE : AZTech OM36V DD

DRWG. NO.: OM36d-072207 DRAWN BY: TAA

DATE: 07/22/07 SCALE: NTS

SPECIFICATIONS:

- DIMENSIONS:** 105"H X 26" W X 23.75" D
- MOTOR:** 2 HP 208-230/460/3/60 TEFC 6.0-6.0/3.0 FLA
- CFM:** 2 HP - 1,500 CFM @ 4.5" W.G.
- ELECTRICAL:** WIRED TO JUNCTION BOX
- BLOWER:** DIRECT DRIVE BI BLOWER
- CONSTRUCTION:** 12 & 14 GA POWDER COATED STEEL FRAME, 16 GA STEEL DOOR, 3/16 POLYETHYLENE PANELS, FULL CARBON STEEL CONSTRUCTION AVAILABLE, 1-1/2 NPT DRAIN REAR OUTLET
- STD. FILTERS:** 2" GALV. BAFFLE, 2" MIST ELIMINATOR, 95% BAG FILTER
- OPTIONAL FILTERS:** 26 LB CARBON AFTERFILTER, 2" POLY PREFILTER, 4" PLEATED PREFILTER, 2" ALUMINUM MESH PREFILTER, 99.97% HEPA AFTERFILTER
- OPTIONS:** EYEBOLTS (INSTALLED), SILENCER, MAGNAHELIC PRESSURE GAUGE, MANOMETER, SOURCE CAPTURE PLENUM, DOUBLE DOOR, 4"-12" COLLAR, FLOOR STAND
- WEIGHT:** 355 LBS. (as shown)
- NOISE:** 76.0 dBA



DISTRIBUTED BY:

COPYRIGHT: This document and the information contained may not be reproduced or distributed without express written consent of INDUSTRIAL MAID. Unauthorized reproduction, disclosure, or manufacturing use are prohibited by copyright law.



INDUSTRIAL MAID

MFG. BY:

INDUSTRIAL MAID LLC
 351 S. 12TH RD.
 CORTLAND, NE 68331
 Ph. (402) 798-7116
 Fax (402) 798-7117
 www.industrial-maid.com