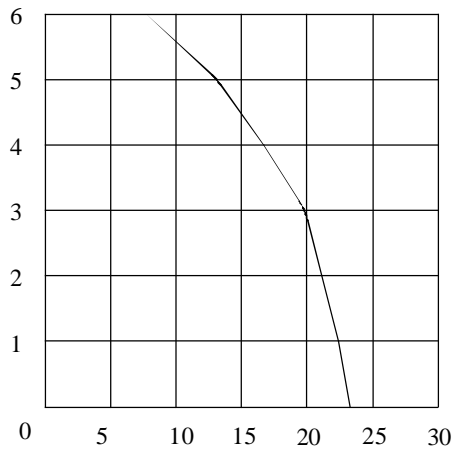
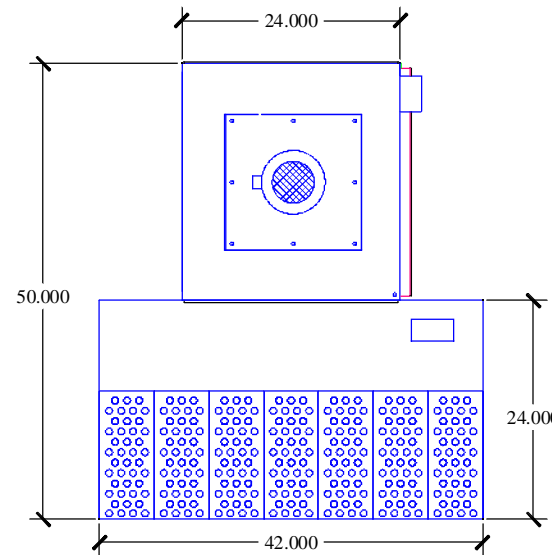
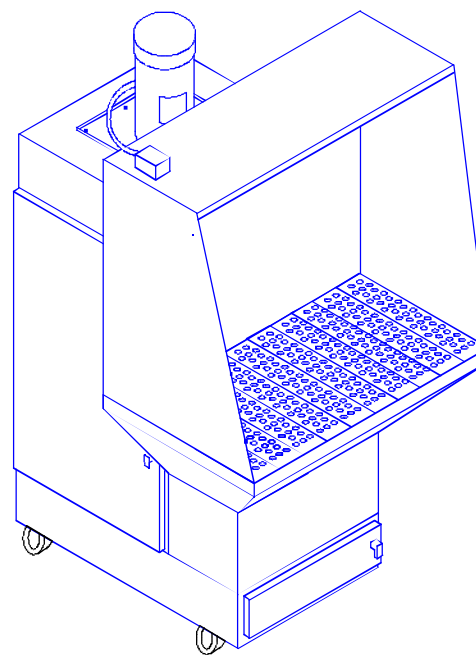
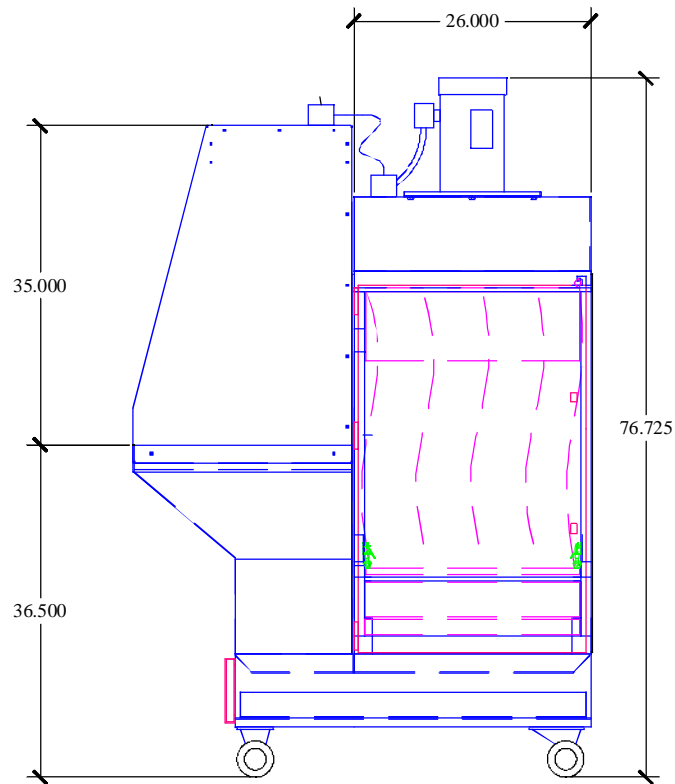


PRESSURE IN. W.G.



CFM X's 100



SHEET TITLE: **M36 PAC DT2448-1.5D-E**

DRWG. NO.: M36 PAC-2448E-1.5-1214 DRAWN BY: **TAA**

DATE: **12/15/14** SCALE: **NTS**

SPECIFICATIONS:

DIMENSIONS: 77"H X 42"W X 50"D

MOTOR: 1.5 HP 115/230/1/60 TEFC, 14.2-7.1 FLA

CFM: 2000 @ 3.0" W.G.

CONSTRUCTION: 12 & 14 GA POWDER COATED STEEL FRAME. ADJ. COMPRESSION HINGES
 3/16 POLYETHYLENE PANELS
 CAM FILTER AND DOOR LATCHES
 16 GA ACCESS DOOR
 4-WAY ALUMINUM EXHAUST GRILLE
 12 GRATE PANELS
 42"W X 24"D DOWNDRAFT TABLE, 36.5"H

ELECTRICAL: 115V - INCL. SWITCH AND 15 FT CORD

BLOWER: COMPOSITE BI WHEEL

FILTERS: 4" PLEATED PREFILTER
 95% BAG FILTER

OPTIONS: 65% BAG FILTER. (OPT.)
 2" POLY PAD (OPT.)
 2" BAFFLE PREFILTER (OPT.)
 HEPA AFTERFILTER (OPT.)
 CARBON MODULE, 26 LB (OPT.)
 35" HIGH ENCLOSURE
 SIDE AND BACK SHIELDS
 MAGNETIC PRESSURE GAUGE
 BACK AND SIDE SHIELDS
 DUST PROOF LIGHT KIT

WEIGHT: T.B.D.

NOISE: 69.5 dBA



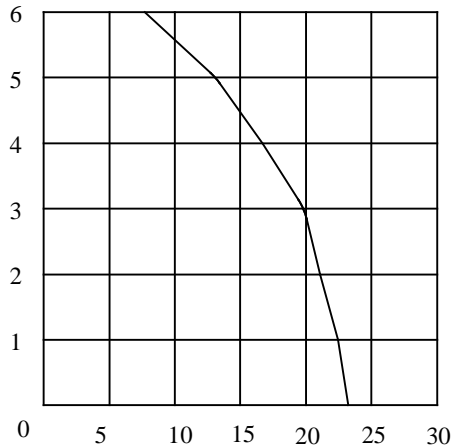
INDUSTRIAL MAID

MFG. BY:

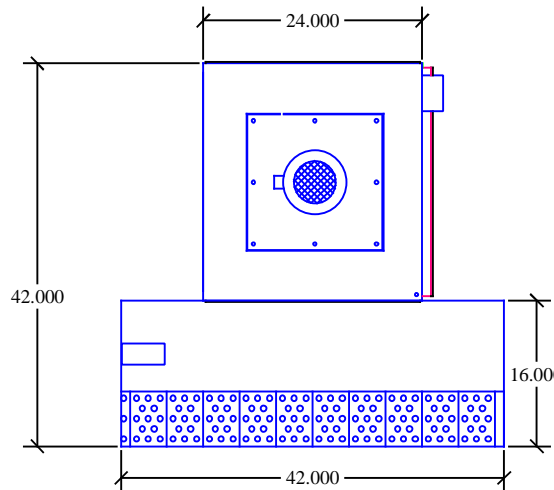
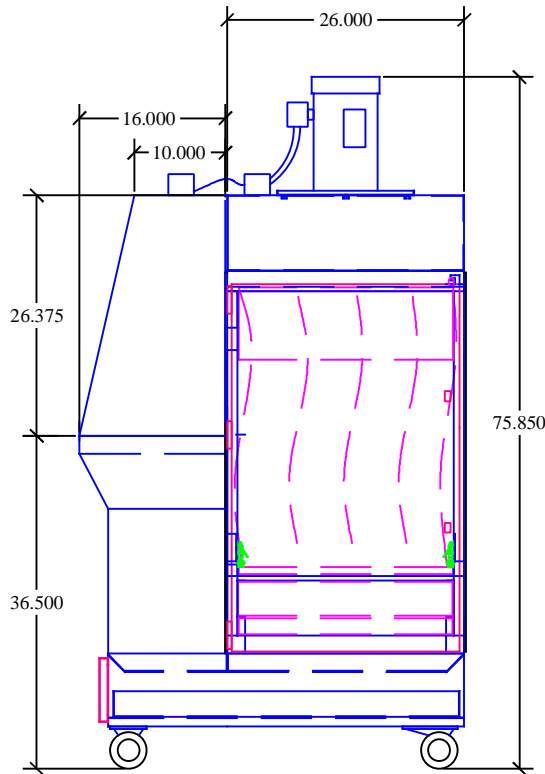
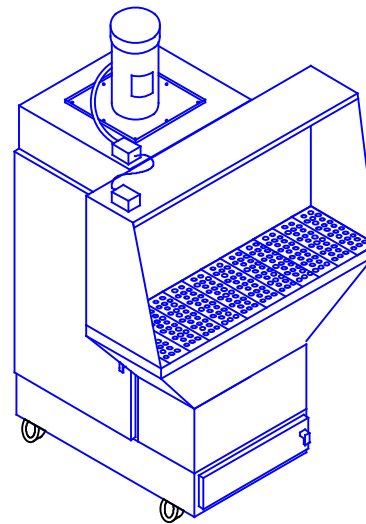
INDUSTRIAL MAID LLC
 351 S. 12TH RD.
 CORTLAND, NE 68331
 Ph. (402) 798-7116
 Fax (402) 798-7117
www.industrial-maid.com

COPYRIGHT: This document and the information contained may not be reproduced or distributed without express written consent of INDUSTRIAL MAID. Unauthorized reproduction, disclosure, or manufacturing use are prohibited by copyright law.

PRESSURE IN. W.G.



CFM X's 100



SHEET TITLE : M36 PAC DT42-1.5D-ENC

DRWG. NO: M36 PAC-48E-1.5-1217 DRAWN BY: TAA

DATE: 12/21/17 SCALE: NTS

SPECIFICATIONS:

DIMENSIONS: 76"H X 42"W X 42"D

MOTOR: 1.5 HP 115/230/1/60 TEFC, 14.2-7.1 FLA

CFM: 2000 @ 3.0" W.G.

CONSTRUCTION: 12 & 14 GA POWDER COATED STEEL FRAME. ADJ. COMPRESSION HINGES
 3/16 POLYETHYLENE PANELS
 CAM FILTER AND DOOR LATCHES
 16 GA ACCESS DOOR
 4-WAY ALUMINUM EXHAUST GRILLE
 12 GRATE PANELS
 48"W X 16"D DOWNDRAFT TABLE , 36.5"H

ELECTRICAL: 115V - INCL. SWITCH AND 15 FT CORD

BLOWER: COMPOSITE BI WHEEL

FILTERS: 4" PLEATED PREFILTER
 95% BAG FILTER

OPTIONS: 65% BAG FILTER. (OPT.)
 2" POLY PAD (OPT.)
 2" BAFFLE PREFILTER (OPT.)
 HEPA AFTERFILTER (OPT.)
 CARBON MODULE, 26 LB (OPT.)
 6" OR 8" EXTRACTION ARMS
 SILENCER
 MAGNAHELIC PRESSURE GAUGE
 BACK AND SIDE SHIELDS
 DUST PROOF LIGHT KIT

WEIGHT: T.B.D.

NOISE: 69.5 dBA



MFG. BY:

INDUSTRIAL MAID LLC
 351 S. 12TH RD.
 CORTLAND, NE 68331
 Ph. (402) 798-7116
 Fax (402) 798-7117
 www.industrial-maid.com

COPYRIGHT: This document and the information contained may not be reproduced or distributed without express written consent of INDUSTRIAL MAID. Unauthorized reproduction, disclosure, or manufacturing use are prohibited by copyright law.