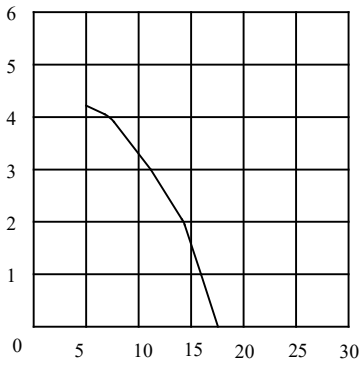
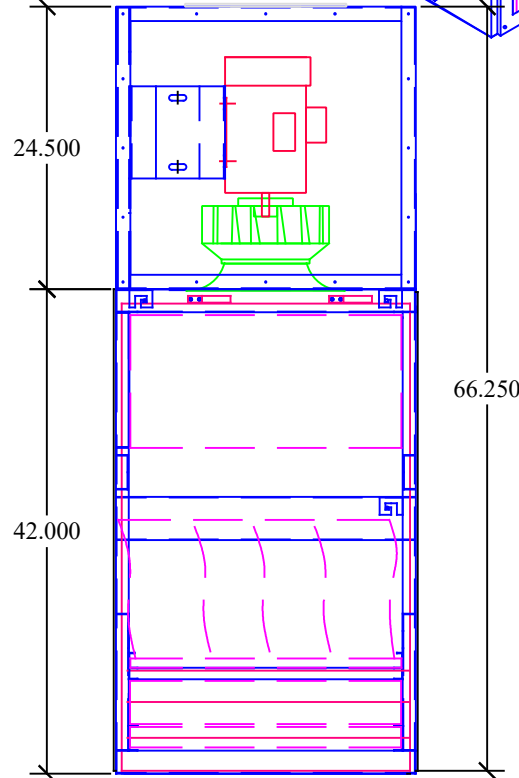
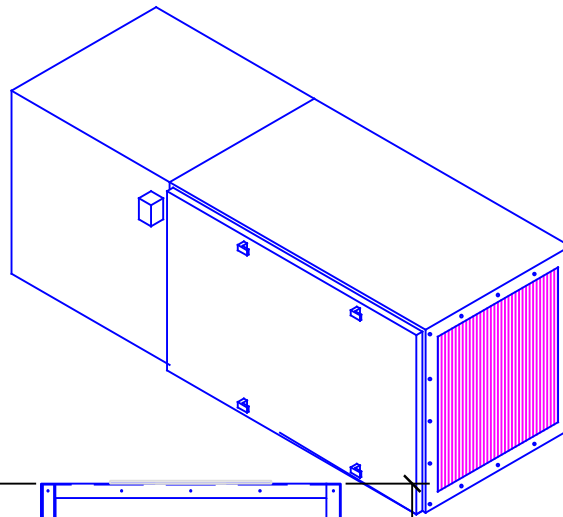
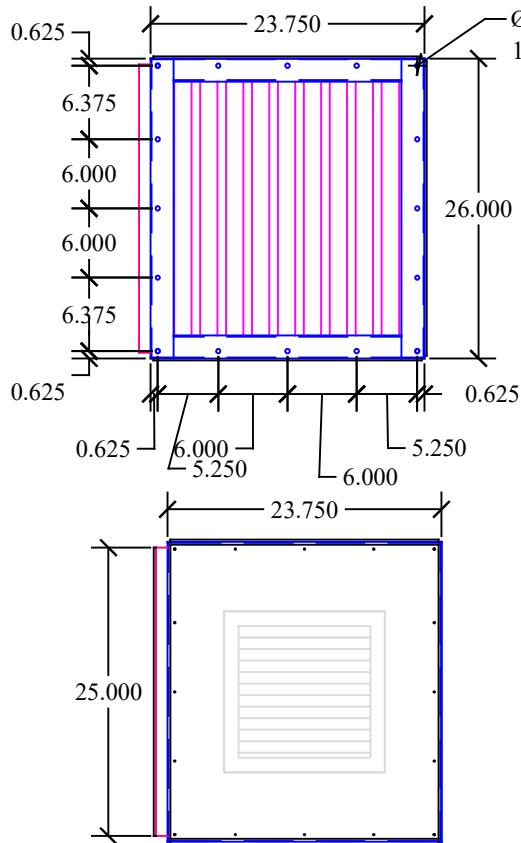


PRESSURE IN. W.G.



CFM X's 100



SHEET TITLE : AZTech M36 IAC-1.0DD

DRWG. NO. 36134D-081311 DRAWN BY: TAA

DATE: 08/13/11 SCALE: NTS

SPECIFICATIONS:

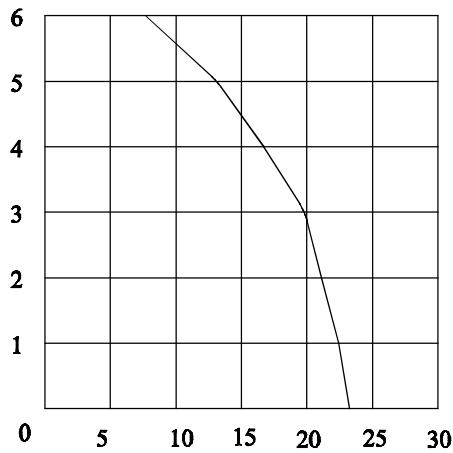
- DIMENSIONS:** 26"H X 68" W X 25" D
- MOTOR:** 1.0 HP 115/208-230/1/60 TEFC, 12.4/6.7-6.2 FLA
1.0 HP 208-230/460/3/60 TEFC, 3.7-3.7/1.85 FLA
- CFM:** 1000 CFM @ 3.0 " W.G.
- ELECTRICAL** WIRED TO JCT. BOX
- BLOWER:** COMPOSITE BI WHEEL
- CONSTRUCTION** 12 & 14 GA POWDER COATED STEEL FRAME, 16 GA STEEL DOORS, 16 GA. STEEL PANELS, ADJ. COMPRESSION HINGES, CAM DOOR AND FILTER LATCHES, 4-WAY ALUMINUM EXHAUST GRILLE
- STD. FILTERS:** (1) 4" PLEATED PREFILTER
(1) 95% BAG FILTER
- OPTIONAL FILTERS:** 65% BAG FILTER, 26 LB CARBON MODULES, 2" MESH PREFILTERS, 2" BAFFLED PREFILTERS, 4" MIST ELIMINATORS, 99.97% HEPA AFTERFILTERS
- OPTIONS:** EYEBOLTS (INSTALLED), SILENCER, MAGNAHELIC PRESSURE GAUGE, MANOMETER, SOURCE CAPTURE PLENUM, INLET/ OUTLET COLLARS
- WEIGHT:** 285 LBS.
- NOISE:** 69.5 dBA



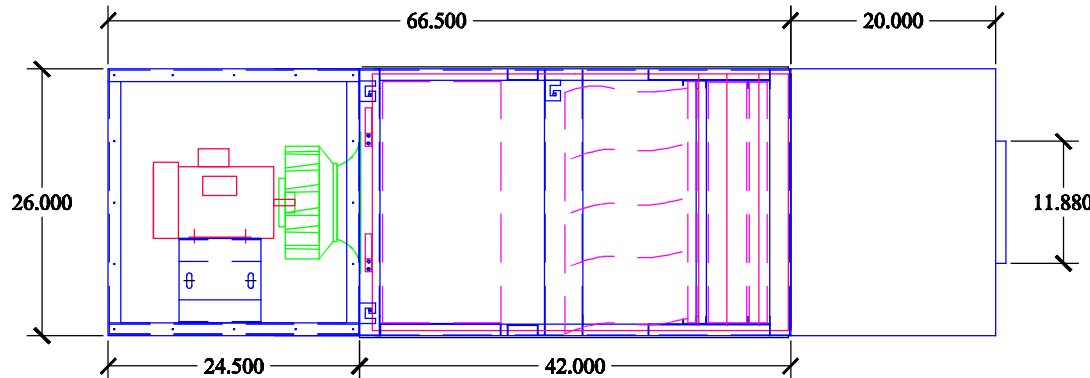
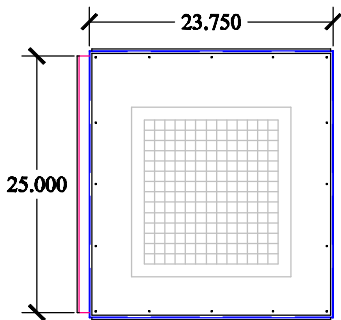
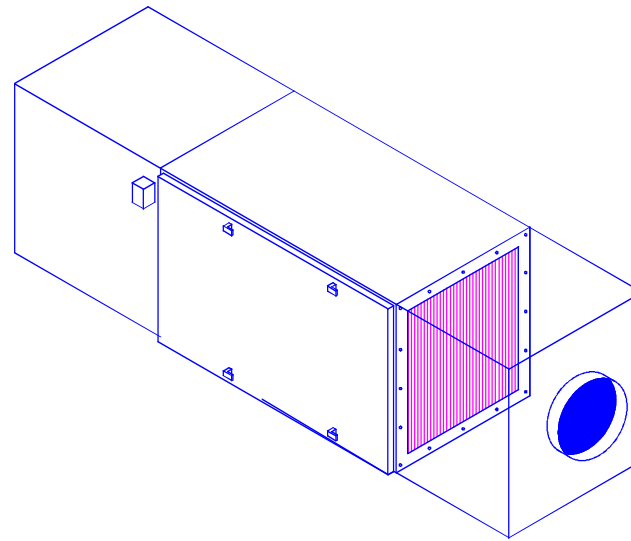
INDUSTRIAL MAID
 INDUSTRIAL MAID LLC
 351 S. 12TH RD.
 CORTLAND, NE 68331
 Ph. (402) 798-7116
 Fax (402) 798-7117
 www.industrial-maid.com

COPYRIGHT: This document and the information contained may not be reproduced or distributed without express written consent of INDUSTRIAL MAID. Unauthorized reproduction, disclosure, or manufacturing use are prohibited by copyright law.

PRESSURE IN. W.G.



CFM X's 100



SHEET TITLE: AZTech M36 IAC -2HPDD

DRWG. NO: M362HPDD-011510 DRAWN BY: TAA

DATE: 01/15/10 SCALE: NTS

SPECIFICATIONS:

DIMENSIONS: 26"H X 66.5" W X 25" D

MOTOR: 2 HP 230/460/3/60 TEFC
5.8/2.9 FLA
2 HP 115/208-230/1/60 TEFC
16.6/9.1-8.3 FLA

ELECTRICAL: WIRED TO JCT. BOX

CFM: 2000 CFM @ 3" W.G.

BLOWER: DIRECT DRIVE BI WHEEL

CONSTRUCTION: 12 & 14 GA POWDER COATED STEEL FRAME. 16 GA STEEL DOORS. 3/16 POLYETHYLENE PANELS. ADJ. COMPRESSION HINGES CAM DOOR AND FILTER LATCHES 4-WAY ALUMINUM EXHAUST GRILLE

STD. FILTERS: (1) 4" PLEATED FILTER
(1) 95 % BAG FILTER , 108 SF

OPTIONAL FILTERS: 65% BAG FILTER
2" BAFFLE FILTER
2" MESH PREFILTERS
99.97% HEPA
26 LB. CARBON BANK

OPTIONS: EYEBOLTS (INSTALLED)
SILENCER
MAGNETIC PRESSURE GAUGE
MANOMETER
SOURCE CAPTURE PLENUM
6" & 8" EXTRACTION ARMS
ALL STEEL CONSTRUCTION

WEIGHT: 315 LBS. (LESS OPTIONS)

NOISE: 76.0 dBA

MFG. BY:



INDUSTRIAL MAID

INDUSTRIAL MAID LLC

351 S. 12TH RD.

CORTLAND, NE 68331

Ph. (402) 798-7116

Fax (402) 798-7117

www.industrial-maid.com

COPYRIGHT: This document and the information contained may not be reproduced or distributed without express written consent of INDUSTRIAL MAID. Unauthorized reproduction, disclosure, or manufacturing use are prohibited by copyright law.