

MAGNA

950, 1000 & 1100 Series

- High Efficiency Glass Microfiber
- Heavy-Duty 3/4" Particleboard or Galvanized Metal Frames
- Two Part Polyurethane Sealant
- Standard Neoprene Gasketing
- High Capacity Filters Available

FEATURES

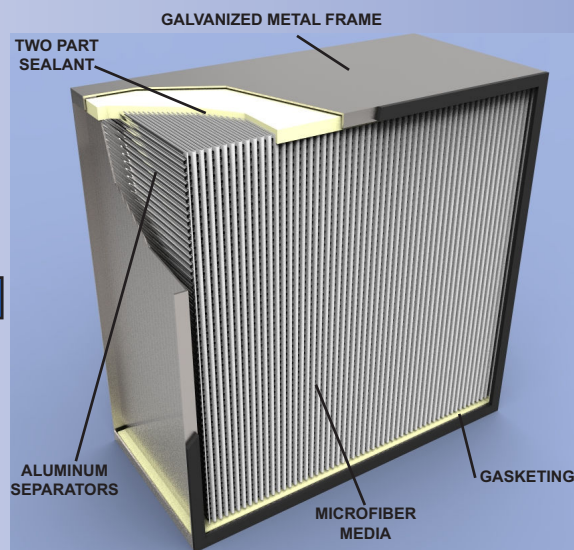


The Glasfloss Magna Series HEPA grade air filters are designed for high-efficiency commercial and industrial applications. Magna Series efficiency ranges include: 950 Series - 95%, 1000 Series - 99.97% and 1100 Series - 99.99%, all based on a .30 micron particle. Glasfloss Magna filters are produced in a wide range of sizes, frame types and header combinations and are ideal for converting or upgrading existing systems. As an option, Glasfloss High-Capacity Magna filter models are also available for higher velocity applications and incorporate more media area for lower resistance.

The frame shall be made of a rigid high-density 3/4" particleboard or 18-gauge galvanized metal, (26-gauge galvanized metal frame is used for the Magna 950 Series - 95%). A 26-gauge galvanized steel header is available on the metal frame on 950 Series. The media shall be constructed of a water-resistant, inorganic glass microfiber. For quality assurance, the glass microfiber media rolls are randomly tested and certified to meet minimum efficiency requirements by the media manufacturer. The media pack shall consist of a continuous sheet of the pleated glass microfiber. The pleated media pack is separated with multiple rolled-edge corrugated aluminum separators. The media cartridge shall be sealed with a fire retarding, rubber base, two-part sealant that bonds the media and separators to the interior of the frame. A 1/4" thick closed cell neoprene gasket shall be applied on the filter. The filter shall be rated to withstand temperatures at a continuous 180° Fahrenheit. The 95%, 99.97% and 99.99% Magna filters shall be Classified under U. L. Std. 900.



SPECIFICATIONS



950 Series - 95%

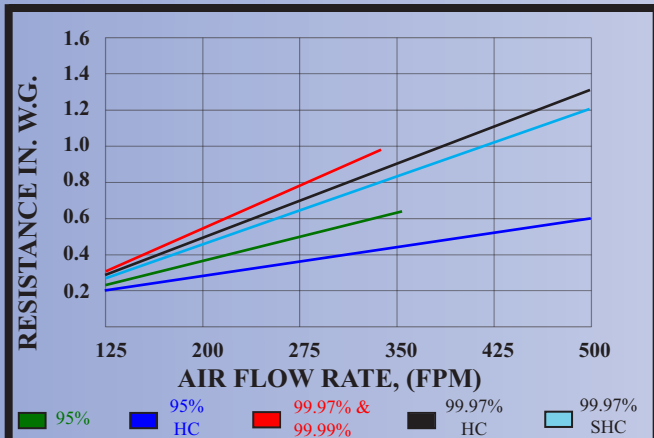
BASE MODEL NUMBER	SIZE H x W x D NOMINAL	SIZE H x W x D EXACT	RATED VELOCITY FPM			Box Style												
			Std	HC	SHC	INITIAL RESIST. IN. W.G.			MEDIA SQUARE FEET			INITIAL RESIST. IN. W.G.			MEDIA SQUARE FEET			
						Std	HC	SHC	Std	HC	SHC	Std	HC	SHC	Std	HC	SHC	
0808A4	8 x 8 x 6	8 x 8 x 5-7/8	175	-	-	.50	-	-	13.06	-	-	-	-	-	-	-	-	-
1212A4	12 x 12 x 6	12 x 12 x 5-7/8	175	-	-	.50	-	-	29.75	-	-	-	-	-	-	-	-	-
1224A4	12 x 24 x 6	12 x 24 x 5-7/8	175	-	-	.50	-	-	58.75	-	-	-	-	-	-	-	-	-
1824A4	18 x 24 x 6	18 x 24 x 5-7/8	175	-	-	.50	-	-	88.13	-	-	-	-	-	-	-	-	-
2424A4	24 x 24 x 6	24 x 24 x 5-7/8	175	-	-	.50	-	-	117.50	-	-	-	-	-	-	-	-	-
2430A4	24 x 30 x 6	24 x 30 x 5-7/8	175	-	-	.50	-	-	146.88	-	-	-	-	-	-	-	-	-
2436A4	24 x 36 x 6	24 x 36 x 5-7/8	175	-	-	.50	-	-	176.00	-	-	-	-	-	-	-	-	-
2448A4	24 x 48 x 6	24 x 48 x 5-7/8	175	-	-	.50	-	-	235.00	-	-	-	-	-	-	-	-	-
1212B4	12 x 12 x 12	12 x 12 x 11-1/2	275	500	-	.50	.60	-	57.50	69.00	-	-	-	-	-	-	-	-
11F23FB4	12 x 24 x 12	11-3/8 x 23-3/8 x 11-1/2	275	500	-	.50	.60	-	106.17	127.40	-	-	-	-	-	-	-	-
1224B4	12 x 24 x 12	12 x 24 x 11-1/2	275	500	-	.50	.60	-	115.00	138.00	-	-	-	-	-	-	-	-
1824B4	18 x 24 x 12	18 x 24 x 11-1/2	275	500	-	.50	.60	-	172.50	207.00	-	-	-	-	-	-	-	-
23F23FB4	24 x 24 x 12	23-3/8 x 23-3/8 x 11-1/2	275	500	-	.50	.60	-	218.18	261.82	-	-	-	-	-	-	-	-
2424B4	24 x 24 x 12	24 x 24 x 11-1/2	275	500	-	.50	.60	-	230.00	276.00	-	-	-	-	-	-	-	-
2430B4	24 x 30 x 12	24 x 30 x 11-1/2	275	500	-	.50	.60	-	287.50	345.00	-	-	-	-	-	-	-	-

1000 Series - 99.97%, 1100 Series - 99.99%

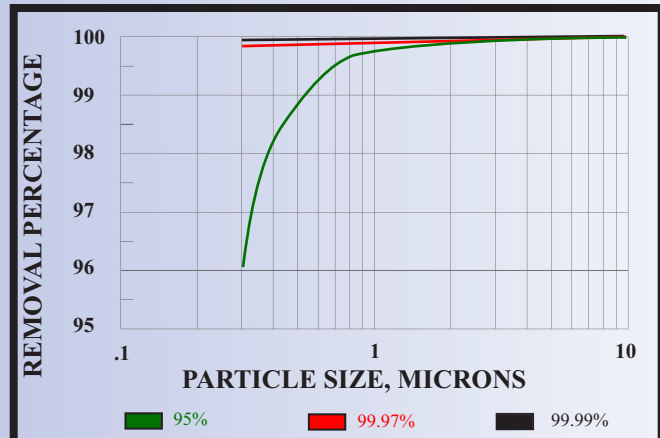
BASE MODEL NUMBER	SIZE H x W x D NOMINAL	SIZE H x W x D EXACT	RATED VELOCITY FPM			Box Style									Flush Box Style			
			Std	HC	SHC	INITIAL RESIST. IN. W.G.			MEDIA SQUARE FEET			INITIAL RESIST. IN. W.G.			MEDIA SQUARE FEET			
						Std	HC	SHC	Std	HC	SHC	Std	HC	SHC	Std	HC	SHC	
0808A5	8 x 8 x 6	8 x 8 x 5-7/8	175	-	-	0.79	-	-	7.87	-	-	0.75	-	-	9.72	-	-	-
1212A5	12 x 12 x 6	12 x 12 x 5-7/8	175	-	-	0.79	-	-	20.93	-	-	0.75	-	-	23.92	-	-	-
1224A5	12 x 24 x 6	12 x 24 x 5-7/8	175	-	-	0.79	-	-	44.84	-	-	0.75	-	-	47.83	-	-	-
1818A5	18 x 18 x 6	18 x 18 x 5-7/8	175	-	-	0.79	-	-	51.68	-	-	0.75	-	-	56.38	-	-	-
1824A5	18 x 24 x 6	18 x 24 x 5-7/8	175	-	-	0.79	-	-	70.47	-	-	0.75	-	-	75.17	-	-	-
2424A5	24 x 24 x 6	24 x 24 x 5-7/8	175	-	-	0.79	-	-	96.09	-	-	0.75	-	-	102.50	-	-	-
2430A5	24 x 30 x 6	24 x 30 x 5-7/8	175	-	-	0.79	-	-	123.32	-	-	0.75	-	-	129.73	-	-	-
2436A5	24 x 36 x 6	24 x 36 x 5-7/8	175	-	-	0.79	-	-	148.95	-	-	0.75	-	-	155.35	-	-	-
2448A5	24 x 48 x 6	24 x 48 x 5-7/8	175	-	-	0.79	-	-	200.20	-	-	0.75	-	-	206.60	-	-	-
2460A5	24 x 60 x 6	24 x 60 x 5-7/8	175	-	-	0.79	-	-	253.05	-	-	0.75	-	-	259.45	-	-	-
*2472A5	*24 x 72 x 6	*24 x 72 x 5-7/8	175	-	-	0.79	-	-	304.30	-	-	0.75	-	-	310.70	-	-	-
*3024A5	*30 x 24 x 6	30 x 24 x 5-7/8	175	-	-	0.79	-	-	121.72	-	-	0.75	-	-	129.83	-	-	-
*3030A5	*30 x 30 x 6	30 x 30 x 5-7/8	175	-	-	0.79	-	-	156.21	-	-	0.75	-	-	164.32	-	-	-
*3036A5	*30 x 36 x 6	30 x 36 x 5-7/8	175	-	-	0.79	-	-	188.66	-	-	0.75	-	-	196.78	-	-	-
*3048A5	*30 x 48 x 6	30 x 48 x 5-7/8	175	-	-	0.79	-	-	253.58	-	-	0.75	-	-	261.70	-	-	-
*3060A5	*30 x 60 x 6	30 x 60 x 5-7/8	175	-	-	0.79	-	-	320.53	-	-	0.75	-	-	328.64	-	-	-
*3072A5	*30 x 72 x 6	30 x 72 x 5-7/8	175	-	-	0.79	-	-	385.44	-	-	0.75	-	-	393.56	-	-	-
*3624A5	*36 x 24 x 6	36 x 24 x 5-7/8	175	-	-	0.79	-	-	147.34	-	-	0.75	-	-	157.17	-	-	-
*3630A5	*36 x 30 x 6	36 x 30 x 5-7/8	175	-	-	0.79	-	-	189.09	-	-	0.75	-	-	198.91	-	-	-
*3636A5	*36 x 36 x 6	36 x 36 x 5-7/8	175	-	-	0.79	-	-	228.38	-	-	0.75	-	-	238.21	-	-	-
*3648A5	*36 x 48 x 6	36 x 48 x 5-7/8	175	-	-	0.79	-	-	306.97	-	-	0.75	-	-	316.79	-	-	-
*3660A5	*36 x 60 x 6	36 x 60 x 5-7/8	175	-	-	0.79	-	-	388.01	-	-	0.75	-	-	397.83	-	-	-
*3672A5	*36 x 72 x 6	36 x 72 x 5-7/8	175	-	-	0.79	-	-	466.59	-	-	0.75	-	-	476.41	-	-	-
1212B5	12 x 12 x 12	12 x 12 x 11-1/2	275	500	500	0.79	1.3	1.2	49.00	57.75	64.75	0.75	1.25	1.15	56.00	66.50	73.50	
23F11FB5	24 x 12 x 12	23-3/8 x 11-3/8 x 11-1/2	275	500	500	0.79	1.3	1.2	97.87	116.12	129.39	0.75	1.25	1.15	104.51	122.76	137.68	
2412B5	24 x 12 x 12	24 x 12 x 11-1/2	275	500	500	0.79	1.3	1.2	105.00	126.00	141.75	0.75	1.25	1.15	112.00	133.00	148.75	
2418B5	24 x 18 x 12	24 x 18 x 11-1/2	275	500	500	0.79	1.3	1.2	157.50	189.00	212.63	0.75	1.25	1.15	168.00	199.50	223.13	
23F23FB5	24 x 24 x 12	23-3/8 x 23-3/8 x 11-1/2	275	500	500	0.79	1.3	1.2	201.12	238.62	265.89	0.75	1.25	1.15	214.76	252.26	282.93	
2424B5	24 x 24 x 12	24 x 24 x 11-1/2	275	500	500	0.79	1.3	1.2	210.00	252.00	283.50	0.75	1.25	1.15	224.00	266.00	297.50	
2430B5	24 x 30 x 12	24 x 30 x 11-1/2	275	500	500	0.79	1.3	1.2	269.50	318.50	357.00	0.75	1.25	1.15	283.50	336.00	371.00	

*Available in particle board only. Tolerances shall be +/- 1/16" for height and width. The frame depth shall not exceed 5-7/8" and 11-1/2". For 1100 Series - 99.99% replace 5 with 6 in the base part number. Hi Capacity contains approx. 20% more media, Super High Capacity contains approx. 35% more media.

STANDARD PRESSURE DROP
Test Filter Size 24" x 24" Nominal



MINIMUM PARTICLE SIZE EFFICIENCY
Test Filter Size 24" x 24" Nominal



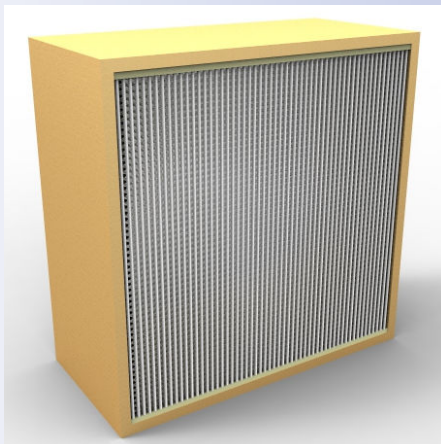
"Serving You With Locations Throughout The Nation"

Glasfloss has a policy of uninterrupted research, development and product improvement and reserves the right to change design and specifications without notice.

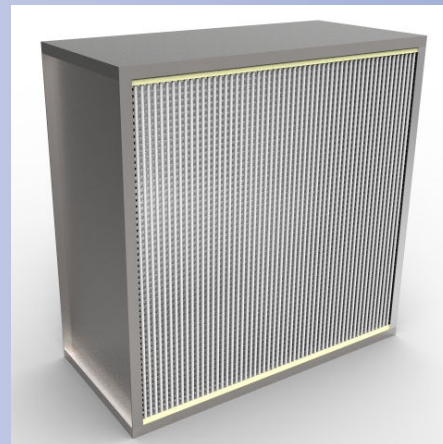
PART NUMBER CONFIGURATION

PREFIX	FRAME MATERIAL	FRAME STYLE	BASE MODEL NUMBER	GASKET LOCATION	FACE GUARDS	CAPACITY	
MAG	P = PARTICLE BOARD G = GALVANIZED METAL	B = BOX STYLE H = SINGLE HEADER D = DOUBLE HEADER FX = FLUSH BOX	SELECT BASE MODEL NO. FROM CHART FOR DESIRED SIZE AND EFFICIENCY OR INSERT EXACT SIZE AND EFFICIENCY FOR SPECIAL SIZE MAGNA FILTERS	O = NO GASKET BOX STYLE A = AIR EXIT B = AIR ENTRY C = AIR EXIT/ENTRY D = SIDE LOAD SINGLE HEADER E = AIR ENTRY/EXIT F = AIR ENTRY H = AIR EXIT J = SIDE LOAD S = ONE VERTICAL SIDE	DOUBLE HEADER K = AIR ENTRY / EXIT M = AIR ENTRY P = AIR EXIT Q = SIDE LOAD	X = NONE 1 = BACK SIDE 2 = FRONT SIDE 3 = BOTH SIDES	BLANK = REGULAR CAPACITY L = LOW CAPACITY H = HIGH CAPACITY S = SUPER HIGH CAPACITY.

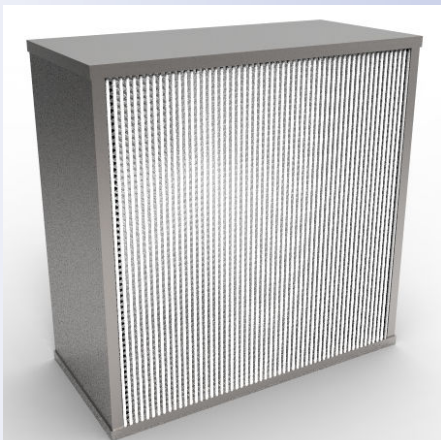
PARTICLE BOARD BOX 950, 1000 and 1100 Series



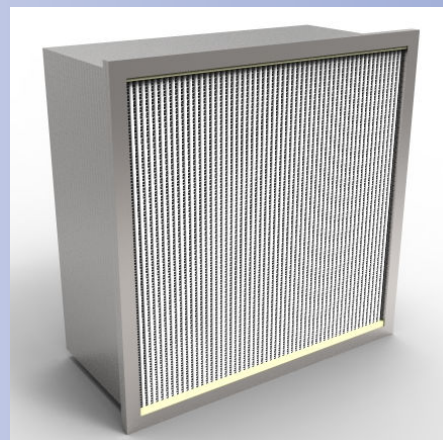
METAL BOX 1000 and 1100 Series



METAL FLUSH BOX - 1000, 1100 Series METAL BOX - 950 Series



METAL SINGLE HEADER 950 Series



Features:

- Quality Assurance - the Magna 950 Series - 95%, 1000 Series - 99.97% and 1100 Series - 99.99% filters incorporate glass microfiber media rolls that are randomly tested and certified to meet minimum-efficiency requirements by the media manufacturer. In addition, Glasfloss randomly selects and tests filters for leaks under a rigorous quality control program.
- Media produced from glass microfibers are moisture-resistant and will not support microbial growth.
- Magna 99.99% filters are tested for leaks based on near-monodispersed .30 micron size particle.
- Frame is available in either 3/4" particleboard or 18 gauge galvanized metal for the 1000 Series - 99.97% and 1100 Series - 99.99%. A 26-gauge galvanized metal frame is used for the Magna 950 Series - 95%.
- Aluminum separators incorporate rolled edges that help prevent media chaffing and damage in handling.
- The filter cartridge is bonded within the frame using a two-part sealant that isolates the filter from external shock and prevents air bypass.
- Neoprene closed cell gasket is standard on each filter.
- Magna 950 Series - 95%, 1000 Series - 99.97% and 1100 Series - 99.99% are available in standard and special size face dimensions.

Optional Features:

- Upon request, the Magna 950 Series - 95%, 1000 Series - 99.97% shall be individually tested for leaks based on near-monodispersed .30 micron size particle.
- An expanded metal wire lath face guard can be placed on air-entry and/or the air-exit side of the filter.
- High-capacity and turbine style filters are available.



SPECIFICATIONS FOR MAGNA SERIES

The filter element shall be factory-constructed by pleating a continuous sheet of glass microfiber media into uniform spaced pleats which are separated by rolled-edge corrugated aluminum. The efficiency shall be 95%, 99.97% or 99.99% based on a near-monodispersed .30 micron size particle. This filter pack shall be encased in a rigid frame of 3/4" particleboard or 18-gauge galvanized steel for the 1000 Series - 99.97% and 1100 Series - 99.99% efficiencies (26-gauge galvanized metal frame is used for the 950 Series - 95%). The frame shall not exceed 5-7/8" or 11-1/2" in depth, and standard tolerances shall be +/- 1/16" on height and width. A closed-cell neoprene gasket shall be applied to the filter. Each filter shall be packaged into a heavy-duty carton. Filters shall be Classified under U. L. Std. 900.



Glasfloss is proud to be an Energy Star Partner. The Energy Star Service and Product Provider Partnership is available to organizations that provide energy efficiency related products and/or services to the commercial buildings and industrial plants in the United States.



Glasfloss manufactures a variety of medium and high efficiency air filters which can be specified for LEED certification applications. For specific information on these products, please contact your local Glasfloss Sales Representative.



Distributed by:



"Serving You With Locations Throughout The Nation"