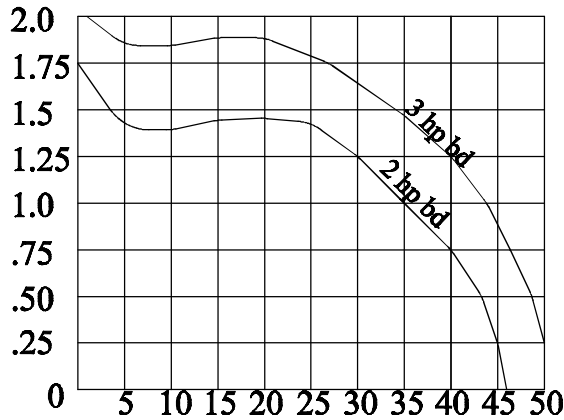
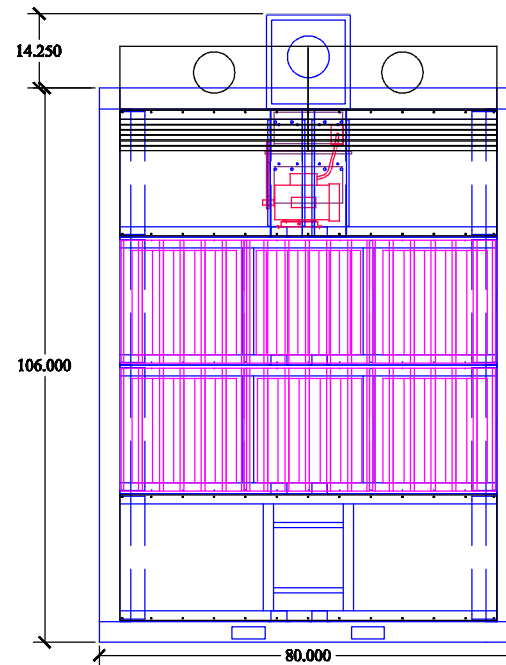
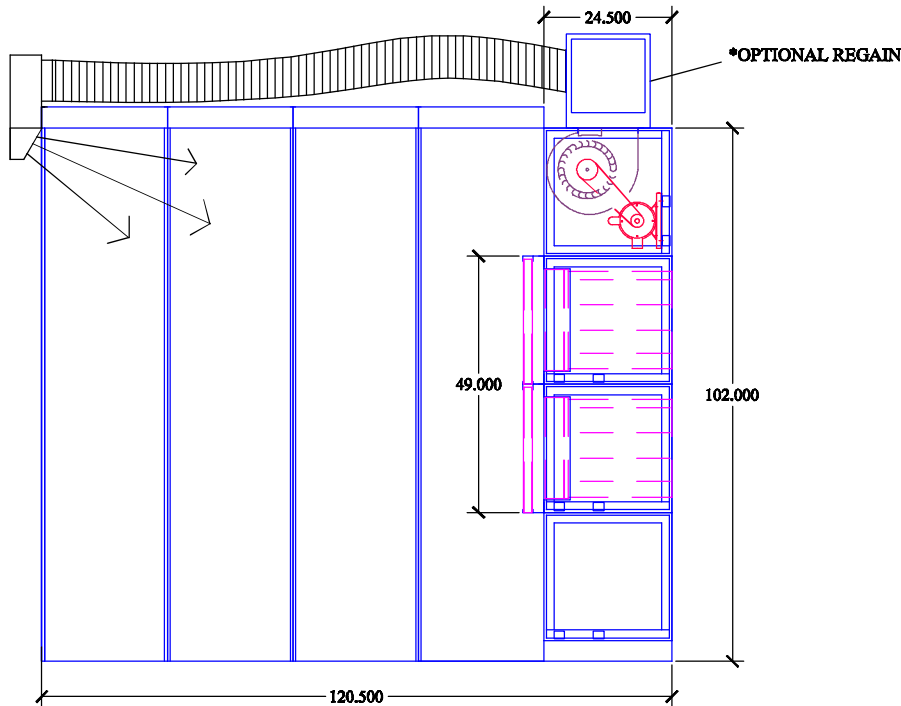
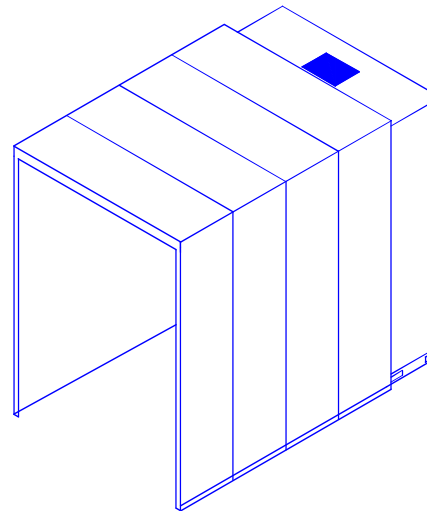


STATIC PRESSURE, W.G.



CFM X's 100



SHEET TITLE: **AZTech EB45-1**
 DRWG. NO.: **EB4-081308** DRAWN BY: **TAA**
 DATE: **08/13/08** SCALE: **NTS**

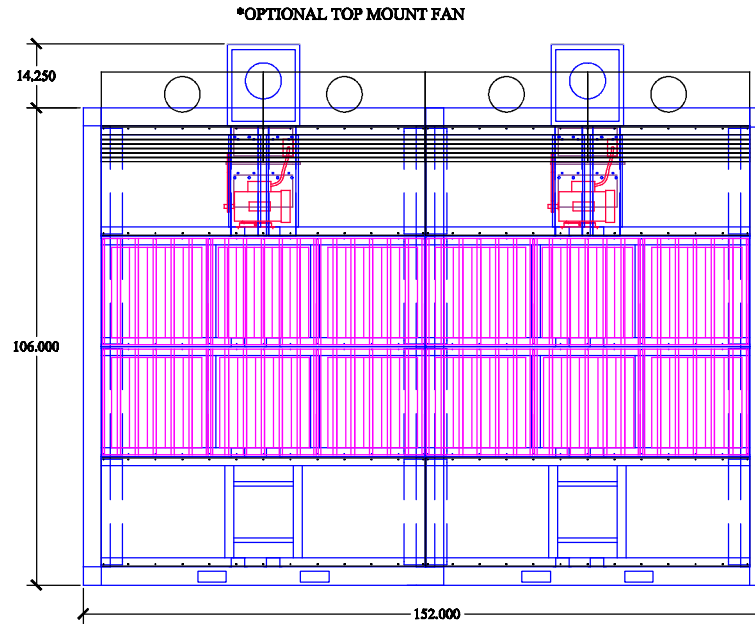
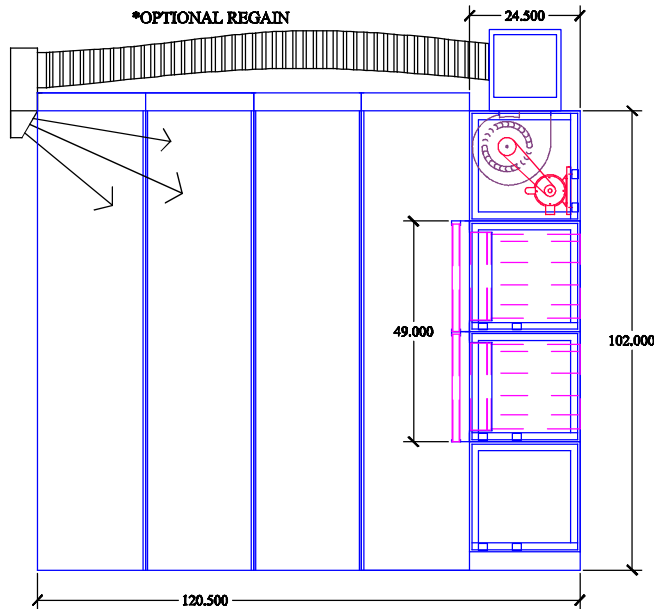
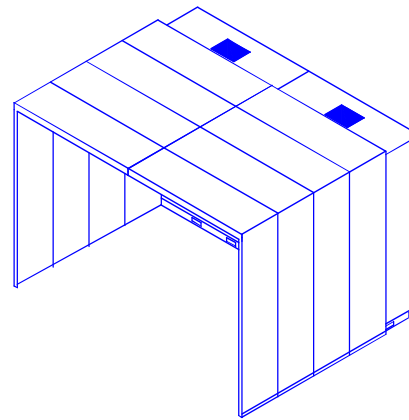
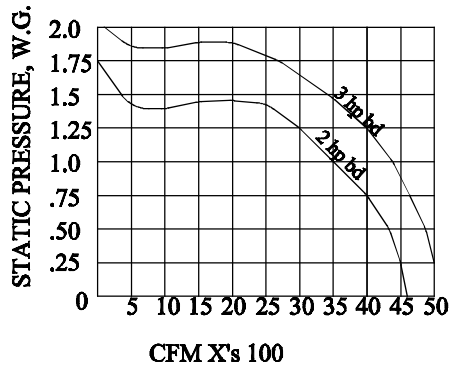
SPECIFICATIONS:

- DIMENSIONS:** EB45-1 106"H X 80" W X 120.5" D
- MOTOR:** 3 HP 230/460/3/60, 8.6/4.3 FLA
TEFC MOTOR STD.
- CFM:** 4500 CFM @ .8" W.G.
- CONSTRUCTION:** 7,10,&14 GA POWDER COATED STEEL FRAME.
3/16 POLYETHYLENE PANELS. FULL CARBON STEEL CONSTRUCTION AVAILABLE. 1 DUSTPROOF LIGHT
4-WAY ALUMINUM EXHAUST GRILLE
22 GA, WALL PANEL 2" ACCOUSTIC BATT INSULATION
- ELECTRICAL:** WIRED TO JCT. BOX
OPT. MOTOR STARTER
- BLOWER:** 10 X 10 FORWARD CURVED BLOWER
BELT DRIVE, VARIABLE SHEAVE
- FILTERS:** 2" ALUMINUM BAFFLE PREFILTER
4" PLEATED PREFILTER
95% FIBERGLASS BAG FILTER
- OPTIONS:** HEPA AFTER FILTER
SILENCER
MAGNAHELIC PRESSURE GAUGE
REGAIN
2" ALUMINUM MESH
- WEIGHT:** EB45-1 1750 LBS.
- NOISE:** 72.0 dBA

COPYRIGHT: This document and the information contained may not be reproduced or distributed without express written consent of INDUSTRIAL MAID. Unauthorized reproduction, disclosure, or manufacturing use are prohibited by copyright law.



INDUSTRIAL MAID
 INDUSTRIAL MAID LLC
 351 S. 12TH RD.
 CORTLAND, NE 68331
 Ph. (402) 798-7116
 Fax (402) 798-7117
www.industrial-maid.com



SHEET TITLE : **AZTech EB45-2**

DRWG. NO.: **EB4X2-081308** DRAWN BY: **TAA**

DATE: **08/13/08** SCALE: **NTS**

SPECIFICATIONS:

DIMENSIONS: EB45-2 106"H X 152" W X 120.5" D

MOTOR: (2) 3 HP 230/460/3/60, 8.6/4.3 FLA TEFC MOTOR STD.

CFM: (2) 4500 CFM @ .8" W.G.

CONSTRUCTION 7,10,&14 GA POWDER COATED STEEL FRAME.
3/16 POLYETHYLENE PANELS, FULL CARBON STEEL CONSTRUCTION AVAILABLE. 1 DUSTPROOF LIGHT
4-WAY ALUMINUM EXHAUST GRILLE
22 GA. WALL PANEL 2" ACCOUSTIC BATT INSULATION

ELECTRICAL (2) WIRED TO JCT. BOX
OPT. MOTOR STARTER

BLOWER: (2) 10 X 10 FORWARD CURVED BLOWER
BELT DRIVE, VARIABLE SHEAVE

FILTERS: 2" BAFFLE PREFILTER
4" PLEATED PREFILTER
95% FIBERGLASS BAG FILTER

OPTIONS: HEPA AFTER FILTER
SILENCER
MAGNETIC PRESSURE GAUGE
REGAIN
2" ALUMINUM MESH

WEIGHT: EB45-2 2590 LBS.

NOISE: 72.0 dBA



INDUSTRIAL MAID
INDUSTRIAL MAID LLC
351 S. 12TH RD.
CORTLAND, NE 68331
Ph. (402) 798-7116
Fax (402) 798-7117
www.industrial-maid.com

COPYRIGHT: This document and the information contained may not be reproduced or distributed without express written consent of INDUSTRIAL MAID. Unauthorized reproduction, disclosure, or manufacturing use are prohibited by copyright law.