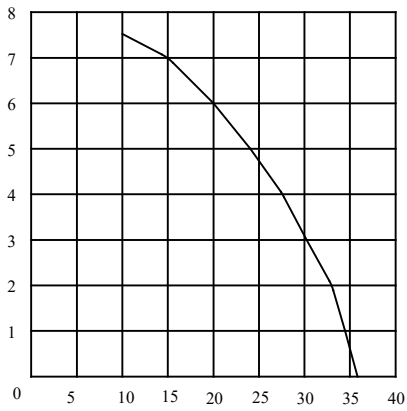
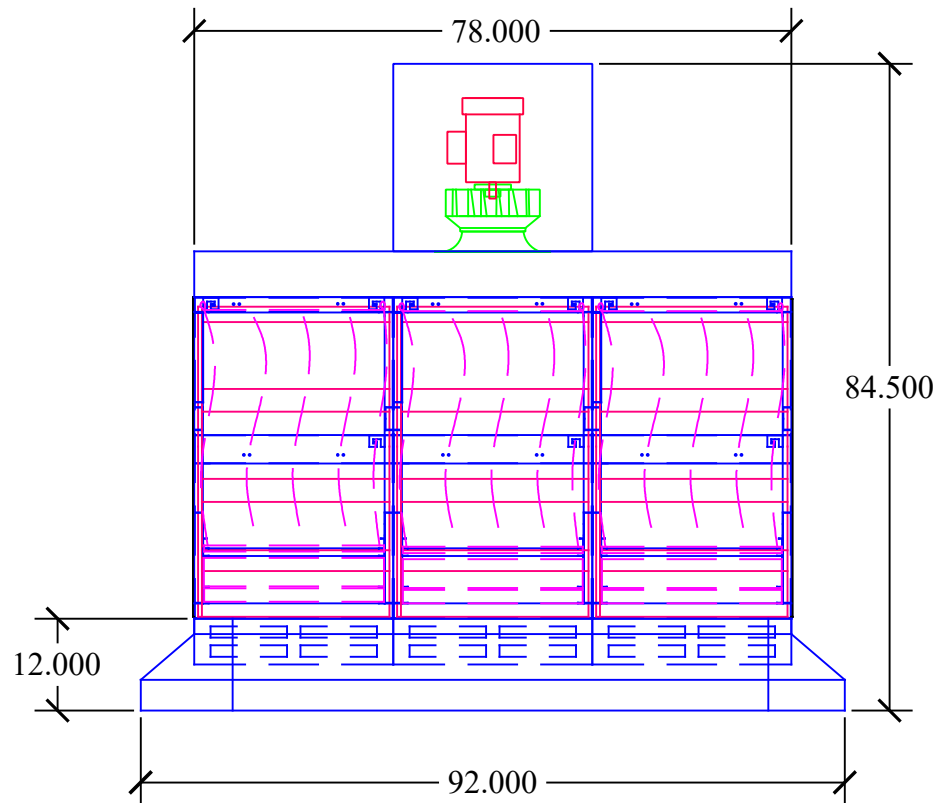
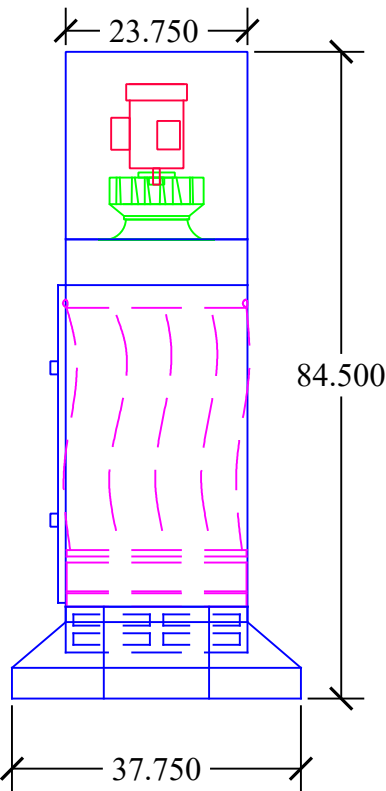
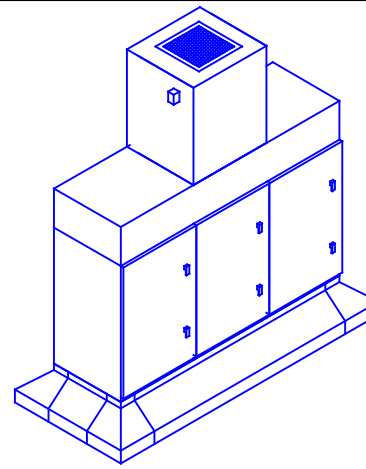


PRESSURE IN. W.G.



CFM X's 100



SHEET TITLE: **AZTech RH36V-1X3**

DRWG. NO.: **RH36V133-092211** DRAWN BY: **TAA**

DATE: **05/14/18** SCALE: **NTS**

SPECIFICATIONS:

DIMENSIONS: 84.5"H X 92" W X 38" D

MOTOR: 3HP, 230/460/3/60, 8.6/4.3 FLA

CFM: 3300 CFM @ 2.0" W.G.

ELECTRICAL: WIRED TO JCT. BOX

BLOWER: DIRECT DRIVE BI WHEEL

CONSTRUCTION: 12 & 14 GA POWDER COATED STEEL FRAME. (3) 16 GA STEEL DOORS. 3/16 POLYETHYLENE PANELS. ADJ. COMPRESSION HINGES 11 & 12 GA HOOD FRAME 18 GA HOOD, GREY POWDER COAT CAM DOOR AND FILTER LATCHES DUST PROOF LED LIGHT KIT

STD. FILTERS: (3) 2" BAFFLE FILTER (3) 4" PLEATED PREFILTER (3) 95% BAG FILTER

OPTIONAL FILTERS: (3) 2" ALUMINUM MESH FILTERS (6) 26 LB CARBON MODULES (3) 2" POLY PADS (3) 2" OR 4" MIST ELIMINATORS (3) 99.97% HEPA AFTERFILTERS

OPTIONS: EYEBOLTS (INSTALLED) ACOUSTIC LINING MAGNAHELIC PRESSURE GAUGE THERMAL SENSOR/ POWER CUT OFF CUSTOM HOOD SIZES

WEIGHT: 875 LBS

NOISE: 80.2 dBA



INDUSTRIAL MAID

MFG. BY:

INDUSTRIAL MAID LLC
 351 S. 12TH RD.
 CORTLAND, NE 68331
 Ph. (402) 798-7116
 Fax (402) 798-7117
 www.industrial-maid.com

DISTRIBUTED BY:

COPYRIGHT: This document and the information contained may not be reproduced or distributed without express written consent of INDUSTRIAL MAID. Unauthorized reproduction, disclosure, or manufacturing use are prohibited by copyright law.