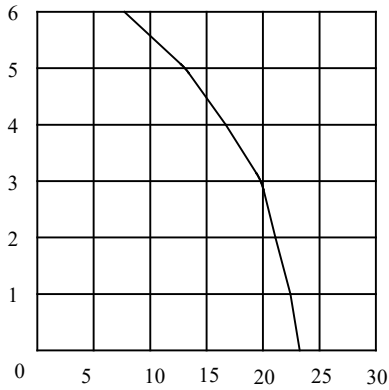
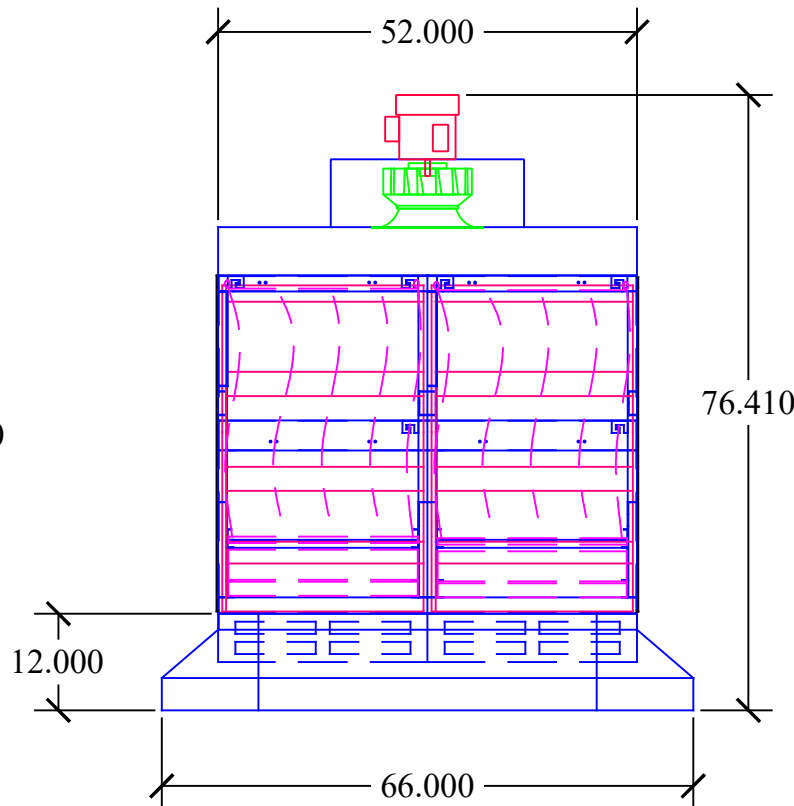
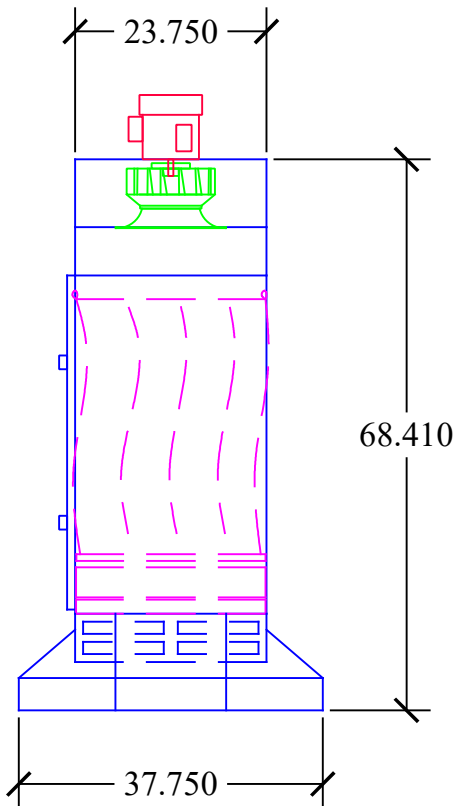
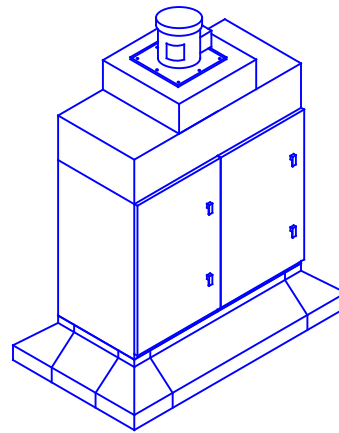


PRESSURE IN. W.G.



CFM X's 100



SHEET TITLE : AZTech RH36V-1X2

DRWG. NO.: RH36V1215-012907 DRAWN BY: TAA

DATE: 05/14/18 SCALE: NTS

SPECIFICATIONS:

- DIMENSIONS: 76.5" H X 66" W X 38" D
- MOTOR: 1.5 HP 230/460/3/60, 4.6/2.3 AMPS
- CFM: 2,000 CFM @ 3" W.G.
- ELECTRICAL: WIRED TO JUNCTION BOX
- BLOWER: DIRECT DRIVE BI WHEEL
- CONSTRUCTION: 12 & 14 GA POWDER COATED STEEL FRAME. 16 GA STEEL DOOR. 3/16 POLYETHYLENE PANELS. FULL CARBON STEEL CONSTRUCTION AVAILABLE. 11 & 18 GA HOOD CAM DOOR AND FILTER LATCHES DUST PROOF LED LIGHT KIT
- STD. FILTERS: (2) 2" BAFFLES
(2) 4" PLEATS
(2) 95% MAIN BAG, 108 SF EACH
- OPTIONAL FILTERS: 2" MIST ELIMINATOR
26 LB CARBON AFTERFILTER
2" POLY PREFILTER
4" PLEATED PREFILTER
2" ALUMINUM MESH PREFILTER
99.97% HEPA AFTERFILTER
- OPTIONS: EYEBOLTS (INSTALLED)
ACOUSTIC LINING
MAGNAHELIC PRESSURE GAUGE
THERMAL SENSOR/ POWER CUT OFF
CUSTOM HOOD SIZES
- WEIGHT: 623 LBS.
- NOISE: 69.5 dBA



INDUSTRIAL MAID

MFG. BY:

INDUSTRIAL MAID LLC
351 S. 12TH RD.
CORTLAND, NE 68331
Ph. (402) 798-7116
Fax (402) 798-7117
www.industrial-maid.com

DISTRIBUTED BY:

COPYRIGHT: This document and the information contained may not be reproduced or distributed without express written consent of INDUSTRIAL MAID. Unauthorized reproduction, disclosure, or manufacturing use are prohibited by copyright law.