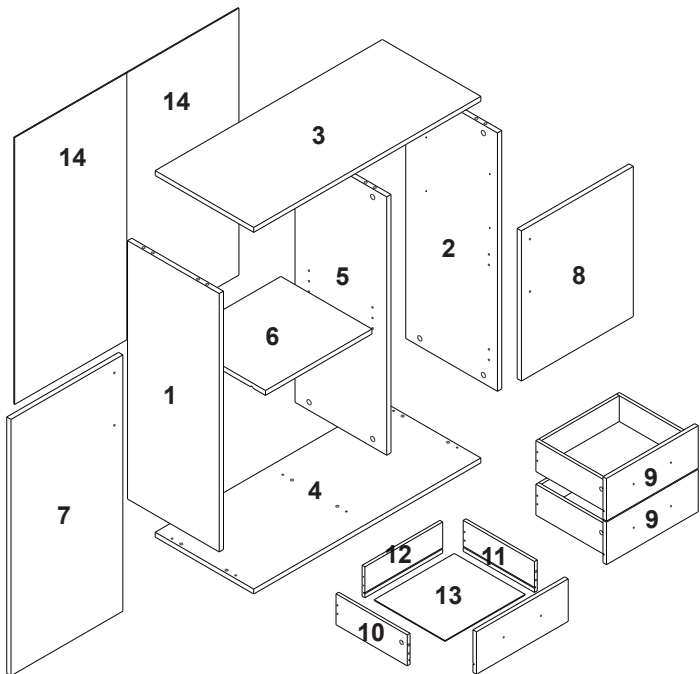


# MODEL NO: JOANA 2P 2C BUFFET

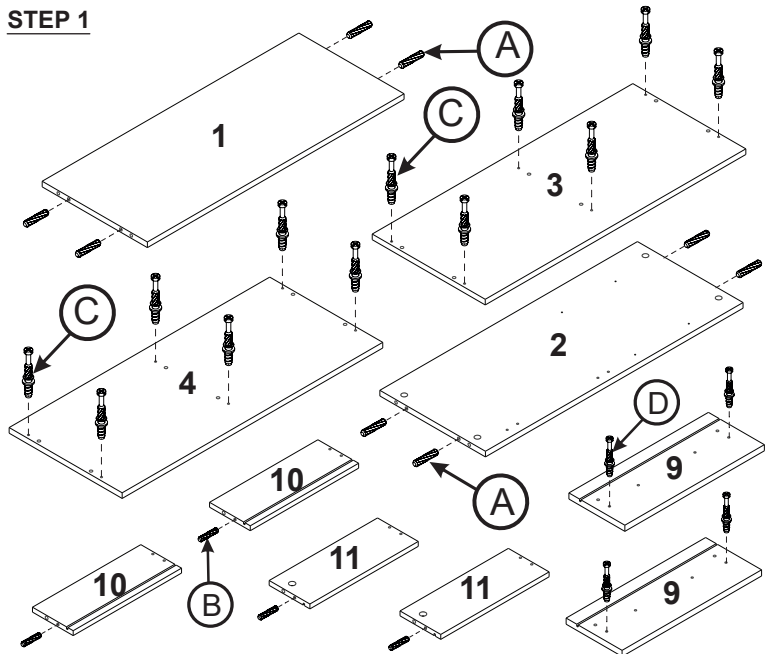
BLANCO CAMBRIA / BLANCO CEMENTO

ACCESSORIES		QTY
(A) DOWEL Ø8 X 30mm		12 pcs
(B) DOWEL Ø6 X 25mm		4 pcs
(C) CAM BOLT & NUT (15mm)		12 set
(D) CAM BOLT & NUT (12mm)		4 set
(E) C/B SCREW M4 X 38mm		8 pcs
(F) C/B SCREW M3.5 X 16mm		24 pcs
(G) C/B SCREW M4 X 30mm		8 pcs
(H) PVC HANDLE AC 81		4 pcs
(I) HINGES 5/8"		4 pcs
(J) SHELF SUPPORT (METAL)		4 pcs
(K) DRAWER SLIDE 12" (T1.1)		2 set
(L) NAIL PIN 3/4"		34 pcs
(M) NAIL LEG		4 pcs
(N) MINIFIX CAP		10 pcs
(O) FURNITURE TIPS		1 set
(P) C/B SCREW M3.5 X 12mm		12 pcs

**CAUTION**  
 MATERIAL USE-LAMINATED PARTICLE BOARD AND FRAME \*TO USE SOFT, DRY, CLOTH \*DO NOT USE DETERGENT OR CHEMICAL \*AVOID CONTACT WITH WATER AND DIRECT SUNLIGHT \*TO BE ASSEMBLED ON A SOFT, DRY, CLEAN AND SMOOTH SURFACE.

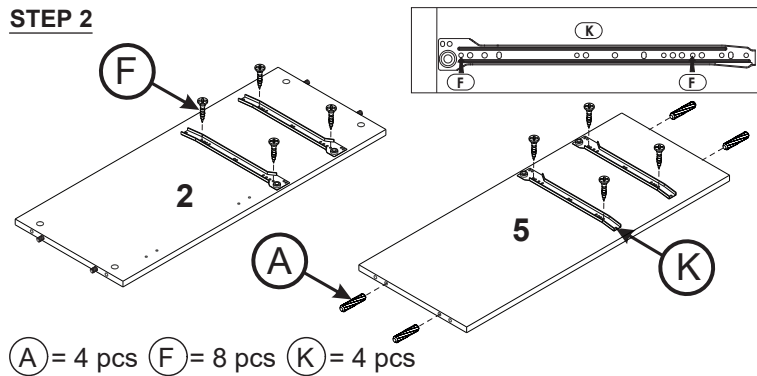


## STEP 1



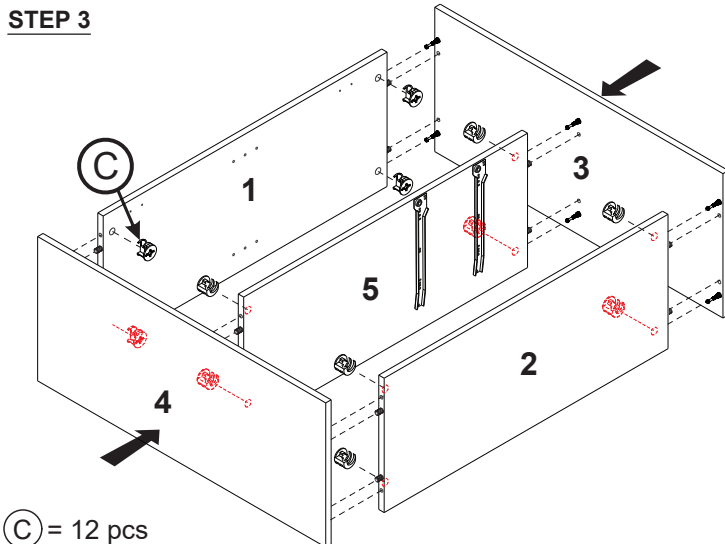
(A) = 8 pcs (C) = 12 pcs (B) = 4 pcs (D) = 4 pcs

## STEP 2



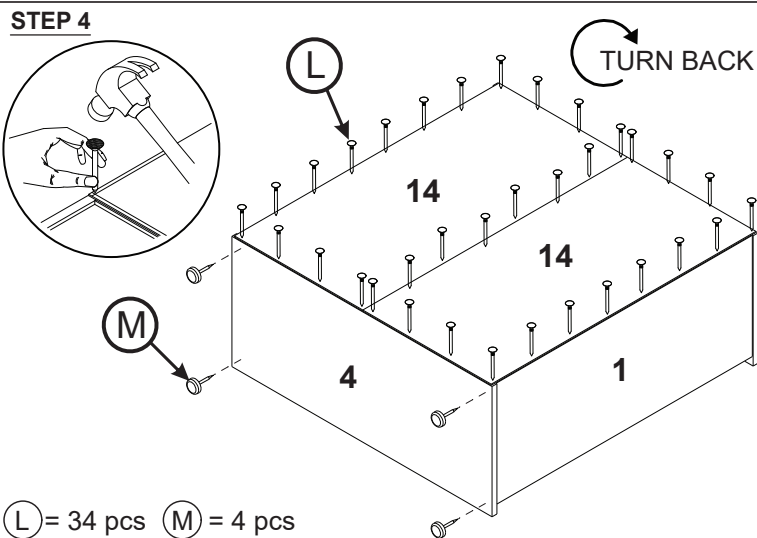
(A) = 4 pcs (F) = 8 pcs (K) = 4 pcs

## STEP 3



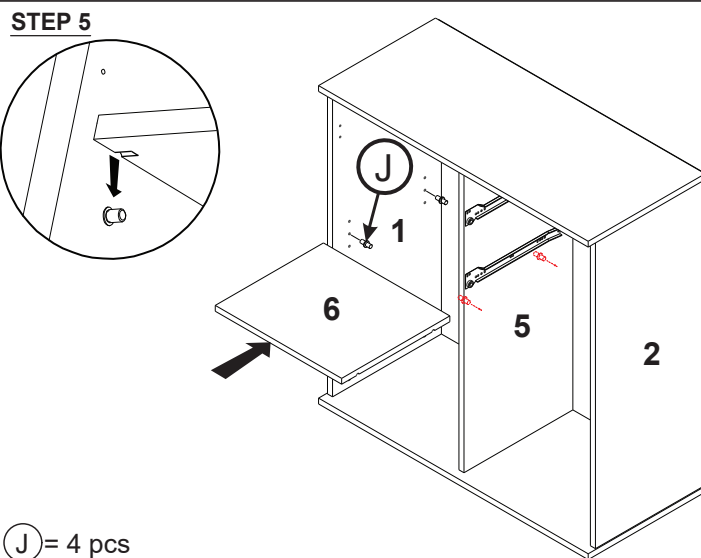
(C) = 12 pcs

## STEP 4



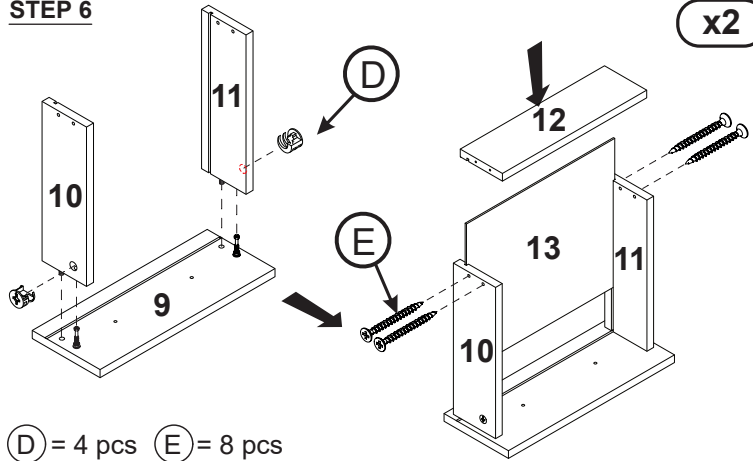
(L) = 34 pcs (M) = 4 pcs

## STEP 5

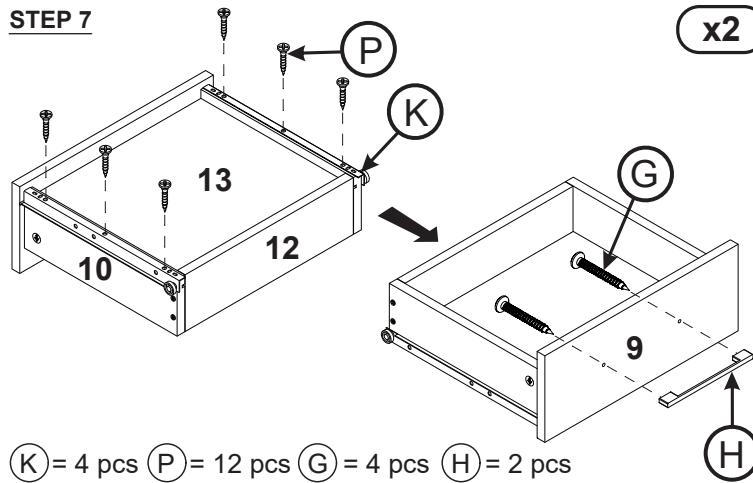


(J) = 4 pcs

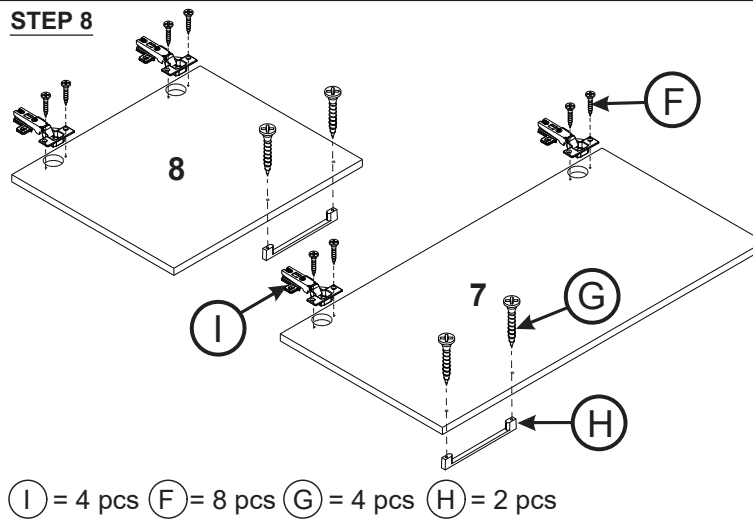
**STEP 6**



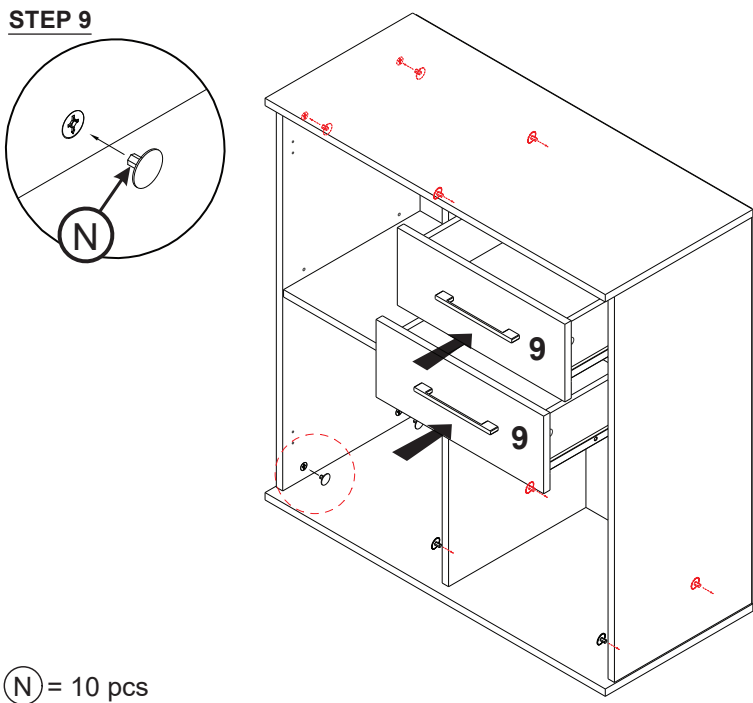
**STEP 7**



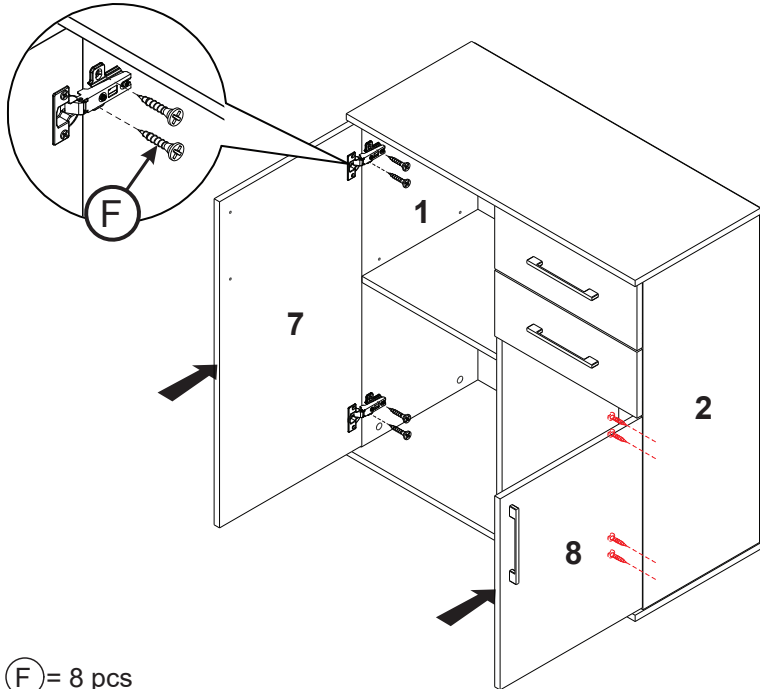
**STEP 8**



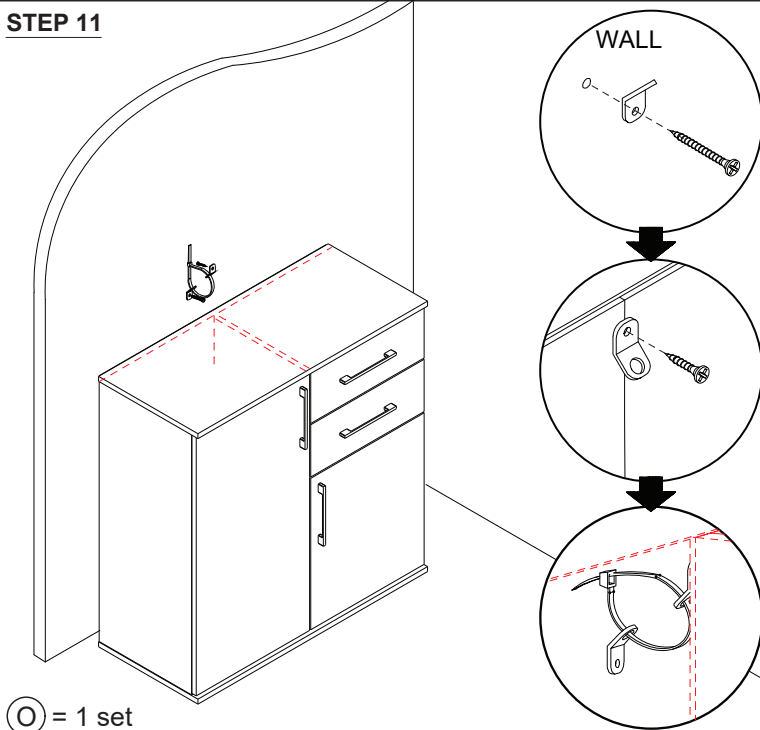
**STEP 9**



**STEP 10**



**STEP 11**



**COMPLETE**

