

PRICING



September 2023

form

FURNITURE MADE SIMPLE

PRICE LIST

Introduction	3
Seating	4
At Work	
Task Chair with Headrest	4
Mesh Task Chair	5
On Board	
High Back Conference Chair	7
Mid Back Conference Chair	8
Tables	9
Clean Slate	
Worktop	9
New Heights	
Table Base	11
Table Kits	12
Storage	13
Stash	
Cart	13
Drawer	15
Tower	17
Monitor Arms	19
Balancing Act	
Single Monitor Arm	19
Dual Monitor Arm	21
Slider	23
Support	
Finishes	24
Care and Maintenance	26
Product Testing and Sustainability	27
Terms and Conditions	29

PRODUCTS & PRICES

Form believes the workspace should empower people to communicate, collaborate, solve problems, and enjoy their experiences. We make furniture simple by providing authentic solutions for the modern work environment that are beautiful, functional, and sensibly priced.

That's our gig, and here are our products and prices.

Form: When You Work.

Form: Where You Work.

Form: How You Work.

AT WORK

Task Chair with Headrest



Black
1302-ONBO-0IIPP

List Price
\$1,300

Finishes
Back: Black Woven
Seat: Black Woven
Frame: Black
Base: Polished Aluminum

Details

- Height adjustable with synchronized reclining mechanism
- Tension control and multiple locking positions
- 4D armrest
- Arm support with height and width adjustment
- Adjustable seat depth
- High density molded foam seat and back cushion
- Polished aluminum frame and base

Chair
Chair Height: 48.6"-52.55"
Chair Width: 24.61"-26.57"
Chair Depth: 21.26"-23.62"

Seat
Seat Depth: 18.5"-21"
Seat Height: 17.52"-21.56"
Seat Width: 19.25" cushion

Arm
Arm Height: 24.41"-27.56"
Arm Length: 9"
Arm Width: 3.25"
Inside Arm Width: 18.75"-20.75"

Seat/Back
High Density Molded Foam

Gas Lift
KGS Class 4

Mechanism
Donati Synchronized

Weight Limit
300 lbs

Shipping Box
37.8" x 13" x 25.2"

Shipping Weight
47.5 lbs

Product Warranty
12 years components
5 years on textiles, fabric, mesh

Product Certificate
Greenguard Gold
ANSI/BIFMA X5.1-2017

AT WORK

Mesh Task Chair



Grey and Black Woven
1102-ATWO-0BGBB

List Price
\$1,035

Finishes

Back: Grey Mesh
Seat: Black Woven
Frame: Black
Base: Black



Grey and Black Micro-Leather
1102-ATWO-0AGBB

List Price
\$1,075

Finishes

Back: Grey Mesh
Seat: Black Micro-Leather
Frame: Black
Base: Black



Grey
1102-ATWO-0GGWP

List Price
\$1,165

Finishes

Back: Grey Mesh
Seat: Grey Woven
Frame: White
Base: Polished Aluminum

Details

- Height adjustable task chair with synchronized reclining mechanism
- Tension control and multiple locking positions
- 4D arm rest
- Arm support with height and width adjustment
- Adjustable seat depth
- High density molded foam seat cushion
- Breathable mesh back
- Adjustable lumbar support

Chair

Chair Height: 40.5" - 44.5"
Chair Width: 24.61"-26.57"
Chair Depth: 21.26"-23.62"

Seat

Seat Depth: 18.5" - 21"
Seat Height: 17.52"-21.56"
Seat Width: 19.25" cushion

Arm

Arm Height: 7.87"-11.02"
Arm Length: 9"
Arm Width: 3.25"
Inside Arm Width: 18.75" - 20.75"

Seat/Back

High density molded foam

Gas Lift

KGS Class 4

Mechanism

Donati Synchronized

Weight Limit

300 lbs

Shipping Box

30.31" x 14.17" x 25.59"

Shipping Weight

41.22 lbs

Product Warranty

12 years components
5 years on textiles, fabric, mesh

Product Certificate

BIFMA GREENGUARD
Gold

AT WORK

Mesh Task Chair



Black With Black Base
1102-ATWO-0BBBB

List Price
\$1,035

Finishes

Back: Black Mesh
Seat: Black Woven
Frame: Black
Base: Black



Black With Polished Base
1102-ATWO-0BBBBP

List Price
\$1,075

Finishes

Back: Black Mesh
Seat: Black Woven
Frame: Black
Base: Polished Aluminum

Details

- Height adjustable task chair with synchronized reclining mechanism
- Tension control and multiple locking positions
- 4D arm rest
- Arm support with height and width adjustment
- Adjustable seat depth
- High density molded foam seat cushion
- Breathable mesh back
- Adjustable lumbar support

Chair

Chair Height: 40.5" - 44.5"
Chair Width: 24.61"-26.57"
Chair Depth: 21.26"-23.62"

Seat

Seat Depth: 18.5" - 21"
Seat Height: 17.52"-21.56"
Seat Width: 19.25" cushion

Arm

Arm Height: 7.87"-11.02"
Arm Length: 9"
Arm Width: 3.25"
Inside Arm Width: 18.75" - 20.75"

Seat/Back

High density molded foam

Gas Lift

KGS Class 4

Mechanism

Donati Synchronized

Weight Limit

300 lbs

Shipping Box

30.31" x 14.17" x 25.59"

Shipping Weight

41.22 lbs

Product Warranty

12 years components
5 years on textiles, fabric, mesh

Product Certificate

BIFMA GREENGUARD
Gold

ON BOARD

High Back Conference Chair



Grey
1302-ONBO-0IIPP

List Price
\$1,935

Finishes
Upholstery:
Grey Micro-Leather
Frame and Base:
Polished Aluminum



Grey-Beige

List Price
\$1,935

Finishes
Upholstery:
Grey-Beige Micro-Leather
Frame and Base:
Polished Aluminum



Brown
1302-ONBO-0NNPP

List Price
\$1,935

Finishes
Upholstery:
Brown Micro-Leather
Frame and Base:
Polished Aluminum



Graphite
1302-ONBO-0GGPP

List Price
\$1,935

Finishes
Upholstery:
Graphite Micro-Leather
Frame and Base:
Polished Aluminum

Details

- Height adjustable
- Synchronized reclining mechanism with tension control and multiple locking positions
- Fixed aluminum arms
- Adjustable seat depth

Chair
Chair Height: 44.29"–46.85"
Chair Width: 23.82"
Chair Depth: 23.43"

Seat
Seat Depth: 18.5" – 20"
Seat Height: 17.32"–21.26"
Seat Width: 19.75"

Arm
Arm Height: 7.54"
Arm Length: 10.25"
Inside Arm Width: 21.26"

Seat/Back
High density molded foam

Gas Lift
KGS Class 4

Mechanism
Bock syncro-tilt mech

Weight Limit
300 lbs

Shipping Box
38" x 25.2" x 18.5"

Shipping Weight
60 lbs

Product Warranty
12 years components
5 years on textiles

Product Certificate
Greenguard Gold
ANSI/BIFMA X5.1-2017

ON BOARD

Mid Back Conference Chair



Grey
1301-ONBO-0IIPP

List Price
\$1,935

Finishes
Upholstery:
Grey Micro-Leather
Frame and Base:
Polished Aluminum



Grey-Beige

List Price
\$1,935

Finishes
Upholstery:
Grey-Beige Micro-Leather
Frame and Base:
Polished Aluminum



Brown
1301-ONBO-0NNPP

List Price
\$1,935

Finishes
Upholstery:
Brown Micro-Leather
Frame and Base:
Polished Aluminum



Graphite
1301-ONBO-0GGPP

List Price
\$1,935

Finishes
Upholstery:
Graphite Micro-Leather
Frame and Base:
Polished Aluminum

Details

- Height adjustable
- Synchronized reclining mechanism with tension control and multiple locking positions
- Fixed aluminum arms
- Adjustable seat depth

Chair
Chair Height: 44.29"–46.85"
Chair Width: 23.82"
Chair Depth: 23.43"

Seat
Seat Depth: 18.5" – 20"
Seat Height: 17.32"–21.26"
Seat Width: 19.75"

Arm
Arm Height: 7.54"
Arm Length: 10.25"
Inside Arm Width: 21.26"

Seat/Back
High density molded foam

Gas Lift
KGS Class 4

Mechanism
Bock syncro-tilt mech

Weight Limit
300 lbs

Shipping Box
32.7" x 26" x 17.3"

Shipping Weight
53.68 lbs

Product Warranty
12 years components
5 years on textiles

Product Certificate
Greenguard Gold
ANSI/BIFMA X5.1-2017

CLEAN SLATE

Powder Coat Worktops with Comfort Edge



Perfect White
2202-CLEA-3060W

List Price
\$685

Finish
Powder Coat: Perfect White

Grey-Beige
2202-CLEA-3060I

List Price
\$685

Finish
Powder Coat: Grey-Beige

Details

- MDF substrate
- Comfort edge on powder coat finish worktops
- Pre-drilled pilot holes
- FSC Certified
- Sustainable, smooth and durable finish
- Made in America

Worktop
Width: 60"
Depth: 30"
Thickness: 0.75"

Additional Sizes Available
30" x 66"
30" x 72"
24" x 60"
24" x 66"
24" x 72"

Shipping Box
30" x 60" x 0.75"

Shipping Product Weight
75 lbs

Product Warranty
5 Years

Product Certificate
SCS Indoor Advantage Gold

CLEAN SLATE

Laminate Worktops



Grey Elm
2201-CLEA-3060Y

List Price
\$725

Finish
Laminate: Grey Elm



Walnut
2201-CLEA-3060U

List Price
\$725

Finish
Laminate: Walnut



Graphite Ash
2202-CLEA-3060T

List Price
\$725

Finish
Laminate: Graphite Ash

Details

- MDF substrate
- Pre-drilled pilot holes
- FSC Certified
- Sustainable, smooth and durable finish
- Made in America

Worktop
Width: 60"
Depth: 30"
Thickness: 0.75"

Additional Sizes Available
30" x 66"
30" x 72"
24" x 60"
24" x 66"
24" x 72"

Shipping Box
30" x 60" x 0.75"

Shipping Product Weight
75 lbs

Product Warranty
5 Years

Product Certificate
SCS Indoor Advantage Gold

NEW HEIGHTS

Table Base



Perfect White
2101-NEWH-CL30W

List Price
\$1,100

Finish
Powder Coat: Perfect White



Grey
2101-NEWH-CL30G

List Price
\$1,100

Finish
Powder Coat: Grey



Warm Metallic
2101-NEWH-CL30A

List Price
\$1,100

Finish
Powder Coat: Warm Metallic



Graphite
2101-NEWH-CL30C

List Price
\$1,100

Finish
Powder Coat: Graphite

Details

- C-Leg base
- Powder coated steel
- 30" Height Adjustable
- Electronic drive system: iDrive with a PSU A02 of 29 volts <48dB/ silent: 38dB
- Anti-collision technology
- Three-stage leg
- Simple controls
- Supports worktop sizes of 40 - 72" with and 24" - 30" depth

Table Base
Height: 24.4" - 50"
Width (frame): 41" - 59.5"
Depth: 23.6" or 27.56"

Table Tops Supported
Width: 39.38"-70.87"
Depth: 23.62"-31.50"

Product Material
Powder coated steel

Speed
1.3" per second

Max Weight Capacity
240 lbs (120 lbs/leg)

Product Weight
55.11 lbs

Shipping Box
45" x 11.5" x 7"

Shipping Product Weight
62 lbs

Product Warranty
10 years (not including handset)
5 years for handset and electronics

Product Certificates
SCS Indoor Advantage Gold
Meets BIFMA x5.5- 2021
Meets ANSI BIFMA e3 2019 (sect 7.6.1,7.6.2,7.6.3)
UL962 certified
EN-527 certified

NEW HEIGHTS

Table Kits



**Perfect White Worktop
With Grey Table Base**
2001-NEWH-BY306

List Price
\$X,XXX

Finishes

Powder Coat Top:
Perfect White
Powder Coat Base:
Grey



**Walnut Worktop
With Perfect White Table Base**
2001-NEWH-WU306

List Price
\$X,XXX

Finishes

Laminate Top:
Walnut
Powder Coat Base:
Perfect White



**Graphite Ash Worktop
With Graphite Table Base**
2001-NEWH-BY306

List Price
\$X,XXX

Finishes

Laminate Top:
Graphite Ash
Powder Coat Base:
Graphite

Details

Worktop:

- MDF substrate
- Comfort edge on Powder Coat finish
- Pre-drilled pilot holes
- FSC Certified: Sustainable, smooth and durable finish

Adjustable Base:

- C-Leg base, powder coated steel
- 30" Height Adjustable
- Electronic drive system: iDrive with a PSU A02 of 29 volts

• <48dB/ silent: 38dB

- Three-stage leg
- Simple controls
- Supports worktop sizes of 40"-72" width and 24"-32" depth

Table

Height: 24.4" - 50.00"
Width: 59"
Depth: 29"

Standard Height Range
23"-48.66"

Speed

1.3" per second

Max Weight Capacity

240 lbs

Product Weight

XX lbs

Shipping Box

45" x 11.5" x 7"

Shipping Product Weight

62 lbs

Worktop Warranty

5 Years

Table base Warranty

10 years (not including handset)
5 years for handset and electronics

Product Certificates

SCS Indoor Advantage Gold
Meets BIFMA x5.5- 2021
Meets ANSI BIFMA e3 2019 (sect 7.6.1,7.6.2,7.6.3)
UL962 certified
EN-527 certified

STASH

Cart



Perfect White
3101-STAS-00LHW

List Price
\$775

Finish
Powder Coat: Perfect White

Grey-Beige
3101-STAS-00LH

List Price
\$775

Finish
Powder Coat: Grey-Beige

Graphite
3101-STAS-00LHC

List Price
\$775

Finish
Powder Coat: Graphite

Details

- Powder coated steel
- Lockable casters
- Handle

Cart
Cart Height: 19.05"
Cart Width: 16"
Cart Depth: 18"

Weight Capacity
300 lbs

Shipping Box
21.3" x 15" x 21"

Shipping Product Weight
34 lbs

Product Warranty
5 Years

Product Certificate
Meets BIFMA x5.9-2021 (pending)
Patent Pending

STASH

Cart



Grey-Green
3101-STAS-00LHE

List Price
\$775

Finish
Powder Coat: Grey-Green



Red-Brown
3101-STAS-00LHR

List Price
\$775

Finish
Powder Coat: Red-Brown

Details

- Powder coated steel
- Lockable casters
- Handle

Cart
Cart Height: 19.05"
Cart Width: 16"
Cart Depth: 18"

Weight Capacity
300 lbs

Shipping Box
21.3" x 15" x 21"

Shipping Product Weight
34 lbs

Product Warranty
5 Years

Product Certificate
Meets BIFMA x5.9-2021 (pending)

Patent Pending

STASH

Drawer



Perfect White
3102-STAS-00LHW

List Price
\$800

Finish
Powder Coat: Perfect White

Grey-Beige
3102-STAS-00LHI

List Price
\$800

Finish
Powder Coat: Grey-Beige

Graphite
3102-STAS-00LHC

List Price
\$800

Finish
Powder Coat: Graphite

Details

- Powder coated steel
- Lockable casters
- Drawer

Cart
Cart Height: 19.05"
Cart Width: 12"
Cart Depth: 18"

Drawer
Drawer Height: 4"

Weight Capacity
300 lbs

Shipping Box
21.26" x 19.29" x 20.86"

Shipping Product Weight
33lbs

Product Warranty
5 Years

Product Certificate
Meets BIFMA x5.9-2021 (pending)

Patent Pending

STASH

Drawer



Grey-Green
3102-STAS-00LHE

List Price
\$800

Finish
Powder Coat: Grey-Green



Red-Brown
3102-STAS-00LHR

List Price
\$800

Finish
Powder Coat: Red-Brown

Details

- Powder coated steel
- Lockable casters
- Drawer

Cart
Cart Height: 19.05"
Cart Width: 12"
Cart Depth: 18"

Drawer
Drawer Height: 4"

Weight Capacity
300 lbs

Shipping Box
21.26" x 19.29" x 20.86"

Shipping Product Weight
33lbs

Product Warranty
5 Years

Product Certificate
Meets BIFMA x5.9-2021 (pending)
Patent Pending

STASH

Tower



Perfect White
3103-STAS-00LHW

List Price
\$1,125

Finish
Powder Coat: Perfect White



Grey-Beige
3103-STAS-00LHI

List Price
\$1,125

Finish
Powder Coat: Grey-Beige



Graphite
3103-STAS-00LHC

List Price
\$1,125

Finish
Powder Coat: Graphite

Details

- Powder coated steel
- Lockable casters
- Handle
- Three shelves

Cart
Cart Height: 30.05"
Cart Width: 14"
Cart Depth: 20"

Shelves
Large Openings Height: 12.25"
Small Opening Height: 5.5"

Weight Capacity
300 lbs

Shipping Box
23.24" x 16.93" x 37.80"

Shipping Product Weight
61.62 lbs

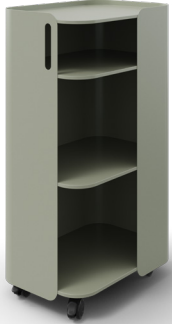
Product Warranty
5 Years

Product Certificate
Meets BIFMA x5.9-2021 (pending)

Patent Pending

STASH

Tower



Grey-Green
3103-STAS-00LHE

List Price
\$1,125

Finish
Powder Coat: Grey-Green



Red-Brown
3103-STAS-00LHR

List Price
\$1,125

Finish
Powder Coat: Red-Brown

Details

- Powder coated steel
- Lockable casters
- Handle
- Three shelves

Cart
Cart Height: 30.05"
Cart Width: 14"
Cart Depth: 20"

Shelves
Large Openings Height: 12.25"
Small Opening Height: 5.5"

Weight Capacity
300 lbs

Shipping Box
23.24" x 16.93" x 37.80"

Shipping Product Weight
61.62 lbs

Product Warranty
5 Years

Product Certificate
Meets BIFMA x5.9-2021 (pending)

Patent Pending

BALANCING ACT

Single Monitor Arm with Bolt-Thru Attachment



Perfect White

5101-BALA-OBT1W

List Price

\$405

Finish

Powder Coat: Perfect White

Grey

5101-BALA-OBT1G

List Price

\$405

Finish

Powder Coat: Grey

Graphite

5101-BALA-OBT1B

List Price

\$405

Finish

Powder Coat: Graphite

Details

- Cable Management concealed within arm
- Option of Clamp or Bolt-Thru mounting
- Rotation limiter, dynamic motion technology
- Sliders available for use with large monitors

Arm

Height: 18.62" fully extended
Depth: 20.12" fully extended
Base Width and Depth: 5.12"

Extended Arm Reach From Desk Edge
20.11"

Vertical Arm Adjustment Range
9.92"

Monitor Pivot Range
Tilt +/-80°
Swivel +/-90°
360 Monitor Rotation

Monitor Weight Supported
19.8 lbs

Monitor Size Supported
32"+

VESA Compliant
Yes, 75mm, 100mm

Shipping Box
20" x 14.2" x 6.7"

Shipping Product Weight
11.22 lbs

Product Warranty
12 Years

Product Certificate
BIFMA X5.5



BALANCING ACT

Single Monitor Arm with Clamp Attachment



Perfect White
5101-BALA-0CM1W

List Price
\$405

Finish
Powder Coat: Perfect White

Grey
5101-BALA-0CM1G

List Price
\$405

Finish
Powder Coat: Grey

Graphite
5101-BALA-0CM1B

List Price
\$405

Finish
Powder Coat: Graphite

Details

- Cable Management concealed within arm
- Option of Clamp or Bolt-Thru mounting
- Rotation limiter, dynamic motion technology
- Sliders available for use with large monitors

Arm
Height: 18.62" fully extended
Depth: 20.12" fully extended
Base Width and Depth: 5.12"

Extended Arm Reach From Desk Edge
20.11"

Vertical Arm Adjustment Range
9.92"

Monitor Pivot Range
Tilt +/-80°
Swivel +/-90°
360 Monitor Rotation

Monitor Weight Supported
19.8 lbs

Monitor Size Supported
32"+

VESA Compliant
Yes, 75mm, 100mm

Shipping Box
20" x 14.2" x 6.7"

Shipping Product Weight
11.22 lbs

Product Warranty
12 Years

Product Certificate
BIFMA X5.5



BALANCING ACT

Dual Monitor Arm with Bolt-Thru Attachment



Perfect White
5102-BALA-OBT2W

List Price
\$715

Finish
Powder Coat: Perfect White



Grey
5102-BALA-OBT2G

List Price
\$715

Finish
Powder Coat: Grey



Graphite
5102-BALA-OBT2B

List Price
\$715

Finish
Powder Coat: Graphite

Details

- Cable Management concealed within arm
- Option of Clamp or Bolt-Thru mounting
- Rotation limiter, dynamic motion technology
- Sliders available for use with large monitors

Arm
Height: 18.62" fully extended
Width: 33.35"
Depth: 20.12" fully extended

Base
Base Width: 5.93"
Base Depth: 5.12"

Extended Arm Reach From Desk Edge
20.11"

Vertical Arm Adjustment Range
9.92"

Monitor Pivot Range
Tilt +/80°
Swivel +/90°
360 Monitor Rotation

Monitor Weight Supported
19.8 lbs each arm

Monitor Size Supported
32"+

VESA Compliant
Yes, 75mm, 100mm

Shipping Box
20" x 14.2" x 6.7"

Shipping Product Weight
16.06 lbs

Product Warranty
12 Years

Product Certificate
BIFMA X5.5



BALANCING ACT

Dual Monitor Arm with Clamp Attachment



Perfect White
5102-BALA-0CM2W

List Price
\$715

Finish
Powder Coat: Perfect White



Grey
5102-BALA-0CM2G

List Price
\$715

Finish
Powder Coat: Grey



Graphite
5102-BALA-0CM2B

List Price
\$715

Finish
Powder Coat: Graphite

Details

- Cable Management concealed within arm
- Option of Clamp or Bolt-Thru mounting
- Rotation limiter, dynamic motion technology
- Sliders available for use with large monitors

Arm
Height: 18.62" fully extended
Width: 33.35"
Depth: 20.12" fully extended

Base
Base Width: 5.93"
Base Depth: 5.12"

Extended Arm Reach From Desk Edge
20.11"

Vertical Arm Adjustment Range
9.92"

Monitor Pivot Range
Tilt $\pm 80^\circ$
Swivel $\pm 90^\circ$
360 Monitor Rotation

Monitor Weight Supported
19.8 lbs each arm

Monitor Size Supported
32"+

VESA Compliant
Yes, 75mm, 100mm

Shipping Box
20" x 14.2" x 6.7"

Shipping Product Weight
16.06 lbs

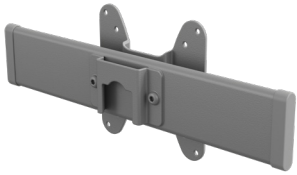
Product Warranty
12 Years

Product Certificate
BIFMA X5.5



BALANCING ACT

Slider



Grey
5201-BALA-0000S

Graphite
5201-BALA-0000C

List Price
\$95

List Price
\$95

Finish
Powder Coat: Grey

Finish
Powder Coat: Graphite

Details

- Quick release
- Aluminum construction

Slider
Height: 2.165"
Height with vesa plate: 4.57"
Width: 11.92"

Slider Range
11.4"

Monitor Pivot Range
Tilt +/-80°
Swivel +/-90°

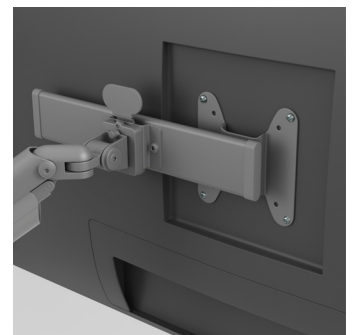
VESA Compliant
Yes, 75mm, 100mm

Shipping Box
13.78" x 7.28" x 4.3"

Shipping Product Weight
3 lbs

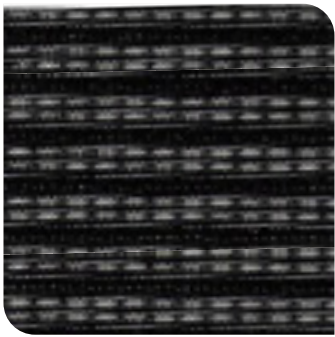
Product Warranty
12 Years

Product Certificate
BIFMA X5.5

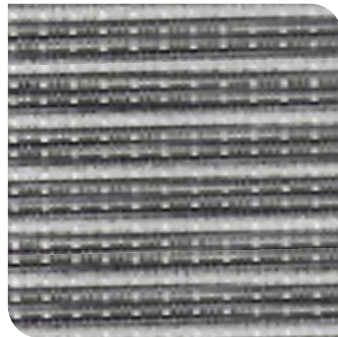


FINISH LIBRARY

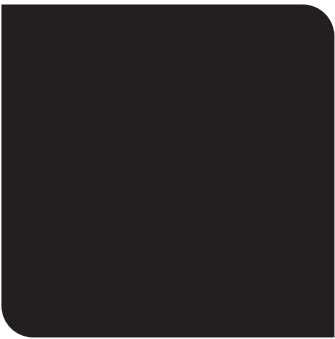
TEXTILES



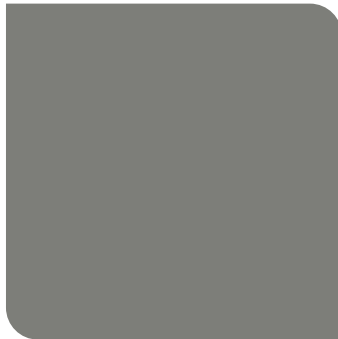
Black Mesh



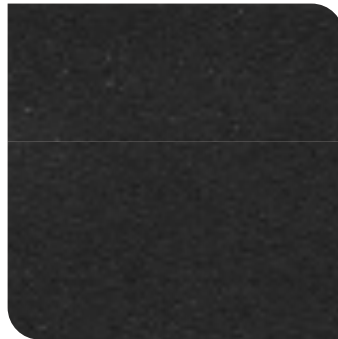
Grey Mesh



Black Woven



Grey Woven

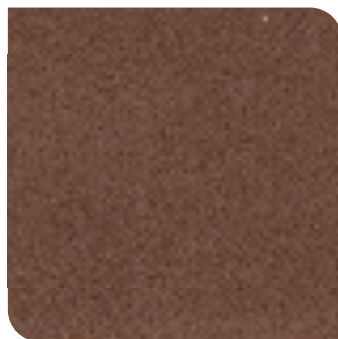


Black Micro-Leather

Finishes are available in specific combinations in the product offering. Please check product descriptions to confirm finish availability.



Grey Micro-Leather



Brown Micro-Leather



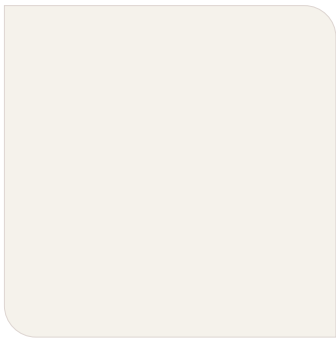
Grey-Beige Micro-Leather



Graphite Micro-Leather

FINISH LIBRARY

POWDER COAT



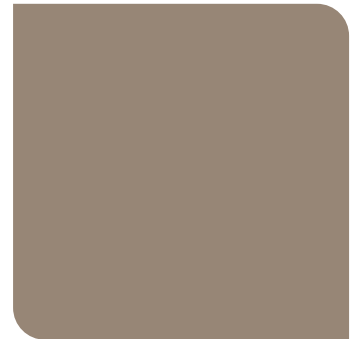
Perfect White



Grey



Warm Metallic



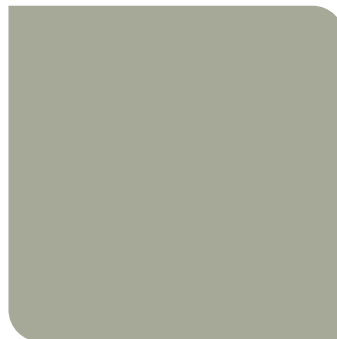
Grey-Beige



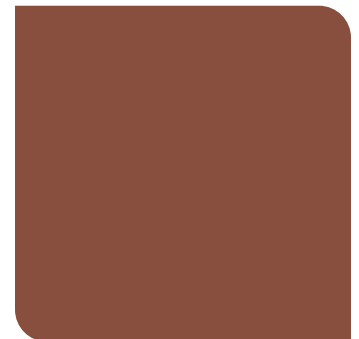
Graphite



Black



Grey-Green

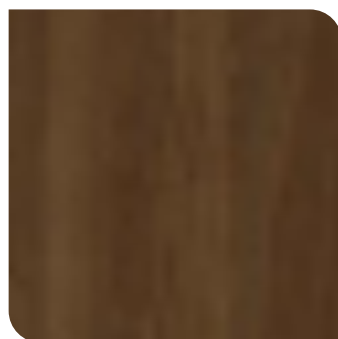


Red-Brown

LAMINATE



Grey Elm



Walnut



Graphite Ash

Finishes are available in specific combinations in the product offering.

Please check product descriptions to confirm finish availability.

CARE AND MAINTENANCE

Textiles

Vacuum fabric as needed using an upholstery attachment to remove dust or dirt. Do not use a fabric brush or rotary brush attachment.

Dry-clean or spot clean with solvent cleaner if further cleaning is required.

Leather

Dust with a dry or slightly damp lint free cloth. Gently wipe with a damp sponge with special detergent and then dry with a lint-free cloth.

Avoid leaving leather in direct sunlight for long periods of time.

Metal Surfaces

Aluminum surfaces should be cleaned with a dry cloth or nonferrous metal detergents.

Powder coat metal surfaces should be cleaned with a damp cloth and dried with a lint-free cloth. A water-dampened cloth and mild, non-detergent soap can also be used. Rinse with a water-dampened cloth and dry thoroughly.

Plastic Surfaces

Clean plastic surfaces with a water-dampened cloth. Dry thoroughly with a lint-free cloth.

Laminate Surfaces

Use a damp cloth or sponge and a mild soap or detergent. Rinse thoroughly with warm water and wipe dry.

Please refer to the Wilsonart website for cleaning instructions to clean specific types of stains:

https://www.wilsonart.com/media/Technical_Resources/en/hpl_cm.pdf

PRODUCT AND SUSTAINABILITY

PRODUCT	BIFMA X5.1-2017 (TYPE I, III)	BIFMA X5.5-2021	BIFMA X5.9-2019	BIFMA X5.4	ANSI/BIFMA M7.1-2011 (R2016)	ANSI/BIFMA X7.1-2011 (R2016)	ANSI/BIFMA E3-2019 (7.6.1,7.6.2,7.6.3)	GREEN GUARD UL 2818	INTERTEK CLEAN AIR GOLD	INDOOR AIR QUALITY/ ADVANTAGE GOLD (SCS global)	BIFMA LEVEL CERTIFICATION	WEIGHT CAPACITY (LBS)	WARRANTY
At Work Task Chair with Headrest (Upholstered Back)	✓	N/A	N/A	N/A	✓	✓	✓	✓				300	12 yrs
At Work Task Chair (Mesh Back)	✓	N/A	N/A	N/A	✓	✓	✓	✓				300	12 yrs
At Work Task Chair (Upholstered Back)	✓	N/A	N/A	N/A	✓	✓	✓	✓				300	12 yrs
On Board High Back Conference Chair	✓	N/A	N/A	N/A	✓	✓	✓	✓				300	12 yrs
On Board Mid Back Conference Chair	✓	N/A	N/A	N/A	✓	✓	✓	✓				300	12 yrs
Balancing Act Monitor Arms (Single, Dual & Slider)	N/A	Pending	N/A	N/A								19.8 per arm	10 yrs
Stash Cart	N/A	N/A	✓	N/A								300	5 yrs
Stash Drawer	N/A	N/A	✓	N/A								300	5 yrs
Stash Tower	N/A	N/A	✓	N/A								300	5 yrs
Clean Slate (Laminate Finish)	N/A	N/A	N/A	N/A								N/A	2 yrs
Clean Slate (Powder Coat Finish)	N/A	N/A	N/A	N/A								N/A	2 yrs
New Heights Adjustable Table Base	N/A	✓	N/A	N/A	✓	✓	✓		✓			240	10 yrs

PRODUCT TESTING AND SUSTAINABILITY

ANSI/BIFMA X5.1-2017(R2022)

General-Purpose Office Chairs – Tests.

Covers general office and institutional seating, side/guest chairs, stacking chairs, tablet armchairs, and stools.

These seating products are generally single seat and may incorporate adjustment features.

ANSI/BIFMA X5.5-2021

Desk and Table Products.

Covers traditional desks and tables, which may also include drawers or other storage features. In addition, this standard includes Benching, Height-Adjustable Tables, Tilt-Top Tables, Keyboard Tables, and Monitor Arms.

ANSI/BIFMA X5.9-2019

Storage Units.

Provides test methods for freestanding, mobile, and wall-mounted storage units.

ANSI/BIFMA X5.4-2020

Public and Lounge Seating.

Covers seating typically found in indoor public spaces such as waiting, reception, visitor seating in patient rooms, restaurant / dining / cafeteria settings and other gathering areas. Public and Lounge seating may also include units with multiple seating positions. Usually, these products have limited adjustment features.

ANSI/BIFMA M7.1-2011(R2021)

Standard Test Method for Determining VOC Emissions From Office Furniture Systems, Components, and Seating.

This test method is intended for determining volatile organic compound emissions from furniture under environmental and product usage conditions that are typical of those found in buildings.

ANSI/BIFMA X7.1-2011(R2021)

Standard for Formaldehyde and TVOC Emissions of Low-emitting Office Furniture and Seating.

Specifies acceptance levels that define low-emitting furniture independent of construction materials, manufacturing processes, mechanical designs, or aesthetic designs.

ANSI/BIFMA e3-2019

Furniture Sustainability Standard.

Provides measurable market-based definitions and establishes performance criteria for sustainable furniture. For more information on how the e3 Furniture Sustainability Standard integrates with LEVEL by BIFMA.

GREENGUARD UL 2818

Provides certification for low chemical emission products to help demonstrate both compliance with key chemical emission standards and a commitment to healthier indoor environments.

INTERTEK Clean Air Gold

States conformance to ANSI/ BIFMA e3 standard credits 7.6.1, 7.6.2 and/or credit 7.6.3, which includes California Department of Public Health (CDPH) Standard Method v1.2 01350 (2017), as well as conformance to low-emitting materials for WELL and LEED.

Indoor Advantage and Indoor Advantage Gold

This standard aligns with both ANSI/BIFMA M7.1 and X7.1, and CA 01350. It is recognized by the EPA and GSA, and qualifies for many building rating systems, including LEED v4.1, BREEAM, WELL Building, and Living Building Challenge.

BIFMA LEVEL Certification

3rd party certification process for evaluating environmentally preferable and socially responsible furniture that contributes to sustainable building ratings. The program offers three performance tiers: LEVEL 1, 2, and 3.

TERMS AND CONDITIONS

Terms & Conditions of Sale

These Terms & Conditions of Sale ("Terms") pertain to and are the only terms that govern all quotations and orders for FORM furniture products from Form Furniture LLC ("FORM"). These Terms and the applicable acknowledgment issued by FORM comprise the entire agreement between FORM and the purchaser described in the acknowledgment, and supersede all prior or contemporaneous understandings, agreements, negotiations representations, warranties and communications, whether written or oral.

Orders

Orders must include complete customer contact information including company name, phone number, contact person phone number & email address, bill to address, and ship to address with contact name and phone number.

Purchase orders require:

- Purchase order number
- Requested ship date/delivery date
- Quantities
- Complete model number (including textile code, where applicable)
- End user
- Unit price with discount
- PO total
- Acknowledgment email address
- Special instructions.

If the purchase order includes appropriate location/tagging information, FORM Furniture will gladly tag furniture items with their intended locations/tagging for ease of installation.

Purchase orders should be sent to:
orders@form-furniture.com

These Terms prevail over any terms contained in any purchase order or general terms and conditions of purchase, and any such additional or different terms are hereby rejected.

Order Acknowledgments

FORM's written acknowledgment indicates acceptance of the placed purchase order and is subject to FORM's Terms. Orders will be acknowledged within 48 hours of receipt of the PO. The acknowledgment is a detailed description of items, prices, shipping information and shipping date. Review the acknowledgment and notify FORM immediately if there are any discrepancies in the acknowledgment.

Prices

Except where otherwise noted in the acknowledgment, all prices are current list at the time the order is placed. Pricing does not include installation, shipping, taxes, or storage. FORM will make every effort to notify customers of any pricing or specifications changes, however, FORM reserves the right to change prices or specifications without notice.

Payment Terms

Standard terms are Net 30 from date of shipment and a 50% deposit is required for standard orders over \$50,000. A 50% non-refundable deposit is required for any order that contains custom product. A service charge of 2% per month, accrued monthly, will be assessed on all past due amounts, and FORM may suspend its delivery of products until all payments have been received in full.

Cancellation and Order Changes

Order changes or cancellations must be made more than 72 hours prior to the acknowledged ship date. Any changes or cancellations made to standard orders within 72 hours of the acknowledged ship date will incur a 15% change/cancellation fee. Additional re-stocking fees may apply. Orders that contain custom product cannot be changed or canceled.

Please contact FORM Customer Service for assistance with any order changes or cancellations.

Contact Customer Service at:
customerservice@form-furniture.com

Shipping & Delivery

Standard shipments are made via common carrier, unless otherwise specified. Standard deliveries are dock-to-dock and are scheduled to occur between Mon-Friday 8a-5p. Title to and risk of loss of the products shall pass to the customer upon delivery. FORM will attempt to accommodate basic shipping instructions (i.e. "call ahead" or "deliver before 12p) as long as that information is included on the order.

Products are thoughtfully inspected, secured, and packaged for shipment; however, FORM is not responsible for delays or failures of delivery when those failures are caused by matters beyond FORM's reasonable control, including by the carrier. If delivery issues are encountered, please contact FORM Customer Service immediately and our team will make every effort to assist in rectifying the issue.

TERMS AND CONDITIONS

Contact Customer Service at:
customerservice@form-furniture.com

Storage

FORM does not have capacity for storage of products for an extended period. Should a customer be unable to accept the receive the product as originally planned, contact FORM Customer Service and our team will make every effort to assist in helping resolve the issue. Any storage fees that are incurred will be the responsibility of the customer.

Contact Customer Service at:
customerservice@form-furniture.com

Freight Damage

FORM thoughtfully packages, secures, and ships all products, however, we understand that damage to cartons or products can occur during transit. If an order was received with freight damage (concealed or external), please follow these steps for an expedited resolution. FORM will, if notified within sixty (60) days from the date of shipment, as determined by FORM and as the customer's sole remedy and FORM's exclusive liability, repair, replace, or issue a credit for the purchase price of the damaged products.

If damage is visible:

- Accept the shipment and document freight damages on the freight bill
- Take pictures of the damage for claim submission
- Contact FORM Customer Service to report the issue immediately

If damage is concealed:

- Save the product, carton, and inner packaging
- Take pictures of the damage for claim submission
- Contact FORM Customer Service to report the issue within 60 days of delivery.

Contact Customer Service at:
customerservice@form-furniture.com

Returns and Refusals

Although FORM does not accept returns, it is important that all of our customers love their FORM Furniture as much as we do. If there is a need to return product, please contact FORM Customer Service.

If a customer needs to refuse a shipment for any reason, please contact FORM Customer Service immediately so we can assist in making appropriate arrangements for the shipment. Refused shipments will incur a 15% restocking fee + the cost of the return freight, billable to the original customer.

Contact Customer Service at:
customerservice@form-furniture.com

Warranty Coverage

FORM Furniture is committed to the complete satisfaction of our customers with our products and performance. If a problem arises with a FORM Furniture product, please contact our Customer Service team immediately and we will make every effort to rectify the situation.

The original end user of FORM Furniture's product is protected against defects of materials and workmanship for the following warranty periods:

Seating Components: 12 years
Laminate Tabletops: 5 years
Seating Textiles & Mesh: 5 years
Powder Coated Tabletops: 5 years
Handset for Height Adjustable Table Base: 5 years
Monitor Arms: 12 years
Height Adjustable Table Bases (not including handset): 10 years
Storage & Storage Accessories: 5 years

The warranty does not cover damage from ordinary wear and tear, or damage resulting from accident, alteration, misuse, abuse, tampering or negligence.

In the event that the customer notifies FORM prior to the expiration of the applicable warranty period and FORM determines that the applicable products fail to conform to the foregoing warranty, FORM will, at FORM's election and expense, and as the customer's sole remedy and FORM's exclusive liability, repair, replace or provide a refund of the purchase price of the nonconforming products.

If a problem arises with FORM product outside of the warranty period, contact our Customer Service team.

TERMS AND CONDITIONS

Disclaimer

EXCEPT AS EXPRESSLY SET FORTH ABOVE, FORM DISCLAIMS ALL OTHER WARRANTIES, WHETHER EXPRESS, STATUTORY OR IMPLIED, INCLUDING WITHOUT LIMITATION ANY WARRANTIES OF MERCHANTABILITY, NON-INFRINGEMENT OR FITNESS FOR A PARTICULAR PURPOSE, AND WARRANTIES ARISING FROM TRADE USAGE, COURSE OF DEALING, OR OTHERWISE.

Limitation of Liability

NOTWITHSTANDING ANYTHING TO THE CONTRARY HEREIN; (a) FORM SHALL NOT BE LIABLE FOR LOST PROFITS, REVENUE OR LOSSES DUE TO BUSINESS INTERRUPTIONS, OR ANY INDIRECT, INCIDENTAL, CONSEQUENTIAL, PUNITIVE OR OTHER SPECIAL DAMAGES, HOWEVER THE SAME MAY BE CAUSED, REGARDLESS OF THE FAULT, NEGLIGENCE (WHETHER SOLE, JOINT, CONCURRENT, ACTIVE OR PASSIVE OR OTHERWISE), PRE-EXISTING DEFECT OR STRICT LIABILITY, DIRECTLY OR INDIRECTLY ARISING OUT OF THE PRODUCTS OR THESE TERMS; AND (b) FORM'S ENTIRE LIABILITY, AND THE CUSTOMER'S EXCLUSIVE REMEDY, IN LAW AND EQUITY OR OTHERWISE, WITH RESPECT TO THE PRODUCTS OR THESE TERMS, IS SOLELY LIMITED TO THE AMOUNTS PAID BY THE CUSTOMER TO FORM FOR THE PRODUCTS TO WHICH THE APPLICABLE CLAIM RELATES.

Term and Termination

These Terms shall become effective upon FORM's acceptance of the customer's order and shall remain in force until all products under the applicable order have been delivered, unless earlier terminated as permitted herein. FORM may terminate the customer's order and these Terms immediately by written notice to the customer if the customer fails to pay any amounts when due and fails to cure such non-payment within ten (10) days of receipt of written notice thereof, or if the customer breaches these Terms and fails to cure such breach within thirty (30) days of receipt of written notice thereof.

Miscellaneous

In the exercise of their respective rights, and the performance of their respective obligations, under this Agreement, the parties are, and shall remain, independent contractors. Neither party shall bind, or attempt to bind, the other party hereto to any contract or the performance of any other obligation or represent to any third party that it is authorized to enter into any contract or binding obligation on behalf of the other party hereto. These Terms shall be governed by and construed in accordance with the laws of the State of Alabama, excluding any conflicts or choice of law rule or principle that might otherwise refer construction or interpretation of these Terms to the substantive law of another jurisdiction. Any legal suit, action or proceeding arising out of or related to this Agreement will be instituted exclusively in the federal or state courts serving Jefferson County, Alabama. The U.N. Convention on Contracts for the International Sale of Goods shall not apply to these Terms. The parties specifically waive any right to a jury trial regarding disputes related to these Terms. The customer may not assign the order or these Terms without the prior written consent of FORM. The order and these Terms may not be modified, amended, altered or supplemented except upon the execution and delivery of a written agreement executed by an authorized representative of each of the parties. If any provision of these Terms is held to be illegal, invalid or unenforceable under any applicable laws, such provision shall be fully severable, these Terms shall be construed and enforced as if such illegal, invalid or unenforceable provision had never comprised a part hereof, and the remaining provisions of these Terms shall remain in full force and effect and shall not be affected by the illegal, invalid or unenforceable provision or by its severance herefrom. No waiver by a party of the provisions hereof will be effective unless explicitly set forth in writing and signed by the party so waiving. No failure to exercise, or delay in exercising, any rights or remedies arising from these Terms will operate or be construed as a waiver thereof. No single or partial exercise of any right or remedy arising from these Terms will preclude any other or further exercise thereof or the exercise of any other right, remedy power or privilege. Provisions of these Terms which by their nature should apply beyond their terms will remain in force after any termination or expiration, including without limitation the Sections entitled Warranty Coverage, Disclaimer, Limitation of Liability and Miscellaneous.

Form. When You Work. Where You Work. How You Work.

formfurniture

WWW.FORM-FURNITURE.COM