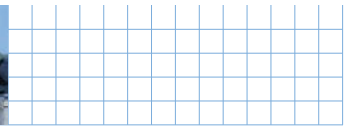


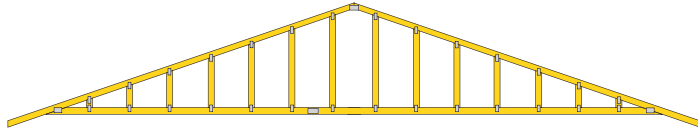
Framing With Trusses: Roofs



Gable Framing

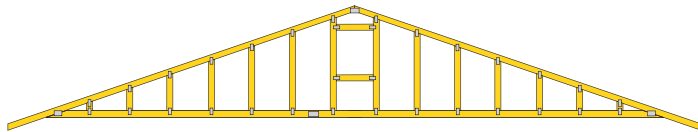
Gable ends when not configured in triangles as a truss, are more related to stud walls. However, they are structural elements and are analyzed to resist wind and seismic loads as noted on the truss design. The web design or framing pattern is determined by the

type of siding, either horizontal or vertical, and the need for a louver in the end of the building. The type of gable required is controlled by the end overhang and the need to match a soffit line.

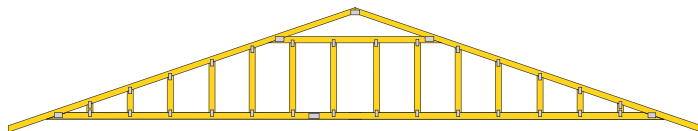


Standard Gable

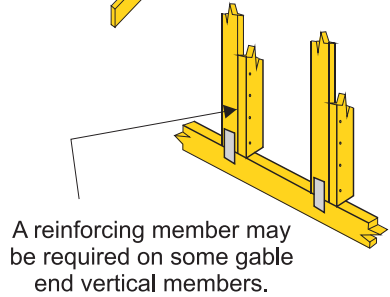
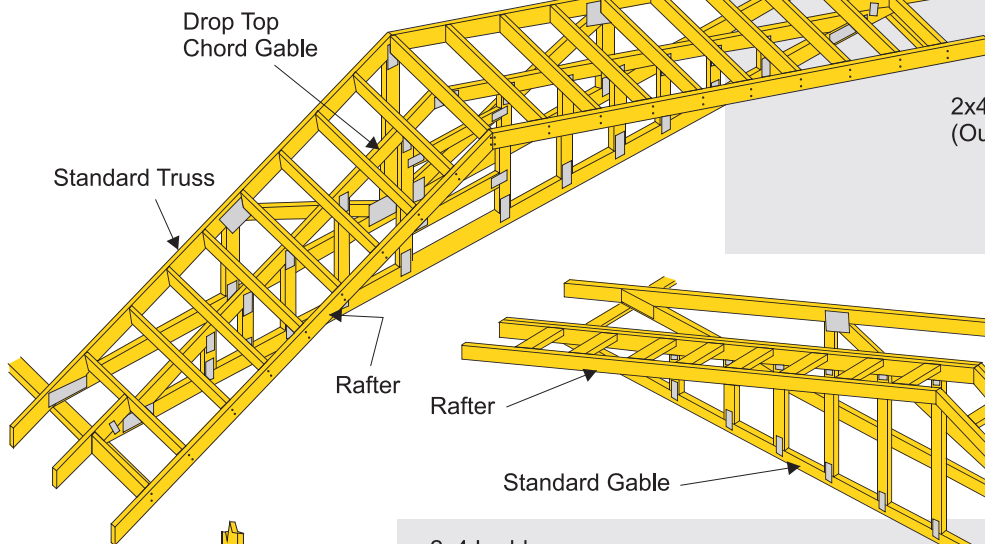
Stud spacing as necessary to support siding.



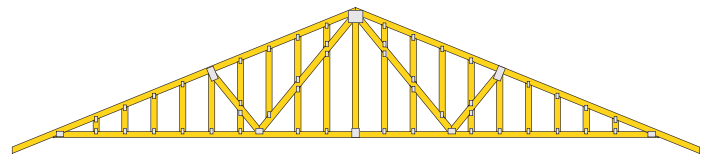
Standard Gable Framed For Rectangular Louver



Standard Gable Framed For Triangular Louver

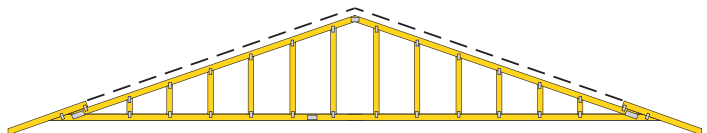


A reinforcing member may be required on some gable end vertical members.



Clearspan Gable

Used when the gable wall does not provide continuous bearing support for the gable framing.



Dropped Top Chord Gable

Illustrated with studs. Also available with framing for rectangular, square or triangular louver.

