

JOB NAME:	CONTRACTOR:
JOB LOCATION:	APPROVAL:
ENGINEER:	CONTRACTOR'S P.O.:
APPROVAL:	REPRESENTATIVE:



NMR1-C*

4-WAY CONDUIT CONNECTION

- 4-way single solenoid NAMUR valve
- Cv=1.68
- Ports 1/4" NPT
- Duty cycle 100% continuous
- Pressure range 20 to 120 PSIG
- Temperature range 35°F to 130°F (normal)
- Temperature range 0°F to 130°F (with dry media)

MODEL	VOLTAGE	INRUSH	POWER CONSUMPTION
NMR1-C1	110VAC	62 mA	3.5w
NMR1-C2	24VDC	105 mA	3.5w
NMR1-C12	12VDC	204 mA	3.5w
NMR1-C22	220VAC	31 mA	3.5w
NMR1-C24	24VAC	See*	3.5w

*Consult Factory

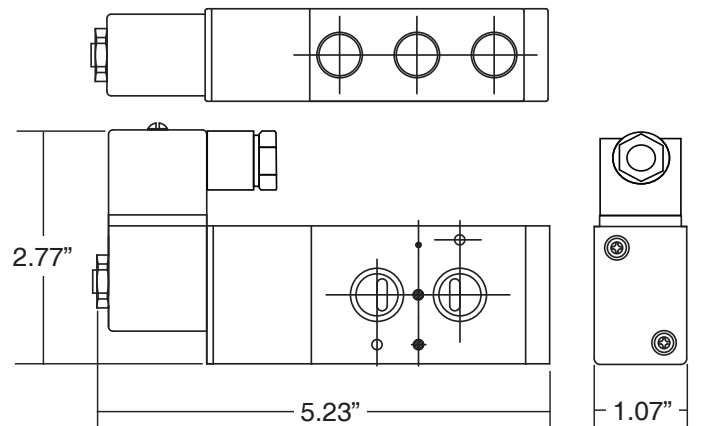
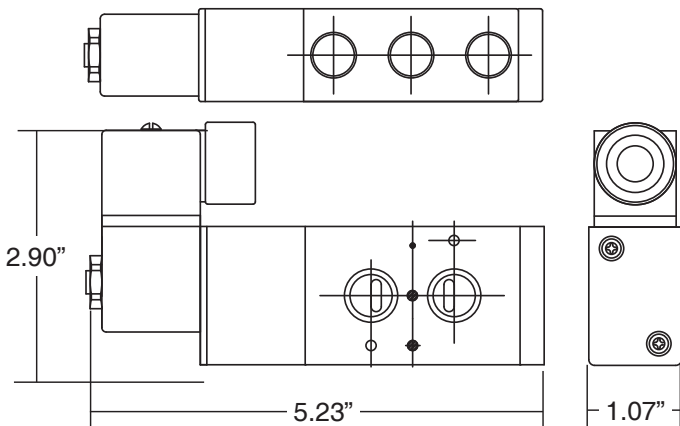
NMR1-D*

4-WAY DIN CONNECTION

- 4-way single solenoid NAMUR valve
- Cv=1.68
- Ports 1/4" NPT
- Duty cycle 100% continuous
- Pressure range 20 to 120 PSIG
- Temperature range 35°F to 130°F (normal)
- Temperature range 0°F to 130°F (with dry media)

MODEL	VOLTAGE	INRUSH	POWER CONSUMPTION
NMR1-D1	110VAC	62 mA	3.5w
NMR1-D2	24VDC	105 mA	3.5w
NMR1-D12	12VDC	204 mA	3.5w
NMR1-D22	220VAC	31 mA	3.5w
NMR1-D24	24VAC	See*	3.5w

*Consult Factory



NMR1 SERIES IOM

This following instructions demonstrate the proper 5/2 4-Way NAMUR Solenoid Valve Installation.

FIGURE 1



FIGURE 2

