

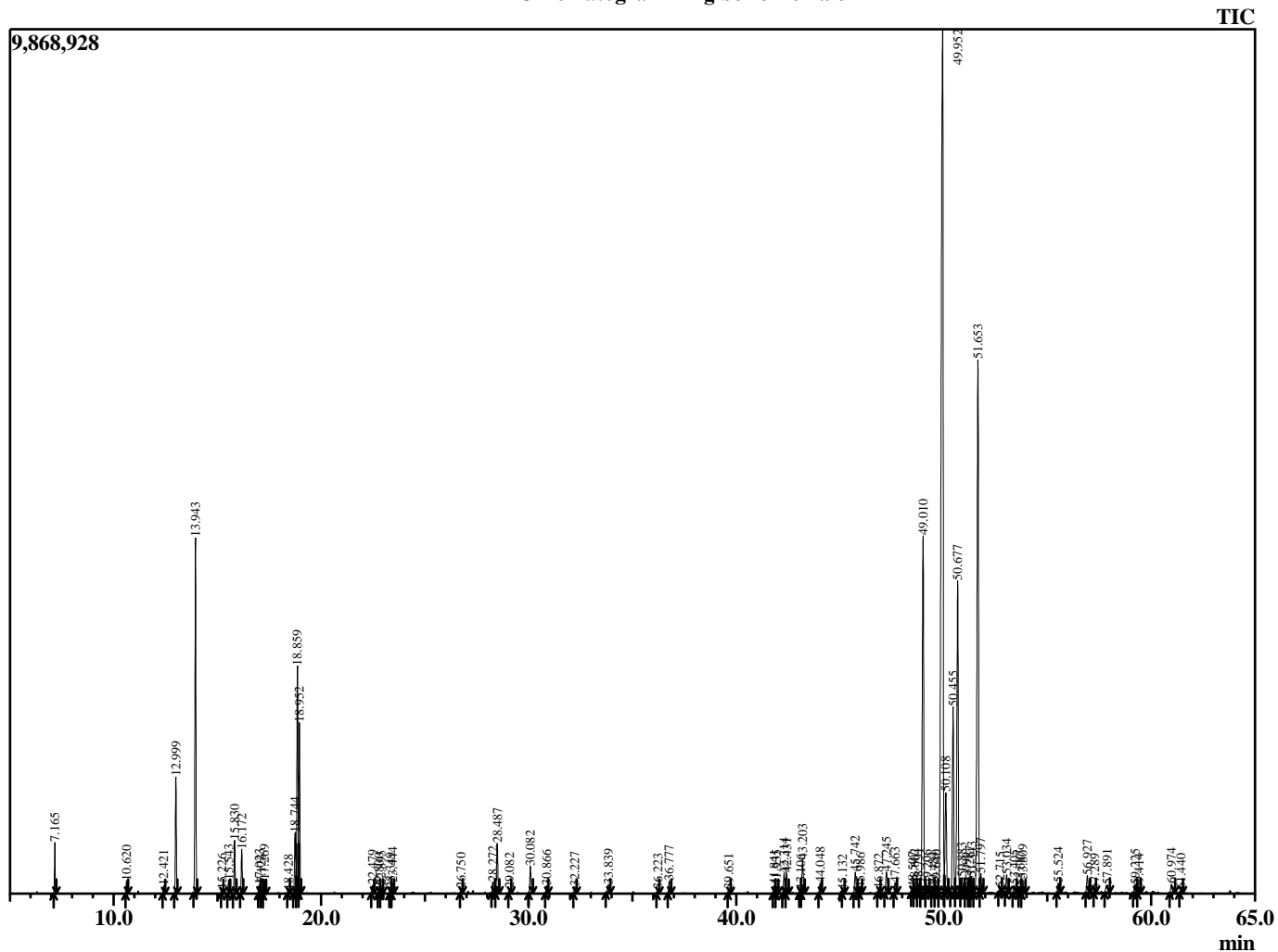
### Sample Information

**Analyzed by** : T. Wortham  
**Analyzed** : 6/17/2017 12:31:27 AM  
**Sample Type** : Essential Oil  
**Sample Name** : Ginger  
**Injection Volume** : 0.20  
**Lot Number** : 170515C  
**Instrument** : GC2

### Peak Report TIC

R.Time	Name	Area%
7.165	Hexanal	0.58
10.620	2-Heptanone	0.18
12.421	Tricyclene	0.13
12.999	alpha-Pinene	1.84
13.943	Camphene	5.98
15.226	Sabinene	0.06
15.543	beta-Pinene	0.22
15.830	6-Methyl hept-5-en-2-one	0.89
16.172	Myrcene	0.73
17.023	Octanal	0.15
17.123	Unidentified	0.06
17.269	alpha-Phellandrene	0.24
18.428	para-Cymene	0.05
18.744	Limonene	1.17
18.859	beta-Phellandrene	4.28
18.952	1,8-Cineole	3.00
22.479	Terpinolene	0.15
22.800	2-Nonanone	0.09
22.895	Rosefuran	0.14
23.349	Unidentified	0.09
23.444	Linalool	0.20
26.750	Camphor	0.09
28.272	Isoborneol	0.22
28.487	Borneol	1.02
29.082	Terpinen-4-ol	0.09
30.082	alpha-Terpineol	0.58
30.866	Decanal	0.16
32.227	Citronellol	0.13
33.839	Geraniol	0.21
36.223	Bornyl acetate	0.08
36.777	2-Undecanone	0.27
39.651	delta-Elementene	0.08
41.841	Isoledene	0.20
41.935	Unidentified	0.18
42.314	alpha-Copaene	0.46
42.431	Geranyl acetate	0.43
43.106	beta-Cubebene	0.06
43.203	beta-Elementene	0.78
44.048	Sesquithujene	0.22
45.132	beta-Caryophyllene	0.06
45.742	gamma-Elementene	0.50
45.986	trans-alpha-Bergamotene	0.11
46.872	Unidentified	0.08
47.245	trans-beta-Farnesene	0.54
47.663	Alloaromadendrene	0.24
48.507	Selina-4,11-diene	0.11
48.602	trans-Cadina-1(6),4-diene	0.21
48.791	gamma-Curcumene	0.21
49.010	Ar-Curcumene	8.78
49.206	beta-Chamigrene	0.23
49.484	beta-Selinene	0.12
49.640	cis,trans-alpha-Farnesene	0.20
49.952	alpha-Zingiberene	31.12
50.108	trans-Murrola-4(14),5-diene	2.51
50.455	trans,trans-alpha-Farnesene	4.21
50.677	beta-Bisabolene	7.48
50.883	gamma-Cadinene	0.38
51.099	Unidentified	0.12
51.267	delta-Cadinene	0.23
51.343	(-)-alpha-Panasinsen	0.36
51.653	beta-Sesquiphellandrene	13.61
51.797	trans-gamma-Bisabolene	0.40

### Chromatogram Zingiber officinale



R.Time	Name	Area%
52.715	Unidentified	0.10
53.034	Elemol	0.38
53.405	cis-Sesquisabinene hydrate	0.17
53.687	Germacrene B	0.15
53.809	trans-Nerolidol	0.32
55.524	trans-Sesquisabinene hydrate	0.21
56.927	Zingiberenol	0.40
57.289	Unidentified	0.07
57.891	Unidentified	0.29
59.225	alpha-Eudesmol	0.23
59.414	Unidentified	0.08
60.974	11-alpha-H-Himachal-4-en-1-beta-ol	0.24
61.440	2-cis,6-cis-Farnesol	0.08
		100.00