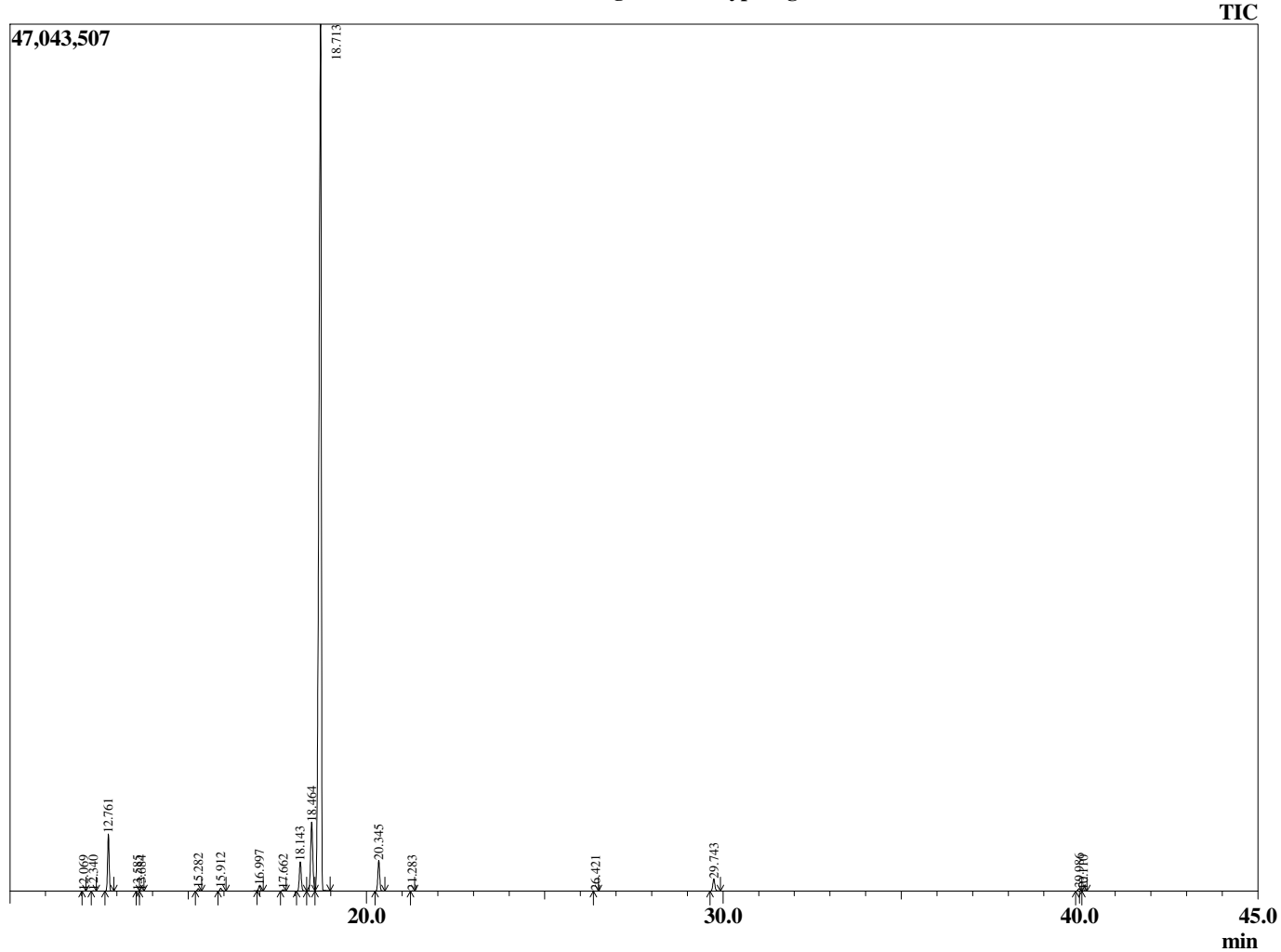


Sample Information

Analyzed by : T. Wortham
 Analyzed : 11/29/2017 6:06:23 AM
 Sample Type : Essential Oil
 Sample Name : Eucalyptus
 Injection Volume : 0.10
 Lot Number : A1128B
 Instrument ID : GC-3

Chromatogram Eucalyptus globulus



Peak Report TIC

R.Time	Name	Area%
12.069	Hashishene	0.01
12.340	alpha-Thujene	0.02
12.761	alpha-Pinene	3.60
13.585	alpha-Fenchene	0.00
13.684	Camphene	0.02
15.282	beta-Pinene	0.17
15.912	Myrcene	0.21
16.997	alpha-Phellandrene	0.38
17.662	alpha-Terpinene	0.10
18.143	para-Cymene	2.25
18.464	Limonene	6.09
18.713	1,8-Cineole	83.61
20.345	gamma-Terpinene	2.26
21.283	Pinol	0.01
26.421	Camphor	0.01
29.743	alpha-Terpineol	1.02
39.986	alpha-Terpinyl acetate	0.22
40.110	Unidentified	0.03
		100.00