

Triumph Tiger 900 Pre-Filter Installation Instructions

This installation is easy. Thorough instructions are provided for any skill level.

It is recommended you read all steps prior to installing. Step 6, air filter removal, is to allow your hand to help seat the cage assembly to the airbox. Ensure no debris is in the airbox prior to reinstalling the air filter.

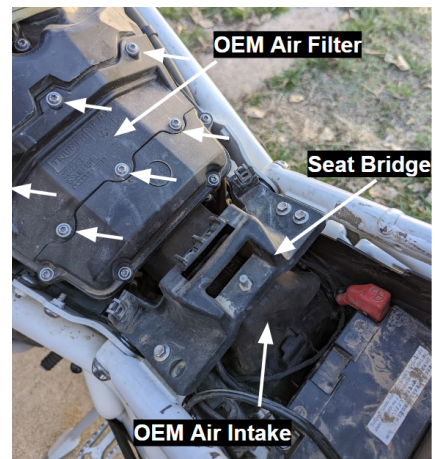
Components: Pre-filter Cage Assembly, Custom UNI Filter

Tools required: 5mm Allen Key; 8mm Socket; T-20 Torx bit; Plastic Flat Head (Optional); Tape or Sand Paper (Step 10)

- 1) Remove the passenger and rider seats
- 2) Fold back, or remove, the battery tray
- 3) Remove the side panels
 - a) Using a **5mm allen key**, remove the 4 bolts (2 per panel) holding the panels in place
 - b) Slide the panels off. **NOTE:** Do not pull the panels, they slide roughly 45 degrees up and toward the rear (See photo for directional arrow)
 - c) Set to the side to be reinstalled later
- 4) Remove seat bridge
 - a) Using an **8mm socket**, undo the 4 bolts of the seat bridge (Yes, that's what that thing is called apparently)
 - b) Set to the side to be reinstalled later
- 5) Remove OEM Air Intake
 - a) Using a **T-20 Torx bit**, remove the two black screws retaining the OEM Air Intake Duct
 - b) Gently pull the Intake Duct out from the airbox
 - c) Intake and Black Screws will no longer be needed

****When removing the air filter, ensure you do not allow debris to enter the air box.****

- 6) Remove the Air Filter
 - a) Using a **T-20 torx bit**, remove the 6 silver screws retaining the OEM Air Filter.
 - i) Retain to be installed later
 - b) Using a plastic flat head, or something similar, gently lift up the Air Filter Tray (See photo) to extract the air filter
 - i) Be cautious of the gasket under the top of the filter tray. This gasket remains glued to the air box, so be sure to pry on top of the gasket.
- 7) Install Pre-Filter Cage Assembly
 - a) Remove the filter from the cage assembly (If not done already)



- b) With the flat side down, install the cage assembly into the airbox.
 - i) Note that there is a small space between 2 flanges. The smaller flange should be inside the airbox.
 - ii) When working the assembly into place, it is recommended you seat the bottom seal first.
- c) Ensure the cage assembly is fully seated within the airbox



****Inspect the airbox to ensure there is no debris within, prior to reinstalling the air filter****

8) Reinstall the Air Filter

- a) Gently screw in the 6 silver screws with the T-20 Torx bit
 - i) The threads are plastic and can easily be damaged. Do not overtighten. Once it feels snug, STOP.

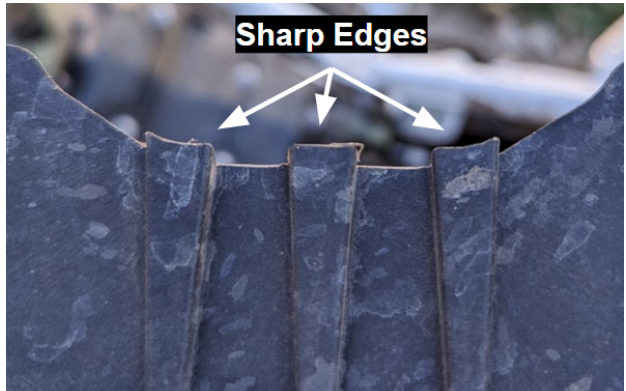
9) Install Pre-filter Filter

- a) It is recommended to test this prior to oiling the air filter, to understand how it slides on.
 - i) The filter is made from UNI Filter sheets. It is recommended that you use UNI filter Oil and Cleaners.
- b) Make sure the plastic end of the cage assembly is firmly seated.
- c) With the logo on top, slide the filter onto the cage assembly.
 - i) Focus on the bottom, to ensure it is fully seated. The top is obvious.
- d) Verify the filter is fully seated.



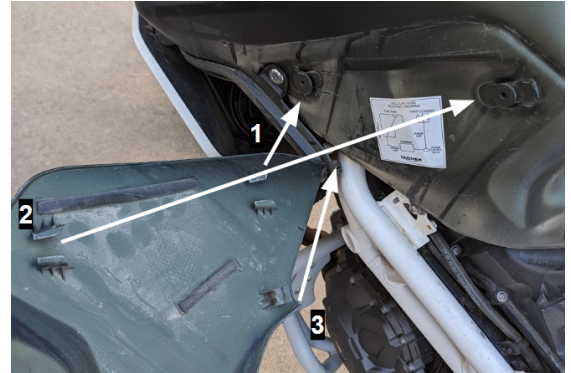
10) Modify / Install Seat Bridge

- a) The seat bridge has 3 sharp edges that can damage the filter. Either place a piece of thick tape over the edges or sand down the edges.
 - i) This will prolong the life of the filter.
 - ii) Sanding is the preferred option.
- b) Reinstall the bridge with the 8mm socket and 4 bolts, it will press into the filter a little. This helps keep the filter in place.



11) Install Side Panels

- a) The side panel should slide back into place in the reverse direction as removal. Make sure the 3 connection points (see photo) are connected to their respective area.
 - i) Point 1 and 2 are the main connections when sliding in place.
- b) Install the 4 bolts with the 5mm allen key.



12) Install Seats

When cleaning / maintaining the pre-filter, you will need to remove the side panels and seat bridge for access.

Thank you!
For any questions or further support, contact us at
Support@asphalt-and-beyond.com