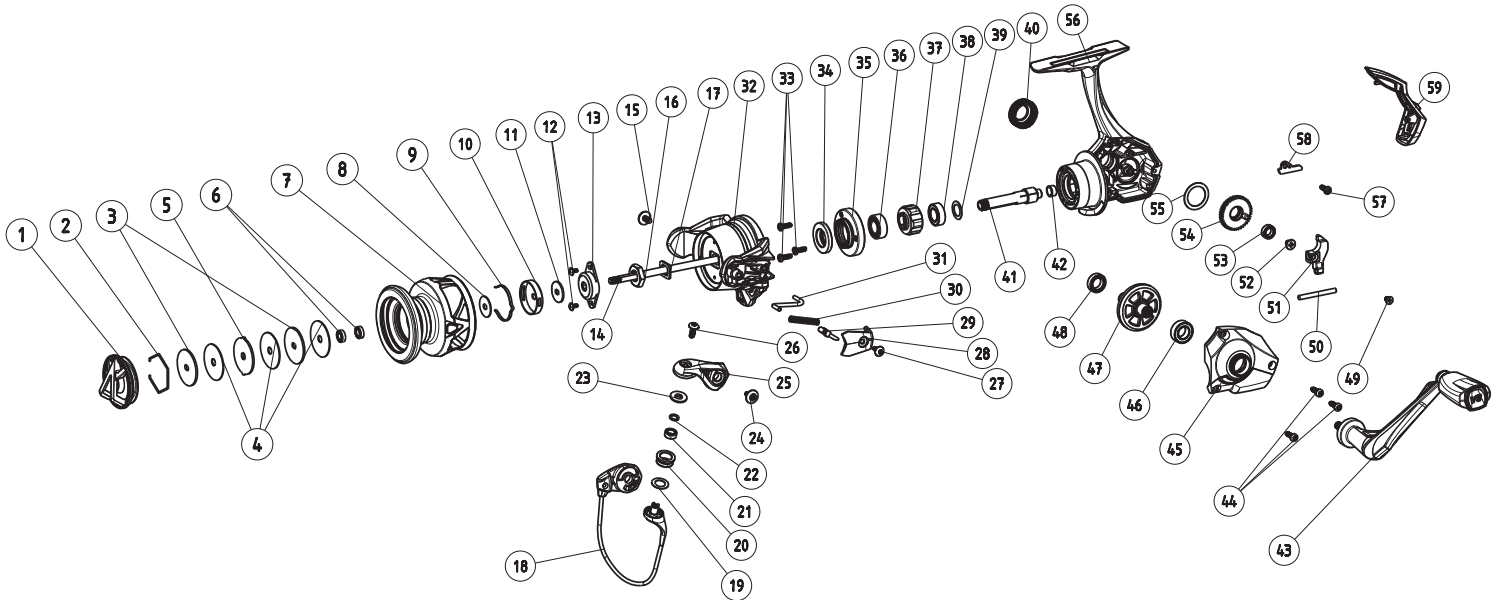


Key No.	Parts No.	Parts Name.	Key No.	Parts No.	Parts Name.
1		DRAG KNOB ASSEMBLY	30		KICK LEVER
2		DRAG WASHER RETAINER	31		ROTOR
3		WASHER	32		SCREW
4		DRAG WASHER	33		BODY PLATE (2)
5		BALL BEARING	34		BODY PLATE (1)
6		SPOOL	35		BALL BEARING
7		WASHER	36		ONE WAY CLUTCH
8		CLICK BUTTON SPRING	37		BALL BEARING
9		CLICK BUTTON	38		WASHER
10		WASHER	39		HANDLE SCREW CAP
11		SCREW	40		PINION GEAR
12		NUT RETAINER	41		HANDLE KNOB SLEEVE
13		MAIN SHAFT	42		HANDLE ASSEMBLY
14		SCREW	43		SCREW
15		ROTOR NUT	44		BODY COVER
16		WASHER	45		BALL BEARING
17		BAIL ASSEMBLY	46		DRIVE GEAR
18		WASHER	47		BALL BEARING
19		LINE ROLLER	48		SCREW
20		BALL BEARING	49		SLIDER PIN
21		WASHER	50		SLIDER
22		BUSHING	51		SCREW
23		SCREW	52		BALL BEARING
24		BAIL ARM	53		OSCILLATION GEAR
25		SCREW	54		WASHER
26		SCREW	55		BODY
27		ARM LEVER COVER	56		SCREW
28		KICK	57		SLIDER PLATE
29		SPRING	58		BODY REAR CAP



Key No.	Parts No.	Parts Name.	Key No.	Parts No.	Parts Name.
1		DRAG KNOB ASSEMBLY	31		KICK LEVER
2		DRAG WASHER RETAINER	32		ROTOR
3		WASHER	33		SCREW
4		DRAG WASHER	34		BODY PLATE (2)
5		EAR WASHER	35		BODY PLATE (1)
6		BALL BEARING	36		BALL BEARING
7		SPOOL	37		ONE WAY CLUTCH
8		WASHER	38		BALL BEARING
9		CLICK BUTTON SPRING	39		WASHER
10		CLICK BUTTON	40		HANDLE SCREW CAP
11		WASHER	41		PINION GEAR
12		SCREW	42		HANDLE KNOB SLEEVE
13		NUT RETAINER	43		HANDLE ASSEMBLY
14		MAIN SHAFT	44		SCREW
15		SCREW	45		BODY COVER
16		ROTOR NUT	46		BALL BEARING
17		WASHER	47		DRIVE GEAR
18		BAIL ASSEMBLY	48		BALL BEARING
19		WASHER	49		SCREW
20		LINE ROLLER	50		SLIDER PIN
21		BALL BEARING	51		SLIDER
22		WASHER	52		SCREW
23		BUSHING	53		BALL BEARING
24		SCREW	54		OSCILLATION GEAR
25		BAIL ARM	55		WASHER
26		SCREW	56		BODY
27		SCREW	57		SCREW
28		ARM LEVER COVER	58		SLIDER PLATE
29		KICK	59		BODY REAR CAP
30		SPRING			