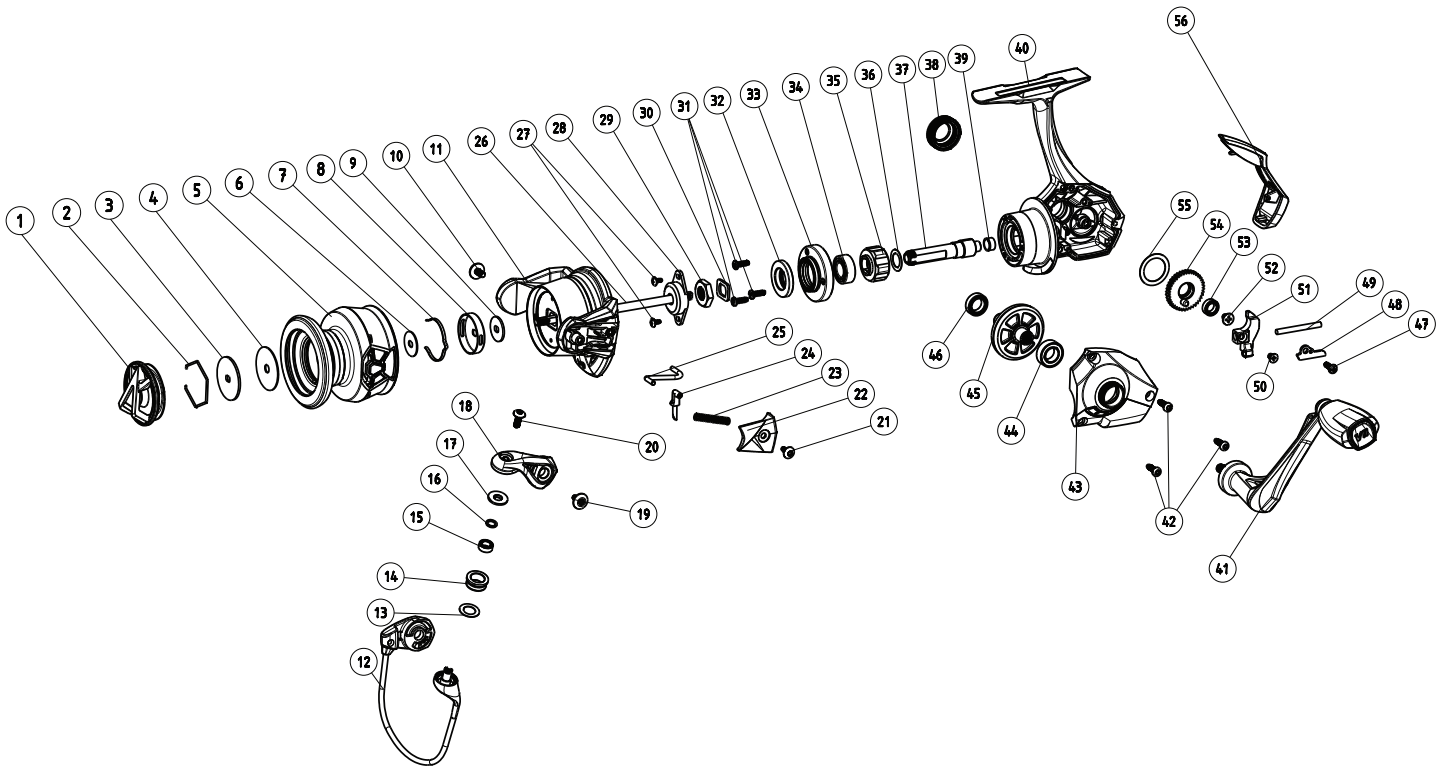


Key No.	Parts No.	Parts Name.	Key No.	Parts No.	Parts Name.
1		DRAG KNOB ASSEMBLY	30		KICK LEVER
2		DRAG WASHER RETAINER	31		ROTOR
3		WASHER	32		SCREW
4		DRAG WASHER	33		BODY PLATE (2)
5		EAR WASHER	34		BODY PLATE (1)
6		SPOOL	35		BALL BEARING
7		WASHER	36		ONE WAY CLUTCH
8		CLICK BUTTON SPRING	37		WASHER
9		CLICK BUTTON	38		PINION GEAR
10		WASHER	39		HANDLE SCREW CAP
11		SCREW	40		HANDLE KNOB SLEEVE
12		NUT RETAINER	41		BODY
13		MAIN SHAFT	42		HANDLE ASSEMBLY
14		ROTOR NUT	43		SCREW
15		SCREW	44		BODY COVER
16		WASHER	45		BALL BEARING
17		BAIL ASSEMBLY	46		DRIVE GEAR
18		WASHER	47		BALL BEARING
19		LINE ROLLER	48		SCREW
20		BALL BEARING	49		SLIDER PLATE
21		WASHER	50		SLIDER PIN
22		SCREW	51		SCREW
23		BUSHING	52		SLIDER
24		BAIL ARM	53		SCREW
25		SCREW	54		BALL BEARING
26		SCREW	55		OSCILLATION GEAR
27		ARM LEVER COVER	56		WASHER
28		SPRING	57		BODY REAR CAP
29		KICK			



Key No.	Parts No.	Parts Name.	Key No.	Parts No.	Parts Name.
1		DRAG KNOB ASSEMBLY	29		ROTOR NUT
2		DRAG WASHER RETAINER	30		WASHER
3		WASHER	31		SCREW
4		DRAG WASHER	32		BODY PLATE (2)
5		SPOOL	33		BODY PLATE (1)
6		WASHER	34		BALL BEARING
7		CLICK BUTTON SPRING	35		ONE WAY CLUTCH
8		CLICK BUTTON	36		WASHER
9		WASHER	37		PINION GEAR
10		SCREW	38		HANDLE SCREW CAP
11		ROTOR	39		HANDLE KNOB SLEEVE
12		BAIL ASSEMBLY	40		BODY
13		WASHER	41		HANDLE ASSEMBLY
14		LINE ROLLER	42		SCREW
15		BALL BEARING	43		BODY COVER
16		WASHER	44		BALL BEARING
17		BUSHING	45		DRIVE GEAR
18		BAIL ARM	46		BALL BEARING
19		SCREW	47		SCREW
20		SCREW	48		SLIDER PLATE
21		SCREW	49		SLIDER PIN
22		ARM LEVER COVER	50		SCREW
23		SPRING	51		SLIDER
24		KICK	52		SCREW
25		KICK LEVER	53		BALL BEARING
26		MAIN SHAFT	54		OSCILLATION GEAR
27		SCREW	55		WASHER
28		NUT RETAINER	56		BODY REAR CAP