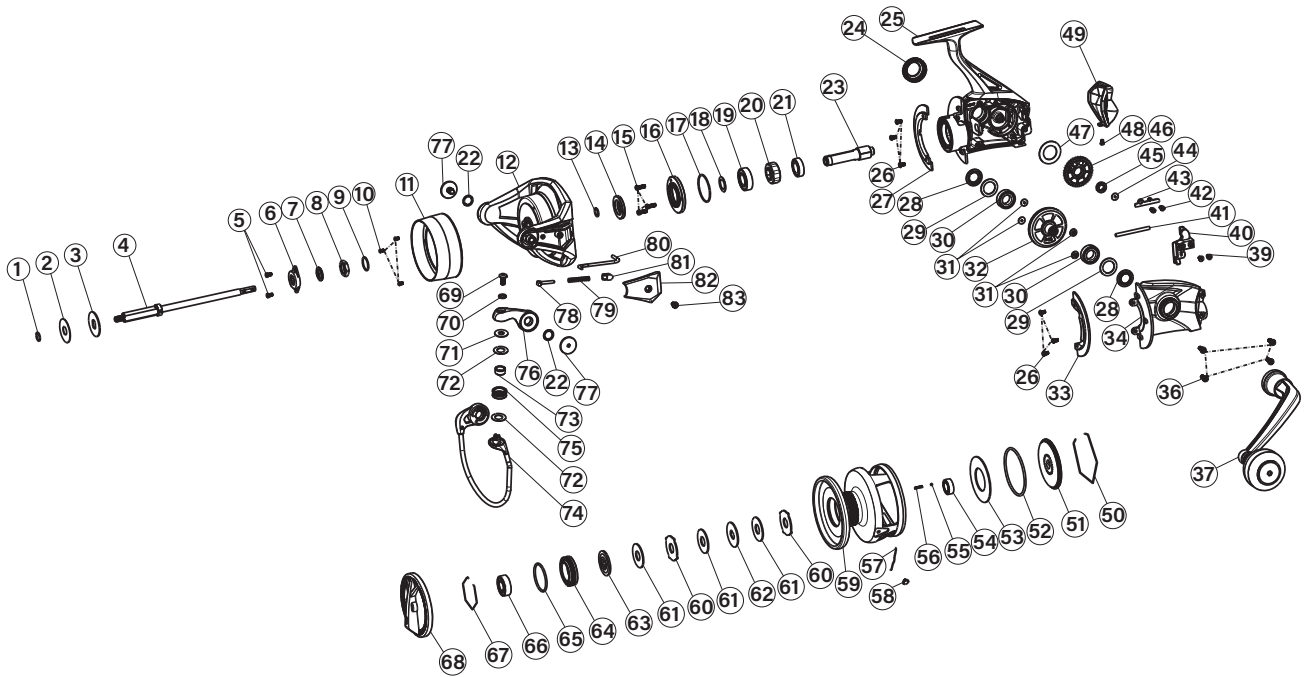
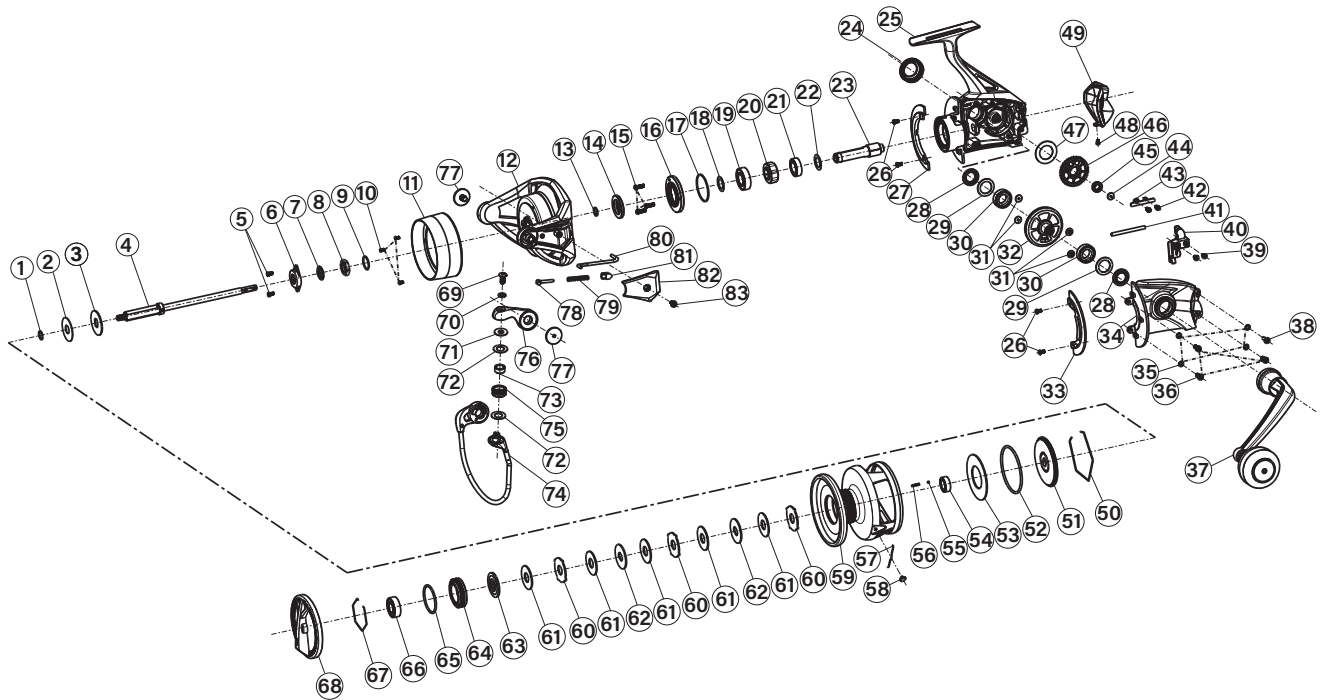


Key No.	Parts No.	Parts Name.	Key No.	Parts No.	Parts Name.
1		KNOB ASSEMBLY	37		BEARING
2		WASHER SPRING CLIP	38		BEARING COVER
3		BEARING	39		SHAFT ASSEMBLY
4		BEARING COVER	40		BODY CAP
5		BEARING CAP	41		SEAL
6		DRAG WASHER	42		SCREW
7		DRAG WASHER	43		BODY CAP
8		WASHER-EAR	44		BEARING
9		CLICK SPRING	45		ONE WAY CLUTCH
10		CLICK RETAINER	46		BEARING
11		SPOOL	47		ONE WAY WASHER
12		SCREW	48		PINION
13		ROD CLAMP NUT	49		BODY ASSEMBLY
14		SEAL	50		HANDLE COVER
15		ROD CLAMP KIT	51		FOOT
16		WASHER	52		SEAL
17		SCREW	53		SEAL
18		ROTOR CAP	54		BEARING
19		ROTOR	55		SCREW
20		PIVOT ARM	56		GEAR ASSEMBLY
21		LEVER TRIP	57		SIDE PLATE
22		BAIL ARM COVER	58		SIDE PLATE SCREW
23		SCREW	59		SCREW
24		BAIL ARM SCREW	60		HANDLE ASSEMBLY
25		LINE ROLLER SCREW	61		CROSSWIND BLOCK LEVER
26		BAIL ARM	62		CROSSWIND BLOCK SCREW
27		LINE ROLLER BUSHING	63		SCREW
28		WASHER	64		CROSSWIND BLOCK SHAFT
29		LINE ROLLER	65		CROSSWIND BLOCK
30		LINE ROLLER BUSHING	66		SCREW
31		WASHER	67		BUSHING
32		BAIL WIRE ASSEMBLY	68		GEAR CROSSWIND
33		BAIL WIRE LEVER	69		WASHER
34		SPRING BAIL	70		SEAL
35		DRAG WASHER	71		BODY CAP SCREW
36		DRAG WASHER	72		BODY CAP



Key No.	Parts No.	Parts Name.	Key No.	Parts No.	Parts Name.
1		O-RING	44		SCREW
2		DRAG WASHER	45		BUSHING
3		DRAG WASHER	46		GEAR CROSSWIND
4		SHAFT	47		WASHER
5		SCREW	48		SCREW
6		ROD CLAMP NUT	49		BODY CAP
7		SEAL	50		RETAINING RING
8		ROTOR NUT	51		SPOOL BRIDGE
9		O-RING	52		O-RING
10		SCREW	53		DRAG WASHER
11		ROTOR CAP	54		BEARING 9X15X5
12		ROTOR	55		STEEL BALL
13		O-RING	56		CLIP LINE SPRING
14		BODY CAP	57		SPRING
15		SCREW	58		CLIP LINE
16		BODY CAP	59		SPOOL
17		O-RING	60		WASHER-EAR
18		WASHER	61		DRAG WASHER
19		BEARING 10X22X6	62		DRAG WASHER
20		ONE WAY CLUTCH	63		DRAG WASHER
21		BEARING 10X18X5	64		BEARING CUP
22		WASHER	65		SEAL
23		PINION	66		BEARING 9X20X6
24		HANDLE COVER	67		RETAINING RING
25		BODY	68		KNOB ASSEMBLY
26		SCREW	69		LINE ROLLER SCREW
27		FRICTION RING	70		WASHER
28		SEAL	71		LINE ROLLER BUSHING
29		WASHER	72		LINE ROLLER WASHER
30		BEARING 10X18X5	73		LINE ROLLER BUSHING
31		SCREW	74		BAIL WIRE ASSEMBLY
32		GEAR ASSEMBLY	75		LINE ROLLER
33		FRICTION RING	76		BAIL ARM
34		SIDE PLATE	77		BAIL ARM SCREW
36		SIDE PLATE SCREW	78		PIVOT ARM
37		HANDLE ASSEMBLY	79		LINE ROLLER SPRING
39		CROSSWIND BLOCK SCREW	80		LEVER TRIP
40		CROSSWIND BLOCK	81		PIVOT ARM PLATE
41		CROSSWIND BLOCK LEVER	82		BAIL ARM COVER
42		SCREW	83		SCREW
43		CROSSWIND BLOCK SHAFT			



Key No.	Parts No.	Parts Name.	Key No.	Parts No.	Parts Name.
1		O-RING	43		CROSSWIND BLOCK SHAFT
2		DRAG WASHER	44		SCREW
3		DRAG WASHER	45		BUSHING
4		SHAFT	46		GEAR CROSSWIND
5		SCREW	47		WASHER
6		ROD CLAMP NUT	48		SCREW
7		SEAL	49		BODY CAP
8		ROTOR NUT	50		RETAINING RING
9		O-RING	51		SPOOL BRIDGE
10		SCREW	52		O-RING
11		ROTOR CAP	53		DRAG WASHER
12		ROTOR	54		BEARING 9X15X5
13		O-RING	55		STEEL BALL
14		BODY CAP	56		CLIP LINE SPRING
15		SCREW	57		SPRING
16		BODY CAP	58		CLIP LINE
17		O-RING	59		SPOOL
18		WASHER	60		WASHER-EAR
19		BEARING 10X22X6	61		DRAG WASHER
20		ONE WAY CLUTCH	62		DRAG WASHER
21		BEARING 10X18X5	63		DRAG WASHER
22		WASHER	64		BEARING CUP
23		PINION	65		SEAL
24		HANDLE COVER	66		BEARING 9X20X6
25		BODY	67		RETAINING RING
26		SCREW	68		KNOB ASSEMBLY
27		FRICTION RING	69		LINE ROLLER SCREW
28		SEAL	70		WASHER
29		WASHER	71		LINE ROLLER BUSHING
30		BEARING 10X18X5	72		LINE ROLLER WASHER
31		SCREW	73		LINE ROLLER BUSHING
32		GEAR ASSEMBLY	74		BAIL WIRE ASSEMBLY
33		FRICTION RING	75		LINE ROLLER
34		SIDE PLATE	76		BAIL ARM
35		WASHER	77		BAIL ARM SCREW
36		SIDE PLATE SCREW	78		PIVOT ARM
37		HANDLE ASSEMBLY	79		LINE ROLLER SPRING
38		SCREW M 3X8	80		LEVER TRIP
39		CROSSWIND BLOCK SCREW	81		PIVOT ARM PLATE
40		CROSSWIND BLOCK	82		BAIL ARM COVER
41		CROSSWIND BLOCK LEVER	83		SCREW
42		SCREW			