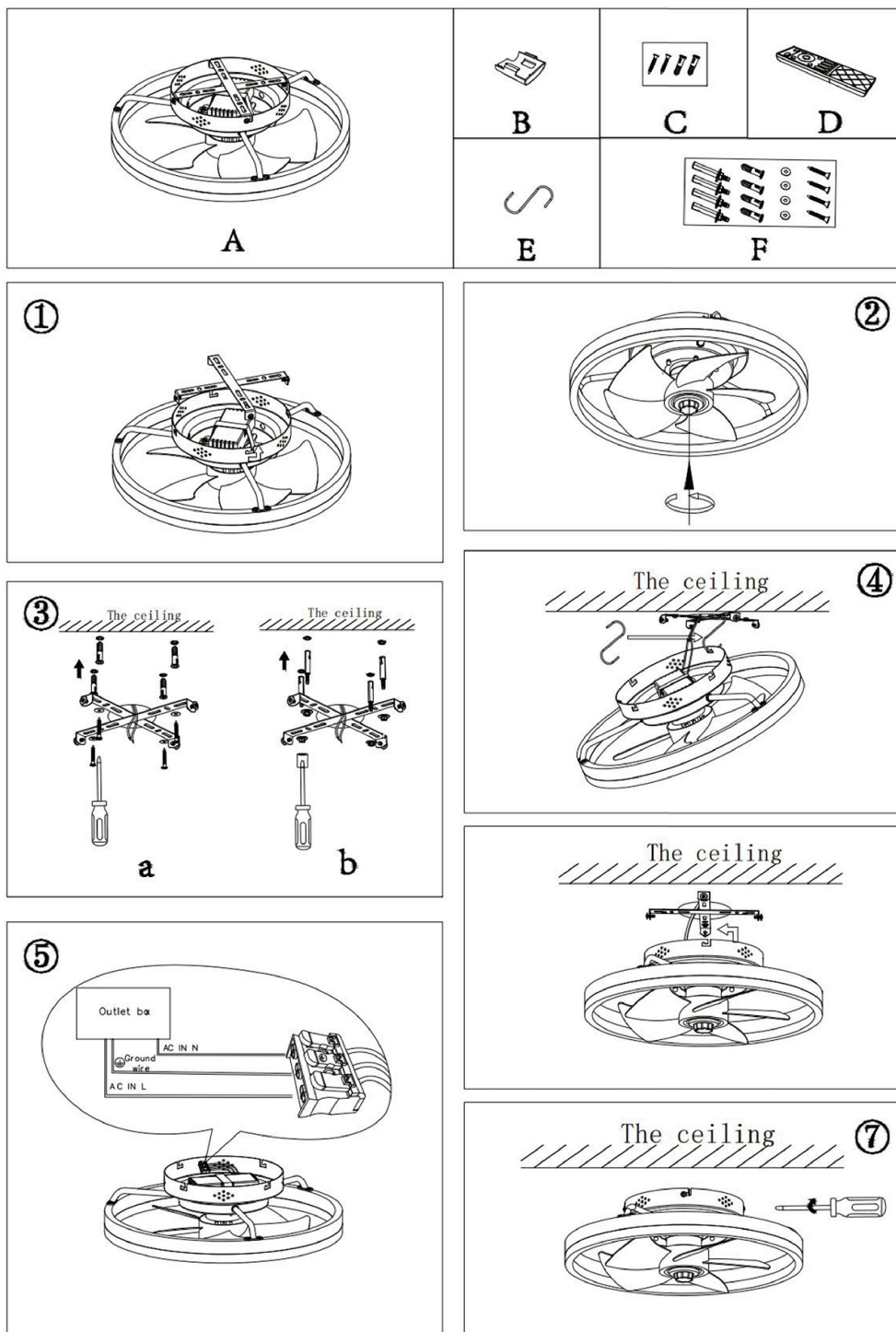


Installation Instructions

SKU:HCFL005

Dear user: Thank you for using this product. Please read the instructions carefully for installation.



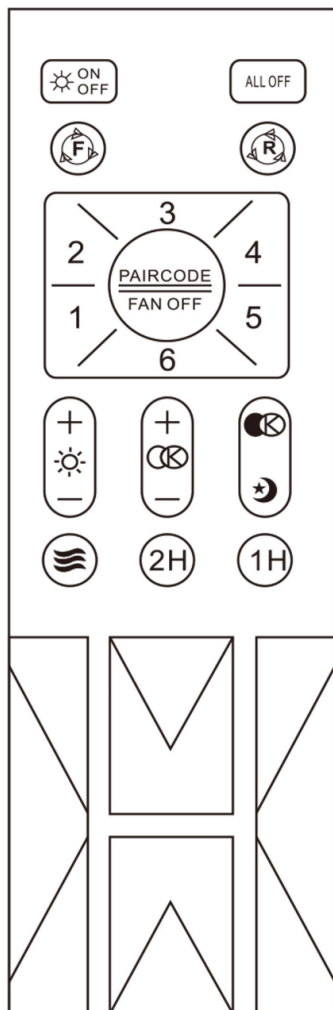
VAXLAMP

Installation Instructions

SKU:HCFL005

Dear user: Thank you for using this product. Please read the instructions carefully for installation.

Remote Control Instructions



Operations:

Pairing: Turn off the device for 1–2 seconds and turn it on. Then click the "Pairing" button. If the light flashes twice, that means the pairing is successfully done.

Multiple devices are able to be matched at the same time.

Code Clear: Within 5 seconds of turning on the device, keep pressing the "ALL OFF" button. If the light flashes twice, that means the action is successful.

Match Code Remote Code Matching: Keep pressing the "PAIR CODE" button within 5 seconds when the light is turned on. If the light flashes twice, that means the code is successfully matched.



Light On/Off



All Off



Color Temperature Switch



Night Light



Click or keep pressing this button to increase the brightness



Click or keep pressing this button to reduce the brightness



Keep pressing this button to increase the color temperature



Keep pressing this button to decrease the color temperature



Fan rotates clockwise



Fan rotates in reverse



Turn off automatically after 2-hour countdown



Turn off automatically after 1-hour countdown



Fan speed, 1 is the weakest, 6 is the strongest



Nature wind



Fan Off