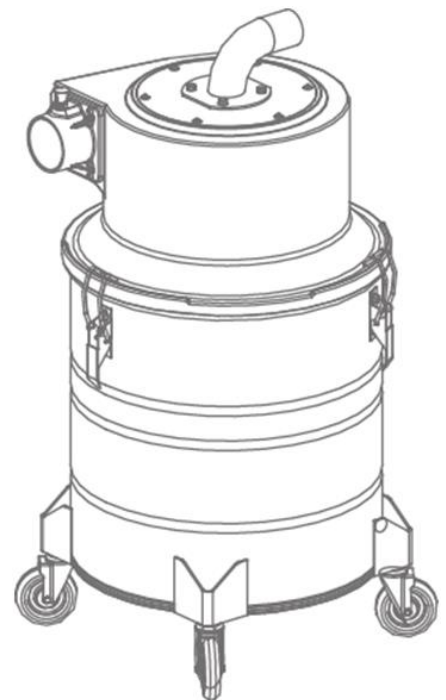


° Â» ¼ÐÒ×ØÔâ ¨Ä°

## Pre-Separator

## Operation Manual



## **INTRODUCTION**

Thank you for choosing the ASL Pre-Separator, a high-quality product based on the newest state-of-the-art technology. We hope that this device will be to your satisfaction and meet your expectations.

## **NOTICE!**

1. These instructions are for the ASL stand alone pre-separator only.
2. The pre separator is intended for pre-separating dry, non combustible dust. The pre-separator must be attached to a vacuum cleaner with the correct capacity. When the vacuum cleaner is activated, the dust-laden air is then sucked through the inlet valve at high speed via the suction hose. The air is slowed down by the cyclone and coarse dust particles are separated out, partially by centrifugal force and partially by gravity. Air and finer particles are then lifted up through the tank and through the hoses attached to the vacuum cleaner. The separated dust accumulates in the cyclone until the vacuum cleaner is switched off, causing it to drop to the bottom of the tank.
3. Please pay particular attention to the safety regulations and safety instructions.
4. Read the complete instruction manual before using.
5. All spare parts and accessories used with this device must be those specified by ASL Machines USA.

### **Environmental protection**

The packaging material can be recycled. Please do not dispose the packaging material into household waste; please recycle only.

Used devices contain valuable materials that can be recycled. Batteries, oil, and similar substances must not be dispersed into the environment. Please dispose of your used devices using the appropriate collection protocol.

# 1. SAFETY INSTRUCTIONS

When using an electrical appliance, basic precautions should always be followed, including the following:

## **WARNING - To reduce the risk of fire, electric shock or injury:**

- Cords damaged through crushing or splitting can be dangerous if used and should be replaced immediately.
- Make sure the assembly area is stable and on a flat surface, so the vacuum does not tip over.
- There is a risk of pinching when handling the toggle fasteners.
- This machine must not be used in environments where explosive gases may be present. Serious risk of explosion.
- Improper connection of the equipment/grounding conductor can result in a risk of electrical shock. Check with a qualified electrician or service person if you are in doubt as to whether or not the outlet is properly grounded. Do not modify the plug provided with the machine. If it will not fit the outlet, have a proper outlet installed by a qualified electrician.
- Before using the machine, make sure that the power & voltage corresponds with the voltage shown on the machine label.
- Do not leave machine unattended while plugged in. Unplug cord from outlet when not in use and before cleaning or servicing machine.
- Do not use outdoors or on a wet surface, this machine is for indoor and dry use only.
- Do not allow anyone to use as a toy. Close attention is required when being used around children.
- Use only as described in this manual. Use only manufacturer-recommended attachments.
- Operators should be adequately instructed on the use of this machine.
- This machine is not intended for use by persons (including children) with physical or mental disabilities, or lack of experience and knowledge.
- Do not use with damaged cord or plug, if the machine is not working as it should, has been dropped, damaged, left outdoors or dropped in water.
- Do not pull or carry by the cord, use the cord as a handle, close a door on the cord, or pull the cord around sharp edges or corners. Do not run the machine over the cord. Keep the cord away from heated surfaces.
- Do not unplug the machine by pulling on the cord. To unplug, grasp the plug. Not the cord.
- Do not handle the plug or machine with wet hands.
- Regularly inspect the cord and plug for damage. If the cord is damaged, it must be replaced by a qualified person in order to avoid risk of injury.
- Do not put any object into the openings. Do not use this machine with any openings blocked (except during filter cleaning procedure). Keep free of dust, hair and anything that may reduce airflow.
- Keep hair, loose clothing, fingers and all parts of the body away from openings and moving parts.
- Turn off all controls before unplugging.
- Do not use this machine to pick up flammable or combustible liquids, such as gasoline, or use in areas where these things may be present.
- Do not pick up any type of liquids.
- Do not pick up anything that is burning or smoking, such as cigarettes, matches or hot ashes.
- Use extra care when cleaning on stairs.
- Do not use without a dust bag and/or filters in place. Replace the collection system and/or filters as described in manual.
- If using an extension cord make sure the cord rating is suitable for this machine.
- Do not modify the machine from its original design.
- Keep children and unauthorized persons away from machine when in use.
- All repairs must be performed by a qualified service person. Use only manufacturer-supplied or equivalent replacement parts.
- Do not expose machine to rain or moisture. Store indoors only.
- Connect to a properly grounded outlet only. See grounding instructions.

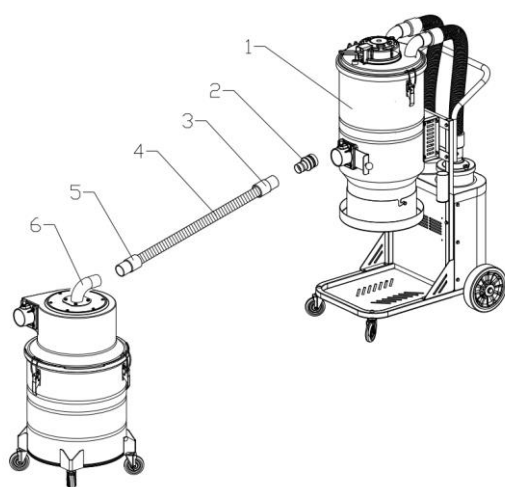
## 2.UNPACKING

When unpacking the machine, please check that the following accessories are included:

- ✓ D50 hose \*1Meter
- ✓ D50 hose ends\*2PCS
- ✓ D70/50 reducer

If any of the above-mentioned parts are missing, please contact your local distributor or ASL Machines USA. For models that do not already have the front casters assembled due to packaging limitations, assemble the front casters using the using bolt or nut and washer that are included in the package depending on your application.

### How to connect the Pre-Separator to vacuum cleaner:



- 1.Vacuum
- 2.D70/50 reducer
- 3.D50 hose cuff
- 4 . D50 hose
5. Connect the hose and separator outlet via a D50 hose cuff
6. Separator outlet(50mm)



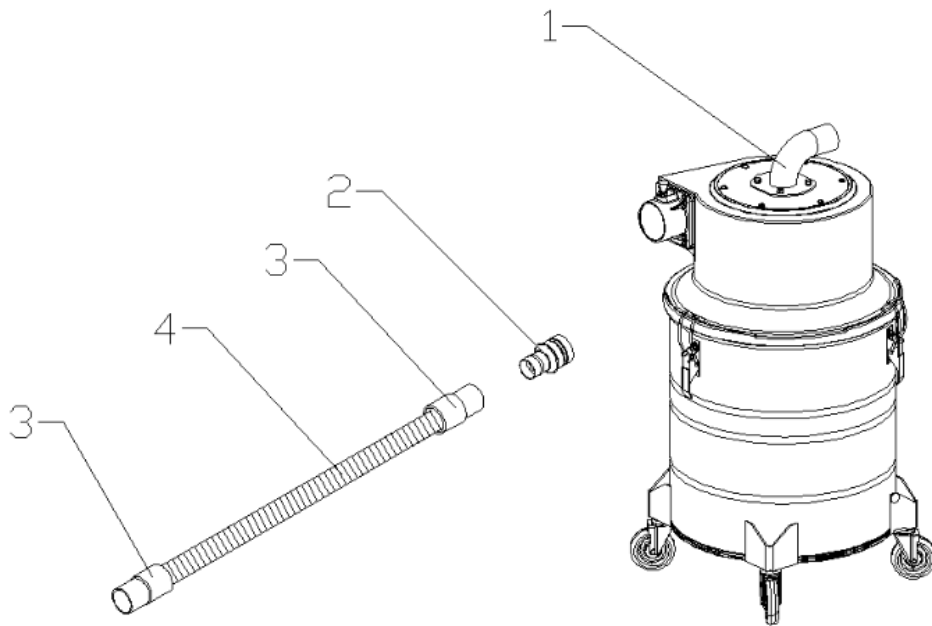
Notice!!!

ASL Machines USA offers 3 outlet diameters:  
50mm/63mm/76mm,

Please contact the local distributor for more info.

### 3. Pre-Separator

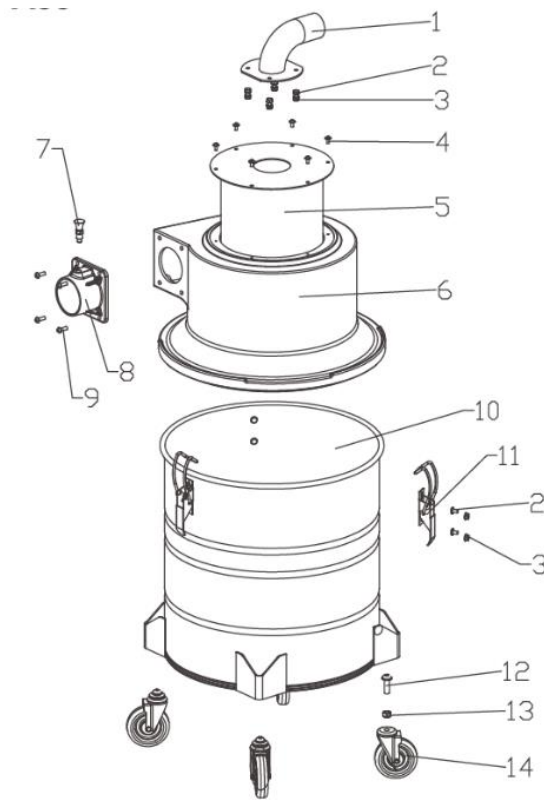
Packing list



S/N	P/N	Description	Quantity	Dimension
1		ASL Pre-separator	1 PC	
2	C2031	D70/50 reducer	1 PC	
3	S8006	D50 hose cuff	2 PCS	D50
4	S8007	D50 EVA hose	1 METER	D50*100cm

## 4. Pre-Separator

### Packing List



S/N	P/N	Description	Quantity	Dimension
1	C2172	D50 round flanged bend	1	
2	S0010	Hexagon bolt with pad for non-slip	7	M6*12
3	S0011	Hexagon nut with pad for non-slip	7	M6
4	S0047	Large flat head cross self tapping screw	6	M5*15
5	C2017	Separator inner tank	1	
6	C3030	Top hat		
7	C2022	Index plunger	1	
8	C3021	70mm inlet	1	
9	S0022	Hexagon bolt with semicircular head	4	M6*20
10	C2017	Separator dustbin 60L	1	
11	S0059	Holder kit	3	
12	S0031	Hexagon bolt	4	M10*40
13	S0015	Locknut	4	M10
14	S9006	3' ' caster - X60	4	3' '