

## Rockford Chimney Supply: Gas Heating Appliance Chimney Liner Measurements Guide

If you're installing a chimney liner for a gas burning appliance such as a furnace or boiler, this guide will help you tremendously! We've narrowed in on all of the measurements you'll need to gather. With these measurements, you can put together a parts list on our website or send the measurements off to us and one of our Certified Technicians will send you a parts list! Just follow the guide below and let us know if you have any questions along the way - we're here to help.

One more thing to keep in mind before you move on to the guide - this particular guide is for a residential gas heating appliance such as a furnace or boiler masonry chimney liner installation. Like the picture to the left. If you are looking for a different installation setup, please give us a call and we'll be happy to help.

Once this form is completed, please email it to [emogan@rockfordchimneysupply.com](mailto:emogan@rockfordchimneysupply.com) or call us at 866-708-2446

### A. Heating Appliance Data Plate

A1: What is the BTU input for each appliance?

A2: What is the efficiency rating of the appliance? If you are unable to locate the efficiency rating, you can calculate the efficiency by dividing the BTU output by the BTU input.

A3: Is the appliance natural draft or fan assisted?

### B. Connector Pipe

B1: How many 90 degree elbows are in the connector pipe that connects the appliance TO the current chimney?

B2: How many 45 degree elbows are in the connector pipe that connect the appliance TO the chimney?

B3: What is the lateral/horizontal distance from the appliance to the side of the chimney?

B4: What is the diameter of the connector pipe that is connected to the chimney?

### C. Chimney

C1: What is the depth (or thickness) of the chimney thimble?

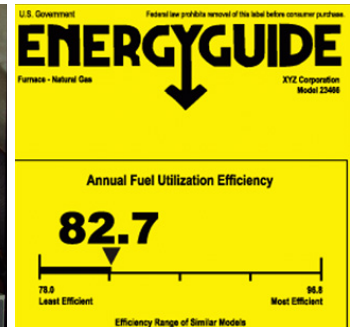
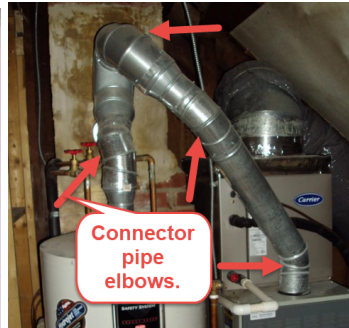
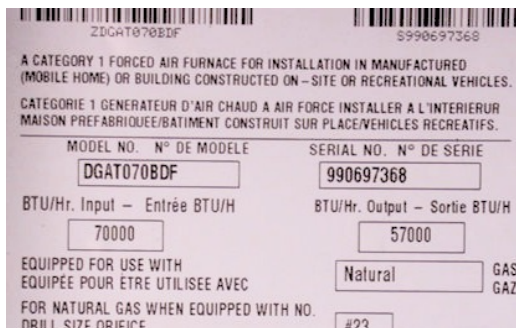
C2: Does the current chimney have a terra-cotta clay flue inside? If so, does the flue extend above the top of the chimney? If so, what are the exact outside dimensions of the clay flue?

C3: What are the exact inside measurements of the existing chimney flue?

C4: What is the height of the chimney from the thimble hole to the top of the chimney?

### D. Extra Notes

D1: Every installation is different and nothing is standard in the chimney world! Please provide any additional information about your setup here if needed.



**Note:** When ordering, please be sure to allow an extra 1-1/2" for overlap wherever liner sections will be joined together.

\*IRC, NFP 211, building codes, and local jurisdiction codes are ever changing. It is the installer's responsibility to be sure they are installing their components properly. Any questions about our products can be phoned in to one of our Certified Technicians.\*