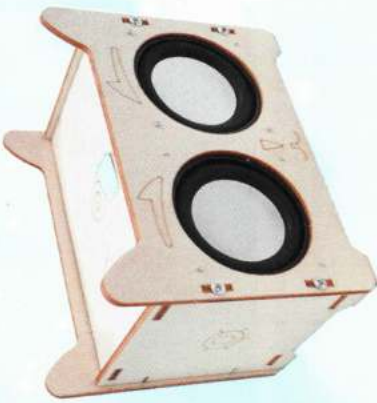


Bluetooth Speaker



Introduction to Bluetooth speakers

Bluetooth speakers transmit data through Bluetooth technology. The data here refers to music or audio files. The data is processed by the Bluetooth circuit board and the speakers of the speaker play wonderful music. Bluetooth technology has covered most of the current smart phones. Bluetooth technology has become a data transmission technology recognized by global mobile phone manufacturers.

Bluetooth technology is an open global specification for wireless data and voice communication. It is a special short-range wireless technology connection based on a low-cost short-range wireless connection that establishes a communication environment for fixed and mobile devices.



Prepare small production materials

You need to prepare a small screwdriver, a lighter and two pairs of AA batteries. During the production process, you need to use a screwdriver to install the screws. You need to use a lighter to remove the wire skin and bake the heat shrinkable tube. After the production is completed, you need to use the battery to make the model, normal work.



Precautions

- Hello kids! Please be careful when opening the material package to avoid sudden loss of small materials. Loss of small materials may cause your small production to fail!
- Children, please don't assemble small productions separately, making them alone may be dangerous. You must make them with the company of your parents or teachers!
- If you want to easily make a small production model, you need to read the instructions carefully and follow the steps to make it. If you don't understand, you can ask your parents or teachers. Asking for help from others is also a kind of learning!

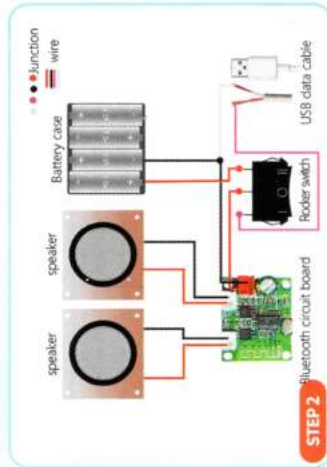


Do it with me



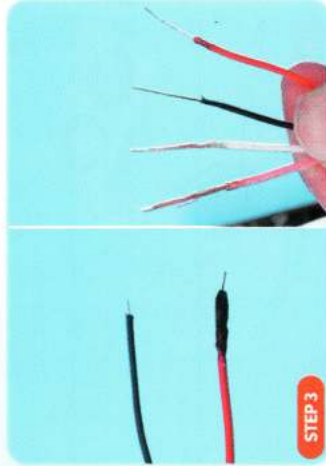
STEP 1

- Prepare small production materials.



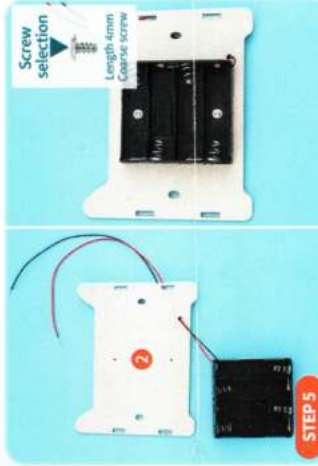
STEP 2

- Circuit wiring reference diagram



STEP 3

- Use a lighter to peel the wires of the USB data cable and the battery box. Wire stripping method: Use a lighter to burn the wire for 2 seconds, then quickly remove the burnt wire skin by hand, and reserve 1-2cm wire core. Reminders: Children must be careful not to get burned when using a lighter. You can also ask parents to help make this step.



STEP 5

- First, pass the wire of the battery box through the wire hole on the rear plate of No. ②, and then install the battery box on the rear plate of No. ② with 4mm coarse-grained screws.



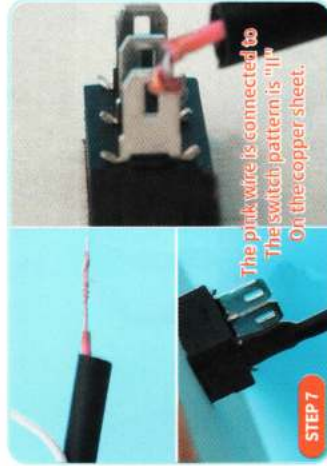
STEP 4

- Install the rocker switch on the top plate of No. ①. Installation method: Put the patterned side of the top plate of No. ① upwards, and then align the rocker switch with the switch groove of the top plate of No. ① and press it down gently (finger force from light to heavy to prevent damage caused by excessive force), rocker switch. The bayonet on both sides will automatically jam the switch slot on the top plate of No. ①.



STEP 6

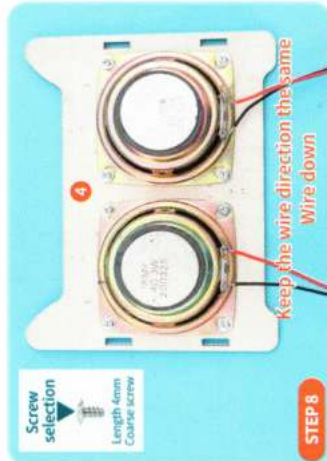
- Pass the USB data cable through the wire hole on the side plate ③. Note: Insert the USB data cable through the hole on the patterned side of the ③ board.



STEP 7

The pink wire is connected to the switch pattern is "II" on the copper sheet.

- First put a heat shrinkable tube on the pink wire of the USB data cable, then connect the metal core of the pink wire of the USB data cable to the metal piece of "II" corresponding to the rocker switch pattern, and finally cover the heat shrinkable tube on the core And the connection point of the metal sheet.



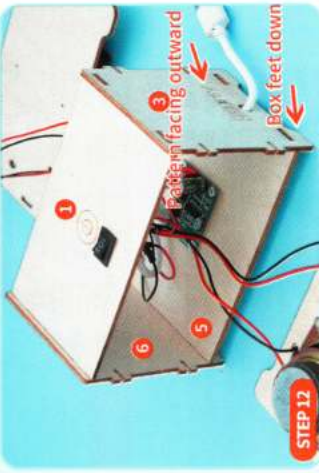
STEP 8

- Use 4mm coarse-grained screws to fix the speaker on the front panel of No. ④. Note: The screws are installed on the side of the plate ④ without a pattern. Check whether the speaker fits in the center of the two circles of the plate ④.



STEP 9

● Use 7mm coarse-grained screws to install the Bluetooth circuit board on the base plate No. ⑤. Note: The Bluetooth circuit board is the core of the entire Bluetooth speaker. When installing the screws, please tighten the screws as much as possible, and do not damage the electronic components at the bottom of the circuit board.



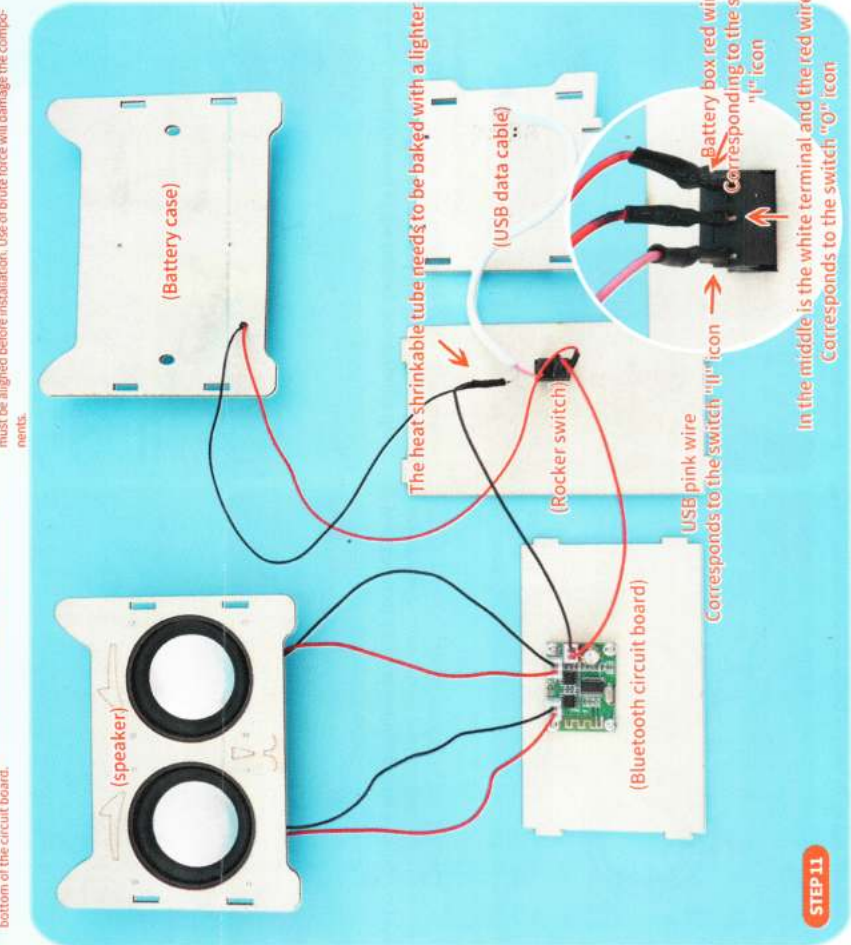
STEP 12

● Refer to the figure above to assemble the No. ① top plate, No. ⑤ bottom plate, No. ③ and No. ⑥ side plates. Note: The patterned side of all boards faces the outside, and the box feet are uniformly facing down.



STEP 13

● First arrange the wires into the box, and then install the No. ④ front plate on the No. ③ and No. ⑥ side plates with 7mm coarse-grained screws. Note: The foot of the box is facing down.



STEP 10

● As shown in the figure above: refer to the STEP2 circuit wiring reference diagram, first put the heat shrink tube on the red wire of the battery box and the white terminal wire, connect the metal core of the rocker switch, and cover it with the heat shrink tube. And then twist the white wire of the USB and the black wire of the white terminal wire and the black wire core of the battery box together, cover it with a heat shrinkable tube and bake it to shrink it.



STEP 14

● Install the No. ② rear plate on the No. ③ and No. ⑥ side plates with 7mm coarse-grained screws. The Bluetooth speaker is completed. Note: The foot of the box is facing down.



STEP 15

● How to use the Bluetooth speaker: adjust to mode to supply power to the USB, connect the USB to the device with the corresponding interface (charger, power bank, computer, etc.), adjust to mode to power the battery, install the battery on the battery box, and turn on the Bluetooth. Find the Lucky Bluetooth connection, and the Bluetooth speaker will automatically prompt when the connection is completed.

Having trouble with production? See if the following problems have occurred

1. Why can't the Bluetooth speaker be turned on after installation?
 1. Check whether the wires are connected correctly, please refer to the STEP2 circuit wiring reference diagram.
 2. Check whether the wire connection is loose, and it is recommended to reconnect the wire.
2. The Bluetooth speaker can be turned on after installation, why can't it connect to Bluetooth?
 1. Check whether the Bluetooth of the mobile phone is turned on. If the Bluetooth of the mobile phone is not turned on, the Bluetooth speaker will not be connected.
3. Why is it disconnected after Bluetooth connection?
 1. Check whether the battery is low, it is recommended to replace the battery.
 2. The device's power failure or insufficient power will cause Bluetooth to disconnect.

Scientific Knowledge

Bluetooth technology

Bluetooth is a radio technology that supports short-distance communication between devices (generally within 10m). It can exchange information wirelessly among many devices, including mobile phones, PDAs, wireless headsets, notebook computers, and related peripherals. The use of "Bluetooth" technology can effectively simplify the communication between mobile communication terminal devices, and also successfully simplify the communication between the device and the internet, so that data transmission becomes faster and more efficient, and broadens the way for wireless communication.